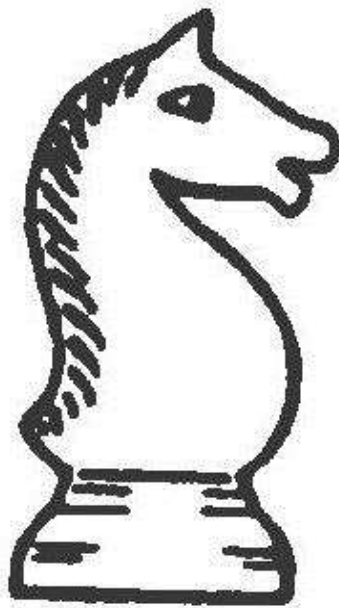


Pinneberger Schachclub von 1932 e.V.



Winterturnier

2010

Pinneberger Winterturnier 2010

(1) Lüttig,Hendrik (1453) – Tantsura,Leonid [A25]
Win 2010-A (1.1), 10.11.2010

1.c4 e5 2.Sc3 Sc6 3.e4 Lc5 4.Sf3 Sf6 5.h3 a6 6.d3 h6 7.Le2 d6 8.a3 a5
9.Ld2 0-0 10.Dc1 Kh7 11.0-0 Sd4 12.Sxd4 Lxd4 13.Sd1 Ld7 14.Le3 c5
15.Lxd4 cxd4 16.f4 Tc8 17.a4 b6 18.Sf2 Tb8 19.f5 Tg8 20.Sg4 De8
21.Dxh6+ gxh6 22.Sxf6+ Kg7 23.Sxe8+ Tbx8 24.Lh5 Kf6 25.h4 Tg3
26.Tf3 Teg8 27.Txg3 Txg3 28.Lf3 Tg8 29.b3 Ke7 30.Kh2 f6 31.Tg1
Le8 32.Tb1 Kd8 33.Ld1 Kc7 34.Lf3 [(=)] $\frac{1}{2}$ - $\frac{1}{2}$

(2) Eckert,Alexander – Mungard,Jens-Uwe (1518) [C20]
Win 2010-A (1.2), 10.11.2010

1.e4 e5 2.Se2 Sf6 3.d4 exd4 4.Sxd4 d6 5.Sd2 c5 6.Lb5+ Ld7 7.Lxd7+
Dxd7 8.S4b3 Sc6 9.0-0 Le7 10.f4 c4 11.Sxc4 Sxe4 12.Df3 Sf6 13.Sca5
Tc8 14.Ld2 Sxa5 15.Lxa5 Txc2 16.Lc3 d5 17.Dd3 Txc3 18.Dxc3 0-0
19.Tad1 b5 20.f5 b4 21.Dd4 Tc8 22.Tc1 Txc1 23.Sxc1 Db5 24.Dxa7
Lc5+ 25.Dxc5 Dxc5+ 26.Kh1 Se4 27.Sd3 Dd4 28.Tf3 Sc5 29.Sxc5
Dd1+ 0-1

(3) Metzner,Arne (1517) – Sagitow,Kamil (1468) [C41]
Win 2010-A (1.3), 10.11.2010

1.e4 e5 2.Sf3 d6 3.h3 Le6 4.d4 exd4 5.Sxd4 Dd7 6.Sc3 c6 7.Ld3 Se7
8.Sce2 Sg6 9.f4 c5 10.Sxe6 fxe6 11.0-0 Se7 12.Sg3 Sbc6 13.c3 Sc8
14.a3 Sb6 15.b4 c4 16.Lc2 0-0-0 17.a4 Dc7 18.a5 Sd7 19.Le3 Kb8
20.De2 Se7 21.Df2 Sc8 22.b5 Sc5 23.Tfb1 De7 24.Se2 Df7 25.Td1 Le7
26.Td2 e5 27.Tad1 g5 28.f5 h5 29.Td5 Thg8 30.Lxc5 dxc5 31.Txd8
Lxd8 32.Dxc5 Lxa5 33.Dxe5+ Lc7 34.Dd5 Lb6+ 35.Kf1 Dxd5 36.Txd5
Se7 37.Td7 Lc5 38.e5 Tf8 39.g4 a6 40.Le4 Kc8 41.Txb7 axb5 42.Txb5
Le3 43.Sd4 Lxd4 44.cxd4 hxg4 45.hxg4 Th8 46.Tc5+ Kd7 47.Kg2 Th4
48.Kg3 Sg8 49.Txc4 Sh6 50.Lf3 Sg8 51.Tc2 Sh6 52.Td2 Sg8 53.Th2
Txh2 54.Kxh2 1-0

(4) Kaland,Joachim (1569) – Borchard,Andreas [B21]
Win 2010-A (1.4), 10.11.2010

1.e4 c5 2.f4 d6 3.Sf3 Sc6 4.Lb5 Ld7 5.Sc3 e6 6.0-0 a6 7.Lxc6 Lxc6
8.d3 Le7 9.b3 Sf6 10.Lb2 0-0 11.De1 d5 12.Td1 d4 13.Se2 Sg4 14.Lc1
Dc7 15.h3 Sh6 16.Sg3 f6 17.f5 exf5 18.Lxh6 gxh6 19.Sxf5 Ld6
20.Sxh6+ Kh8 21.Sf5 Tg8 22.Dh4 Taf8 23.Sxd6 Dxd6 24.Sh2 f5 25.Tf2
Dg6 26.Tdf1 fxe4 27.Txf8 Dxg2# 0-1

Pinneberger Winterturnier 2010

(5) Tantsura,Leonid – Borchard,Andreas [B20]

Win 2010-A (2.1), 10.11.2010

1.e4 c5 2.Lc4 Sc6 3.d3 e6 4.Sc3 Sf6 5.Lg5 Le7 6.Sf3 d6 7.a3 a6 8.0-0
0-0 9.Dd2 b5 10.La2 Db6 11.Tfd1 Sd4 12.Sxd4 cxd4 13.Se2 e5 14.f4
Lg4 15.Tf1 Sxe4 16.dxe4 Lxg5 17.fxg5 d3+ 18.Tf2 dxe2 19.h3 Le6
20.Dxe2 Lxa2 21.Txa2 f5 22.gxf6 Txf6 23.Ta1 Taf8 24.Taf1 T8f7 25.g3
Dd4 26.c3 Txf2 27.Txf2 Txf2 28.Dxf2 Dxe4 29.Db6 Db1+ 30.Kg2
Dxb2+ 31.Kf1 Db1+ 32.Kg2 De4+ 33.Kg1 Df3 34.Dd8+ Df8 35.Dd7 h6
36.Dc6 Dd8 37.Dxa6 Dd7 38.Da8+ Kh7 39.De4+ g6 40.Kg2 Kg7
41.Dd5 Kf6 42.g4 Kg7 43.Kg3 Dc7 44.Kg2 Dc5 45.De6 Dc6+ 46.Kh2
Dc7 47.Kg2 Dc6+ 48.Kh2 Dc7

1/2-1/2

(6) Sagitow,Kamil (1468) – Kaland,Joachim (1569) [C00]

Win 2010-A (2.2), 10.11.2010

1.e4 e6 2.d4 d5 3.Ld3 dxe4 4.Lxe4 Sf6 5.Lf3 c6 6.Se2 Ld6 7.Lg5
Sbd7 8.Sbc3 h6 9.Lh4 Dc7 10.Lg3 0-0 11.0-0 Sb6 12.Se4 Sxe4
13.Lxe4 e5 14.dxe5 Lxe5 15.Lf3 De7 16.c3 Lf5 17.Lxe5 Dxe5 18.Sd4
Tad8 19.Te1 Dc7 20.Dc1 Lh7 21.b3 Sd7 22.Db2 Se5 23.Le4 Lxe4
24.Txe4 Tfe8 25.Dc2 Dd7 26.Se2 Sg4 27.Sg3 Sf6 28.Txe8+ Dxe8
29.c4 De5 30.Td1 Te8 31.Dd2 h5 32.Sf1 h4 33.Se3 Se4 34.Dd4 Dg5
35.Sf1 h3 36.Sg3 c5 37.Dd7 Te7 38.Dxh3 Te8 39.Sxe4 Txe4 40.Dc8+
Kh7 41.Dxb7 Dd2 42.Dxe4+

1-0

(7) Mungard,Jens-Uwe (1518) – Metzner,Arne (1517) [C44]

Win 2010-A (2.3), 10.11.2010

1.e4 e5 2.Sf3 Sf6 3.d3 Sc6 4.Sc3 d5 5.exd5 Sxd5 6.Sxd5 Dxd5 7.h3
Lc5 8.c4 Dd6 9.a3 a6 10.b4 La7 11.c5 Dd5 12.Le3 Sd4 13.Le2 0-0
14.0-0 h6 15.Sxd4 exd4 16.Lf3 De5 17.Lc1 c6 18.Te1 Dc7 19.Te4 Lb8
20.Lf4 Dd8 21.Lxb8 Txb8 22.Dd2 Lf5 23.Tf4 Dd7 24.Lg4 Lxg4 25.Txg4
f5 26.Tg6 Kh7 27.Td6 Dc7 28.Txd4 Tbe8 29.Td6 Td8 30.Df4 Txd6
31.Dxd6 Dxd6 32.cxd6 Td8 33.Kf1 Kg6 34.Te1 Txd6 35.Te3 Kf7
36.Ke2 Te6 37.f4 Ke7 38.Te5 Kd7 39.d4 g6 40.Kd3 b5 41.d5 cxd5
42.Txd5+ Td6 43.Kd4 Kc6 44.Txd6+ Kxd6 45.h4 Ke6 46.Kc5 g5
47.fxg5 hxg5 48.hxg5 f4 49.g6 Kf6 50.g7 Kxg7 51.Kb6 Kg6 52.Kxa6
Kg5 53.Kxb5 Kg4 54.a4 Kg3 55.a5 Kxg2 56.a6 f3 57.a7 f2 58.a8D+
Kg1 59.Da7 Kg2 60.Dxf2+ Kxf2

1-0

Pinneberger Winterturnier 2010

(8) Lüttig,Hendrik (1453) – Eckert,Alexander [A21]

Win 2010-A (2.4), 10.11.2010

1.c4 e5 2.Sc3 c6 3.e4 Lc5 4.Sf3 d6 5.h3 f5 6.d3 h6 7.Le2 g5 8.Sa4 Lb4+ 9.Ld2 Lxd2+ 10.Sxd2 Le6 11.exf5 Lxf5 12.Lh5+ Kf8 13.Df3 Se7 14.g4 Dd7 15.gxf5 Dxf5 16.Se4 Dxf3 17.Lxf3 d5 18.cxd5 Sxd5 19.a3 Sd7 20.Lg4 Ke7 21.Sac5 Sxc5 22.Sxc5 b6 23.Sb3 Taf8 24.Le2 a5 25.Th2 Tf4 26.Sd2 h5 27.0-0-0 h4 28.Se4 Tf5 29.Lg4 Tff8 30.Sxg5 Sf6 31.Lf3 Sh7 32.Sxh7 Txf3 33.Sg5 Tf4 34.Te1 Tf5 35.Se4 Td8 36.Kc2 Td5 37.Tg2 Tf3 38.Te3 Txe3 39.fxe3 b5 40.Tg4 c5 41.Sc3 Td8 42.Sxb5 Tf8 43.Txh4 Tf2+ 44.Kb3 Kf6 45.Sc3 Kg5 46.Tc4 Tf3 47.Se4+ Kg6 48.Sxc5 Txe3 49.Te4 Txe4 50.Sxe4 Kf5 51.Ka4 Kf4 52.b4 Ke3 53.h4 Kxd3 54.Sg3 Ke3 55.h5 Kf4 56.h6 1-0

(9) Eckert,Alexander – Tantsura,Leonid [C20]

Win 2010-A (3.1), 10.11.2010

1.e4 e5 2.Se2 Sc6 3.c3 d5 4.f3 dxe4 5.fxe4 Lg4 6.h3 Lh5 7.Da4 Lxe2 8.Lxe2 Dh4+ 9.Kd1 Ld6 10.d3 Sf6 11.Sd2 0-0-0 12.Sf3 Dg3 13.Tg1 h6 14.Ld2 Lc5 15.Le1 Lf2 16.Lxf2 Dxf2 17.Dc2 Sxe4 18.d4 Sg3 19.Ld3 Dxc2+ 20.Kxc2 e4 21.Lc4 f5 22.Le6+ Kb8 23.Se5 Sxe5 24.dxe5 The8 25.Tad1 Txd1 26.Txd1 c6 27.Lf7 Te7 28.Td8+ Kc7 29.Ta8 Txf7 30.e6 0-1

(10) Metzner,Arne (1517) – Lüttig,Hendrik (1453) [C65]

Win 2010-A (3.2), 10.11.2010

1.e4 e5 2.Sf3 Sc6 3.Lb5 Sf6 4.d3 d6 5.h3 h6 6.a3 Le7 7.0-0 Ld7 8.De2 a6 9.Lc4 0-0 10.b4 b5 11.La2 Dc8 12.Kh2 Le6 13.Td1 d5 14.exd5 Lxd5 15.Lxd5 Sxd5 16.c4 Sb6 17.Ta2 Te8 18.De4 De6 19.Tc2 f5 20.De2 Dg6 21.c5 Sd5 22.Kg1 Lf6 23.Te1 Sd4 24.Sxd4 exd4 25.Dd1 Txe1+ 26.Dxe1 Te8 27.Te2 Txe2 28.Dxe2 Lg5 29.Lxg5 hxg5 30.De5 Sf4 31.Dxc7 De8 32.Sd2 De1+ 33.Sf1 Se2+ 34.Kh2 Dxf2 0-1

(11) Kaland,Joachim (1569) – Mungard,Jens-Uwe (1518)

[C62] Win 2010-A (3.3), 10.11.2010

1.e4 e5 2.Sf3 Sc6 3.Lb5 d6 4.0-0 Ld7 5.Te1 Sf6 6.c3 a6 7.La4 Le7 8.d4 b5 9.Lc2 exd4 10.cxd4 0-0 11.h3 Dc8 12.Lf4 Sb4 13.Sc3 Sxc2 14.Dxc2 c6 15.Dd3 Te8 16.Tad1 h6 17.e5 Lf5 18.De3 dxe5 19.Sxe5 Sh7 20.Df3 Sg5 21.Lxg5 Lxg5 22.g4 Lc2 23.Dxf7+ Kh7 24.Ta1 Tf8 25.Dd7 Lh4 26.Te2 Dxd7 27.Sxd7 Tfd8 28.Txc2 Txd7 29.Se2 Td6

Pinneberger Winterturnier 2010

30.Tac1 Tc8 31.f4 Lf6 32.Kg2 Te8 33.Kf3 g5 34.Txc6 Ted8 35.Txd6
Txd6 36.Tc7+ Kg8 37.fxc5 Lxc5 38.Tc2 Te6 39.Tc3 Kf7 40.Td3 Ke7
41.b3 Kd7 42.Sg3 Kc7 43.d5 Tf6+ 44.Sf5 Tf8 45.d6+ Kd7 46.Ke4 Lc1
47.Tc3 Te8+ 48.Kd5 Lf4 49.Tc7+ Kd8 50.Kc6 Te6 51.Td7+ Kc8
52.Se7+ Kb8 53.Td8+ Ka7 54.Sc8+ Kb8 55.Sb6+ 1-0

(12) Borchard,Andreas – Sagitow,Kamil (1468) [B00]

Win 2010-A (3.4), 10.11.2010

1.e4 Sc6 2.Sc3 e6 3.f4 d6 4.Sf3 Le7 5.Lb5 Ld7 6.0-0 a6 7.La4 Sa5
8.Lxd7+ Dxd7 9.d3 Sc6 10.d4 Sa7 11.De1 0-0-0 12.Df2 d5 13.Se5 De8
14.f5 Lf6 15.fxe6 fxe6 16.Lf4 Sc6 17.exd5 exd5 18.Tae1 Sge7 19.Sa4
Sg6 20.Sxc6 Dxc6 21.Sc5 The8 22.c3 Txe1 23.Dxe1 Te8 24.Dd1 Sxf4
25.Txf4 Kb8 26.Dg4 Te7 27.Df5 h6 28.Sd3 Dc4 29.a3 Db5 30.Tf2 Db3
31.Df3 Db5 32.Te2 Txe2 33.Dxe2 $\frac{1}{2}$ - $\frac{1}{2}$

(13) Tantsura,Leonid – Sagitow,Kamil (1468) [B00]

Win 2010-A (4.1), 10.11.2010

1.e4 Sc6 2.d4 d5 3.e5 e6 4.Sf3 Le7 5.Lb5 Ld7 6.a3 Sa5 7.De2 Sc6
8.0-0 Sb8 9.b4 Lc6 10.Lb2 Dd7 11.Ld3 b6 12.b5 Lb7 13.a4 Lb4 14.c3
La5 15.Sbd2 c6 16.Sb3 Se7 17.Sxa5 bxa5 18.La3 0-0 19.Lc5 Tc8
20.Sg5 Sg6 21.g3 De8 22.h4 h6 23.Sh3 Sd7 24.Ld6 cxb5 25.h5 Sgf8
26.axb5 Dd8 27.Tfc1 Sh7 28.f4 Db6 29.f5 Txc3 30.De3 Tac8 31.Txc3
Txc3 32.fxe6 Txd3 33.exf7+ Kxf7 34.Dxd3 Kg8 35.Tf1 a6 36.Tb1 axb5
37.Txb5 Da6 38.Db1 Lc6 39.Tb8+ Sxb8 40.Dxb8+ Kf7 41.Dc7+ Kg8
42.Dd8+ Kf7 43.e6+ Kxe6 44.De7+ Kf5 45.De5+ 1-0

(14) Mungard,Jens-Uwe (1518) – Borchard,Andreas [B30]

Win 2010-A (4.2), 10.11.2010

1.e4 c5 2.Sf3 Sc6 3.c3 d6 4.d4 Lg4 5.Le3 Db6 6.Dd2 Sf6 7.d5 Lxf3
8.gxf3 Se5 9.De2 Sxf3+ 10.Kd1 Se5 11.Db5+ Dxb5 12.Lxb5+ Kd8
13.Sd2 a6 14.Le2 g6 15.f3 Lg7 16.b4 cxb4 17.cxb4 Sfd7 18.Tc1 Tc8
19.Sb3 Txc1+ 20.Kxc1 Sb8 21.Kd2 Sed7 22.Tc1 b6 23.f4 h5 24.Tc2 e6
25.Ld4 e5 26.fxe5 Lxe5 27.Ke3 Te8 28.Sd2 Lxh2 29.Sc4 Lg1+ 30.Kd3
Lxd4 31.Kxd4 Ke7 32.Sd2 Kd8 33.Sc4 Ke7 34.Sd2 b5 35.Sb3 Kd8
36.Sa5 Se5 37.Sc6+ Sexc6+ 38.dxc6 Kc7 39.Lf3 Te5 40.Kd3 Sxc6
41.Lg2 g5 42.a3 Kd7 43.Tf2 Ke7 44.Tc2 Kd7 45.Tf2 Sd8 46.Tf6 g4
47.Ke3 Ke7 48.Th6 Se6 49.Th8 d5 50.Ta8 Sc7 51.Ta7 Kd6 52.Kd3
dxe4+ 53.Lxe4 f5 54.Lh1 f4 55.Tb7 f3 56.Tb6+ Ke7 57.Th6 Se6
58.Th7+ Kf6 59.Kd2 Te2+ 60.Kd1 Ta2 61.Txh5 f2 62.Lg2 Sf4 0-1

Pinneberger Winterturnier 2010

(15) Lüttig,Hendrik (1453) – Kaland,Joachim (1569) [C02]

Win 2010-A (4.3), 10.11.2010

1.e4 e6 2.d4 d5 3.e5 c5 4.c3 Db6 5.Sd2 Ld7 6.a4 cxd4 7.a5 Dc7
8.cxd4 Lb4 9.Ld3 Se7 10.Sgf3 Lxa5 11.Dc2 Sbc6 12.0-0 Lxd2
13.Lxd2 Db6 14.Dc5 Dxc5 15.dxc5 a6 16.b4 Sa7 17.Sd4 Sec6
18.Sxc6 Lxc6 19.f4 Lb5 20.Lxb5+ Sxb5 21.Tfd1 0-0 22.Le1 Tac8
23.Lh4 h6 24.Le7 Tfe8 25.Ld6 Sc3 26.Tf1 Se4 27.g4 Sxd6 28.exd6
Tc6 29.Tfc1 Td8 30.Kf2 g6 31.Ke3 Kg7 32.Kd4 f5 33.gxf5 ½-½

(16) Eckert,Alexander – Metzner,Arne (1517) [C26]

Win 2010-A (4.4), 10.11.2010

1.e4 e5 2.d3 Sf6 3.Se2 d5 4.f3 dxe4 5.dxe4 Dxd1+ 6.Kxd1 Sc6
7.Sbc3 Le6 8.a3 0-0-0+ 9.Ke1 h6 10.Le3 a6 11.Td1 Txd1+ 12.Kxd1
Sd7 13.f4 f5 14.g3 Sa5 15.fxe5 Sxe5 16.Sd4 Lc4 17.Sxf5 Lxf1 18.Txf1
Sg4 19.Lg1 g6 20.h3 gxf5 21.hxg4 fxc4 22.Ld4 Tg8 23.Sd5 Sc6 24.c3
Lg7 25.Sf6 Td8 26.e5 Sxe5 27.Tf5 Sf3 28.Ke2 Sxd4+ 29.cxd4 Td6
30.Sxg4 Lxd4 31.Tf8+ Kd7 32.Tf7+ Kc6 33.Th7 Lxb2 34.Sxh6 Lxa3
35.g4 Tg6 36.Kf3 Td6 37.Sf7 Tf6+ 38.Ke4 b5 39.Th6 Txh6 40.Sxh6
Lb2 41.g5 b4 42.g6 b3 43.Sf7 Lg7 44.Se5+ Kc5 45.Sf3 a5 46.Kd3 Kb4
47.Sd4 c5 48.Se6 Lf6 49.g7 Lxg7 50.Sxg7 a4 51.Sf5 a3 52.Se3 a2
53.Sc2+ bxc2 54.Kxc2 a1D 0-1

(17) Metzner,Arne (1517) – Tantsura,Leonid [B01]

Win 2010-A (5.1), 10.11.2010

1.e4 d5 2.exd5 Sf6 3.Lc4 Sxd5 4.Df3 e6 5.a3 Lc5 6.b4 Ld4 7.c3 Lf6
8.d4 a6 9.Dg3 0-0 10.Sf3 Sc6 11.0-0 Sce7 12.Se5 Sg6 13.Sxg6 fxc6
14.Dd3 c6 15.f4 b5 16.Lb3 Dd6 17.Ta2 Te8 18.Le3 Ld7 19.Sd2 a5
20.Se4 Dc7 21.Te2 axb4 22.axb4 Ta3 23.Sc5 Tea8 24.Lc1 Ta1
25.Tee1 Kf7 26.g3 Te8 27.Se4 Kg8 28.Df3 Tb1 29.Sc5 Ta1 30.Lb2
Txe1 31.Txe1 Kf7 32.h4 Dd6 33.Se4 Dc7 34.h5 Dd8 35.Sd6+ Kg8
36.hxg6 Te7 37.gxh7+ Kh8 38.g4 Lh4 39.Tf1 Dc7 40.Se4 Tf7 41.Lc1
Le7 42.f5 exf5 43.gxf5 Txf5 44.Dg2 Txf1+ 45.Dxf1 Le6 46.Lxd5 Lxd5
47.Lf4 Dd7 48.Sg3 Dg4 49.Df2 Df3 50.Dxf3 Lxf3 51.Le5 Kxh7 52.Sf5
Lf8 53.Kf2 Ld5 54.Se3 g5 55.Sxd5 cxd5 56.Kg3 Kg6 57.Kg4 Le7
58.Lh8 Kf7 59.Le5 Ke6 60.Kh5 Kf5 61.Kh6 g4 0-1

(18) Kaland,Joachim (1569) – Eckert,Alexander [B02]

Win 2010-A (5.2), 10.11.2010

1.e4 Sf6 2.Sc3 e6 3.d4 b6 4.Sf3 La6 5.Ld3 Lb4 6.0-0 0-0 7.e5 Sd5
8.Lxh7+ Kxh7 9.Sg5+ Kg6 10.Sxd5 exd5 11.Dg4 De7 12.Se6+ Kh7 1-0

Pinneberger Winterturnier 2010

(19) Borchard,Andreas – Lüttig,Hendrik (1453) [C00]

Win 2010-A (5.3), 10.11.2010

1.e4 e6 2.f4 d5 3.e5 Sc6 4.d4 Ld7 5.Sf3 Lb4+ 6.c3 La5 7.Ld3 f5 8.0-0
De7 9.b4 Lb6 10.Sg5 0-0-0 11.La3 De8 12.Le2 g6 13.Sf3 h5 14.Sg5
Sh6 15.Dd3 Sf7 16.Sd2 Sxg5 17.fxg5 Sxe5 18.Dg3 Sf7 19.Sf3 Lb5
20.Lxb5 Dxb5 21.Tfe1 Dd7 22.Lc1 Sd6 23.Se5 Dg7 24.Lf4 Se4 1/2-1/2

(20) Sagitow,Kamil (1468) – Mungard,Jens-Uwe (1518)

[C55] Win 2010-A (5.4), 10.11.2010

1.e4 e5 2.Sf3 Sc6 3.Lc4 Sf6 4.d3 h6 5.Le3 d6 6.Sc3 Sa5 7.Sd2 Sxc4
8.Sxc4 Sg4 9.Ld2 f5 10.f3 Sf6 11.g3 fxe4 12.dxe4 Le7 13.De2 0-0
14.Se3 Le6 15.Dg2 Tf7 16.f4 exf4 17.gxf4 c6 18.f5 Ld7 19.0-0-0 d5
20.exd5 cxd5 21.Se2 Lc5 22.Thf1 Se4 23.Sg4 Kh7 24.Sg3 Sxd2
25.Dxd2 Lc6 26.Dc3 Dg5+ 27.Kb1 Le7 28.Se5 Lf6 29.Sxf7 Lxc3
30.Sxg5+ 1-0

(21) Tantsura,Leonid – Mungard,Jens-Uwe (1518) [C62]

Win 2010-A (6.1), 10.11.2010

1.Sf3 Sc6 2.e4 e5 3.Lb5 d6 4.h3 Sf6 5.d3 h6 6.Le3 a6 7.La4 Le6 8.c4
b5 9.cxb5 axb5 10.Lxb5 Ld7 11.a3 Db8 12.Sc3 Le7 13.Dd2 Sa5
14.Lxd7+ Kxd7 15.Dc2 Db3 16.Dxb3 Sxb3 17.Tb1 Thb8 18.0-0 Sh7
19.Sd2 Sg5 20.h4 Se6 21.g3 Sxd2 22.Lxd2 Sc5 23.f4 Sxd3 24.fxe5
Sxe5 25.Sd5 f6 26.Lc3 Ld8 27.Tfd1 c6 28.Sb4 Lb6+ 29.Kg2 Sc4
30.Kf3 Tf8 31.Sd3 Kc7 32.g4 Tae8 33.h5 d5 34.Te1 dxe4+ 35.Txe4
Txe4 36.Kxe4 Sd6+ 37.Kf4 Te8 38.Te1 Txe1 39.Sxe1 Kd7 40.Sf3 c5
41.b3 Ke6 42.a4 Lc7 43.Ke3 Kd5 44.Sd2 Sb7 45.Kd3 Sa5 46.b4 cxb4
47.Lxb4 Sc6 48.Lf8 Se5+ 49.Ke2 Sxg4 50.Lxg7 f5 51.Sf3 Ld8 52.Lc3
Sf6 53.Sd4 Ke4 54.Se6 Lb6 55.Lxf6 f4 56.Ld8 f3+ 57.Kf1 La7 58.a5
Kf5 59.Lb6 Lb8 60.Sd4+ Kg4 61.a6 Kxh5 62.Sc6 1-0

(22) Lüttig,Hendrik (1453) – Sagitow,Kamil (1468) [B00]

Win 2010-A (6.2), 10.11.2010

1.e4 Sc6 2.Sf3 d6 3.Sc3 Lg4 4.Le2 Sf6 5.d3 e5 6.h3 Le6 7.0-0 Sd7
8.Sg5 De7 9.Sxe6 fxe6 10.Le3 0-0-0 11.Dc1 h6 12.a3 Kb8 13.b4 Sd4
14.Ld1 Tc8 15.Sa2 d5 16.c3 Sc6 17.La4 Sd8 18.c4 d4 19.Ld2 c5
20.Lxd7 Dxd7 21.b5 g5 22.g4 Le7 23.a4 De8 24.Kg2 Dg6 25.Th1 Sf7
26.Dd1 h5 27.f3 hxg4 28.fxg4 Sd6 29.De2 Tcf8 30.Taf1 Lf6 31.Le1
Sc8 32.a5 Dg7 33.Sc1 Se7 34.Sb3 Tc8 35.Db2 Sg6 36.Lg3 De7
37.Sd2 Sf4+ 38.Lxf4 exf4 39.Sf3 [(=)] 1/2-1/2

(23) Eckert,Alexander – Borchard,Andreas [B30]

Win 2010-A (6.3), 10.11.2010

1.e4 c5 2.Sf3 Sc6 3.d3 d6 4.Le3 Sf6 5.Le2 e6 6.c3 Le7 7.Sbd2 d5
8.e5 Sd7 9.d4 cxd4 10.cxd4 0-0 11.Dc2 Sb4 12.Dc3 Sc6 13.h4 f6
14.g4 fxe5 15.dxe5 Lb4 16.Db3 Lxd2+ 17.Lxd2 Sdxe5 18.Sxe5 Sxe5
19.De3 Sg6 20.g5 Sf4 21.Lf3 e5 22.Db3 Le6 23.Dxb7 Sd3+ 24.Ke2 e4
25.Dc6 De7 26.Lxe4 dxe4 27.Le3 Lg4+ 28.Kd2 Tac8 29.Dd5+ Kh8
30.Thf1 Db4# 0-1

(24) Metzner,Arne (1517) – Kaland,Joachim (1569) [C01]

Win 2010-A (6.4), 10.11.2010

1.e4 e6 2.Sf3 d5 3.exd5 exd5 4.d4 Sf6 5.a3 Ld6 6.Sc3 0-0 7.Le2 Lf5
8.Lg5 c6 9.Sh4 Le6 10.Dd2 Sbd7 11.Sf3 Db6 12.b4 Lg4 13.0-0 Dc7
14.h3 Lxf3 15.Lxf3 Tfe8 16.Tfe1 Kh8 17.Txe8+ Txe8 18.Te1 Txe1+
19.Dxe1 h6 20.Lc1 Sf8 21.De3 Sg6 22.Se2 Sh4 23.g3 Sxf3+ 24.Dxf3
Dd7 25.Kg2 De6 26.Le3 Se4 27.Sf4 Lxf4 28.Dxf4 Sc3 29.Df3 Dg6
30.Lxh6 Dxc2 31.Dxf7 De4+ 32.Kh2 gxh6 33.Df8+ Kh7 ½-½

(25) Kaland,Joachim (1569) – Tantsura,Leonid [A00]

Win 2010-A (7.1), 10.11.2010 [kampflos] 0-1

(26) Borchard,Andreas – Metzner,Arne (1517) [C29]

Win 2010-A (7.2), 10.11.2010

1.e4 e5 2.Sc3 Sf6 3.f4 d6 4.Lc4 c6 5.d3 b5 6.Lb3 Le7 7.Sf3 Dc7 8.f5
Lb7 9.Sg5 Tf8 10.Le3 h6 11.Sh3 Sa6 12.Df3 0-0-0 13.0-0 d5 14.exd5
cxd5 15.Sxb5 Dd7 16.La4 Lc6 17.Sxa7+ 1-0

(27) Sagitow,Kamil (1468) – Eckert,Alexander [B00]

Win 2010-A (7.3), 10.11.2010

1.e4 f6 2.Lc4 d6 3.d4 a6 4.Sf3 b5 5.Ld3 Lg4 6.0-0 Sd7 7.Sbd2 c5
8.dxc5 Sxc5 9.Le2 e5 10.Sh4 Lxe2 11.Dxe2 Se7 12.Td1 Dc7 13.c3 0-
0-0 14.Sf1 Se6 15.Le3 g5 16.Sf3 Lh6 17.a4 Dc4 18.Dc2 f5 19.b3 Dxe4
20.Da2 b4 21.cxb4 Dxb4 22.Ld2 Db7 23.b4 Dd5 24.Db2 Dc6 25.Db3
Dd5 26.Tac1+ Kd7 27.Da3 e4 28.Sxg5 Sxg5 29.Lxg5 Lxg5 30.Txd5
Lxc1 31.Txd6+ Kxd6 32.Dxc1 Tb8 33.Dc5+ Kd7 34.g3 Thc8 35.Dd4+
Ke6 36.Se3 Tc1+ 37.Kg2 h5 38.Dg7
0-1

Pinneberger Winterturnier 2010

(28) Mungard,Jens-Uwe (1518) – Lüttig,Hendrik (1453)

[B12] Win 2010-A (7.4), 10.11.2010

1.e4 c6 2.d4 d5 3.e5 Lf5 4.Le3 Sd7 5.f4 Db6 6.b3 e6 7.Sf3 Sh6 8.h3
Le4 9.c3 Sf5 10.Lf2 c5 11.Sbd2 cxd4 12.Sxe4 dxe4 13.Sxd4 Sxd4
14.Lxd4 Lc5 15.a4 Lxd4 16.Dxd4 0-0 17.b4 Dxd4 18.cxd4 Tac8 19.a5
Tc3 20.Lb5 Sb8 21.0-0 Tfc8 22.Tab1 a6 23.La4 Sc6 24.Tfd1 Se7
25.Kf2 h5 26.Lb3 Sd5 27.f5 Se3 28.Te1 Sxf5 29.Txe4 Td3 30.d5 exd5
31.Te2 Se7 32.Tbb2 Kf8 33.La4 Tc4 34.Tec2 Sc6 35.Txc4 dxc4 36.b5
Sxe5 37.bxa6 bxa6 38.Tb8+ Ke7 39.Tb7+ Kd8 40.Tb6 Ta3 41.Td6+
Kc7 42.Td5 f6 43.Ld1 g6 44.Tc5+ Kd6 45.Tc8 Txa5 46.Le2 Tc5 47.Tf8
Ke7 48.Ta8 a5 49.Ta7+ Ke6 50.Ta6+ Kf5 51.Ld1 Sc6 52.g3 Sb4
53.Td6 c3 54.g4+ hxg4 55.Lxg4+ Kg5 0-1

(29) Sachse,Theo (1235) – Weiler,Udo [C46]

Win 2010-B (1.1), 10.11.2010

1.e4 e5 2.Sf3 Sc6 3.Sc3 g6 4.Lc4 Sge7 5.d3 d6 6.Lg5 Ld7 7.a3 Dc8
8.h3 Le6 9.Lf6 Tg8 10.Lb5 a6 11.Lxe7 Lxe7 12.Lxc6+ bxc6 13.0-0 h5
14.d4 g5 15.dxe5 g4 16.hxg4 Lxg4 17.exd6 cxd6 18.Dd3 Lxf3 19.Dxf3
Dg4 20.Dxg4 Txg4 21.Tae1 Lf6 22.Te3 Kd7 23.b3 Lxc3 24.Txc3 Txe4
25.Te3 d5 26.Tfe1 f5 27.f3 Txe3 28.Txe3 Kd6 29.f4 Kc5 30.c3 a5
31.Kh2 a4 32.b4+ Kc4 33.Kh3 Kb3 34.Te6 Kxa3 35.Txc6 Kb2 36.b5 a3
37.Ta6 Txa6 38.bxa6 a2 39.a7 a1D 40.a8D Dxa8 41.g3 Kxc3 42.Kh4
De8 0-1

(30) Schäfer,Hans (1215) – Dammann,Rudolf (1294) [A00]

Win 2010-B (1.1), 10.11.2010

1.e3 c5 2.d4 e5 3.c4 d5 4.Sc3 Le6 5.cxd5 Lxd5 6.b3 Sf6 7.a4 1-0

(31) Dammann,Rudolf (1294) – Sachse,Theo (1235) [C24]

Win 2010-B (1.2), 10.11.2010

1.e4 e5 2.Lc4 Sf6 3.d3 h6 4.Sf3 Sc6 5.c3 a6 6.a4 Lc5 7.Le3 Lxe3
8.fxe3 0-0 9.0-0 Sg4 10.De2 Sf6 11.Sbd2 d5 12.exd5 Sxd5 13.Lxd5
Dxd5 14.e4 Dc5+ 15.Tf2 Le6 16.Sh4 Se7 17.h3 Sg6 18.Sf5 Sf4 19.De3
Dxe3 20.Sxe3 Sxd3 21.Tf3 Tab8 22.Sd5 Sxb2 23.Sxc7 Ld7 24.Ta2
Sxa4 25.Sd5 Sc5 26.Se7+ Kh8 27.Ta5 Tfe8 28.Txf7 b6 29.Ta1 Le6
30.Taf1 Lxf7 31.Txf7 Tb7 32.Sg6+ Kh7 33.Sxe5 Txe5 34.Txb7 Sxb7
35.Kf2 Sc5 36.Ke3 Tg5 37.Kf3 a5 38.h4 Tg6 39.e5 a4 40.Sb1 b5 41.g4
Ta6 42.Sa3 Tb6 43.Kf4 Kg6 44.Sc2 Sd3+ 45.Ke4 Sf2+ 46.Kf3 Sd3
47.Ke4 Sc5+ 48.Kd4 Se6+ 49.Kd5 h5 50.Se3 a3 51.gxh5+ Kxh5
52.Sc2 a2 53.Sa1 Kxh4 54.Ke4 g5 55.Kf3 g4+ 56.Kg2 g3 57.Sb3 Kg4

Pinneberger Winterturnier 2010

58.Sa1 Sf4+ 59.Kf1 Te6 60.Sc2 Txe5 61.Sa1 Te2

0-1

(32) Schleu,Günther (1294) – Schäfer,Hans (1215) [D02]

Win 2010-B (1.2), 10.11.2010

1.d4 e6 2.Sf3 d5 3.Lf4 Ld6 4.Le3 b6 5.Sbd2 c5 6.c3 Sc6 7.Dc2 f5
8.Lg5 Le7 9.Lf4 cxd4 10.cxd4 Lb7 11.e3 Lb4 12.Le2 Lxd2+ 13.Dxd2
Sf6 14.0-0 Se4 15.Dc2 0-0 16.Tac1 Tc8 17.Db1 g5 18.Le5 g4 19.Se1
Sxe5 20.dxe5 Sd2 21.Da1 Sxf1 22.Kxf1 Txc1 23.Dxc1 Da8 24.Sd3 Tc8
25.Dd2 La6 26.f4 gxf3 27.Lxf3 Lxd3+ 28.Dxd3 Tc1+ 29.Kf2 Dc8
30.Ld1 Dc4 31.Dd2 Dh4+ 32.Kg1 Ta1 33.g3 De4 34.Kf2 Db1

1-0

(33) Sachse,Theo (1235) – Schleu,Günther (1294) [B20]

Win 2010-B (1.3), 10.11.2010

1.e4 c5 2.Lc4 e6 3.a3 Le7 4.d3 Sc6 5.Sf3 Sf6 6.h3 a6 7.Sbd2 b5
8.La2 Lb7 9.c4 Dc7 10.Sb3 0-0 11.Le3 d6 12.De2 bxc4 13.dxc4 Sxe4
14.Dc2 Sf6 15.Sbd2 Se5 16.Lb1 Sxf3+ 17.Sxf3 Le4 18.Dc3 Dc6
19.Lxe4 Dxe4 20.0-0 h6 21.Tae1 Dc6 22.Sd2 d5 23.cxd5 Sxd5 24.Dc2
Sxe3 25.Txe3 Lf6 26.b3 Tad8 27.Se4 Ld4 28.Tf3 Td5 29.Td3 Tfd8
30.Tfd1 Te5 31.Txd4 Ted5 32.Txd5 Txd5 33.Txd5 Dxd5 34.Sxc5 Dc6
35.Dc4 f6 36.a4 Kf7 37.b4 Ke7 38.b5 axb5 39.axb5 Dd5 40.Dxd5 exd5
41.b6 Kd8 42.b7 Kc7 43.Kf1 d4 44.Ke2 g5 45.Kd3 f5 46.Kxd4 f4
47.Ke4 h5 48.Kf3 Kb8 49.g3 fxg3 50.fxg3 Kc7 51.h4 gxh4 52.gxh4
Kb8 53.Kf4 Kc7 54.Kg5 Kb8 55.Kxh5 Kc7 56.Kg6 Kb8 57.h5 Kc7
58.h6 Kb8 59.h7 Ka7 60.h8D

1-0

(34) Weiler,Udo – Dammann,Rudolf (1294) [C55]

Win 2010-B (1.3), 10.11.2010

1.e4 e5 2.Sf3 Sc6 3.Lc4 Sf6 4.0-0 Lc5 5.d3 a6 6.Lb3 h6 7.c3 d5
8.exd5 Sxd5 9.h3 Lf5 10.De2 Df6 11.Lxd5 Td8 12.Lxc6+ bxc6 13.Se1
0-0 14.Le3 Lxe3 15.fxe3 Dg6 16.e4 Lxh3 17.Sa3 f5 18.Tf3 Lg4 19.Sc4
fxe4 20.dxe4 Txf3 21.Sxf3 Lxf3 22.Dxf3 De8 23.Sa5 c5 24.Sb3 c4
25.Sc5 Db5 26.Df2 Tf8 27.De3 Dxb2 28.Tf1 Txf1+ 29.Kxf1 Dxa2
30.Se6 Db1+ 31.Kf2 Dc2+ 32.Kg3 Dd3 33.Df3 Dd6 34.Df5 Dd3+
35.Kg4 Dxc3 36.Df8+ Kh7 37.Dxg7#

1-0

(35) Schleu, Günther (1294) – Weiler, Udo [D02]

Win 2010-B (1.4), 10.11.2010

1.d4 d5 2.Sf3 Sc6 3.Lf4 f6 4.e3 Lg4 5.Sbd2 a6 6.Le2 Lf5 7.h3 g5
8.Lg3 Dd7 9.Sh2 0-0-0 10.a3 e6 11.c4 Ld6 12.Lxd6 Dxd6 13.c5 Dd7
14.Tc1 Sge7 15.0-0 e5 16.dxe5 fxe5 17.b4 Lg6 18.Sg4 Tdf8 19.Sf3 Tf5
20.Sd2 h5 21.Sh2 e4 22.Sb3 Kd8 23.Sd4 Tf6 24.Sxc6+ Sxc6 25.Db3
Lf7 26.Dc3 De7 27.Tfd1 Sa7 28.Sf1 Te8 29.a4 c6 30.b5 axb5 31.axb5
Sxb5 32.Lxb5 cxb5 33.Da5+ Dc7 34.Dxb5 g4 35.hxg4 hxg4 36.Sg3
Tf8 37.Db2 Le6 38.Sxe4 Th6 39.Sg3 Ke7 40.Dd4 Tfh8 41.e4 dxe4
42.Dxe4 Tf6 43.Dd4 Thf8 44.Td2 Dc6 45.Te1 Ta8 46.De5 Ta5 47.Se4
Tg6 48.Dd4 Ta4 49.Dd8+ Kf7 50.Sg5+ Kg7 51.De7+ Kh6 52.Sxe6 g3
53.Df8+ Kh5 54.Te5+ 1-0

(36) Schäfer, Hans (1215) – Sachse, Theo (1235) [D00]

Win 2010-B (1.4), 10.11.2010

1.e3 d5 2.d4 a6 3.c4 dxc4 4.Lxc4 e6 5.Sf3 Ld6 6.0-0 Se7 7.b3 0-0
8.Sc3 b5 9.Ld3 Lb7 10.Le4 Ta7 11.a4 b4 12.Lxb7 bxc3 13.Le4 Lb4
14.La3 a5 15.Lxb4 axb4 16.Se5 f6 17.Sc4 Sbc6 18.Dc2 f5 19.Lxc6
Sxc6 20.f4 Sa5 21.Se5 Dd5 22.Tab1 Sc6 23.Tfd1 Sxe5 24.dxe5 Dc5
25.Kf2 h6 26.Td4 Db6 27.Tbd1 Taa8 28.Tc4 Tfd8 29.Tdd4 Td5
30.Txb4 Txd4 31.Txb6 Td2+ 32.Dxd2 cxd2 33.Ke2 Td8 34.Kd1 cxb6
35.b4 Kf7 36.h4 h5 37.b5 Td3 38.g3 Txe3 39.Kxd2 Tvg3 40.Kc2 Ta3
0-1

(37) Weiler, Udo – Schäfer, Hans (1215) [C02]

Win 2010-B (1.5), 10.11.2010

1.e4 e6 2.d4 d5 3.e5 c5 4.Sf3 Sc6 5.Lb5 Ld7 6.Sc3 a6 7.Lxc6 Lxc6
8.0-0 b5 9.Se2 c4 10.a3 Le7 11.Ld2 f6 12.Sf4 Dd7 13.De1 f5 14.Lb4 0-
0-0 15.La5 Te8 16.Dc3 g5 17.Se2 h5 18.Dd2 g4 19.Se1 Sh6 20.b3
Teg8 21.bxc4 dxc4 22.Dc1 Ld5 23.Ld2 Sf7 24.Tb1 Lg5 25.a4 Lxd2
26.Dxd2 Sg5 27.Sg3 Se4 28.Sxe4 Lxe4 29.axb5 axb5 30.Da5 Lc6
31.c3 Dd5 32.Da6+ Kd7 33.f3 gxf3 34.Sxf3 Ta8 35.Db6 Thg8 36.Tf2
Tgb8 37.Dc5 Dxc5 38.dxc5 Lxf3 39.Txf3 Kc6 40.Tf2 Kxc5 41.Td2 Td8
42.Tdb2

1/2-1/2

Pinneberger Winterturnier 2010

(38) Weiler,Udo – Sachse,Theo [C50]

Win 2010-B (2.1), 28.11.2010

1.e4 e5 2.Sf3 Sc6 3.Lc4 h6 4.0-0 a6 5.d3 d6 6.Sc3 Sf6 7.Le3 Sg4
8.De2 Sxe3 9.Dxe3 Sb4 10.Se1 Le7 11.h3 Lg5 12.De2 Sc6 13.a3 Sd4
14.Dd1 Le6 15.Lxe6 Sxe6 16.Sd5 0-0 17.Sf3 c6 18.Se3 Sf4 19.c4 Se6
20.Te1 b5 21.d4 exd4 22.Sxd4 Lxe3 23.Txe3 Db6 24.Sxe6 fxe6
25.Dxd6 Tae8 26.c5 Db7 27.b4 Kh8 28.Tg3 Dc8 29.De5 Dd7 30.Dh5
Dd4 31.Td1 Dxf2+ 32.Kh2 Td8 33.Dg6 Df6 34.Txd8 Txd8 35.Dxf6 gxf6
36.Tg6 Td3 37.Txf6 Txa3 38.Txe6 Tb3 39.Txh6+ Kg7 40.Txc6 Txb4
41.e5 a5 42.Ta6 Tc4 43.Txa5 Txc5 44.e6 Kf6 45.Ta6 b4 46.Tb6 Tc4
47.g4 Tc2+ 48.Kg1 Tc3 49.Kg2 b3 50.h4 Tc2+ 51.Kf3 b2 52.g5+ Ke7
53.g6 b1D 54.Txb1 Kxe6 55.Tg1 Tc3+ 56.Kg2 Kf6 57.Kh2 Kg7 58.Tg3
Tc8 59.h5 Th8 60.Th3 Kf6 61.Tf3+ Kg5 62.g7 Tg8 63.Tf8 Txg7 64.Th8
Te7 65.Kg3 Te3+ 66.Kh2 Td3 $\frac{1}{2}$ - $\frac{1}{2}$

(39) Sachse,Theo – Dammann,Rudolf [C55]

Win 2010-B (2.2), 22.12.2010

1.e4 e5 2.Sf3 Sc6 3.Lc4 Sf6 4.a3 Sxe4 5.d3 Sd6 6.Le3 h6 7.Ld5 Se7
8.La2 Sg6 9.Sc3 De7 10.Sd5 Dd8 11.h4 c6 12.Sc3 f5 13.h5 Sf4 14.Th2
e4 15.Se5 Dg5 16.g3 exd3 17.Lxf4 dxc2 18.Dxc2 Df6 19.0-0-0 g5
20.hxg6 Se4 21.Sxe4 d5 22.Sxf6+ 1-0

(40) Schäfer,Hans – Schleu,Günther [D11]

Win 2010-B (2.2), 10.11.2010

1.e3 d5 2.d4 Sf6 3.c4 c6 4.Sf3 Sbd7 5.b3 e6 6.Ld3 Le7 7.0-0 Se4
8.Lxe4 dxe4 9.Se5 Sf6 10.f4 exf3 11.Dxf3 Dc7 12.a4 Ld7 13.La3 c5
14.Sxd7 Dxd7 15.d5 exd5 16.Lb2 0-0 17.Sc3 dxc4 18.Se4 Sxe4
19.Dxe4 f6 20.Tad1 Dc6 21.Dxc4+ Tf7 22.La1 Ld6 23.h3 Te8 24.e4
Le5 25.Lxe5 Txe5 26.Tf5 Dc7 27.Te1 g6 28.Txe5 Dxe5 29.Dd5 Dc3
30.Td1 Kg7 31.Dc4 De3+ 32.Kh1 Te7 33.Dd5 b6 34.Dd3 Txe4 35.Dxe3
Txe3 36.Td7+ Kh6 37.Txa7 Txb3 38.Td7 c4 39.Td4 c3 40.Kh2 c2
41.Th4+ Kg7 42.Tc4 h5 43.Txc2 h4 44.Tc7+ Kh6 45.Tc4 g5 46.Td4
Kg6 47.Td8 Ta3 48.Td6 Txa4 49.Txb6 Te4 50.Tb2 Kf5 51.Tf2+ Ke5
52.Ta2 f5 53.Ta8 Kf4 54.Ta1 g4 55.hxg4 Kxg4 56.Ta8 Kf4 57.Ta1 Te3
58.Tf1+ Kg4 59.Ta1 Te2 60.Ta3 f4 61.Tf3 Te3 62.Tf1 h3 63.Tf2 Tg3
64.gxh3+ Txh3+ 65.Kg1 Tg3+ 66.Kf1 f3 67.Tb2 Kh3 68.Tb7 Tg2
69.Th7+ Kg3 70.Tg7+ Kh3 71.Th7+ Kg3 72.Tg7+ Kf4 73.Txg2 fxg2+
74.Kxg2

$\frac{1}{2}$ - $\frac{1}{2}$

Pinneberger Winterturnier 2010

(41) Schleu,Günther – Sachse,Theo [D02]

Win 2010-B (2.3), 10.11.2010

1.d4 d5 2.Sf3 Lf5 3.Lf4 h6 4.h3 e6 5.Sbd2 Lb4 6.c3 Ld6 7.Se5 Dh4
8.Lg3 Df6 9.e3 Se7 10.Sdf3 Sec6 11.Le2 0-0 12.0-0 Lxe5 13.dxe5 De7
14.Dd2 Sd7 15.Tac1 Le4 16.c4 Lxf3 17.Lxf3 Scxe5 18.Le2 Sxc4
19.Lxc4 dxc4 20.Txc4 c6 21.Td4 Tad8 22.Ld6 Df6 23.Lxf8 Kxf8
24.Txd7 Txd7 25.Dxd7 g6 26.Dxb7 a5 27.Td1 c5 28.Tc1 Df5 29.Dc8+
Kg7 30.Dxc5 Df6 31.Dc3 e5 32.Dxa5 g5 33.Dc3 Kg6 34.Dc6 Kf5
35.Dxf6+ Kxf6 36.a4 1-0

(42) Sachse,Theo – Schäfer,Hans [C41]

Win 2010-B (2.4), 2010

1.e4 e5 2.Sf3 d6 3.h3 c5 4.Lc4 Sd7 5.a3 Sb6 6.La2 Le6 7.b3 Le7 8.d3
f5 9.exf5 Lxf5 10.Lb2 g6 11.Sbd2 Sf6 12.Sg5 Sfd5 13.Sdf3 Lxg5
14.Sxg5 Dxg5 15.g3 Kd7 16.Df3 Le6 17.c4 Thf8 18.Dg2 Tab8 19.cxd5
Lxd5 20.Dg1 Lxh1 21.Dxh1 Kc7 22.h4 Df5 23.Df1 Df3 24.Lc1 e4
25.dxe4 Dxe4+ 26.Le3 a6 27.Tc1 Sd5 28.Dc4 Df3 29.b4 Sxe3 30.fxe3
Dxe3+ 31.Kd1 Tbe8 32.bxc5 Dxc5 33.Dxc5+ dxc5 34.Txc5+ Kb6
35.Tc3 Tf1+ 36.Kc2 Te2+ 37.Kb3 Tff2 38.Kc4 Txa2 39.Te3 Tf7 40.Kb3
Taf2 41.Te6+ Ka7 42.g4 T7f3+ 0-1

(43) Weiler,Udo – Schleu,Günther [B23]

Win 2010-B (2.4), 09.12.2010

1.e4 c5 2.Sc3 Sc6 3.f4 e6 4.g3 Le7 5.Sf3 a6 6.d3 b5 7.Le3 Lb7 8.Dd2
Dc7 9.d4 cxd4 10.Sxd4 Td8 11.Lg2 Sf6 12.0-0-0 d5 13.exd5 Sxd5
14.Sxd5 exd5 15.Df2 0-0 16.Sxc6 Dxc6 17.Lb6 Tc8 18.Lxd5 Lc5
19.Lxc5 Dxc5 20.Dxc5 Txc5 21.Lxb7 a5 22.Td5 Txd5 23.Lxd5 Td8
24.Td1 Kf8 25.b3 b4 26.Le4 Txd1+ 27.Kxd1 h6 28.Kd2 Ke7 29.Ld5 f6
30.Kd3 Kd6 31.Kc4 1-0

(44) Schäfer,Hans – Weiler,Udo [A00]

Win 2010-B (2.5), 30.11.2010

[Rück]

1.e3 e5 2.d4 exd4 3.Dxd4 Sc6 4.Dd1 b6 5.c4 Lc5 6.b3 Df6 7.Dc2
Lb4+ 8.Ke2 Sge7 9.Lb2 Dh6 10.Lc3 Lb7 11.Lxb4 Sxb4 12.Dc3 Sbc6
13.Sf3 0-0-0 14.Sbd2 d5 15.Td1 d4 16.Sxd4 Sxd4+ 17.exd4 The8
18.Dh3+ Dxh3 19.gxh3 Lxh1 20.Ke3 g5 21.Kd3 Sc6 22.Le2 Txd4+
23.Kc3 Txe2 0-1

Pinneberger Winterturnier 2010

(45) Marx,Alexander (1600) – Erdmann,Rainer [B38]

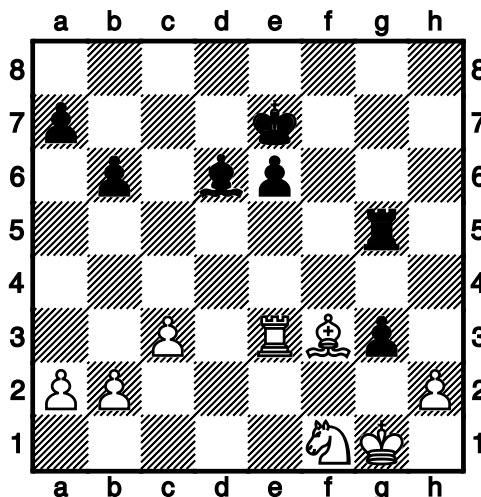
Win 2010-H (1.2), 10.11.2010

1.d4 Sf6 2.c4 g6 3.Sc3 Lg7 4.e4 d6 5.Sf3 c5 6.Le2 0-0 7.0-0 cxd4
8.Sxd4 Sc6 9.Le3 Sd7 10.Tb1 Sxd4 11.Lxd4 Lxd4 12.Dxd4 Db6
13.Dd2 Se5 14.Sd5 Dd8 15.f4 Sc6 16.f5 Kg7 17.f6+ exf6 18.Sxf6 Db6+
19.Kh1 Dd4 20.Df4 De5 21.Dh4 h6 22.b4 Lf5 23.exf5 Dxf6 24.Dxf6+
Kxf6 25.fxf6+ Kxf6 26.Lf3 Se5 27.Lxb7 Tab8 28.Le4+ f5 29.Ld5 Sg4
30.Tfe1 Tfe8 31.Txe8 Txe8 32.Kg1 Te2 33.a4 Se3 34.Tc1 Kf6 35.Lf3
Ta2 36.Tc3 f4 37.g3 Ke5 38.a5 Kd4 39.Tc1 fxf3 40.hxf3 Sxc4 41.Lh5
Se3 42.Lf3 Tb2 43.Tc7 Tb1+ 44.Kh2 Txb4 45.Txa7 Sf5 46.a6 d5
47.Ta8 Ta4 48.a7 Se3 49.Kh3 Sc4 50.Lxd5 Sb6 51.Lc6 Sxa8 52.Lxa4
Kc5 53.Ld1 Kb6 54.Lf3 Kxa7 55.Lxa8 Kxa8 56.Kh4 Kb7 57.Kh5 Kc6
58.Kxh6 Kd5 59.g4 Ke6 60.g5 Kf7 61.Kh7 1-0

(46) Zimmermann,Manfred (1837) – Iwanow,Thomas (1834)

[B00] Win 2010-H (1.3), 10.11.2010

1.e4 b6 2.d4 Lb7 3.Sd2 e6 4.Sgf3 c5 5.c3 cxd4 6.Sxd4 Sc6 7.S4b3
Sf6 8.Le2 Dc7 9.0-0 d5 10.exd5 Sxd5 11.Se4 Td8 12.De1 Le7 13.Kh1
Sf4 14.Lxf4 Dxf4 15.f3 0-0 16.Df2 f5 17.Sg3 Ld6 18.Tfd1 Dh4 19.De1
Tf6 20.Sf1 Dxe1 21.Txe1 Kf7 22.Ted1 Ke7 23.Td2 Lf4 24.Txd8 Kxd8
25.Td1+ Ke7 26.Lb5 Ld6 27.Le2 Th6 28.Kg1 Tg6 29.Kh1 Tf6 30.Lb5
g5 31.Le2 h5 32.Kg1 g4 33.Kf2 Tg6 34.g3 Se5 35.Sbd2 gxf3 36.Sxf3
Sg4+ 37.Kg1 Lxf3 38.Lxf3 Se3 39.Td3 f4 40.Lxh5 Tg5 41.Lf3 fxf3
42.Txe3



[42.h4] 42...gxh2+ 43.Kf2 Tg1 [43...Th5]

44.Ke2 h1D 45.Lxh1 Txh1 46.Sg3 Th2+ 47.Kd3 Txb2 48.Se2 [unklare
Notation] 1/2-1/2

(47) Brückner, Gerhard (1903) – Rakhmanov, Vsevolod (1712) [C02] Win 2010-H (1.4), 10.11.2010

1.e4 e6 2.d4 d5 3.e5 c5 4.c3 Sc6 5.Sf3 cxd4 6.cxd4 Da5+ 7.Sc3 f6
8.Ld3 fxe5 9.Sxe5 Sf6 10.0-0 Ld6 11.Sb5 Lb8 12.Sg4 Dd8 13.Sxf6+
Dxf6 14.Dh5+ g6 15.Dh6 a6 16.Sc3 Ld6 17.Lg5 Df8 18.Dh4 Le7
19.Tae1 Kd8 20.Lxe7+ Sxe7 21.Dg3 Sf5 22.De5 Tg8 23.Sxd5 exd5
24.Dxd5+ Ld7 25.Dxb7 Tc8 26.Db6+ Tc7 27.Lxa6 Dd6 28.Db8+ Lc8
29.Lxc8 Txc8 30.Db3 Tg7 31.Te5 Td7 32.Dg8+ 1-0

(48) Grothkopp, Dietrich (1688) – Tornier, Siegfried (1549) [E14] Win 2010-H (1.5), 10.11.2010

1.d4 d5 2.c4 Sf6 3.Sc3 e6 4.Sf3 Le7 5.e3 0-0 6.Ld3 Sbd7 7.0-0 c5
8.b3 b6 9.Lb2 Lb7 10.Tc1 h6 11.cxd5 exd5 12.Se5 cxd4 13.exd4 Ld6
14.Te1 Te8 15.Sb5 Lb8 16.Sc6 Lxc6 17.Txc6 Txe1+ 18.Dxe1 a6
19.Dc1 axb5 20.g3 La7 21.Lxb5 Sf8 22.La3 Se6 23.Lb2 De7 24.La3
De8 25.Lb2 Sg5 26.a4 De4 0-1

(49) Rakhmanov, Vsevolod (1712) – Grothkopp, Dietrich (1688) [B34] Win 2010-H (2.2), 10.11.2010

1.e4 c5 2.Sf3 Sc6 3.d4 cxd4 4.Sxd4 g6 5.Le3 Lg7 6.c3 Sf6 7.f3 0-0
8.Sd2 a6 9.S2b3 d6 10.Le2 Ld7 11.Dd2 Tc8 12.Lh6 Se5 13.Lxg7 Kxg7
14.0-0 b5 15.Kh1 Sc4 16.Dc1 Db6 17.Lxc4 Txc4 18.De3 Tb8 19.Sd2
Tc7 20.Sc2 Dxe3 21.Sxe3 Le6 22.Tfc1 Tbc8 23.Kg1 d5 24.exd5 Sxd5
25.Sxd5 Lxd5 26.Td1 Td7 27.Kf2
1/2-1/2

(50) Iwanow, Thomas (1834) – Brückner, Gerhard (1903) [A40] Win 2010-H (2.3), 10.11.2010

1.d4 e5 2.dxe5 d6 3.exd6 Lxd6 4.Sf3 Sc6 5.e3 Lg4 6.Le2 Sf6 7.Sbd2
0-0 8.0-0 De7 9.c3 Tad8 10.De1 Se5 11.Sxe5 Dxe5 12.g3 Lh3 13.Lf3
Lxf1 14.Dxf1 b5 15.Dg2 Tfe8 16.Sb3 c5 17.Lc6 Lc7 18.Ld2 Te6 19.Lf3
a5 20.e4 g5 21.Le3 Lb6 22.Te1 a4 23.Sc1 c4 24.Se2 Lxe3 25.fxe3 g4
26.Sd4 gxf3 27.Dxf3 Dxe4 28.Df1 Tb6 29.Te2 Sg4 30.Sf3 Tf6 31.Kg2
Sxe3+

0-1

(51) Linke,Harry (1662) – Marx,Alexander (1600) [C11]
Win 2010-H (2.5), 10.11.2010

1.e4 e6 2.d4 d5 3.Sd2 dxe4 4.Sxe4 Sf6 5.Lg5 Le7 6.Lxf6 Lxf6 7.Sf3
Le7 8.Ld3 b6 9.0-0 Lb7 10.c3 Sd7 11.Dc2 Sf6 12.Se5 a6 13.f4 Dd5
14.Tae1 Sd7 15.Sxf7 Tf8 16.Seg5 Sf6 17.Sxe6 Dc6 18.Sxf8 Kxf7
19.Se6 h6 20.Lg6+ Kg8 21.Sxg7 Ld6 22.Sf5 1-0

(52) Brückner,Gerhard (1903) – Erdmann,Rainer [B12]
Win 2010-H (3.3), 10.11.2010

1.e4 c6 2.d4 d5 3.e5 Lf5 4.g4 Le4 5.f3 Lg6 6.h4 h5 7.e6 fxe6 8.Ld3
Lxd3 9.Dxd3 Kf7 10.g5 Dc7 11.Se2 Sd7 12.Sf4 Sgf6 13.gxf6 exf6
14.Tg1 f5 15.Sg6 Dh2 16.Sxh8+ Kg8 17.Le3 Kxh8 18.Sd2 Le7 19.0-0-
0 Tf8 20.Lg5 Lf6 21.Th1 Db8 22.f4 c5 23.Lxf6 Sxf6 24.dxc5 Dxf4
25.Tdf1 Da4 26.Kb1 Sg4 27.Thg1 Tc8 28.Sb3 Tc6 29.Dd2 Ta6 30.a3
De8 31.Te1 Df8 32.Db4 Dc8 33.Df4 Kh7 34.Sd4 g6 35.c6 e5 36.Txe5
Sxe5 37.Dxe5 bxc6 38.De7+ Kh6 39.Dg5+ 1-0

(53) Grothkopp,Dietrich (1688) – Iwanow,Thomas (1834)
[D31] Win 2010-H (3.4), 10.11.2010

1.d4 d5 2.c4 c6 3.Sc3 e6 4.e3 Lb4 5.Ld2 Sd7 6.Sf3 f5 7.Ld3 Sgf6
8.a3 Ld6 9.Sg5 De7 10.f4 Sf8 11.b4 h6 12.Sf3 Ld7 13.Se5 Lxe5
14.fxe5 Se4 15.Sxe4 fxe4 16.Le2 g6 17.0-0 Sh7 18.Db3 b6 19.Tac1
Tf8 20.Txf8+ Sxf8 21.b5 Tc8 22.a4 Kd8 23.Lb4 De8 24.Ld6 cxb5
25.axb5 Lxb5 26.Da3 Lxc4 27.Lxc4 dxc4 28.Lxf8 Dd7 29.Ld6 Tc6
30.Tf1 Txd6 31.exd6 Ke8 32.Db4 b5 33.Dc5 a5 34.Db6 1-0

(54) Tornier,Siegfried (1549) – Rakhmanov,Vsevolod (1712)
[C00]
Win 2010-H (3.5), 10.11.2010

1.e4 e6 2.Sc3 d5 3.d3 d4 4.Sce2 c5 5.Sf3 Sc6 6.g3 e5 7.Lg2 Le7
8.Ld2 h6 9.c3 f5 10.Sfg1 Sf6 11.f3 Dc7 12.Tc1 0-0 13.Sh3 fxe4 14.fxe4
Sg4 15.cxd4 Sxd4 16.Sxd4 exd4 17.Sf4 Dd6 18.0-0 Se5 19.a3 Kh7
20.Tf2 g5 21.Sh3 Lg4 22.Df1 Txf2 23.Sxf2 Tf8 24.Le1 Sf3+ 25.Kh1
Sxe1 26.Dxe1 Lf3 27.Tc2 Df6 28.Td2 h5 29.Lxf3 Dxf3+ 30.Kg1 g4
31.De2 De3 32.Dd1 Lg5 33.Te2 Df3 34.Df1 Le3 35.De1 h4 36.gxh4 g3
37.hxg3 Dxg3+ 38.Kf1 Dh3+
0-1

Pinneberger Winterturnier 2010

(55) Iwanow,Thomas (1834) – Tornier,Siegfried (1549) [D02]
Win 2010-H (4.2), 10.11.2010

1.d4 d5 2.Sf3 Sf6 3.Lf4 Sc6 4.h3 e6 5.e3 Le7 6.Sbd2 0-0 7.c3 a6 8.Ld3
Se8 9.e4 g6 10.Lh6 Sg7 11.g4 b5 12.a3 Te8 13.e5 f5 14.Dc2 Dd7
15.Sb3 Sd8 16.Lg5 Lxg5 17.Sxg5 De7 18.f4 Sb7 19.Df2 Ld7 20.Dh4
h5 21.Le2 Tac8 22.Tg1 fyg4 23.hxg4 Tf8 24.gxh5 Sf5 25.Dh3 Kg7
26.hxg6 Th8 27.Lh5 c5 28.Td1 cxd4 29.Sxd4 Sc5 30.Sxf5+ exf5
31.Txd5 Le6 32.Sxe6+ Dxe6 33.Td6 Da2 34.Dxf5 Txh5 35.Dxh5 Db1+
36.Dd1 De4+ 37.De2 Dxf4 38.Tf1 Dh4+ 39.Kd1 [Notation unklar]
39...Da4+ 40.Dc2 Dg4+ 41.Kc1 Te8 42.Df5 Dxf5 43.Txf5 Te7 44.Kc2
Sd7 45.Tf7+ 1-0

(56) Erdmann,Rainer – Grothkopp,Dietrich (1688) [B12]
Win 2010-H (4.3), 10.11.2010

1.e4 c6 2.d4 d5 3.e5 Lf5 4.g4 Ld7 5.h4 e6 6.a3 c5 7.c3 Db6 8.b4 c4
9.a4 a6 10.Se2 Sc6 11.Le3 f6 12.f4 fxe5 13.a5 Da7 14.fxe5 Sxe5
15.Sg3 Ld6 16.Sh5 g6 17.Lg5 gxh5 18.dxe5 Lxe5 19.De2 Db8 20.Lh3
Lg3+ 21.Kd1 h6 22.Dc2 Se7 23.Lf6 Tf8 24.g5 hxg5 25.hxg5 h4 26.Tf1
Dd6 27.Dh7 0-0-0 28.Dxe7 1-0

(57) Linke,Harry (1662) – Brückner,Gerhard (1903) [C44]
Win 2010-H (4.4), 10.11.2010

1.e4 e5 2.Sf3 Sf6 3.d3 Sc6 4.Le2 b6 5.0-0 Lb7 6.Sc3 Le7 7.Sd5 h6
8.Sxe7 Dxe7 9.c4 g5 10.Le3 Tg8 11.a3 Sd8 12.b4 Se6 13.Sxe5 Sf4
14.Lxf4 gxf4 15.Sf3 h5 16.e5 Sg4 17.d4 0-0-0 18.h3 d6 19.Dc1 dxe5
20.dxe5 Sxe5 21.Dxf4 Kb8 22.Tfe1 Sg6 23.Dg5 f6 24.De3 Dg7 25.Lf1
Lxf3 26.Dxf3 Se5 27.De4 Td4 28.De3 Td3 29.De4 Sf3+ 30.Kh1 Sxe1
31.Txe1 Txh3+ 32.Kg1 Txa3 33.g3 f5 34.Dd5 f4 35.Lg2 f3 36.Lxf3 Txf3
37.Dxf3 h4 38.Dc6 Df7 39.Kg2 Tf8 40.f3 hxg3 41.Kxg3 Df4+ 42.Kg2
Dd2+ 43.Kf1 Dd3+ 44.Kf2 Dd4+ 45.Te3 Th8 46.De4 Db2+ 47.Te2 Dxb4
48.Dc6 Df8 49.Te4 Dd8 50.Ke3 a5 51.Te5 Dd6 52.Dxd6 cxd6 53.Te7
Tf8 54.Ke4 a4 55.Td7 Tf6 56.f4 a3 57.Th7 Tg6 58.Th3 Tg2 59.Txa3
Tc2 60.Kd4 Tf2 61.Kd5 ½-½

(58) Marx,Alexander (1600) – Zimmermann,Manfred (1837)
[E92] Win 2010-H (4.5), 10.11.2010

1.d4 Sf6 2.c4 g6 3.Sc3 Lg7 4.e4 d6 5.Sf3 0-0 6.Le2 e5 7.d5 De7 8.0-0
Sbd7 9.Sd2 a6 10.a4 a5 11.Sb3 b6 12.Lg5 h6 13.Le3 Kh7 14.Dc2 g5

Pinneberger Winterturnier 2010

15.Sb5 Dd8 16.Ta3 Th8 17.f4 gxf4 18.Lxf4 Kg8 19.Lg3 Sf8 20.Lh4
Sg6 21.Lg3 Lg4 22.h3 Ld7 23.Sd2 Tc8 24.Sf3 h5 25.Sh4 Th6
[25...Sxd5 26.cxd5 Sxh4]
26.Taf3 De7 27.Sf5 Lxf5 28.Txf5 Tf8 29.Sa7 Dd7 30.Txf6 Lxf6 31.Txf6
Kg7 32.Tf3 h4 33.Lh2 Se7 34.Sb5 Tf6 35.Txf6 Kxf6 36.Lg4 Dd8
37.Df2+ Kg7 38.Dxh4 Sg6 39.Dg3 De7 1-0

(59) Brückner, Gerhard (1903) – Marx, Alexander (1600) [C02]
Win 2010-H (5.2), 10.11.2010

1.e4 e6 2.d4 d5 3.e5 Se7 4.Ld3 Sf5 5.Sf3 c5 6.c3 Sc6 7.0-0 Le7
8.dxc5 Sh4 9.Sxh4 Lxh4 10.f4 Ld7 11.b4 g6 12.Sa3 a6 13.Sc2 Se7
14.g3 Lxg3 15.hxg3 Sf5 16.Lxf5 gxf5 17.Sd4 Tg8 18.Kf2 Ke7 19.Dh5
Tg7 20.Dh4+ 1-0

(60) Grothkopp, Dietrich (1688) – Linke, Harry (1662) [D20]
Win 2010-H (5.3), 10.11.2010

1.d4 d5 2.c4 dxc4 3.e4 e6 4.Lxc4 Lb4+ 5.Sc3 c5 6.Le3 Sf6 7.f3 Da5
8.Sge2 b5 9.Lb3 c4 10.Lc2 0-0 11.0-0 Td8 12.a3 Lxc3 13.bxc3 Sc6
14.De1 Dc7 15.Dh4 e5 16.h3 Se8 17.f4 f6 18.Tf2 a5 19.Taf1 De7
20.fxe5 g5 21.exf6 Df7 22.Dxg5+ Kh8 23.Dxb5 Ta6 24.Dg5 Sd6 25.e5
Tg8 26.Dh4 Sb5 27.Lh6 Td8 28.Lg7+ 1-0

(61) Tornier, Siegfried (1549) – Erdmann, Rainer [B20]
Win 2010-H (5.4), 10.11.2010

1.e4 c5 2.Lc4 e6 3.Sc3 Sc6 4.Sf3 a6 5.a4 b6 6.0-0 d6 7.d3 Le7 8.Ld2
Sf6 9.Se2 0-0 10.c3 d5 11.exd5 exd5 12.Lb3 Ld6 13.Lg5 Le6 14.Lc2
h6 15.Lh4 d4 16.h3 Le7 17.Sf4 Lf5 18.Lg3 g5 19.Se2 Lg6 20.Se5 Tc8
21.Sxg6 fxc6 22.Dd2 Sh5 23.Tae1 Ld6 24.Lxd6 Dxd6 25.h4 Tf5 26.g4
Se5 27.f4 Sxg4 28.hxg5 hxg5 29.Tf3 Tcf8 30.Tef1 Se3 31.Lb3+ Kg7
32.T1f2 g4 33.Txe3 dxe3 34.Dxe3 g5 35.d4 gxf4 36.De4 f3 37.dxc5
De5 38.Dxe5+ Txe5 39.Sd4 bxc5 40.Se6+ Txe6 41.Lxe6 Tf4 42.Ld5
Sf6 43.Lc6 Se4 44.Tf1 Kf6 45.Td1 g3 46.Lb7 Th4 47.Td3 f2+ 0-1

(62) Rakhmanov, Vsevolod (1712) – Iwanow, Thomas (1834)
[C02] Win 2010-H (5.5), 10.11.2010

1.e4 e6 2.d4 d5 3.e5 c5 4.c3 Sc6 5.Sf3 Ld7 6.a3 a5 7.Le3 cxd4
8.cxd4 Sge7 9.Ld3 Sf5 10.Sc3 Sxe3 11.fxe3 Le7 12.0-0 f5 13.exf6
Lxf6 14.Se5 Ke7 15.Sxd7 Dxd7 16.Df3 Taf8 17.Dh5 Kd8 18.Lb5 Dc7
19.Tac1 Db6 20.Lxc6 bxc6 21.Sd1 Kd7 22.Tf2 Le7 23.Tfc2 Tc8 24.Sf2
Db5 $\frac{1}{2}$ - $\frac{1}{2}$

(63) Erdmann,Rainer – Rakhmanov,Vsevolod (1712) [A00]
Win 2010-H (6.2), 10.11.2010

1.b4 Sf6 2.Lb2 e6 3.b5 a6 4.a4 c6 5.c4 axb5 6.axb5 Txa1 7.Lxa1
cxb5 8.cxb5 Da5 9.Sc3 Lb4 10.e3 d5 11.Sf3 Sbd7 12.Db1 0-0 13.Sa2
Le7 14.Lc3 Dd8 15.Le2 Sc5 16.0-0 Sce4 17.Lb4 Lxb4 18.Dxb4 Dd6
19.Db2 Sd7 20.d3 Sef6 21.Sc3 e5 22.d4 exd4 23.Sxd4 Sc5 24.Db4
Lg4 25.Sb3 Lxe2 26.Sxe2 Sce4 27.Da5 h5 28.Sbd4 g6 29.Tc1 Sg4
30.f4 Sxe3 31.Dc7 Sc4 32.Dxb7 Da3 33.Sc2 Dd3 34.Sed4 Sa3 35.Dc6
Sxc2 36.Sxc2 Sc3 37.Kh1 Dd2 38.Tf1 Dxc2 39.f5 Dd3 40.Ta1 Sxb5
41.fxg6 fxg6 42.De6+ Kg7 43.De5+ Kh6 44.h4 Dd4 45.Dg5+ Kg7
46.Te1 Tf7 47.g3 Sc3 48.Tg1 De4+ 49.Kh2 Tf2+ 50.Kh3 Df5+ 51.Dxf5
gxf5 52.Ta1 Se4 53.Ta7+ Kg6 54.Ta6+ Sf6 55.g4 fxg4+ 56.Kg3 Tf3+
57.Kg2 Kf5 58.Td6 Ke5 59.Td8 Kd4 60.Th8 Kd3 61.Th6 Kd2 62.Th8
d4 63.Ta8 d3 64.Ta2+ Ke3 65.Ta3 Ke2 66.Ta6 d2 67.Te6+ Te3
0-1

(64) Linke,Harry (1662) – Tornier,Siegfried (1549) [C50]
Win 2010-H (6.3), 10.11.2010

1.e4 e5 2.Sf3 Sc6 3.Lc4 Le7 4.c3 Sf6 5.d4 d6 6.d5 Sb8 7.Ld3 0-0 8.0-
0 Lg4 9.Le3 h6 10.Sbd2 a6 11.c4 c5 12.Db3 Dc8 13.a4 Sbd7 14.a5
Tb8 15.Ta2 Lh5 16.h3 Te8 17.Sh2 Lg6 18.f4 exf4 19.Lxf4 Sh5 20.Sg4
Sxf4 21.Txf4 Lg5 22.Tf2 h5 23.Sf3 Lh6 24.Sxh6+ gxh6 25.Dc3 Se5
26.Sxe5 Txe5 27.Tf4 Dd7 28.b4 Tbe8 29.bxc5 dxc5 30.Te2 Dd6
31.Lc2 T8e7 32.Df3 Kg7 33.Tf2 Tg5 34.h4 Tge5 35.Tf6 Dd7 36.Tf4
Dd6 37.Dg3 Kh7 38.Tf6 Dd7 39.T2f4 De8 40.Df2 Kg7 41.Dxc5 Lxe4
42.Df2 Lxc2 43.Dxc2 Te1+ 44.Kh2 Td7 45.Dc3 De5 46.Dg3+ Kf8
47.Dg6
1-0

(65) Marx,Alexander (1600) – Grothkopp,Dietrich (1688)
[E91]
Win 2010-H (6.4), 10.11.2010

1.d4 Sf6 2.c4 g6 3.Sc3 Lg7 4.e4 d6 5.Sf3 0-0 6.Le2 Sbd7 7.h3 a6
8.Le3 e5 9.d5 De7 10.Dd2 Sc5 11.Dc2 b6 12.b4 Sb7 13.0-0 Sh5
14.Tfe1 f5 15.exf5 Lxf5 16.Se4 Sf6 17.Ld3 Lxe4 18.Lxe4 Sxe4
19.Dxe4 Sd8 20.Tac1 Sf7 21.Sd4 Sd8 22.Sf3 Sf7

1/2-1/2

Pinneberger Winterturnier 2010

(66) Grothkopp,Dietrich (1688) – Zimmermann,Manfred (1837) [E76] Win 2010-H (7.2), 10.11.2010

1.d4 Sf6 2.c4 g6 3.Sc3 Lg7 4.e4 d6 5.f4 e6 6.Sf3 Sg8 7.Le3 Se7
8.Dd2 c6 9.Ld3 f5 10.e5 d5 11.b3 b6 12.h3 Sa6 13.a3 Sc7 14.0-0 0-0
15.g4 dxc4 16.bxc4 a6 17.Tab1 b5 18.g5 Tb8 19.h4 Kf7 20.h5 Th8
21.Tf2 Ld7 22.h6 Lf8 23.Db2 Sc8 24.d5 cxd5 25.cxd5 Sxd5 26.Sxd5
exd5 27.e6+ 1-0

(67) Tornier,Siegfried (1549) – Marx,Alexander (1600) [C00]
Win 2010-H (7.3), 10.11.2010

1.e4 e6 2.Lc4 d5 3.exd5 exd5 4.Lb3 Sf6 5.d3 Lg4 6.Sf3 De7+ 7.De2
Lxf3 8.gxf3 Sbd7 9.Dxe7+ Lxe7 10.Sc3 c6 11.Ld2 Se5 12.Ke2 d4
13.Se4 Sfd7 14.Thg1 f5 15.Sg5 Sc5 16.f4 Sxb3 17.axb3 Sg6 18.Se6
Kf7 19.Sxd4 Sh4 20.Sf3 The8 21.Sxh4 Lxh4+ 22.Kf3 Te6 23.Tge1 a6
24.Txe6 Kxe6 25.Te1+ Kf7 26.b4 Td8 27.Te2 Td6 28.Le3 Lf6 29.b3
Ld8 30.Te1 Tg6 31.c4 Th6 32.Th1 Lf6 33.d4 Le7 34.c5 Ld8 35.h3 Lc7
36.Ld2 Te6 37.Te1 Th6 38.Th1 Th4 39.Le3 Ke6 40.Kg3 g5 41.Td1
Lxf4+ 42.Lxf4 Txf4 43.f3 Kd5 44.Td3 Txd4 45.Txd4+ Kxd4 46.f4 gxf4+
47.Kxf4 Kc3 48.h4 Kxb3 49.h5 Kxb4 50.Kxf5 a5 0-1

(68) Rakhmanov,Vsevolod (1712) – Linke,Harry (1662) [C26]
Win 2010-H (7.4), 10.11.2010

1.e4 e5 2.Sc3 Sf6 3.Lc4 c6 4.d3 d6 5.f4 Lg4 6.Sf3 Db6 7.Lb3 Sbd7
8.h3 Lxf3 9.Dxf3 exf4 10.Lxf4 Le7 11.Le3 Dc7 12.a3 Se5 13.De2 a6
14.0-0 c5 15.Sd5 Sxd5 16.Lxd5 0-0 17.b3 Kh8 18.c3 f6 19.Tac1 Tab8
20.d4 Sd7 21.Tf4 f5 22.exf5 Lg5 23.Te4 Lxe3+ 24.Txe3 cxd4 25.Te7
dxc3 26.Le6 Dc5+ 27.Kh1 Se5 28.b4 Db6 29.Txc3 Sc6 30.Txc6 bxc6
31.Dg4 Tg8 32.Dg5 Dd4 33.Lxg8 Txg8 34.Te1 Dd5 35.Df4 Tf8 36.Tf1
h6 37.Df3 Dxf3 38.Txf3 Tf6 39.Kg1 Kg8 40.Kf2 Kf7 41.g4 g5 42.Te3 d5
43.Ke2 h5 44.Kd3 hxg4 45.hxg4 Th6 46.Kd4 Th4 47.Tg3 Ke7 48.Kc5
Kd7 49.Kb6 d4 50.Kc5 Th1 51.Kxd4 Kd6 52.Te3 Td1+ 53.Ke4 Tf1
54.Kd3 Tf4 55.Tg3 c5 56.bxc5+ Kxc5 57.Ke3 Kd5 58.Tg2 Ke5 59.Tg1
Ta4 60.Kd2 Txa3 61.Kc2 Ta4 62.Kb3 Te4 63.Kc3 a5 64.Kd2 Kf6
65.Kc3 a4 66.Kb2 Ke5 67.Tg3 Kf6 68.Ka3 1/2-1/2

(69) Iwanow,Thomas (1834) – Erdmann,Rainer [D02]
Win 2010-H (7.5), 10.11.2010

1.d4 d5 2.Sf3 Sf6 3.Lf4 e6 4.e3 Ld6 5.Lg3 0-0 6.Ld3 Te8 7.Se5 c5
8.c3 Dc7 9.Sd2 Sbd7 10.f4 c4 11.Lc2 b5 12.a3 a5 13.0-0 b4 14.axb4

Pinneberger Winterturnier 2010

Db6 15.Df3 Ta7 16.Tfb1 axb4 17.Txa7 Dxa7 18.Sc6 Db6 19.Sxb4
Lxb4 20.cxb4 Dxb4 21.Le1 Db6 22.g4 Sf8 23.g5 S6d7 24.Dg2 f6
25.gxf6 Sxf6 26.Lh4 S8d7 27.Kh1 Dc7 28.Tg1 Te7 29.Sf3 Dd8 30.Se5
Df8 31.Dh3 g6 32.Lxg6 Sxe5 33.fxe5 hxg6 34.Lxf6 Tb7 35.Dh8+ Kf7
36.Dh7+ Ke8 37.Dxg6+ Tf7 38.Dh5 Kd7 39.Tg6 Kc6 40.Dg4 Db4
41.De2 Db3 42.Tg2 Ta7 43.Lh4 Ta1+ 44.Le1 La6 45.Dd2 c3 46.bxc3
Ld3 47.Kg1 Td1 0-1

(70) Linke,Harry (1662) – Iwanow,Thomas (1834) [C05]

Win 2010-H (8.2), 10.11.2010

1.e4 e6 2.d4 d5 3.Sd2 Sf6 4.e5 Sfd7 5.Ld3 c5 6.c3 cxd4 7.cxd4 Sc6
8.Sgf3 Le7 9.0-0 0-0 10.a3 f6 11.Dc2 f5 12.b4 Tf7 13.Sb3 Sf8 14.b5
Sa5 15.Sc5 b6 16.Sb3 Sb7 17.Ld2 Ld7 18.Db2 Sg6 19.g3 Tf8 20.h4 h6
21.a4 Db8 22.Kg2 Tc8 23.Tfc1 Txc1 24.Txc1 Dd8 25.Kh3 Tc8 26.Tg1
Le8 27.g4 Sxh4 28.Sxh4 Lxh4 29.Tg2 fxc4+ 30.Txc4 g5 31.f4 Lh5
32.Txh4 gxh4 33.f5 exf5 34.Lxf5 Tc7 35.Lxh6 Kh8 36.Db1 Tc3+
37.Kh2 Dg8 38.Lf4 Tg3 39.e6 Te3 40.Df1 Dg7 41.Df2 Dg3+ 42.Lxg3
hxg3+ 43.Dxg3 Txc4 44.Kxc4 Ld1 45.Sd2 Lxa4 46.Ld3 Kg7 47.Kf4
Kf6 48.e7 Sd6 49.Lg6 Kxe7 50.Ke5 0-1

(71) Marx,Alexander (1600) – Rakhmanov,Vsevolod (1712)

[D52] Win 2010-H (8.3), 10.11.2010

1.d4 d5 2.c4 e6 3.Sc3 Sf6 4.Lg5 c6 5.e3 Sbd7 6.Sf3 Da5 7.Lxf6 Sxf6
8.Sd2 Lb4 9.Dc1 Se4 10.Scxe4 dxe4 11.a3 Lxd2+ 12.Dxd2 Dxd2+
13.Kxd2 f6 14.c5 b6 15.b4 a5 16.Lc4 b5 17.Lb3 a4 18.Lc2 f5 19.Thf1
Ke7 20.f3 exf3 21.Txf3 Ld7 22.Te1 Taf8 23.h4 g6 24.e4 fxe4 25.Lxe4
Txf3 26.Lxf3 Tf8 27.Te4 Tf6 28.Ke3 h6 29.Te5 Tf5 30.Txf5 gxf5 31.Lh5
Lc8 32.Kf4 Ld7 33.Ke5 Lc8 34.Lg6 Ld7 35.Kf4 Lc8 36.g4 fxc4
37.Kxc4 e5+ 38.Kh5 exd4 39.Kxh6 Kf6 40.h5 Lf5 41.Le8 Le4 42.Ld7
Lf3 43.Le8 d3 44.Lg6 d2 45.Lc2 d1D 46.Lxd1 Lxd1 0-1

(72) Brückner,Gerhard (1903) – Grothkopp,Dietrich (1688)

[B12]

Win 2010-H (8.5), 10.11.2010

1.e4 c6 2.d4 d5 3.e5 Lf5 4.g4 Lg6 5.e6 Dd6 6.exf7+ Lxf7 7.Sf3 h6
8.Se5 Sf6 9.Le3 Sbd7 10.f4 Sxe5 11.dxe5 Db4+ 12.Sd2 d4 13.a3 Dxb2
14.Tb1 Dc3 15.Tb3 Lxb3

0-1

Pinneberger Winterturnier 2010

(73) Tornier, Siegfried (1549) – Brückner, Gerhard (1903)
[C23] Win 2010-H (9.2), 10.11.2010

1.e4 e5 2.Lc4 Lc5 3.Sf3 Sf6 4.Sc3 c6 5.a4 0-0 6.0-0 d5 7.exd5 cxd5
8.Lb3 d4 9.Se2 e4 10.Se1 d3 11.cxd3 exd3 12.Sg3 Lg4 13.Sf3 Sc6
14.h3 Dc7 15.hxg4 Dxc3 16.Sh2 Sd4 17.Lc4 Se2+ 18.Kh1 Sxg4
19.Lxf7+ Txf7 20.Sxg4 Dxc3 0-1

(74) Iwanow, Thomas (1834) – Marx, Alexander (1600) [D02]
Win 2010-H (9.4), 10.11.2010

1.d4 d5 2.Sf3 Sf6 3.h3 g6 4.Lf4 Lg7 5.e3 0-0 6.c4 e6 7.Sc3 Sbd7
8.Sb5 Se8 9.cxd5 exd5 10.Dc2 c6 11.Sc3 Sef6 12.Ld3 Te8 13.0-0 Sh5
14.Lh2 f5 15.Tac1 Shf6 16.b4 Se4 17.b5 Sxc3 18.Dxc3 c5 19.Db2 c4
20.Lb1 a6 21.Tfd1 Db6 22.a4 axb5 23.Dxb5 Dxb5 24.axb5 Ta5 25.Lc2
Txb5 26.Se5 Ta5 27.f4 b5 28.Tb1 Sxe5 29.fxe5 Le6 30.Lg3 Tb8
31.Le1 Ta3 32.Kf2 Lf8 33.Lb4 Ta2 34.Tdc1 Ld7 35.Ke1 Lh6 36.Ld2
Kf7 37.Ke2 Ta3 38.Tf1 Ke6 39.Tf3 Ta2 40.Kd1 Tc8 41.Lb4 Lf8 42.g4
Lxb4 43.gxf5+ Ke7 44.Txb4 1/2-1/2

(75) Erdmann, Rainer – Linke, Harry (1662) [A00]
Win 2010-H (9.5), 10.11.2010

1.b4 e5 2.Lb2 d6 3.e3 a6 4.c4 Sf6 5.Sc3 Le7 6.a4 b6 7.Df3 Ta7 8.d4
exd4 9.exd4 Lg4 10.Dg3 0-0 11.Le2 Lf5 12.Df4 Lg6 13.h4 h5 14.d5
Te8 15.0-0-0 Dd7 16.f3 c5 17.bxc5 dxc5 18.g4 Dd8 19.g5 Sh7 20.Ld3
Sxg5 21.Lxg6 fxg6 22.Dg3 Sh7 23.Dxc6 Lxh4 24.Se4 Lg5+ 25.Kc2 h4
26.Sh3 Lf6 27.Lxf6 Sxf6 28.Shg5 Sxe4 29.Dh7+ Kf8 30.Dh8+ 1-0

(76) Retzlaff, Wolfgang (1731) – Griwenka, Volker (1954)
[D02] Win 2010-M (1.1), 10.11.2010

1.g3 d5 2.Sf3 g6 3.Lg2 Lg7 4.d4 c6 5.0-0 Lg4 6.Se5 Lf5 7.Sd2 Sd7
8.Sxd7 Dxd7 9.Sf3 Sf6 10.Se5 Dc8 11.f3 Lh3 12.c4 Lxg2 13.Kxg2 e6
14.e4 0-0 15.De2 Sd7 16.Sxd7 Dxd7 17.cxd5 cxd5 18.e5 Tac8 19.Le3
Tc7 20.Tac1 Tfc8 21.Txc7 Txc7 22.Tc1 Txc1 23.Lxc1 Dc6 24.Dd2 Lf8
25.b3 a5 26.a3 b5 27.Kf2 Le7 28.Ke2 a4 29.b4 Dc4+ 30.Kf2 Ld8
31.Lb2 Kg7 32.Dc3 Dxc3 33.Lxc3 f6 34.exf6+ Kxf6 35.f4 h5 36.h4 Kf5
37.Kf3 Lc7 38.Lb2 Lb6 39.Lc3 Ld8 40.Lb2 e5 41.fxe5 g5 42.hxg5
Lxg5 43.Kg2 Ke4 44.Kf2 Kd3 45.g4 h4 46.Kf3 Kc2 47.La1 Kb3 48.e6
Kxa3 49.Lc3 Kb3 50.Ld2 a3 51.Lxg5 a2 52.Lxh4 a1D 53.e7 Da8
54.Kf4 Kxb4 55.Le1+ Kc4 56.Ke5 Dh8+ 57.Ke6 Dg8+ 58.Kd6 Dg6+
59.Kc7 Kxd4 60.g5 De8 61.Kd6 Kc4 62.Ke6 b4 63.Lg3 b3
0-1

(77) van Riesen,Klaus (2070) – Schmidt,Roland (1735) [B01]
Win 2010-M (1.2), 10.11.2010

1.e4 d5 2.exd5 Sf6 3.d4 Sxd5 4.Sf3 g6 5.c4 Sf6 6.Le2 Lg7 7.0-0 0-0
8.h3 b6 9.Sc3 Lb7 10.Lf4 a6 11.Dd2 Sbd7 12.Tad1 e6 13.De3 Dc8
14.Lh6 Te8 15.Lxg7 Kxg7 16.Se5 Dd8 17.Lf3 Lxf3 18.Dxf3 Tf8 19.Td3
De7 20.Tfd1 c5 21.Sc6 De8 22.dxc5 bxc5 23.De3 Tc8 24.Se5 Tc7
25.b3 De7 26.g4 Kg8 27.Sf3 Sb8 28.Dh6 Se8 29.Te3 Df6 30.Se4 Dg7
31.Df4 f5 32.Sfg5 De7 33.Sc3 fxg4 34.Dxg4 Tf5 35.Sxe6 Sf6 36.Dg3
Tc8 37.Sd4 1-0

(78) Wegemund,Hubert (1835) – Kuhn,Gerd (2145) [C05]
Win 2010-M (1.3), 10.11.2010

1.e4 e6 2.d4 d5 3.Sd2 Sf6 4.e5 Sfd7 5.Ld3 c5 6.c3 Sc6 7.Se2 g6 8.Sf3
Lg7 9.Lg5 Db6 10.Db1 cxd4 11.cxd4 Sb4 12.0-0 Sxd3 13.Dxd3 f6
14.exf6 Sxf6 15.Da3 Da6 16.Dxa6 bxa6 17.Tfc1 0-0 18.Tc7 Se8 19.Tc3
a5 20.Ta3 Tb8 21.b3 La6 22.Te1 Tc8 23.Txa5 Lxe2 24.Txe2 Sd6
25.Le7 Txf3 26.gxf3 Sf5 27.Txa7 Sxd4 28.Te3 Lh6 29.Kg2 Lxe3
30.fxe3 Sf5 31.Lg5 h6 32.Lf6 Tc2+ [(=)]
33.Kh3 Sxe3 34.Le5 g5 35.a4 Tf2 36.Tb7 Txf3+ 37.Lg3 g4+ 38.Kh4
Tf5 39.Lc7 [unklare Notation] $\frac{1}{2}$ - $\frac{1}{2}$

(79) Hawranke,Dietrich (2135) – Dangelowski,Peter (1805)
[B86] Win 2010-M (1.4), 10.11.2010

1.e4 c5 2.d4 cxd4 3.Sf3 d6 4.Sxd4 Sf6 5.Sc3 a6 6.Lc4 e6 7.0-0 Le7
8.Kh1 Sc6 9.Lb3 Dc7 10.f4 Sa5 11.Le3 Sxb3 12.axb3 Tb8 13.e5 Sd7
14.exd6 Lxd6 15.Sdb5 axb5 16.Sxb5 Dc6 17.Sxd6+ Ke7 18.Sc4 f6
19.Dg4 Tg8 20.Tfd1 Sf8 21.La7 1-0

(80) Griwenka,Volker (1954) – Dangelowski,Peter (1805)
[B23] Win 2010-M (2.1), 10.11.2010

1.e4 c5 2.Sc3 d6 3.f4 Sc6 4.Sf3 e6 5.Lb5 a6 6.Lxc6+ bxc6 7.d3 d5
8.0-0 Sf6 9.De2 Le7 10.b3 Dd7 11.Sa4 a5 12.c4 Lb7 13.Se5 Dd8
14.Lb2 Ld6 15.Sg4 Sh5 16.e5 Le7 17.Df2 0-0 18.De2 g6 19.f5 Lg5
20.f6 Sf4 21.Txf4 Lxf4 22.Df2 h5 23.Dxf4

1-0

Pinneberger Winterturnier 2010

(81) Kuhn,Gerd (2145) – Hawranke,Dietrich (2135) [A00]
Win 2010-M (2.2), 10.11.2010

1.g3 Sf6 2.Lg2 g6 3.e4 d6 4.d4 Lg7 5.Se2 c5 6.dxc5 Da5+ 7.Sbc3
Dxc5 8.Le3 Da5 9.h3 Sc6 10.0-0 0-0 11.f4 Le6 12.Sd5 Lxd5 13.exd5
Sb4 14.Sc3 Tfc8 15.a3 Sa6 16.Ld4 Sd7 17.Lxg7 Kxg7 18.Dd4+ Kg8
19.Tae1 Te8 20.Tf2 Db6 21.Dxb6 Sxb6 22.Tfe2 Kf8 23.b3 Tac8 24.Se4
Sc5 25.Sd2 a5 26.Sf1 Scd7 27.Se3 a4 28.Tb1 Tc7 29.Kf2 Ta8 30.Ke1
axb3 31.Txb3 Sa4 32.Kd2 Sac5 33.Tc3 Sb6 34.Sd1? Tac8 35.Tce3
Td7 1/2-1/2

(82) Schmidt,Roland (1735) – Wegemund,Hubert (1835)
[A86] Win 2010-M (2.3), 10.11.2010

1.c4 f5 2.g3 Sf6 3.Lg2 d6 4.Sc3 g6 5.d4 Lg7 6.Sh3 0-0 7.0-0 Sa6
8.Lg5 c5 9.d5 Sc7 10.Dd2 Tb8 11.a4 a6 12.Lh6 e5 13.dxe6 Lxe6
14.Lxg7 Kxg7 15.Sd5 Lxd5 16.Lxd5 Sfxd5 17.cxd5 Te8 18.Sf4 Te4
19.f3 Te5 20.Dc3 Kg8 21.Tad1 b5 22.axb5 Txb5 23.e4 Db8 24.Sd3
Te8 25.Df6 c4 26.Sf4 Db6+ 27.Kh1 Tf8 28.Dg5 De3 29.De7 Db6
30.Dg5 De3 31.De7 1/2-1/2

(83) Retzlaff,Wolfgang (1731) – van Riesen,Klaus (2070)
[E99] Win 2010-M (2.4), 10.11.2010

1.c4 Sf6 2.Sc3 g6 3.e4 d6 4.d4 Lg7 5.Sf3 0-0 6.Le2 e5 7.0-0 Sc6 8.d5
Se7 9.Se1 Sd7 10.Sd3 f5 11.Ld2 Sf6 12.f3 f4 13.c5 g5 14.cxd6 cxd6
15.h3 a6 16.a4 h5 17.Sf2 Kh8 18.Kh1 Seg8 19.Tg1 Sh6 20.g4 Db6
21.Sd3 hxg4 22.hxg4 Dd4 23.Le1 Db6 24.Lf2 Dd8 25.Tg2 Kg8 26.Db3
Sfxg4 27.Txg4 Sxg4 28.fxg4 f3 29.Lf1 Lxg4 30.Lg3 Dd7 31.Sf2 Tf6
32.Scd1 Lh5 33.Se3 g4 34.Sf5 Lh6 35.Sd3 Te8 36.Lh4 Tg6 37.Sg3
Lg5 38.Lxg5 Txg5 39.Sf2 Lg6 40.De3 Dh7+ 41.Kg1 Dh4 42.Sfh1 Tf8
43.Kf2 Th5 44.Ta3 Th7 45.Tc3 Dh2+ 46.Ke1 Dxb2 47.Sf2 Db1+ 48.Sd1
Tg7 49.Ld3 Da1 50.Lc2 Da2 51.Dc1 b5 52.Db2 Dxb2 53.Sxb2 bxa4
54.Lxa4 Tb7 55.Sd1 Tb4 56.Lc2 Le8 57.Sf5 La4 58.Sxd6 g3 59.Lxa4
f2+ 60.Kf1 g2+ 61.Kxg2 f1D+ 62.Kh2 Tf2+ 63.Sxf2 Dxf2+ 64.Kh3 Txa4
65.Tc8+ Kh7 66.Tc7+ Kg6 67.Tc3 Ta1 68.Tg3+ Kh5

0-1

Pinneberger Winterturnier 2010

(84) van Riesen,Klaus (2070) – Griwenka,Volker (1954)

[B01] Win 2010-M (3.1), 10.11.2010

1.e4 d5 2.exd5 Dxd5 3.Sc3 Da5 4.d4 c6 5.Ld2 Lf5 6.Sf3 e6 7.Lc4 Sf6
8.0-0 Db6 9.Lb3 Ld6 10.h3 Sbd7 11.a4 a5 12.De2 0-0-0 13.Le3 Sd5
14.Sd2 S7f6 15.Sc4 Dc7 16.Ld2 Sf4 17.De3 S6d5 18.Sxd5 Sxd5
19.Df3 b6 20.Sxd6+ Dxd6 21.Tad1 Kb7 22.c4 Sf6 23.Lf4 Db4 24.Ld2
Dd6 25.Lf4 Db4 26.Le5 Le4 27.De3 h5 28.Tc1 Thg8 29.Tc3 Lf5 30.c5
Sd5 31.Lxd5 Txd5 32.Tb3 Dxa4 33.Txb6+ Ka7 34.De2 1-0

(85) Wegemund,Hubert (1835) – Retzlaff,Wolfgang (1731)

[B50] Win 2010-M (3.2), 10.11.2010

1.e4 c5 2.Sf3 d6 3.Lc4 e5 4.c3 Sc6 5.0-0 Lg4 6.h3 Lxf3 7.Dxf3 Df6
8.De2 g5 9.Sa3 a6 10.Sc2 Sge7 11.Se3 h5 12.g3 Dg6 13.Sd5 Tc8
14.a4 Lh6 15.d3 Sxd5 16.Lxd5 Tc7 17.Le3 Se7 18.d4 cxd4 19.cxd4
Lg7 20.dxe5 Lxe5 21.Tac1 Sxd5 22.exd5 Txc1 23.Txc1 Df5 24.Tc7
Dxh3 25.Lxg5 0-0 26.Txb7 f6 27.Dd3 f5 28.Tb4 f4 29.Dg6+ Kh8
30.Tb7 1-0

(86) Hawranke,Dietrich (2135) – Schmidt,Roland (1735)

[E14] Win 2010-M (3.3), 10.11.2010

1.d4 Sf6 2.Sf3 e6 3.c4 b6 4.e3 Lb7 5.Ld3 Lb4+ 6.Sbd2 0-0 7.0-0
Lxd2 8.Sxd2 d6 9.b3 Sbd7 10.Lb2 e5 11.d5 Sc5 12.Lc2 a5 13.f4 Lc8
14.h3 De7 15.fxe5 dxe5 16.Sf3 e4 17.Sd4 De5 18.Tb1 Dg5 19.Kh2
Sh5 20.Se2 f5 21.Dd4 Tf6 22.De5 Ld7 23.Ld4 Te8 24.Dxc7 Tc8
25.Lxf6 gxf6 26.Dd6 Dxe3 27.Tbe1 $\frac{1}{2}$ - $\frac{1}{2}$

(87) Dangelowski,Peter (1805) – Kuhn,Gerd (2145) [A43]

Win 2010-M (3.4), 10.11.2010

1.d4 c5 2.d5 e6 3.e4 Sf6 4.Sc3 a6 5.a4 d6 6.Le2 exd5 7.exd5 Lf5
8.Sf3 h6 9.Ld3 Lxd3 10.Dxd3 Le7 11.0-0 0-0 12.Te1 Sbd7 13.a5 Te8
14.h3 Dc7 15.Ta4 Lf8 16.Txe8 Txe8 17.Ld2 Se5 18.Df5 Sfd7 19.Kf1 g6
20.Df4 Lg7 21.b3 f5 22.Se2 Sf6 23.c4 Sd3 24.Dg3 Se4 25.Dxg6 Sxd2+
26.Sxd2 Txe2 0-1

(88) Griwenka,Volker (1954) – Kuhn,Gerd (2145) [A00]

Win 2010-M (4.1), 10.11.2010

$\frac{1}{2}$ - $\frac{1}{2}$

(89) Schmidt,Roland (1735) – Dangelowski,Peter (1805)

[B22] Win 2010-M (4.2), 10.11.2010

1.e4 c5 2.c3 Sf6 3.e5 Sd5 4.d4 cxd4 5.cxd4 Sc6 6.Sf3 d6 7.Lc4 dxe5
8.dxe5 e6 9.0-0 Le7 10.De2 Sb6 11.Td1 Dc7 12.Lb3 0-0 13.Sc3 a6
14.Lf4 Sd7 15.Tac1 Da5 16.Lc2 Db4 17.Lg3 Dg4 18.Lb1 Lg5 19.Tc2
Sb4 20.Td4 1-0

(90) Retzlaff,Wolfgang (1731) – Hawranke,Dietrich (2135)

[A22] Win 2010-M (4.3), 10.11.2010

1.c4 e5 2.Sc3 Sf6 3.g3 Lb4 4.Lg2 0-0 5.Se4 Sxe4 6.Lxe4 c6 7.Dc2 g6
8.Lg2 Te8 9.e3 Lf8 10.Se2 d5 11.0-0 dxc4 12.Dxc4 Le6 13.Dc2 Lg7
14.d4 Lg4 15.f3 Lf5 16.Dd1 Db6 17.g4 Le6 18.dxe5 Lxe5 19.Kh1 Sa6
20.Sc3 Sc5 21.Tf2 Tad8 22.Dc2 Lb3 23.De2 Sd3 24.Tf1 Lc4 25.Dc2
Sc5 26.Sa4 Db5 27.Sxc5 Lxf1 28.a4 De2 29.Dxe2 Lxe2 30.Kg1 b6
31.Se4 Lc4 32.f4 Lg7 33.Kf2 Ld5 34.Sg3 Lxg2 35.Kxg2 Td1 36.Kf3
Ted8 37.Ke2 T8d2+ 38.Lxd2 Txa1 39.b4 Txa4 40.e4 Ld4 41.Kd3 c5
42.Se2 Ta3+ 43.Kc4 Ta2 44.Sxd4 cxd4 45.Le1 Te2 46.Lg3 Txe4
47.Kd3 Te8 48.Kxd4 Tc8 49.Kd3 Kf8 50.Lf2 Ke7 51.h4 Kd6 52.Ld4
Kd5 53.Lc3 Tc4 54.Ld2 Td4+
0-1

(91) van Riesen,Klaus (2070) – Wegemund,Hubert (1835)

[B15]

Win 2010-M (4.4), 10.11.2010

1.e4 g6 2.d4 c6 3.Sc3 d5 4.e5 h5 5.Ld3 Sh6 6.h3 Lf5 7.Sf3 Lxd3
8.Dxd3 e6 9.Lg5 Le7 10.Lxe7 Dxe7 11.a4 Sf5 12.Dd2 Sa6 13.0-0 b6
14.Se2 Kf8 15.Ta3 Kg7 16.Tc1 c5 17.c4 dxc4 18.Txc4 Thd8 19.Df4
Td7 20.g4 hxg4 21.hxg4 Sxd4 22.Sfxd4 cxd4 23.Th3 Th8 24.Df6+
Dxf6 25.exf6+ Kxf6 26.Txh8 d3 27.Sc3 d2 28.Sd1 Sc5 29.Th1 Sd3
30.Th3 Kg5 31.Te3 e5 32.Te2 Sf4 33.Txe5+ Kxg4 34.Te3 g5 35.Tg3+
Kh5 36.Kf1 f6 37.Tc2 Kg6 38.f3 Td6 39.Tg1 a6 40.Kf2 Sh3+ 41.Kf1
Sf4 42.Th1 Td3 43.Kf2 b5 44.axb5 axb5 45.Tc3 Td7 46.Se3 Sd3+
47.Txd3 Txd3 48.Ke2 Tb3 49.Sd1 f5 50.Tf1 g4 51.fxg4 fxg4 52.Kxd2
Kg5 53.Ke2 Kh4 54.Kf2 Tf3+ 55.Ke2 Tb3 56.Th1+ Kg3 57.Tg1+ Kf4
58.Kf2 Tf3+ 59.Ke2 Tb3 60.Tg2 Tb4 61.Kf2 Tc4 62.Kg1 Tc1 63.Td2 b4
64.Kg2 b3 65.Td4+ Ke5 66.Td8 Kf4 67.Td7 Tc2+ 68.Kg1 Tc1 69.Kf2
Tc2+ 70.Ke1 Kf3 71.Tf7+ Kg3 72.Tg7 Kf3 73.Txg4 Txb2

½-½

(92) Wegemund, Hubert (1835) – Griwenka, Volker (1954)
[C24] Win 2010-M (5.1), 10.11.2010

1.e4 e5 2.Lc4 Sf6 3.d3 Lc5 4.Sf3 d6 5.c3 0-0 6.0-0 Le6 7.Lxe6 fxe6
8.Db3 Dc8 9.d4 Lb6 10.a4 Sc6 11.d5 exd5 12.exd5 Sd8 13.a5 Lc5
14.Dc4 a6 15.b4 La7 16.Sa3 Sf7 17.Sc2 c6 18.dxc6 bxc6 19.Le3 d5
20.Dh4 Lb8 21.Lc5 Te8 22.Se3 Se4 23.g4 Sxc5 24.bxc5 g6 25.Sg5
Sxg5 26.Dxg5 Dd8 27.Dh6 Df6 28.Tab1 La7 29.Tb7 Te7 30.g5 Df7
31.Txe7 Dxe7 32.Sg4 Tb8 33.Te1 e4 34.Te3 Dg7 35.Dh4 Lxc5 36.Sf6+
Kf8 37.Th3 Ke7 38.Dg4 1-0

(93) Hawranke, Dietrich (2135) – van Riesen, Klaus (2070)
[D01] Win 2010-M (5.2), 10.11.2010

1.d4 Sf6 2.Sc3 d5 3.Lg5 Sbd7 4.Dd3 g6 5.f3 Lg7 6.e4 Sb6 7.e5 Sfd7
8.Dd2 h6 9.Le3 Sf8 10.b3 c6 11.f4 Lf5 12.Sf3 Dc7 13.a4 Lg4 14.a5
Sbd7 15.Le2 Sh7 16.0-0 e6 17.h3 Lxf3 18.Lxf3 Lf8 19.Kh1 Le7 20.Le2
f5 21.exf6 Shxf6 22.Ld3 Tg8 23.De2 0-0-0 24.Lg1 Tde8 25.Sa4 Ld6
26.Lh2 Te7 27.c4 dxc4 28.bxc4 1/2-1/2

(94) Dangelowski, Peter (1805) – Retzlaff, Wolfgang (1731)
[D00] Win 2010-M (5.3), 10.11.2010

1.d4 d5 2.Lf4 Sf6 3.e3 Sc6 4.h3 Lf5 5.Ld3 Lxd3 6.Dxd3 e6 7.Sf3 Ld6
8.Lxd6 Dxd6 9.c3 Sd7 10.Sbd2 Se7 11.0-0 e5 12.dxe5 Sxe5 13.Db5+
Dc6 14.Db3 Sxf3+ 15.Sxf3 Db6 16.Da3 Sf5 17.Tfd1 0-0-0 18.Db3 De6
19.a4 Td6 20.a5 Thd8 21.Ta4 f6 22.Tb4 b6 23.Ta1 Kb7 24.axb6 Txb6
25.Da3 Ta8 26.Ta4 a6 27.Ta5 Dd6 28.Da2 Td8 29.c4 dxc4 30.Txf5 Db4
31.Tc1 Dxb2 32.Dxc4 c6 33.Sd4 Td6 34.Tc5 Dd2 35.Df7+ Kc8
36.De8+ 1-0

(95) Kuhn, Gerd (2145) – Schmidt, Roland (1735) [A00]
Win 2010-M (5.4), 10.11.2010

1.g3 e5 2.d4 exd4 3.Sf3 c5 4.c3 dxc3 5.Sxc3 Sf6 6.e4 d6 7.e5 dxe5
8.Dxd8+ Kxd8 9.Sxe5 Le6 10.Lg2 Kc8 11.Lf4 a6 12.Tc1 Sbd7 13.0-0
Sxe5 14.Lxe5 Sd7 15.Lf4 Ta7 16.Tfd1 Le7 17.Sd5 Kd8 18.Sb6 Ke8
19.Sc8

1-0

Pinneberger Winterturnier 2010

(96) Griwenka,Volker (1954) – Schmidt,Roland (1735) [C24]
Win 2010-M (6.1), 10.11.2010

1.e4 e5 2.Lc4 Sf6 3.d3 Lc5 4.Sf3 d6 5.0-0 0-0 6.c3 h6 7.Te1 Lg4
8.Sbd2 Sbd7 9.Sf1 Lh5 10.Sg3 Lg6 11.Sh4 Lh7 12.Shf5 Lb6 13.Df3
Sc5 14.Sxh6+ gxh6 15.Lxh6 Se6 16.Lxf8 Sg5 17.De2 Dxf8 18.Kh1
Dh6 19.Tad1 Kg7 20.f3 Tg8 21.Sf1 Sh5 22.g3 Lg6 ½-½

(97) Retzlaff,Wolfgang (1731) – Kuhn,Gerd (2145) [A07]
Win 2010-M (6.2), 10.11.2010

1.g3 d5 2.Sf3 Lf5 3.Lg2 Sc6 4.d4 Dd7 5.0-0 Lh3 6.Lxh3 Dxh3 7.Lf4
0-0-0 8.Sbd2 f6 9.e4 dxe4 10.Sxe4 e5 11.Le3 exd4 12.Sxd4 Sxd4
13.Lxd4 c5 14.c3 cxd4 15.cxd4 Kb8 16.Da4 Dd7 17.Dxd7 Txd7
18.Tfd1 Se7 19.Sc5 Td5 20.Tac1 Sc6 21.Se6 g6 22.Tc4 Lh6 23.Sc5
Thd8 24.Sb3 f5 25.Kg2 Lg7 26.Tdc1 Sxd4 27.Sc5 Lf8 28.b4 Lxc5
29.bxc5 Sc6 30.h4 Se5 31.T4c3 Sd3 32.T1c2 Se1+ 0-1

(98) van Riesen,Klaus (2070) – Dangelowski,Peter (1805)
[B98] Win 2010-M (6.3), 10.11.2010

1.e4 c5 2.Sf3 d6 3.d4 cxd4 4.Sxd4 Sf6 5.Sc3 a6 6.Lg5 e6 7.f4 Le7
8.Df3 Dc7 9.0-0-0 Sc6 10.Sxc6 Dxc6 11.Ld3 Tb8 12.Dg3 g6 13.Dh4
Sg8 14.Lxe7 Sxe7 15.Df6 Tg8 16.Td2 b5 17.Thd1 Ld7 18.Lf1 Sc8
19.f5 b4 20.fxe6 Lxe6 21.Sd5 b3 22.axb3 Txb3 23.Td4 Tb7 24.Tc4
Dd7 25.Dc3 Dd8 26.Sf6+ Kf8 27.Sxh7+ Ke7 28.Tc6 Th8 29.Sg5 Lg4
30.Te1 Ld7 31.Txa6 f6 32.Sf3 Th5 33.e5 fxe5 34.Ld3 Lf5 35.Lxf5 Txf5
36.Sd4 Kf6 37.Sxf5 gxf5 38.Dxe5+ 1-0

(99) Wegemund,Hubert (1835) – Hawranke,Dietrich (2135)
[B27] Win 2010-M (6.4), 10.11.2010

1.e4 c5 2.Sf3 g6 3.d4 Lg7 4.c3 cxd4 5.cxd4 d5 6.e5 Lg4 7.Le2 Sc6
8.Sbd2 Sh6 9.0-0 0-0 10.h3 Lxf3 11.Sxf3 Db6 12.b3 Sf5 13.Lb2 e6
14.Te1 Tfe8 15.Lf1 a5 16.Te2 Dd8 17.Lc1 Db6 18.Lb2 a4 19.bxa4 Db4
20.g4 Sfe7 21.Lc1 Dc3 22.Tb2 Sa5 23.Tab1 Dc7 24.Lg5 h6 25.Ld2
Sec6 26.De1 De7 27.Tb5 Da3 28.Dd1 Lf8 29.Kg2 Te7 30.Tc1 Td7
31.Tc3 Dxa2 32.Tb1 Sc4 33.Ta1 Db2 34.Tb3 Sxd4 35.Txb2 Sxb2
36.Dc1 Sxf3 37.Kxf3 Sc4 38.Lf4 g5 39.Lg3 Tc7 40.Kg2 Tac8 41.De1
Lg7 42.Kh2 Sb6 43.a5 Sd7 44.Tb1 Sc5 45.Tc1 Lf8 46.h4 Le7 47.hxg5
hxg5 48.f3 Kg7 49.Lf2 Tc6 50.Lb5 Sd3 51.Lxd3 Txc1 52.Dd2 Th8+
53.Kg2 Thc8 54.Le3 T1c3 55.Lxg5 Txd3 56.Lf6+ Kg8 57.Dh6 Tc2+
58.Kg3 1-0

(100) Dangelowski, Peter (1805) – Wegemund, Hubert (1835)
[A40] Win 2010-M (7.2), 10.11.2010

1.d4 Sc6 2.Lf4 d5 3.e3 Lf5 4.c3 Dd7 5.Sf3 f6 6.h4 e6 7.Ld3 Lg4
8.Sbd2 Ld6 9.Lxd6 cxd6 10.Dc2 f5 11.a3 e5 12.Sh2 e4 13.Lb5 Lh5
14.Da4 Tc8 15.Le2 Lxe2 16.Kxe2 a6 17.Shf1 b5 18.Dd1 Sf6 19.f4 Sh5
20.Th3 Df7 21.Kf2 0-0 22.Sg3 Sxg3 23.Txg3 Sa5 24.De2 Sc4 25.Sxc4
dxc4 26.h5 d5 27.Tg5 Tc6 28.g4 Tf6 29.Tg1 h6 30.Txf5 Txf5 31.gxf5
Dxf5 32.Ke1 Dh3 33.Tg2 Dh1+ 34.Kd2 Db1 35.Dg4 Tf7 36.f5 Dxb2+
37.Kd1 Db1+ 38.Ke2 Dd3+

0-1

(101) Kuhn, Gerd (2145) – van Riesen, Klaus (2070) [A45]
Win 2010-M (7.3), 10.11.2010

1.d4 Sf6 2.Lg5 c5 3.d5 Db6 4.Sc3 Dxb2 5.Ld2 Db6 6.e4 e5 7.f4 d6
8.f5 h5 9.Sf3 Le7 10.Tb1 Dd8 11.Le2 Sbd7 12.0-0 a6 13.a4 Dc7 14.Lc4
Sb6 15.De2 Tb8 16.Tb2 Sxc4 17.Dxc4 Ld8 18.Tfb1 Dd7 19.Lg5 La5
20.Lxf6 gxf6 21.Sd1 Ke7 22.Da2 Lc7 23.a5 Dd8 24.Tb6 Lxb6 25.Txb6
Df8 26.Db3 Dg7 27.Se3 Dh6 28.Sd2 h4 29.Sdc4 Td8 30.Dd3 Df4
31.Tb1 Ld7 32.Tf1 Dg5 33.Sb6 Lb5 34.c4 Ld7 35.Tf3 Tg8 36.Da3 Dh5
37.Kf2 Dg5 38.Dd3 Tg7 39.Db3 Dh6 40.Db1 Dh8 41.Th3 Th7 42.Ke2
Dg8 43.Df1 Dg5 44.Df3 Tg8 45.Kd3 Thg7 46.g3 hxg3 47.hxg3 Td8
48.Ke2 Tgg8 49.Dh1 Dg7 50.Kf2 Th8 51.Kg2 Txh3 52.Dxh3 Th8
53.Dg4 Dh6 54.Dh4 Dxh4 55.gxh4 Txh4 56.Kf3 Tf4+

0-1

(102) Schmidt, Roland (1735) – Retzlaff, Wolfgang (1731)
[B22]
Win 2010-M (7.4), 10.11.2010

1.e4 c5 2.c3 e5 3.Sf3 Sc6 4.d4 cxd4 5.cxd4 exd4 6.Sxd4 Lb4+ 7.Sc3
Df6 8.Sdb5 La5 9.Sd6+ Kf8 10.Sxc8 Txc8 11.Ld2 Sge7 12.Lb5 Dg6
13.0-0 a6 14.La4 Se5 15.Sd5 Sxd5 16.Lxa5 Sf4 17.g3 Dxe4 18.gxf4
Sf3+ 19.Kh1 Dxf4 20.Lb4+ Dxb4 21.Dxd7 Ta8 22.Tac1 b5 23.Lb3 Df4
24.Tc8+ Txc8 25.Dxc8+ Ke7 26.Db7+ Ke8 27.Dc8+ Ke7 28.Db7+

1/2-1/2