

Pinneberger Schachclub von 1932 e.V.



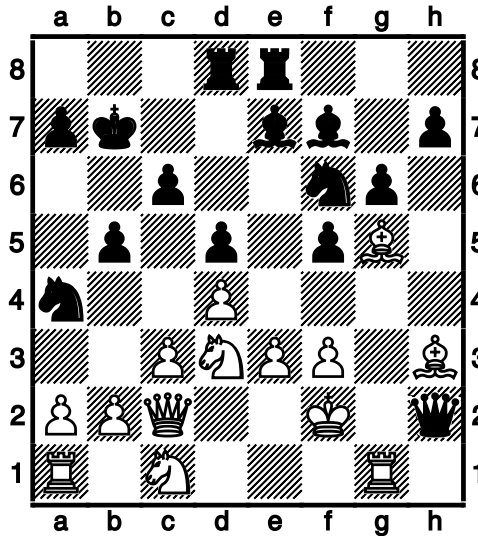
Winterturnier

2005

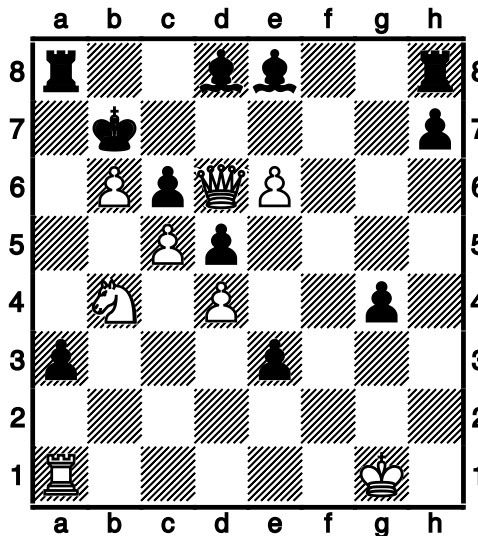
Meisterklasse

(1) Jarnuczak, Detlev – van Riesen, Klaus [A80]

1.d4 f5 2.Sc3 Sf6 3.Lg5 d5 4.e3 e6 5.g4 Le7 6.gxf5 exf5 7.Sge2 Le6
8.Lh3 g6 9.Sf4 Lf7 10.Lh6 c6 11.Dd3 b5 12.f3 Da5 13.Kf2 Sbd7
14.Thg1 0-0-0 15.Sce2 The8 16.c3 Sb6 17.Lg5 Kb7 18.Sc1 Sa4
19.Dc2 Dc7 20.Sfd3 Dxd2+



21.Tg2 Dxd3 22.Sf4 Dxd2+ 23.Sxd2 Se4+ 24.fxe4 Lxd3 25.e5 Le7
26.Sd3 g5 27.b3 Sb6 28.Sb2 Lg6 29.De2 Tf8 30.Th1 Th8 31.c4 a6
32.a4 bxa4 33.bxa4 Lf7 34.c5 Sd7 35.a5 Ka7 36.Sa4 Tb8 37.Sb6 Sxb6
38.axb6+ Kb7 39.Se1 Ta8 40.Sd3 a5 41.Th6 Lg6 42.e6 a4 43.Th1 Lf6
44.Sb4 Le8 45.Ta1 g4 46.Kg1 f4 47.Dd2 fxe3 48.Dh2 Ld8 49.Dd6 a3



50.Txa3 Txa3 51.Dxd8

1-0

(2) Kuhn,Gerd – Schmidt,Roland [A45]

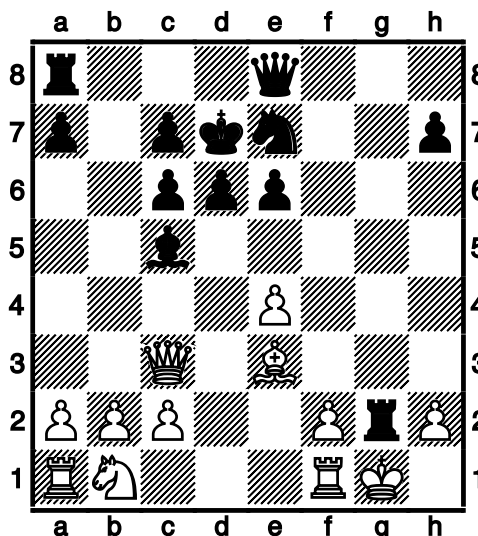
1.d4 Sf6 2.Lg5 e6 3.e4 Le7 4.Ld3 b6 5.De2 Lb7 6.Sd2 d6 7.0-0-0
Sbd7 8.f4 c5 9.Sgf3 h6 10.Lxf6 gxf6 11.d5 e5 12.Sh4 Dc7 13.Sf5 a6
14.Thf1 c4 15.Sxc4 b5 16.Sce3 Tc8 17.Sxe7 Kxe7 18.fxe5 Sxe5
19.Df2 Sd7 20.e5 fxe5 21.Dxf7+ Kd8 22.Sf5 Te8 23.Sg7 Tf8 24.Se6#
1-0

(3) Dörge,Olaf – Griwenka,Volker [C11]

1.e4 e6 2.d4 d5 3.Sc3 dxe4 4.Sxe4 Sd7 5.Sf3 Sgf6 6.Lg5 Le7
7.Sxf6+ Lxf6 8.Lxf6 Dxf6 9.Ld3 0-0 10.0-0 c5 11.c3 cxd4 12.Sxd4 e5
13.Sb3 Te8 14.Dc2 Sf8 15.Sc5 b6 16.Le4 Tb8 17.Sb3 Lg4 18.f3 Ld7
19.Tad1 La4 20.Tf2 Tbd8 21.Tfd2 h6 22.Txd8 Txd8 23.Txd8 Dxd8
24.Dd2 Dxd2 25.Sxd2 g6 26.Sc4 f6 27.Ld5+ Kg7 28.b3 Lb5 29.Sd6
Ld7 30.Kf2 Se6 31.g3 Kf8 32.Lxe6 Lxe6 33.Sb5 a5 34.Sc7 Ke7 35.Sa8
b5 36.Sc7 Ld7 37.Sd5+ Kd6 38.Se3 f5 39.Ke2 Lc6 40.Kf2 $\frac{1}{2}$ - $\frac{1}{2}$

(4) Koester,Gerhard – Brückner,Gerhard [C64]

1.e4 e5 2.Sf3 Sc6 3.Lb5 Lc5 4.0-0 d6 5.d4 exd4 6.Sxd4 Ld7 7.Sxc6
bxc6 8.Lc4 Se7 9.Df3 Le6 10.Lxe6 fxe6 11.Dg4 Kd7 12.Dxg7 Tg8
13.Dc3 De8 14.Le3 Txc2+



Pinneberger Winterturnier 2005

15.Kxg2 Dg6+ 16.Kh1 Tg8 17.Lg5 Dxe4+ 18.f3 Dg6 19.Df6 Dxc5
20.Dxc5 Txc5 21.Sc3 d5 22.Tad1 Ld6 23.Se2 Th5 24.f4 Sf5 25.Td3 e5
26.fxe5 Lxe5 27.h3 Kd6 28.c3 c5 29.Sf4 Lxf4 30.Txf4 Ke5 31.Tg4 c4
32.Tf3 c5 33.b3 cxb3 34.axb3 d4 35.cxd4+ cxd4 36.Kh2 a5 37.Td3
Th6 38.Td2 Tb6 39.Td3 h6 40.Kg1 Tc6 41.Kf2 Td6 42.Kf3 Tf6 43.Te4+
Kd5 44.Tf4 Ke5 45.Te4+ Kd5 46.Te1 Se3+ 47.Ke2 Ke4 48.Ta1 Sd5
49.Tg3 d3+ 50.Ke1 Sb4 51.Txa5 Sc2+ 52.Kd2 Tf2+ 53.Kc1 Tf1+
54.Kd2 Tf2+ 55.Kc3 Se1 56.Ta4+ Kd5 57.Td4+ Kc5 58.b4+ Kb5
59.Td5+ Kc6 60.Tc5+ Kb7 61.Tg7+ Kb8 62.Te5 Tc2+ 63.Kb3 1-0

(5) van Riesen,Klaus – Brückner,Gerhard [A26]

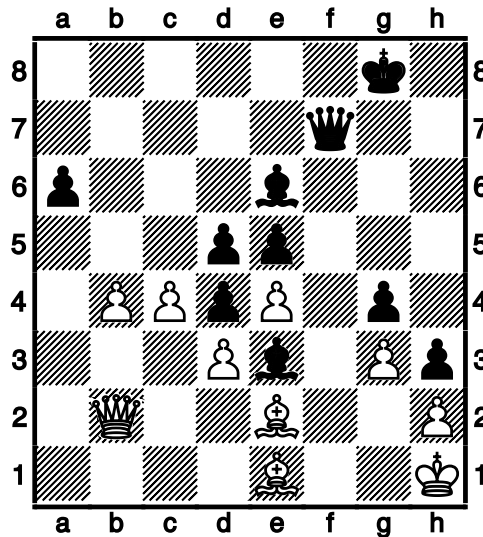
1.c4 Sf6 2.g3 g6 3.Lg2 Lg7 4.Sc3 0-0 5.e4 e5 6.Sge2 d6 7.0-0 Sc6
8.d3 Sd4 9.Sxd4 exd4 10.Se2 c5 11.b4 a6 12.h3 Le6 13.bxc5 dxc5
14.f4 Lxc4 15.e5 Se8 16.dxc4 d3 17.Le3 dxe2 18.Dxe2 Dc7 19.Tab1
Tb8 20.Df2 b6 21.Tfd1 Lh8 22.g4 Sg7 23.f5 Tbd8 24.f6 Se6 25.Td5
Tfe8 26.Tbd1 b5 27.g5 bxc4 28.Dc2 Txd5 29.Txd5 Da5 30.Ld2 c3
31.Lxc3 Db6 32.Td6 Da7 33.h4 c4+ 34.Df2 Db8 35.Tb6 Dd8 36.Td6
Db8 37.Db6 Sf4 38.Dxb8 Txb8 39.Lf3 h6 40.Txa6 hxg5 41.hxg5 Sh3+
42.Kg2 Sxg5 43.Ld5 Td8 44.Ta8 Txa8 45.Lxa8 Se6 46.Kf3 Sc5 47.Lc6
g5 48.a4 1-0

(6) Griwenka,Volker – Koester,Gerhard [A02]

Meisterklasse (2), 24.11.2005

1.f4 Sf6 2.Sf3 g6 3.Sc3 d6 4.e4 Lg7 5.Le2 0-0 6.0-0 c5 7.De1 Sc6 8.d3
a6 9.Sh4 Sd4 10.Ld1 b5 11.f5 b4 12.Se2 Sc6 13.Kh1 e6 14.fxc6 fxc6
15.Sg1 e5 16.Lg5 De8 17.Dd2 Le6 18.Le2 Sd4 19.Ld1 Dd7 20.a3 bxa3
21.Txa3 Sg4 22.Txf8+ Txf8 23.Shf3 h6 24.Lh4 g5 25.Lg3 Db7 26.c3
Sb5 27.Ta1 Sf6 28.c4 Sd4 29.Sxd4 cxd4 30.b4 Sg4 31.Le2 Se3 32.Sf3
Lf6 33.Db2 h5 34.Sd2 g4 35.Sf1 Lg5 36.Sxe3 Lxe3 37.Tf1 Txf1+
38.Lxf1 Lg5 39.Le1 h4 40.g3 h3 41.Kg1 Df7 42.Le2 Le3+ 43.Kh1 d5

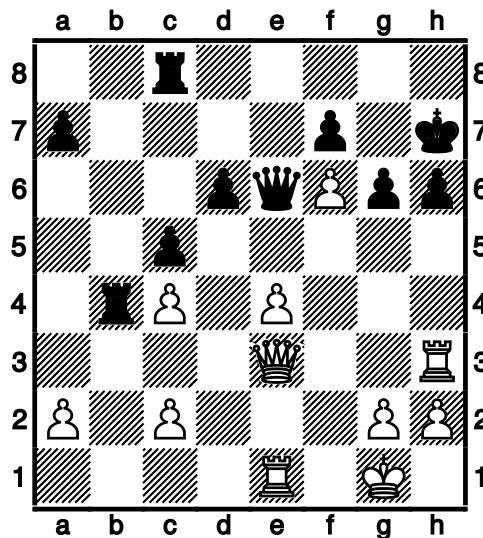
Pinneberger Winterturnier 2005



44.c5 dxe4 45.dxe4 d3 46.c6 dxe2 47.Dxe2 Ld4 48.Ld2 Df3+ 0-1

(7) Schmidt,Roland – Dörge,Olaf [C41]

1.e4 Sf6 2.Sc3 e5 3.Sf3 d6 4.d4 exd4 5.Sxd4 Le7 6.Le2 0-0 7.Le3 c5
8.Sf3 Sc6 9.0-0 Se5 10.Lf4 Sg6 11.Lg5 h6 12.Lxf6 Lxf6 13.Lc4 Se5
14.Sxe5 Lxe5 15.f4 Lxc3 16.bxc3 Kh8 17.f5 Tb8 18.f6 g6 19.Dd3 b5
20.Lxb5 Le6 21.c4 Tb6 22.La4 Ld7 23.Lxd7 Dxd7 24.Tad1 Kh7
25.De3 De6 26.Tf3 Tc8 27.Te1 Tb4 28.Th3



28...h5 29.Dg5 Dxh3 30.gxh3 Txc4 31.Dd5 1-0

Pinneberger Winterturnier 2005

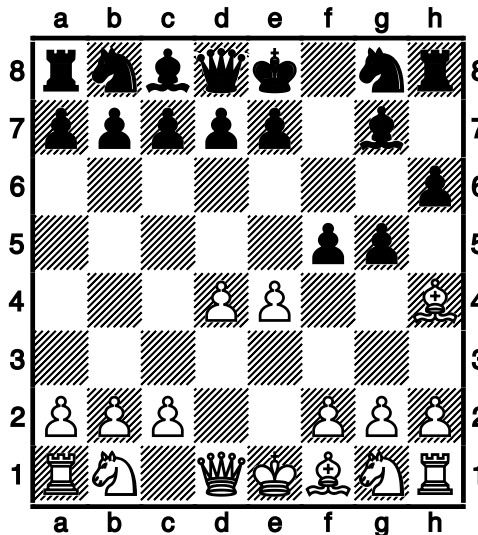
(8) Jarnuczak, Detlev – Kuhn, Gerd [A00]

Meisterklasse (2), 01.01.2005

0-1

(9) Kuhn, Gerd – van Riesen, Klaus [A80]

1.d4 f5 2.Lg5 h6 3.Lh4 g5 4.e4 Lg7



5.Lc4 e6 6.Lg3 f4 7.Dh5+ Kf8 8.e5 De8 9.De2 Sc6 10.c3 Sge7 11.Lxf4
gxf4 12.Sd2 a6 13.Sh3 b5 14.Ld3 Sd5 15.De4 Lb7 16.Sxf4 Sxf4
17.Dxf4+ Df7 18.Dg3 Se7 19.Se4 Sf5 20.Dh3 Lc6 21.g4 Se7 22.f4 Sd5
23.0-0 Ke8 24.Tf2 Kd8 25.f5 exf5 26.Txf5 De8 27.Taf1 Kc8 28.Tf7 Lf8
29.Dh5 Le7 30.h3 Kb7 31.b3 Ka7 32.c4 bxc4 33.bxc4 Sb4 34.Lb1 Tb8
35.Sc3 Lb7 36.Lg6 Lg5 37.T7f3 De7 38.a4 Lxf3 39.Txf3 Thf8 40.Le4
Txf3 41.Lxf3 Le3+ 0-1

(10) Dörge, Olaf – Jarnuczak, Detlev [A00]

Meisterklasse (3), 24.11.2005

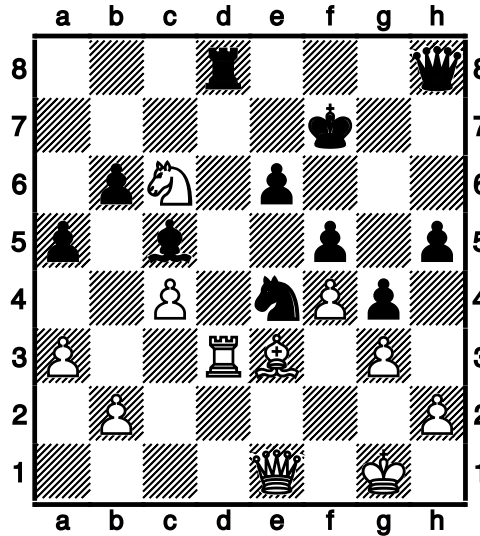
1/2-1/2

(11) Koester, Gerhard – Schmidt, Roland [B18]

1.e4 c6 2.d4 d5 3.Sc3 dxe4 4.Sxe4 Lf5 5.Sc5 b6 6.Sb3 e6 7.Ld3 Lxd3
8.Dxd3 Sf6 9.Sf3 Le7 10.0-0 0-0 11.Lf4 Sbd7 12.c4 Sh5 13.Le3 Tc8
14.Tad1 Dc7 15.g3 Db7 16.Sg5 Shf6 17.f4 h6 18.Sf3 Tcd8 19.Dc2 c5
20.Se5 cxd4 21.Lxd4 Se4 22.Sxd7 Txd7 23.Tfe1 f5 24.Le3 Tfd8
25.Txd7 Dxd7 26.a3 Kf7 27.Sd4 Lc5 28.Td1 a5 29.Td3 g5 30.De2 g4

Pinneberger Winterturnier 2005

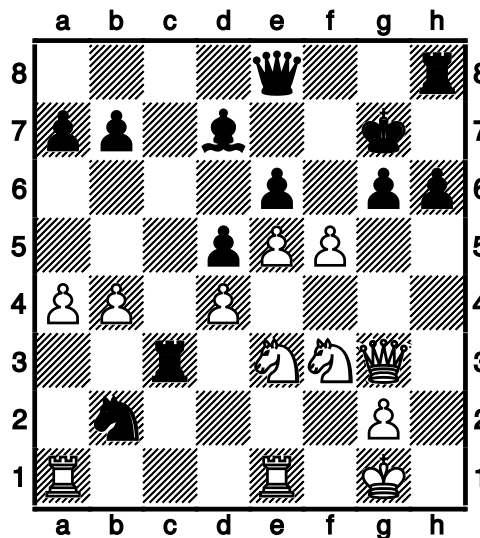
31.Dd1 h5 32.De1 Da4 33.Dc1 De8 34.De1 Dh8 35.Sc6



35...Txd3 36.Lxc5 Td2 37.Se5+ Kg7 38.Le3 Td6 39.b4 Dd8 40.Kg2
Td1 41.De2 Sc3 42.Db2 Da8+ 43.Kf2 Dh1 44.Sxg4 Df1# 0-1

(12) Brückner, Gerhard – Griwenka, Volker [C02]

1.e4 e6 2.d4 d5 3.e5 c5 4.c3 Db6 5.Sf3 Ld7 6.Sa3 cxd4 7.cxd4 Lb4+
8.Ld2 Sc6 9.Sc2 Lxd2+ 10.Dxd2 Sge7 11.Ld3 Sa5 12.0-0 Lb5 13.b4
Sc4 14.Dg5 Kf8 15.a4 Le8 16.Tfb1 Tc8 17.Df4 Sg6 18.Dg3 Dd8 19.h4
Tc7 20.h5 Se7 21.Sg5 Kg8 22.h6 Sg6 23.hxg7 Kxg7 24.f4 h6 25.Sf3
Ld7 26.Te1 Sb2 27.Lxg6 fxc6 28.f5 De8 29.Se3 Tc3



30.Sxd5 Txf3 31.gxf3 exd5 32.e6 Lc6 33.b5

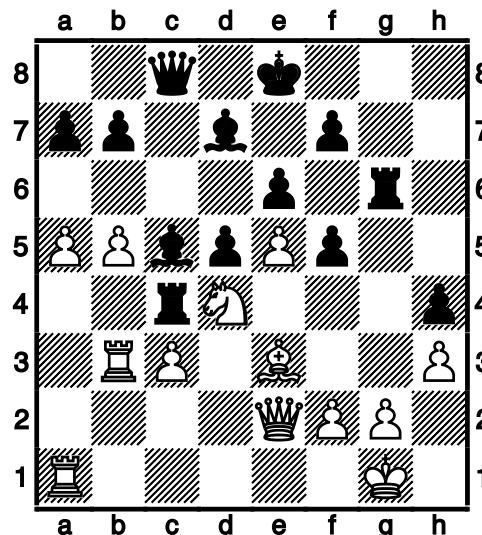
1-0

(13) van Riesen,Klaus – Griwenka,Volker [D04]

1.d4 Sf6 2.Sf3 d5 3.e3 Lg4 4.Sbd2 e6 5.h3 Lh5 6.g4 Lg6 7.Se5 Sbd7
8.h4 h6 9.Sxg6 fxg6 10.Ld3 Kf7 11.f4 Ld6 12.Df3 h5 13.g5 Sg4 14.c4
c6 15.e4 dxc4 16.Sxc4 Lb4+ 17.Ke2 Sb6 18.Le3 Tf8 19.Sxb6 Dxb6
20.e5 Sxe3 21.Dxe3 Tad8 22.Tad1 c5 23.a3 La5 24.b4 cxb4 25.axb4
Lxb4 26.Lb1 Dc6 27.Le4 Da6+ 28.Kf3 Tc8 29.Td3 Tc7 30.d5 exd5
31.Lxd5+ Ke7 32.Thd1 Tfc8 33.De4 Db6 34.Lb3 Tc3 35.Dd5 Dc6
36.Txc3 Dxd5+ 37.Lxd5 Txc3+ 38.Ke4 b6 39.f5 Th3 40.f6+ gxf6
41.gxf6+ Kf8 42.e6 Txb4+ 43.Kf3 g5 44.f7 Tf4+ 45.Kg2 Ke7 46.La2
Ld6 47.Tc1 Lc5 48.Tc2 h4 49.Td2 Td4 50.Te2 g4 51.Tf2 Kf8 52.Te2
Td3 53.Lc4 h3+ 0-1

(14) Schmidt,Roland – Brückner,Gerhard [C07]

1.e4 e6 2.d4 d5 3.Sd2 c5 4.c3 Sc6 5.Lb5 Ld7 6.Lxc6 Lxc6 7.e5 Se7
8.Se2 Sf5 9.0-0 Le7 10.Sf3 h6 11.Sg3 g6 12.dxc5 Lxc5 13.b4 Le7
14.Sd4 h5 15.Sgxf5 gxf5 16.Lf4 h4 17.Dd2 Tg8 18.a4 Tc8 19.Tfb1 Ld7
20.a5 Tc4 21.b5 Dc8 22.Tb3 Lc5 23.Le3 Tg4 24.h3 Tg6 25.De2



1/2-1/2

Pinneberger Winterturnier 2005

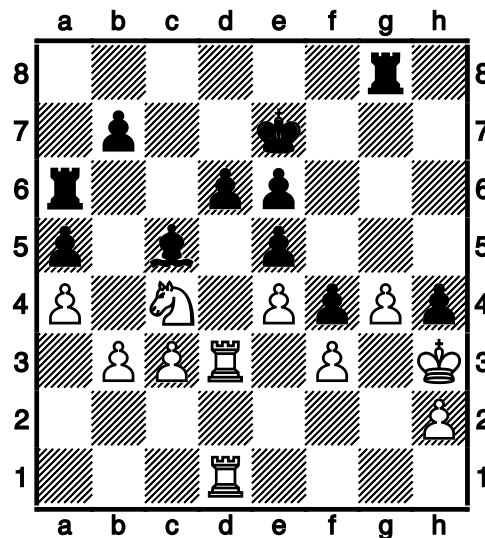
(15) Jarnuczak, Detlev – Koester, Gerhard [A00]

Meisterklasse (4), 20.10.2005

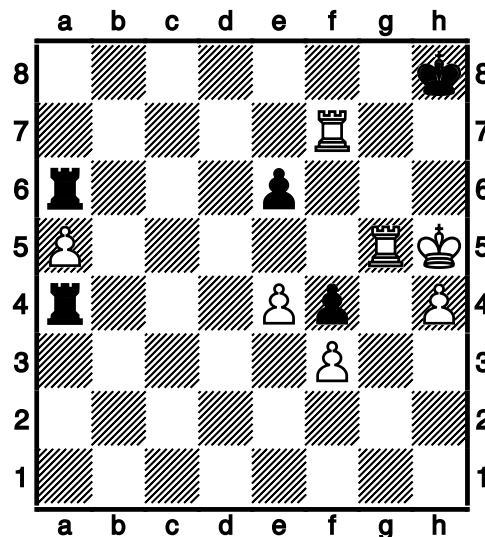
1/2-1/2

(16) Kuhn, Gerd – Dörge, Olaf [A45]

1.d4 Sf6 2.Lg5 e6 3.e4 Le7 4.Ld3 c5 5.dxc5 Da5+ 6.Dd2 Dxd2+
7.Sxd2 Lxc5 8.Sgf3 d6 9.0-0 Sc6 10.c3 h6 11.Lxf6 gxf6 12.Tad1 a5
13.a4 Ld7 14.Lb5 Se5 15.Lxd7+ Kxd7 16.Sxe5+ fxe5 17.Sc4 Ke7
18.Td3 Thc8 19.b3 Tg8 20.Tfd1 Ta6 21.Kf1 Tg4 22.f3 Tg8 23.g3 h5
24.Kg2 h4 25.g4 f5 26.Kh3 f4



27.T3d2 Td8 28.g5 Th8 29.Sxe5 Tg8 30.Kxh4 Le3 31.Td3 dxe5
32.Td7+ Kf8 33.Txb7 Ta8 34.g6 Txg6 35.Tdd7 Kg8 36.Kh5 Tg2 37.h4
Lc5 38.b4 axb4 39.cxb4 Lf8 40.a5 Tb2 41.Tb5 Txb4 42.Txe5 Ta6
43.Tg5+ Kh8 44.Td8 Ta4 45.Txf8+ Kh7 46.Tf7+ Kh8



Pinneberger Winterturnier 2005

47.Txf4 T4xa5 48.Txa5 Txa5+ 49.Kg6 Kg8 50.Kf6 Ta6 51.e5 Kh7
52.Td4 Kh6 53.Td8 Kh7 54.Kg5 Ta3 55.Td7+ Kg8 56.Kg6 Kf8 57.f4
Tf3 58.Tf7+ Kg8 59.Tf6 Tg3+ 60.Kh5 Tf3 61.Kg5 Tf1 62.Txe6 Kf7
63.Kf5 Th1 64.Tf6+ Kg7 65.Tg6+ Kh7 66.Tg4 Ta1 67.e6 Ta8 68.e7 Te8
1-0

(17) Dörge,Olaf – van Riesen,Klaus [B40]

1.e4 c5 2.Sf3 e6 3.d4 cxd4 4.Sxd4 Db6 5.Sb3 Dc7 6.Sc3 a6 7.g3 b5
8.a3 Lb7 9.Lg2 Sf6 10.Lf4 d6 11.Dd2 Sbd7 12.Td1 Se5 13.0-0 Sc4
14.Dc1 Le7 15.Sd2 Sxa3 16.e5 Lxg2 17.exf6 Lxf1 18.Sxf1 gxf6 19.Se4
Sc4 20.Se3 Se5 21.b3 Dc6 22.Sd2 h5 23.h4 Sg6 24.Sg2 Sxf4 25.Sxf4
Tc8 26.c4 bxc4 27.bxc4 d5 28.Dc2 dxc4 29.Se4 Td8 30.Te1 e5 31.Sg2
Td4 32.Sc3 Dd7 33.Te2 Kf8 34.Se3 Lb4 35.Sg2 Tg8 36.Se3 Dc6
37.Sf5 Lxc3 38.Dxc3 Td1+ 39.Te1 Txe1+ 40.Dxe1 Db6 41.De4 Dd8
42.Dxc4 Tg6 43.Dxa6 Kg8 44.De2 $\frac{1}{2}$ - $\frac{1}{2}$

(18) Koester,Gerhard – Kuhn,Gerd [B01]

1.e4 d5 2.exd5 Sf6 3.Lb5+ Sbd7 4.Sc3 g6 5.d4 Lg7 6.Sf3 0-0 7.0-0
Sb6 8.h3 Sbx5 9.Sxd5 Sxd5 10.Te1 Dd6 11.c4 a6 12.La4 b5 13.cxd5
bxa4 14.Dxa4 Dxd5 15.Txe7 Lxh3 16.Lf4 Lg4 17.Sh2 Le6 18.Sf3 c5
19.dxc5 Dxc5 20.Tc7 Db6 21.Tb1 Lf5 22.Te1 Dxb2 23.Le5 Lxe5
24.Txe5 Tad8 25.Tee7 Db1+ 26.Te1 Dd3 27.Dh4 h5 28.Dg5 Kg7
29.Tce7 Dd6 30.Sh4 Df6 31.Sxf5+ Dxf5 32.De3 Td6 33.Da3 Tf6 34.f3
Tc8 35.T7e5 Dc2 36.Te8 Dc5+ 37.Dxc5 Txc5 38.T1e2 Tc1+ 39.Kf2
Tfc6 40.Td8 T1c2 41.Tdd2 Txd2 42.Txd2 Kf6 43.Kg3 Ke5 44.Te2+
Kd4 45.Te7 f6 46.Kf4 Kd5 47.Td7+ Ke6 48.Td2 Tc4+ 49.Ke3 Ke5
50.g3 g5 51.Kf2 h4 52.Kg2 hxg3 53.Kxg3 a5 54.Te2+ Kf5 55.Te3 Ta4
56.a3 Tc4 57.Tb3 a4
0-1

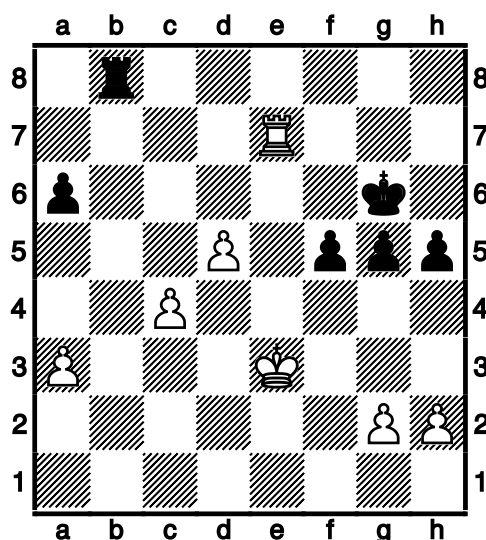
(19) Brückner,Gerhard – Jarnuczak,Detlev [A00]

Meisterklasse (5), 10.11.2005

1-0

(20) Griwenka,Volker – Schmidt,Roland [B13]

1.e4 c6 2.d4 d5 3.exd5 cxd5 4.Ld3 Sf6 5.c3 e6 6.Sf3 Le7 7.0-0 Sbd7
8.Lf4 0-0 9.Sbd2 a6 10.Se5 Sb6 11.De2 Ld7 12.Lg5 Sc8 13.f4 Sd6
14.Tae1 b5 15.f5 Sfe4 16.Lxe7 Dxe7 17.Sxe4 dxe4 18.Lxe4 Sxe4
19.Sxd7 Dxd7 20.Dxe4 exf5 21.Txf5 Tad8 22.a3 g6 23.Te5 Dd6
24.Dh4 Kg7 25.De7 Dc6 26.Tc5 Db6 27.De5+ Kg8 28.Dc7 Dxc7
29.Txc7 Td6 30.Tee7 Kg7 31.Kf2 h5 32.Ke3 g5 33.b3 Kg6 34.c4 bxc4
35.bxc4 Tb6 36.Tb7 Tb8 37.Txb8 Txb8 38.d5 f5



39.Te6+ Kf7 40.Txa6 f4+ 41.Ke4 Tb2 42.Kf5 Txc2 43.Ta7+ Ke8 44.Ke6
Te2+ 45.Kf6 f3 46.Ta8+ Kd7 47.Kxg5 Ke7

1/2-1/2

(21) van Riesen,Klaus – Schmidt,Roland [B10]

1.e4 c6 2.c4 d5 3.exd5 cxd5 4.cxd5 Dxd5 5.Sc3 Da5 6.d4 e6 7.Sf3
Sf6 8.Ld3 Le7 9.0-0 0-0 10.Le3 Sbd7 11.a3 a6 12.b4 Dc7 13.Tc1 Db8
14.Sa4 Td8 15.Dd2 b6 16.Tfd1 Lb7 17.De2 Sd5 18.Lb1 Da7 19.Se5
S7f6 20.g4 h6 21.h4 Sxe3 22.Dxe3 Sd5 23.Dd3 Lf6 24.Dh7+ Kf8 25.g5
hxg5 26.hxg5 Lxe5 27.dxe5 Se7 28.Dh8+ Sg8 29.Lh7 Ke7 30.Tc7+

1-0

Pinneberger Winterturnier 2005

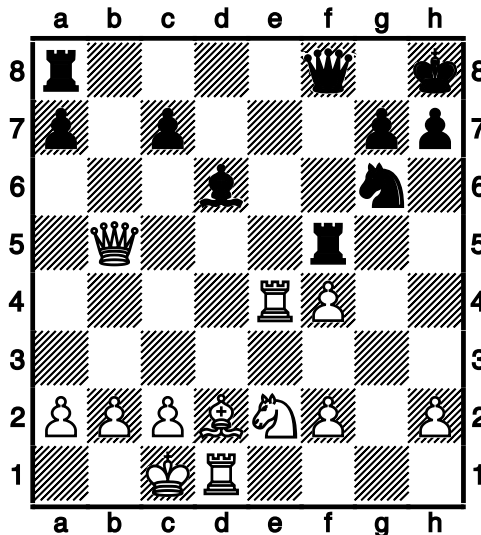
(22) Jarnuczak, Detlev – Griwenka, Volker [A00]

Meisterklasse (6), 27.10.2005 1-0

(23) Kuhn, Gerd – Brückner, Gerhard [A40]

Meisterklasse (6), 01.12.2005

1.d4 e5 2.dxe5 d6 3.Sf3 d5 4.e4 Le6 5.exd5 Lxd5 6.Sc3 Lb4 7.Ld2
Lc6 8.Lc4 Se7 9.De2 0-0 10.0-0-0 Sg6 11.The1 Sd7 12.e6 Lxf3
13.exf7+ Kh8 14.gxf3 Sde5 15.f4 Sxf7 16.Lxf7 Txf7 17.Dc4 Df8 18.Te4
Ld6 19.Se2 b5 20.Dxb5 Tf5



21.Da4 Tb8 22.Sd4 Th5 23.Tde1 Se7 24.Dd7 Txh2 25.Txe7 Lxe7
26.Sc6 Ta8 27.Sxe7 Td8 28.De6 Txf2 29.Sg6+
1-0

(24) Dörge, Olaf – Koester, Gerhard [C55]

Meisterklasse (6), 27.10.2005

1.e4 e5 2.Sf3 Sc6 3.Lc4 Sf6 4.Sc3 Le7 5.d4 d6 6.dxe5 Sxe5 7.Sxe5
dxe5 8.0-0 0-0 9.De2 c6 10.a4 a5 11.h3 Lc5 12.Le3 De7 13.Tfd1 b6
14.Lxc5 Dxc5 15.Td2 Ta7 16.Tad1 Td7 17.Txd7 Lxd7 18.Dd3 h6
19.Lb3 Te8 20.Dd6 Dxd6 21.Txd6 Kf8 22.f3 Ke7 23.Td2 Le6 24.Lxe6
Kxe6 25.Kf2

1/2-1/2

Pinneberger Winterturnier 2005

(25) Koester, Gerhard – van Riesen, Klaus [A00]

Meisterklasse (7), 06.01.2005 1-0

(26) Brückner, Gerhard – Dörge, Olaf [A00]

Meisterklasse (7), 06.01.2005 0-1

(27) Griwenka, Volker – Kuhn, Gerd [A00]

Meisterklasse (7), 06.01.2005 1-0

(28) Schmidt, Roland – Jarnuczak, Detlev [A00]

Meisterklasse (7), 01.12.2005 0-1

Hauptturnierklasse

(29) Lemke, Detlef – Hadlich, Winfried [B07]

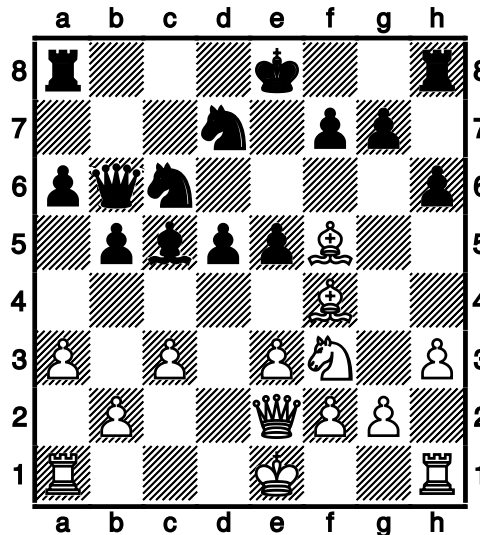
1.e4 c6 2.d4 Sf6 3.Sc3 d6 4.Lg5 Sbd7 5.f4 Db6 6.Dd2 e5 7.Sf3 exf4
8.Sa4 Dc7 9.Dxf4 Da5+ 10.Sc3 h6 11.Lxf6 Sxf6 12.0-0-0 Sh5 13.De3
Lg4 14.Lc4 Le7 15.h3 Lxf3 16.Dxf3 Dg5+ 17.Kb1 0-0 18.e5 g6 19.Se4
Df4 20.Dxf4 Sxf4 21.exd6 Ld8 22.g3 Sd5 23.Lxd5 cxd5 24.Sc3 Tc8
25.Sxd5 Tc6 26.Se7+ Lxe7 27.dxe7 Te8 28.d5 Td6 29.The1 f6 30.c4
b6 31.Td3 Kf7 32.Tde3 Td7 33.Kc2 Tdxe7 34.Txe7+ Txe7 35.Txe7+
Kxe7 36.Kd3 Kd6 37.Kd4 f5 38.b4 g5 39.c5+ Kd7 40.Ke5 bxc5
41.bxc5 h5 42.Kxf5 1-0

(30) Iwanow, Thomas – Rakhmanov, Vsevolod [E90]

1.d4 Sf6 2.Sf3 g6 3.c4 d6 4.Sc3 Lg7 5.e4 0-0 6.h3 Te8 7.Le3 b6
8.Ld3 Lb7 9.d5 e5 10.0-0 Kh8 11.Dd2 Sg8 12.Sg5 De7 13.Tae1 h6
14.Sf3 Lc8 15.Kh2 g5 16.g4 f6 17.Tg1 Dd7 18.Tg3 Se7 19.Lc2 Sg6
20.La4 c6 21.Td1 Lf8 22.dxc6 Sxc6 23.Sd5 Te6 24.Sb4 Lb7 25.Sxc6
Lxc6 26.Lxc6 Dxc6 27.Dd5 Dxd5 28.cxd5 Tee8 29.Tc1 Tec8 30.Tgg1
Kg8 31.Txc8 Txc8 32.Tc1 Txc1 33.Lxc1 Kf7 34.Se1 Ke8 35.Sc2 Kd7
36.Sb4 a5 37.Sc6 Kc7 38.Sa7 Kd7 39.Le3 Kc7 40.a4 Kb7 41.Sc6 Kc7
42.Sa7 Kb7 43.Sb5 Le7 44.b3 Lf8 45.Lc1 Kc8 46.Kg3 Sh8 47.Kf3 Sf7
1/2-1/2

(31) Dangelowski, Peter – Lorenz, Jens [A40]

1.d4 e6 2.Lf4 c5 3.c3 d5 4.e3 Sc6 5.Ld3 Sf6 6.Sd2 h6 7.Sgf3 Le7 8.h3
Ld7 9.De2 a6 10.a3 b5 11.Se5 Db6 12.dxc5 Lxc5 13.Sxd7 Sxd7
14.Sf3 e5 15.Lf5



15...exf4 16.exf4+ Kd8 17.0-0-0 Te8 18.Dd3 Se7 19.Lxd7 Kxd7
20.The1 Ld6 21.Se5+ Kc7 22.Df3 f6 23.Sg4 Tad8 24.Se3 Lc5
25.Sxd5+ Sxd5 26.Txe8 Txe8 27.Dxd5 Da7 28.Dd2 Ld6 29.Dd5 Dc5
30.Dd2 g5 31.g3 gxf4 32.gxf4 Te4 33.Kc2 Txf4 34.De3 Df5+

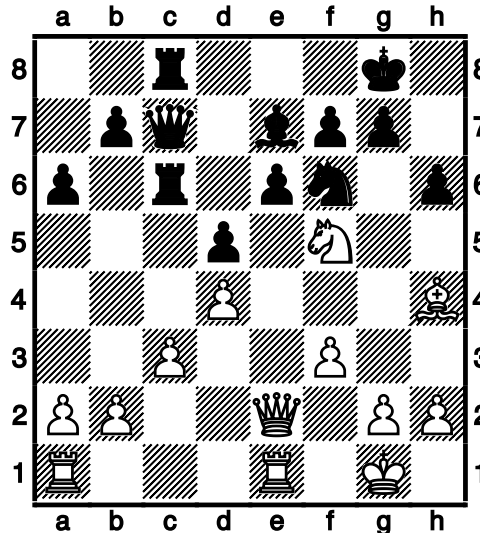
0-1

(32) Hochreiner, Jürgen – Grothkopp, Dietrich [B13]

Hauptturnierklasse (1), 10.11.2005

1.e4 c6 2.d4 d5 3.exd5 cxd5 4.Sc3 Sf6 5.Sf3 Lg4 6.Le2 e6 7.Se5 Lxe2
8.Dxe2 a6 9.Lg5 Le7 10.0-0 Sbd7 11.Sxd7 Dxd7 12.Tfe1 0-0 13.Sd1
Tac8 14.Se3 h6 15.Lh4 Tc6 16.c3 Tfc8 17.f3 Dc7 18.Sf5

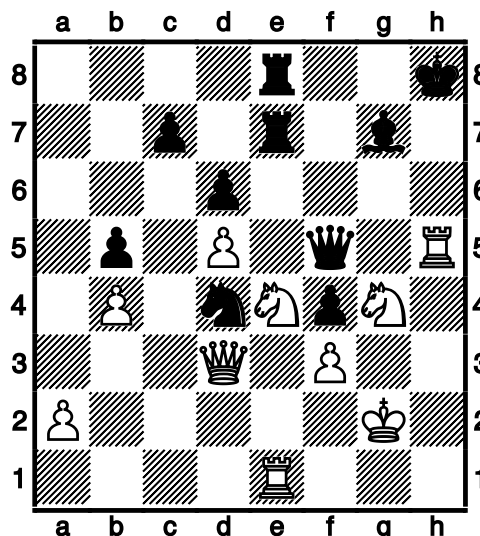
Pinneberger Winterturnier 2005



18...Kf8 19.Sxe7 Dxe7 20.De5 Dd8 21.g4 Sd7 22.Dh5 Sf6 23.Lxf6
 Dxf6 24.Te5 Dg6 25.Dxg6 fxc6 26.Tf1 Kf7 27.h4 Te8 28.Kg2 Tc7
 29.Kg3 b5 30.a3 a5 31.f4 Tb7 32.f5 gxf5 33.gxf5 Tbe7 34.h5 b4
 35.cxb4 axb4 36.a4 b3 37.Kf4 Td8 38.Txe6 Ta7 39.Ta1 Tda8 40.Ke5
 Txa4 41.Txa4 Txa4 42.Tb6 Ta1 43.Tb7+ 1-0

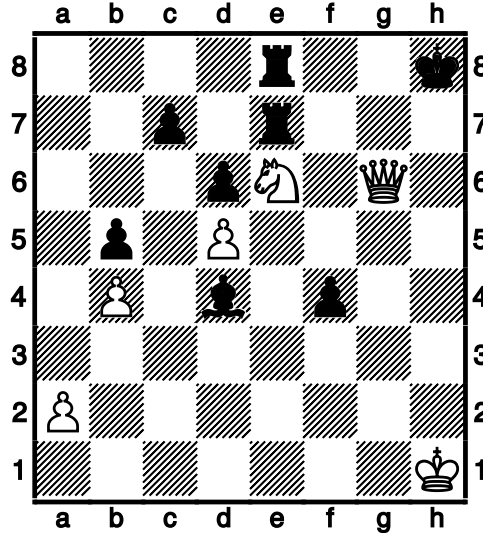
(33) Hadlich, Winfried – Grothkopp, Dietrich [E73]

1.c4 Sf6 2.Sc3 g6 3.e4 d6 4.d4 Lg7 5.Le2 0-0 6.Lg5 Sbd7 7.Sf3 Te8
 8.0-0 e5 9.d5 h6 10.Le3 Sg4 11.Ld2 Sc5 12.b4 Sd7 13.h3 Sgf6 14.Sh2
 a6 15.Dc1 Kh7 16.Le3 De7 17.Tb1 Sg8 18.Dc2 h5 19.g4 hxg4 20.Sxg4
 Dh4 21.Kg2 Sdf6 22.Th1 Sh5 23.Dd2 f5 24.Lg5 Sf4+ 25.Lxf4 exf4
 26.exf5 Lxf5 27.Ld3 Sh6 28.Lxf5 Sxf5 29.Tbe1 Dg5 30.Kf1 Sd4
 31.Se4 Df5 32.Dd3 Kh8 33.f3 Te7 34.h4 Tae8 35.Kg2 b5 36.cxb5 axb5
 37.h5 gxh5 38.Txh5+



Pinneberger Winterturnier 2005

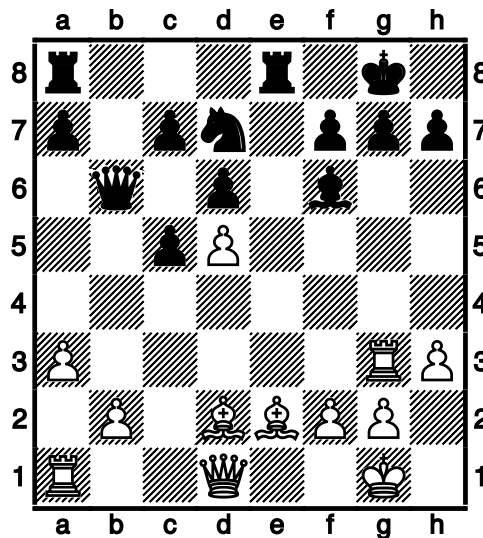
38...Dxh5 39.Th1 Dxh1+ 40.Kxh1 Sxf3 41.Sgf2 Sd4 42.Sg5 Le5
43.Dg6 Sf3 44.Sfh3 Sxg5 45.Sxg5 Ld4 46.Se6



0-1

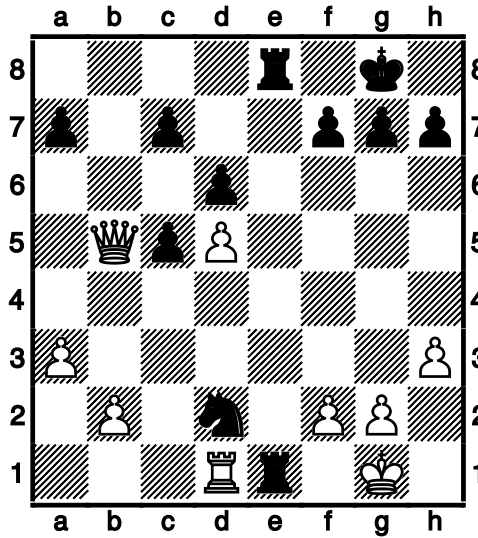
(34) Lorenz, Jens – Hochreiner, Jürgen [C66]

1.e4 e5 2.Sf3 Sc6 3.Lb5 Sf6 4.0-0 d6 5.d4 exd4 6.Sxd4 Ld7 7.Sxc6
bxc6 8.La4 Le7 9.Te1 0-0 10.c4 Te8 11.Sc3 Db8 12.Te3 Db6 13.h3
Dc5 14.Lc2 Dxc4 15.Ld3 Dc5 16.Tf3 Le6 17.Le3 Dh5 18.Le2 Da5
19.Tg3 Sd7 20.a3 c5 21.Sd5 Lxd5 22.exd5 Lf6 23.Ld2 Db6



Pinneberger Winterturnier 2005

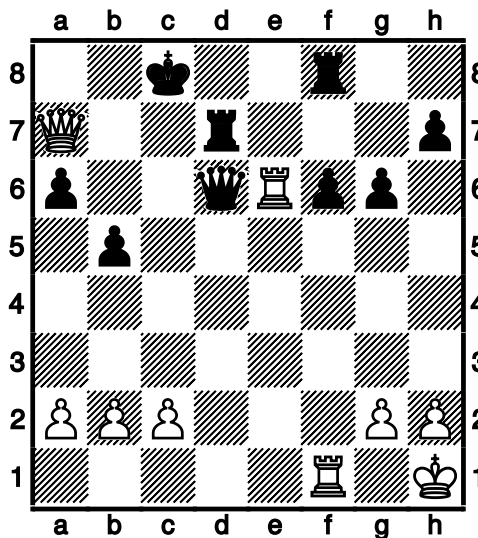
24.Tb3 Dxb3 25.Dxb3 Txe2 26.Dd3 Tae8 27.Lc3 Lxc3 28.Dxc3 Sf6
29.Db3 Se4 30.Db5 Sd2 31.Td1 Te1+



32.Txe1 Txe1+ 33.Kh2 Sf1+ $\frac{1}{2}$ - $\frac{1}{2}$

(35) Rakhmanov, Vsevolod – Dangelowski, Peter [B84]

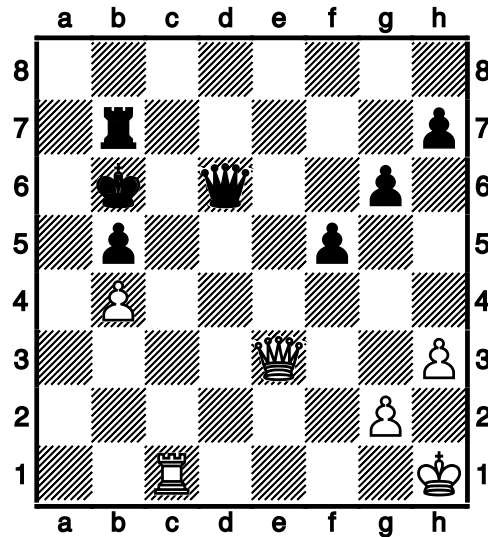
1.e4 c5 2.Sf3 d6 3.d4 cxd4 4.Sxd4 Sf6 5.Sc3 a6 6.Le2 e6 7.Le3 Le7
8.0-0 b5 9.f4 Lb7 10.Lf3 Dc7 11.e5 dxe5 12.Lxb7 Dxb7 13.fxe5 Sfd7
14.Dh5 g6 15.Dh6 Dc7 16.Dg7 Tf8 17.Sf3 Sc6 18.Lh6 0-0-0 19.Kh1
Scxe5 20.Sxe5 Sxe5 21.Lf4 Ld6 22.Se4 f6 23.Sxd6+ Dxd6 24.Lxe5
Dxe5 25.Tae1 Dd6 26.Da7 Td7 27.Txe6



27...Dxe6 28.Da8+ Kc7 29.Dxf8 f5 30.Dc5+ Kb7 31.b3 De2 32.Dg1

Pinneberger Winterturnier 2005

Dxc2 33.Tc1 Dd2 34.h3 Dd6 35.De3 Dd5 36.a4 Dd6 37.axb5 axb5
38.De1 Kb6 39.b4 Tb7 40.De3+



1-0

(36) Lemke,Detlef – Iwanow,Thomas [A00]

Hauptturnierklasse (2), 01.01.2005 +:-

(37) Iwanow,Thomas – Hadlich,Winfried [A46]

1.d4 Sf6 2.Sf3 e6 3.Lg5 Le7 4.c4 Se4 5.Lxe7 Dxe7 6.Dc2 d5 7.e3 c6
8.Ld3 f5 9.Se5 Sd7 10.g3 Sxe5 11.dxe5 0-0 12.cxd5 cxd5 13.Sd2 Ld7
14.0-0 Tac8 15.Dd1 Db4 16.Sb3 La4 17.De2 Lxb3 18.axb3 a6 19.Lxe4
Dxe4 20.f4 Tc2 21.Df3 Dxf3 22.Txf3 Txb2 23.Tc1 Txb3 24.Tc7 d4
25.Tf1 d3 26.Kf2 Td8 27.Te7 Tb2+ 28.Kf3 d2 29.Td1 Tb6 30.h3 Kf8
31.Tc7 a5 32.g4 fxg4+ 33.hxg4 a4 34.f5 a3 35.fxe6 Txe6 36.Txb7 Txe5
37.Ke2 Ta5 38.Tf1+ Kg8 39.Td1 a2

0-1

(38) Dangelowski,Peter – Lemke,Detlef [A00]

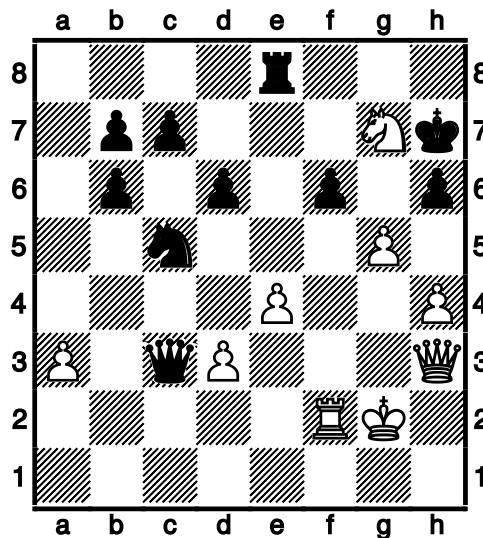
Hauptturnierklasse (3), 02.01.2005

1-0

Pinneberger Winterturnier 2005

(39) Hochreiner, Jürgen – Rakhmanov, Vsevolod [C26]

1.e4 e5 2.Lc4 Sf6 3.Sc3 Lc5 4.Sf3 d6 5.0-0 Lg4 6.h3 Lh5 7.Le2 Sc6
8.d3 h6 9.Sa4 Lb6 10.Sxb6 axb6 11.Sh2 Lxe2 12.Dxe2 Sd4 13.Dd1
Se6 14.f4 Sxf4 15.Lxf4 exf4 16.Txf4 0-0 17.a3 Ta5 18.De2 De7 19.Taf1
Sh7 20.Df2 f6 21.Sg4 Df7 22.Se3 Tg5 23.Sf5 Te8 24.h4 Tg6 25.Df3 Sf8
26.Tg4 Txxg4 27.Dxxg4 Dg6 28.Dh3 Se6 29.Tf3 Kh7 30.Kh1 Df7 31.c3
Sc5 32.g4 Da2 33.g5 Db1+ 34.Kg2 Dxb2+ 35.Tf2 Dxc3 36.Sxxg7



36...Kxxg7 37.Df5 hxxg5 38.h5 Kf7 39.Dg6+ Ke7 40.h6 Sxxd3 41.Dg7+
Ke6 42.Dh7 Te7 43.Df5+ Kf7 44.Dh7+ Ke8 45.Dg6+ Kd8 46.h7 Txxh7
47.Dg8+ Kd7 48.Dxxh7+ Kc6 49.Df5 b5 50.Dxxf6 Dxxf6 51.Txxf6 Se5
52.Tf2 Kc5 53.Tc2+ Sc4 54.Kf3 Kd4 55.Tc1 c5 56.Td1+ Ke5 57.Td5+
Ke6 58.Txxg5 Sxxa3 59.Ke3 Sc4+ 60.Kd3 Se5+ 61.Kc3 b4+ 62.Kb3 b5
63.Th5 Sc6 64.Tg5 Sd4+ 65.Kb2 c4 66.Td5 c3+ 67.Kb1 Sb3 68.Txxb5
c2+ 69.Kxxc2 Sd4+ 70.Kd3 Sxxb5 71.Kc4 Sc7 72.Kxxb4 Ke5
0-1

(40) Grothkopp, Dietrich – Lorenz, Jens [D80]

1.d4 Sf6 2.c4 g6 3.Sc3 d5 4.e3 Lg7 5.Ld3 0-0 6.Sge2 Te8 7.cxd5
Sxxd5 8.0-0 c6 9.Sxxd5 cxd5 10.Ld2 Sc6 11.Lc3 a6 12.Tc1 Ld7 13.b3
b5 14.Dd2 Db8 15.Lb2 e6 16.Lb1 Lf8 17.h4 Lb4 18.Dd3 Ld6 19.g3 Se7
20.h5 b4 21.hxxg6 hxxg6 22.Kg2 Lb5 23.Dd2 Kg7 24.Th1 Th8 25.Txxh8
Dxxh8 26.Th1 Dg8 27.e4 Kf8 28.e5 Lc7 29.Lc1 Ke8 30.Ld3 Lxxd3

Pinneberger Winterturnier 2005

31.Dxd3 Kd7 32.Lg5 Sc6 33.Lf6 Db8 34.Th7 Sd8 35.Lxd8 Lxd8
36.Txf7+ Le7 37.Dxg6 1-0

(41) Hadlich, Winfried – Lorenz, Jens [A10]

1.c4 g6 2.Sc3 Lg7 3.e4 d6 4.Le2 c5 5.d3 Sc6 6.Sf3 a6 7.0-0 Sf6
8.Te1 Lg4 9.Le3 0-0 10.Dd2 Tb8 11.Sh4 Lxe2 12.Sxe2 Sg4 13.Lf4 e5
14.Lg3 Lh6 15.Dc2 Sf6 16.h3 Sh5 17.Sf3 Sxg3 18.Sxg3 Dd7 19.Se2 f5
20.Sh2 Tf7 21.Sc3 b5 22.Sd5 Sd4 23.Dd1 bxc4 24.dxc4 Txb2 25.Tb1
Td2 26.Tb8+ Kg7 27.Db1 Sc6 28.Tb6 Td4 29.exf5 gxf5 30.Db3 Kh8
31.Tb1 Sb4 32.Sxb4 cxb4 33.Txb4 Kg7 34.Df3 De6 35.Dg3+ Dg6
36.Db3 e4 37.Dc3 Df6 38.Tb7 Td1+ 39.Txd1 Dxc3 40.Tb3 De5
0-1

(42) Rakhmanov, Vsevolod – Grothkopp, Dietrich [B18]

1.e4 c6 2.d4 d5 3.Sc3 dxe4 4.Sxe4 Lf5 5.Sg3 Lg6 6.Sf3 Sd7 7.Lc4 e6
8.0-0 Sgf6 9.De2 Le7 10.Lg5 h6 11.Lh4 Lh7 12.Se5 Sxe5 13.dxe5 Sd5
14.Lxe7 Dxe7 15.Se4 Lxe4 16.Dxe4 0-0-0 17.a3 f5 18.exf6 gxf6
19.Tfe1 e5 20.b4 Thg8 21.Tad1 Dd7 22.Lf1 Dg4 23.Dxg4+

1/2-1/2

(43) Lemke, Detlef – Hochreiner, Jürgen [C41]

1.e4 e5 2.Lc4 Le7 3.Sf3 d6 4.d4 Sc6 5.d5 Sb8 6.Le3 Sf6 7.Sc3 Sg4
8.De2 f5 9.h3 Sxe3 10.fxe3 Lh4+ 11.Kd2 0-0 12.exf5 Lxf5 13.g4 Lg6
14.Taf1 Sd7 15.Kc1 Sc5 16.Thg1 Se4 17.Sxe4 Lxe4 18.Ld3 Lxf3
19.Txf3 De7 20.Lf5 g6 21.Le6+ Kg7 22.Tgf1 Txf3 23.Txf3 Tf8 24.Df1
Txf3 25.Dxf3 Df6 26.Dxf6+ Kxf6

1/2-1/2

(44) Iwanow, Thomas – Dangelowski, Peter [A00]

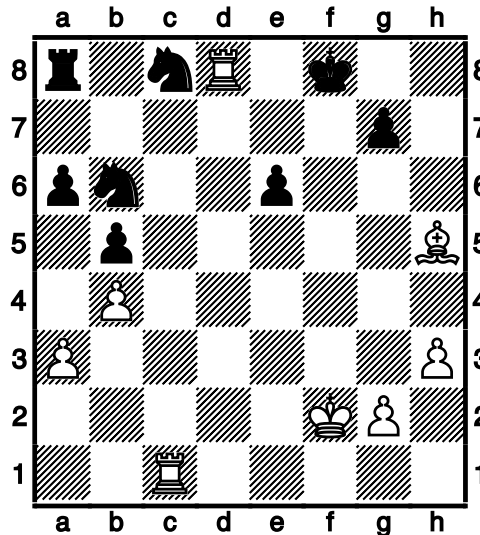
Hauptturnierklasse (4), 03.01.2005

1/2-1/2

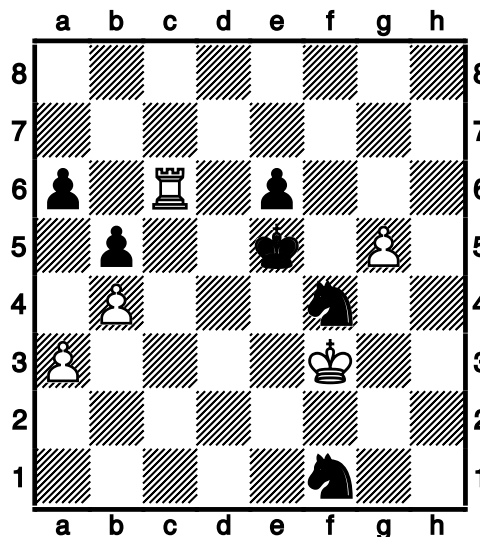
Pinneberger Winterturnier 2005

(45) Dangelowski, Peter – Hadlich, Winfried [A43]

1.d4 c5 2.c3 cxd4 3.cxd4 Sf6 4.Sc3 e6 5.a3 a6 6.e4 d6 7.Sf3 Sc6
 8.Ld3 Le7 9.0-0 Ld7 10.b4 b5 11.h3 h6 12.Lf4 Sh7 13.d5 Sa7 14.e5
 dxe5 15.Sxe5 Sf6 16.Df3 0-0 17.Tfd1 De8 18.Tac1 Sc8 19.Sxd7 Sxd7
 20.dxe6 Sdb6 21.Dg3 fxe6 22.Lxh6 Lf6 23.Le3 Dh5 24.Lc5 Lxc3
 25.Lg6 Le5 26.Lxh5 Lxg3 27.Lxf8 Lxf2+ 28.Kxf2 Kxf8 29.Td8+



29...Ke7 30.Te8+ Kf6 31.Lg4 Se7 32.Txa8 Sxa8 33.Td1 Sd5 34.Kg3
 Sab6 35.Tf1+ Ke7 36.Te1 Sc7 37.Le2 Sbd5 38.Tc1 Kd6 39.Kf3 Ke5
 40.Tc6 Kd4 41.g4 g5 42.h4 gxh4 43.g5 Ke5 44.Kg4 h3 45.Kxh3 Sf4+
 46.Kg4 Scd5 47.Lf1 Se3+ 48.Kf3 Sxf1



49.Tc2 Sd5 50.Te2+ Kf5 51.g6 Kf6 52.g7 Kxg7 53.Txe6 Sd2+ 54.Ke2
Sf4+ 0-1

(46) Hochreiner, Jürgen – Iwanow, Thomas [A00]

Hauptturnierklasse (5), 04.01.2005

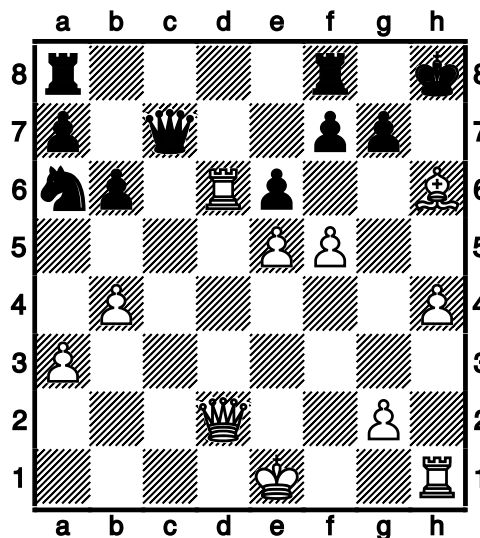
1/2-1/2

(47) Grothkopp, Dietrich – Lemke, Detlef [D55]

1.d4 d5 2.c4 e6 3.Sc3 Sf6 4.Lg5 Le7 5.Sf3 0-0 6.e3 b6 7.cxd5 exd5
8.Ld3 Te8 9.0-0 La6 10.Se5 Lxd3 11.Dxd3 a6 12.Tac1 Dd6 13.Se2 c5
14.b3 Sbd7 15.Sxd7 Sxd7 16.Lxe7 Txe7 17.Tfd1 Sf6 18.Sf4 Td8
19.Tc2 g5 20.Se2 Sg4 21.Sg3 Tde8 22.Df5 Te4 23.h3 Sxe3 24.Dxg5+
Kh8 25.Sxe4 dxe4 26.fxe3 f6 27.Df4 Dd5 28.Dxf6+ Kg8 29.Tf2 Dh5
30.Tfd2 1-0

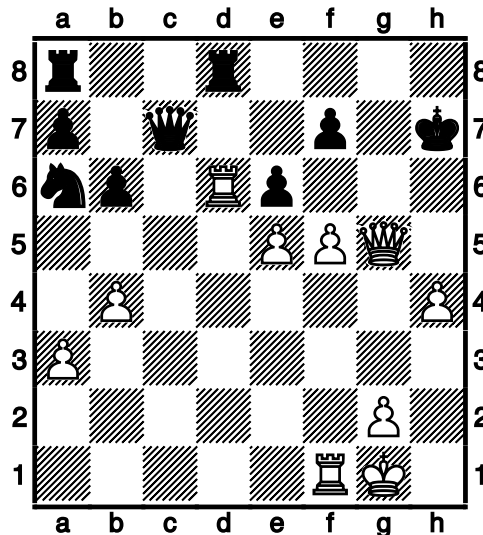
(48) Lorenz, Jens – Rakhmanov, Vsevolod [C11]

1.e4 e6 2.d4 d5 3.Sd2 dxe4 4.Sxe4 Sd7 5.Sf3 Sgf6 6.Lg5 Le7 7.Sxf6+
Lxf6 8.h4 c6 9.Dd2 Db6 10.c3 c5 11.Td1 cxd4 12.cxd4 h6 13.Le3 Le7
14.a3 Db3 15.Ld3 Lf6 16.Se5 Lxe5 17.dxe5 Dd5 18.f4 0-0 19.b4 b6
20.De2 Kh8 21.Lb5 Db7 22.Td6 Sb8 23.Dd2 Dc7 24.f5 La6 25.Lxa6
Sxa6 26.Lxh6!!



26...Tfd8 27.Lxg7+ Kg8 28.0-0 Kxg7 29.Dg5+ Kh7

Pinneberger Winterturnier 2005



30.f6 1-0

(49) Hadlich, Winfried – Rakhmanov, Vsevolod [A18]

1.c4 Sf6 2.Sc3 e6 3.e4 d6 4.Sge2 e5 5.Sg3 g6 6.d3 b6 7.Le2 c5 8.0-0
Le6 9.f4 Lg7 10.f5 Lc8 11.fxg6 fxg6 12.Lg5 0-0 13.Dd2 Le6 14.Tf2
Sbd7 15.Sf1 Dc7 16.Se3 h6 17.Lh4 g5 18.Lg3 a6 19.Taf1 Tae8 20.Sf5
Lxf5 21.Txf5 Dd8 22.Le1 Sh7 23.g4 Txf5 24.gxf5 Shf6 25.Dd1 Tf8
26.Da4 Sb8 27.Db3 Sc6 28.Lf2 Sd4 29.Lxd4 exd4 30.Sd5 Sxd5
31.cxd5 Le5 32.Dd1 Lf4 33.Lh5 Df6 34.Dg4 De5 35.Dh3 Dg7 36.Kh1
Tf6 37.Dg4 Le5 38.Tf3 Tf8 39.Th3 Dh8 40.Dd1 b5 41.Lg6 a5 42.Dh5
Kg7 43.Tf3 Tf6 44.b3 Df8 45.Kg2 Dh8 46.h4 Lf4 47.hxg5 Lxg5 48.Le8
b4 49.Ld7 Df8 50.Le6 Kh7 51.Tg3 Dg7 52.Kf3 Tf8 53.Tg4 Df6 54.Dh2
Td8 55.Tg2 Kg7 56.Dh1 De5 57.Tg4 Df6 58.Dh5 Tf8 59.Dh2 Td8
60.Dh5 Tf8 $\frac{1}{2}$ - $\frac{1}{2}$

(50) Lemke, Detlef – Lorenz, Jens [C02]

1.e4 e6 2.d4 d5 3.e5 c5 4.c3 Sc6 5.Le3 cxd4 6.cxd4 Db6 7.Dd2 Sge7
8.Sc3 Sf5 9.Sf3 Sxe3 10.fxe3 Ld7 11.Tc1 Tc8 12.Ld3 g6 13.0-0 Lh6
14.Sb5 0-0 15.Sd6 Tb8 16.Df2 Dd8 17.g4 f6 18.exf6 Dxf6 19.De2 De7
20.Sb5 a6 21.Sc3 b5 22.h4 b4 23.Sd1 e5 24.Lxa6 e4 25.Sg5 Lxg5
26.hxg5 Dxg5 27.Txf8+ Txf8 28.Lb7 Tf3 29.Sf2 [(=)]
29...Sxd4 30.Lxd5+ Dxd5 31.exd4 e3 32.Sh1 Lxg4 0-1

(51) Iwanow,Thomas – Grothkopp,Dietrich [E90]

1.d4 Sf6 2.Sf3 g6 3.c4 Lg7 4.Sc3 d6 5.e4 Sbd7 6.Le3 0-0 7.h3 Te8
8.Ld3 e5 9.d5 a6 10.0-0 h6 11.Tb1 De7 12.Dc1 Kh7 13.b4 Sh5 14.Te1
g5 15.Lf1 Sf4 16.g3 Sg6 17.Sh2 Sdf8 18.Lg2 f5 19.exf5 Lxf5 20.Se4
Sd7 21.Sg4 b6 22.Tb3 a5 23.a3 axb4 24.axb4 Ta2 25.Ta3 Ta8 26.Txa2
Txa2 27.Db1 Ta7 28.Sef6+ Sxf6 29.Dxf5 Sxg4 30.Dxg4 Kh8 31.Le4
Sf8 32.Kg2 Lf6 33.Th1 Dg7 34.Dh5 Kg8 35.h4 Ta3 36.hxg5 Lxg5
37.Lxg5 hxg5 38.Dg4 Ta2 39.Th5 Kf7 40.Txg5 Dh6 41.Lf5 Ta1 42.Th5
Dg7 43.Le6+ 1-0

(52) Dangelowski,Peter – Hochreiner,Jürgen [A80]

1.d4 f5 2.Lf4 Sf6 3.e3 e6 4.Sd2 b6 5.h3 Lb7 6.Sgf3 Sc6 7.Le2 Le7
8.c3 0-0 9.Dc2 a5 10.Tg1 Sd5 11.Lh2 Ld6 12.Se5 Lxe5 13.dxe5 Dh4
14.Sf3 Dh6 15.a3 g5 16.c4 Sde7 17.0-0-0 Tad8 18.h4 g4 19.Lf4 Dg7
20.Sd4 Sxe5 21.Sb5 Lc6 22.h5 Lxb5 23.cxb5 d5 24.Dc3 Sd7 25.f3 e5
26.Lg3 c5 27.bxc6 Sxc6 28.Kb1 Tc8 29.La6 Se7 30.Lxc8 Txc8 31.Db3
Dg5 32.f4 Dh6 33.fxe5 De6 34.Lf4 Sc5 35.Db5 Se4 36.Tc1 Sd2+
37.Ka1 Tc5 38.Txc5 bxc5 39.Db8+ Kg7 40.Dd6 Df7 41.e6 De8 42.Le5+
Kg8 43.Dd7 1-0

(53) Hochreiner,Jürgen – Hadlich,Winfried [A00]

Hauptturnierklasse (7), 06.01.2005 1-0

(54) Grothkopp,Dietrich – Dangelowski,Peter [D30]

Hauptturnierklasse (7), 24.11.2005

1.d4 d5 2.c4 e6 3.Sf3 c6 4.e3 Sf6 5.Sbd2 Sbd7 6.b3 Ld6 7.Lb2 b6
8.Ld3 Lb7 9.Tc1 0-0 10.Se5 c5 11.Sdf3 cxd4 12.exd4 Lb4+ 13.Lc3
Lxc3+ 14.Txc3 Sxe5 15.dxe5 Sd7 16.0-0 dxc4 17.Lxc4 Lxf3 18.Dxf3
Sxe5 19.Dh5 Sxc4 20.Txc4 Tc8 21.Db5 Txc4 22.Dxc4 Dd6 23.Da6
Dc7 24.h3 Td8 25.De2 Td5 26.Td1 h6 27.Txd5 exd5 28.De8+ Kh7
29.De2 Dc5 30.De5 d4 31.De4+ f5 32.Dd3 a5 33.g4 g6 34.gxf5 gxf5
35.h4 De5 36.h5 De1+ 37.Kg2 De4+ 38.Df3 Dxf3+ 39.Kxf3 Kg7 40.Ke2
Kf6 41.f4 Ke6 42.Kd3 Kd5 43.a3 0-1

Pinneberger Winterturnier 2005

(55) Lorenz,Jens – Iwanow,Thomas [C10]

1.e4 e6 2.d4 d5 3.Sd2 dxe4 4.Sxe4 Le7 5.Sf3 Sf6 6.Sxf6+ Lxf6 7.c3
b6 8.Lf4 Lb7 9.Lb5+ c6 10.La4 0-0 11.0-0 b5 12.Lc2 Sa6 13.Dd3 g6
14.Se5 Sc7 15.Sg4 Lg7 16.Dg3 Se8 17.h4 Sf6 18.Sxf6+ Lxf6 19.h5
Dd5 20.Le5 Lxe5 21.dxe5 Dd2 22.Le4 Dh6 23.Dh4 Dxh5 24.Dxh5
gxh5 25.Tad1 $\frac{1}{2}$ - $\frac{1}{2}$

(56) Rakhmanov,Vsevolod – Lemke,Detlef [B85]

1.e4 c5 2.Sf3 Sc6 3.d4 cxd4 4.Sxd4 Sf6 5.Sc3 d6 6.Le2 e6 7.0-0 Le7
8.Kh1 0-0 9.f4 Ld7 10.Le3 a6 11.a3 Dc7 12.Sxc6 Lxc6 13.Lf3 Tfd8
14.De1 d5 15.exd5 Sxd5 16.Sxd5 Lxd5 17.Df2 Lxf3 18.gxf3 Td5
19.Tg1 Lc5 20.Lxc5 Dxc5 21.Dxc5 Txc5 22.c3 Td8 23.Taf1 g6 24.Tf2
Tf5 25.Tgg2 Td1+ 26.Tg1 Tfd5 27.Txd1 Txd1+ 28.Kg2 Kg7 29.Te2 Kf6
30.Kf2 Kf5 31.Kg3 Tg1+ 32.Kf2 Td1 33.Kg3 b6 34.Te5+ Kf6 35.Te3
Td2 36.b3 b5 37.Te4 Td3 38.a4 Txc3 39.axb5 Txb3 40.bxa6 Ta3
41.Te5 Txa6 42.h4 Td6 43.Kg4 Td5 44.Te4 Kg7 45.Ta4 Td7 46.Ta6
Td4 47.Kg3 Kf6 48.Ta7 Td1 49.Tb7 h6 50.Ta7 Td8 51.Kg4 Td1 52.Ta5
Td7 53.Te5 Te7 54.Tc5 Td7 55.Ta5 Td4 56.Kg3 Td5 57.Ta7 Tf5 58.Tb7
e5 59.Tb6+ Kg7 60.fxe5 Txe5 61.Tb7 Kf6 62.Ta7 Te7 63.Ta5 Te5
64.Ta7 g5 65.hxg5+ Txg5+ 66.Kh4 Kg6 67.f4 Tg1 68.Ta5 f6 69.f5+ Kf7
70.Ta7+ Kf8 71.Kh5 Tg5+ 72.Kxh6 $\frac{1}{2}$ - $\frac{1}{2}$

A-Gruppe

(57) Stier,Uwe – Marx,Alexander [A00]

A-Gruppe (1), 31.12.2005 0-1

(58) Metzner,Arne – Himmelstaub,Werner [C51]

1.e4 e5 2.Sf3 Sc6 3.Lc4 Lc5 4.b4 Lxb4 5.c3 Le7 6.Db3 Sh6 7.a4 Sa5
8.Da2 Sxc4 9.Dxc4 d6 10.d4 Lf6 11.0-0 Sg8 12.Sa3 c6 13.dxe5 dxe5
14.Le3 Le6 15.De2 Se7 16.Sc4 Dc7 17.Tfd1 0-0 18.Sg5 Lxc4 19.Dxc4
h6 20.Sh3 Sg6 21.De2 b6 22.Kh1 Tfd8 23.g4 Sf4 24.Lxf4 exf4 25.f3
Lxc3 26.Ta3 Ld4 27.Tad3 Le3 28.g5 h5 29.Dg2 g6 30.Db2 Txd3
31.Txd3 Td8 32.Txd8+ Dxd8 0-1

(59) Linke,Harry – Retzlaff,Wolfgang [C53]

1.e4 e5 2.Sf3 Sc6 3.Lc4 Lc5 4.c3 Df6 5.b4 Lb6 6.a4 a6 7.a5 La7 8.0-0
b5 9.Ld5 Sge7 10.d4 exd4 11.e5 Sxe5 12.Lxa8 Sxf3+ 13.Lxf3 dxc3
14.Dc2 d5 15.Sxc3 c6 16.Lb2 Lf5 17.De2 Ld4 18.Tae1 Le6 19.Sd1
Lxb2 20.Sxb2 0-0 21.Sd3 Sg6 22.Lg4 Te8 23.Sc5 Sf4 24.Df3 h5
25.Lxe6 fxe6 26.Te3 e5 27.Tfe1 g5 28.Sd7 Df5 29.Sxe5 Te6 30.g3 g4
31.Dxf4 1-0

(60) Tornier,Siegfried – Zimmermann,Manfred [A00]

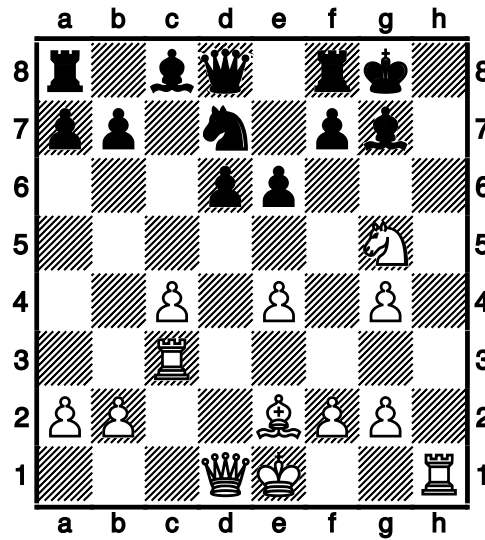
A-Gruppe (1), 31.12.2004 1/2-1/2

(61) Marx,Alexander – Zimmermann,Manfred [E73]

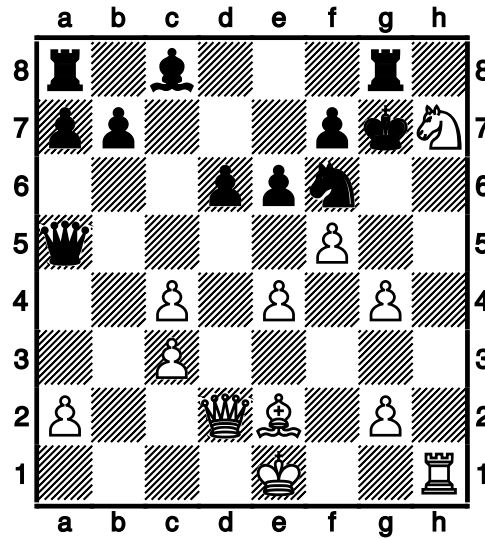
A-Gruppe (2), 24.11.2005

1.d4 Sf6 2.c4 g6 3.Sc3 Lg7 4.e4 d6 5.Le2 0-0 6.Lg5 Sbd7 7.Sf3 e6
8.Tc1 h6 9.Le3 Sg4 10.Lf4 c5 11.h3 cxd4 12.hxg4 dxc3 13.Txc3 g5
14.Lxg5 hxg5 15.Sxg5

Pinneberger Winterturnier 2005



15...Da5 16.Dd2 Lxc3 17.bxc3 Sf6 18.f4 Kg7 19.f5 Tg8 20.Sh7



1-0

(62) Retzlaff, Wolfgang – Tornier, Siegfried [C35]

1.e4 e5 2.f4 exf4 3.Sf3 Le7 4.h4 g5 5.hxg5 Lxg5 6.Lc4 Sc6 7.a3 d6
8.d4 De7 9.Sc3 a6 10.0-0 Lg4 11.Sd5 Dd7 12.Dd3 h6 13.Lxf4 Lxf4
14.Sxf4 0-0-0 15.d5 Lxf3 16.dxc6 Dxc6 17.Txf3 Sf6 18.Sd5 Dc5+
19.De3 Sxe4 20.Dxc5 dxc5 21.Txf7 c6 22.Sb6+ Kb8 23.Ld3 Sg5
24.Te7 Td4 25.Sd7+ Ka7 26.Sxc5 Tg8 27.Le4 Sh3+ 28.Kh2 Sf2
29.Txb7+ Ka8 30.Te7 Sxe4 31.Sxe4 h5 32.Tf1
1-0

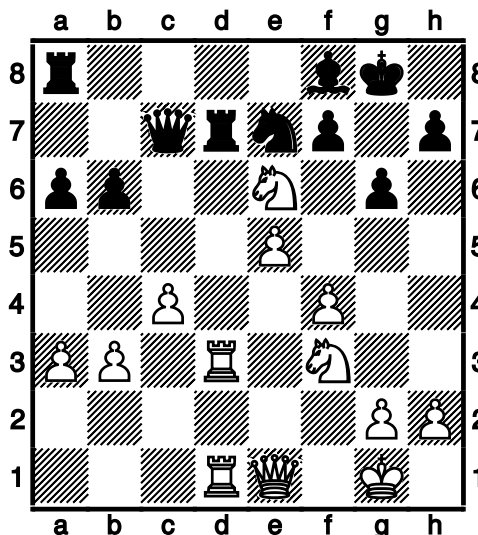
(63) Himmelstaub,Werner – Linke,Harry [D02]

1.d4 d5 2.Sf3 Sf6 3.g3 Sc6 4.Lg2 e6 5.0-0 h6 6.Te1 Ld6 7.Sbd2 0-0
8.e4 dxe4 9.Sxe4 Sxe4 10.Txe4 g5 11.h4 f5 12.Te1 Le7 13.hxg5 hxg5
14.Le3 Lf6 15.c3 Tf7 16.Dc1 Tg7 17.Td1 g4 18.Se5 Se7 19.Lh6 Th7
20.Lg5 Kg7 21.Lf4 Sd5 22.Ld2 Th5 23.c4 Sb6 24.Lf4 c6 25.a4 a5
26.Dc3 De7 27.f3 Lxe5 28.Lxe5+ Kg6 29.fxg4 fxg4 30.Le4+ Kf7
31.Tf1+ Kg8 32.Tf4 Sd7 33.Txg4+ Tg5 34.Df3 Sxe5 35.dxe5 Dc5+
36.Kg2 Dxe5 37.Tf1 Dxb2+ 38.Tf2
1-0

(64) Stier,Uwe – Metzner,Arne [A03]

A-Gruppe (2), 13.10.2005

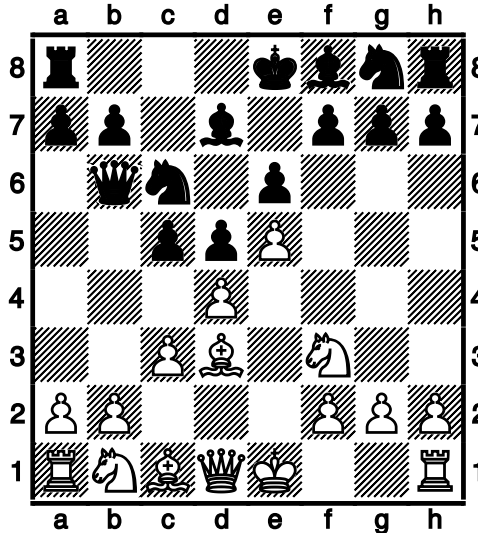
1.f4 d5 2.Sf3 Sc6 3.e3 a6 4.d3 e6 5.Sbd2 g6 6.Le2 Lg7 7.a3 Sge7
8.Tb1 Sf5 9.Sb3 b6 10.0-0 Lb7 11.Ld2 d4 12.e4 Se3 13.Lxe3 dxe3
14.e5 Se7 15.c4 c5 16.d4 cxd4 17.Sbxd4 0-0 18.Db3 Le4 19.Tbd1 Dc7
20.Dxe3 Db7 21.Ld3 Lxd3 22.Txd3 Tfd8 23.Tfd1 Dc7 24.b3 Lf8 25.De1
Td7 26.Sxe6



1-0

(65) Metzner,Arne – Marx,Alexander [C02]

1.e4 e6 2.d4 d5 3.e5 c5 4.c3 Sc6 5.Sf3 Ld7 6.Ld3 Db6



7.Lc2 cxd4 8.cxd4 Lb4+ 9.Sc3 f6 10.0-0 fxe5 11.dxe5 Sge7 12.Sa4
Dc7 13.a3 La5 14.b4 Lb6 15.Sxb6 axb6 16.Lb2 0-0 17.Lxh7+ Kf7
18.Sg5+ Ke8 19.Dh5+ Kd8 20.Sf7+ Kc8 21.Sd6+ Kb8 22.Ld3 Sf5
23.Lxf5 exf5 24.Dg6 Lc8 25.Tac1 Dd7 26.Tfe1 Tg8 27.b5 Se7 28.Dg3
De6 29.De3 Ld7 30.Dxb6 Ta7 31.Ld4 Sc8 32.Dc7+ Ka8 33.Lxa7 Sxd6
34.exd6 Tc8 35.Dxc8+ Lxc8 36.Txe6 1-0

(66) Linke,Harry – Stier,Uwe [B09]

1.e4 d6 2.d4 Sf6 3.Sc3 g6 4.f4 c6 5.e5 dxe5 6.fxe5 Sd5 7.Sxd5 cxd5
8.Sf3 Sc6 9.Lb5 Da5+ 10.Dd2 Dxb5 11.a4 Db6 12.0-0 Lg7 13.a5 Dc7
14.Df4 0-0 15.Ld2 Lf5 16.b4 Sd8 17.c3 Se6 18.Dh4 f6 19.Lh6 Le4
20.Dh3 Dc8 21.Sd2 Lxh6 22.Sxe4 dxe4 23.d5 Sf4 24.Dxh6 Sxd5
25.Tac1 De6 26.c4 Sxb4 27.Tf4 fxe5 28.Txe4 Df5 29.De3 Df2+ 30.Dxf2
Txf2 31.Txe5 Tf7 32.Tb5 Sc6 33.Txb7 Sxa5 34.Tb5 Sc6 35.Ta1 Taf8
36.h3 e6 37.Ta6 Sd4 38.Tba5 Tc8 39.c5 Sb3 40.Ta3 Sxc5 41.Txa7
Txa7 42.Txa7 h5 43.Kf2 Tf8+ 44.Ke3 Tf7 45.Ta8+ Kg7 46.Te8 Kf6
47.Kd4 Sd7 48.g4 hxg4 49.hxg4 Te7 50.g5+ Kf7 51.Td8 Sf8 52.Ke5
Sh7 53.Kf4 e5+ 54.Kg4 e4 55.Td2 e3 56.Te2 Te4+ 0-1

(67) Tornier, Siegfried – Himmelstaub, Werner [C26]

1.e4 e5 2.Lc4 Sf6 3.Sc3 c6 4.a4 Le7 5.Sf3 d5 6.exd5 cxd5 7.Lb5+ Sc6 8.Lxc6+ bxc6 9.Sxe5 Dd6 10.d4 La6 11.Se2 0-0 12.0-0 Se4 13.Lf4 De6 14.Te1 Tfe8 15.Sg3 Sxg3 16.Lxg3 Df6 17.Te3 De6 18.Dh5 g6 19.Dh6 Lf8 20.Df4 f5 21.Sg4 Df7 22.Se5 De6 23.Tae1 Lg7 24.Sf3 Dd7 25.Lh4 Te4 26.Dg5 Tae8 27.c3 Lc4 28.Sd2 Txe3 29.Txe3 La6 30.Txe8+ Dxe8 31.De7 Dxe7 32.Lxe7 Ld3 33.a5 a6 34.f4 Kf7 35.Lc5 Ke6 36.Kf2 h6 37.Ke3 Lb5 38.g3 g5 39.Sf3 g4 40.Se5 Lf6 41.b3 Ld8 42.Lb4 h5 43.c4 dxc4 44.bxc4 La4 45.Sd3 Ld1 46.Sc5+ Kd6 47.Sxa6+ Kd7 48.Sc5+ Kc8 49.Kd3 h4 50.Se6 Lf6 51.a6 Kb8 52.Lc5 hxg3 53.hxg3 Lh4 54.gxh4 g3 55.d5 cxd5 56.cxd5 Lb3 57.a7+ Kb7 58.Kd4 g2 59.Ke5 Lc4 60.h5 1-0

(68) Zimmermann, Manfred – Retzlaff, Wolfgang [B33]

1.e4 c5 2.Sf3 Sc6 3.d4 cxd4 4.Sxd4 Sf6 5.Sc3 e5 6.Sdb5 Lb4 7.Sd6+ Ke7 8.Sxc8+ Txc8 9.Lg5 Sd4 10.Ld3 Txc3 11.0-0 Txd3 12.Dxd3 Se6 13.Lxf6+ gxf6 14.Tad1 Dc7 15.c3 Lc5 16.g3 Dc6 17.Kh1 f5 18.f3 fxe4 19.fxe4 Sg5 20.Tde1 Tf8 21.Tf5 f6 22.Kg2 b5 23.Te2 Ke6 24.g4 Tg8 25.Kg3 h5 26.h3 hxg4 27.hxg4 Th8 28.Dc2 Th3+ 29.Kg2 Te3 30.Txe3 Lxe3 31.Db3+ Dc4 32.Dc2 Lf4 33.Txg5 Lxg5 0-1

(69) Marx, Alexander – Retzlaff, Wolfgang [D18]

1.d4 d5 2.c4 c6 3.Sf3 Sf6 4.Sc3 dxc4 5.a4 Lf5 6.e3 e6 7.Lxc4 Sbd7 8.Db3 Sb6 9.Le2 a5 10.0-0 Ld6 11.Se5 Dc7 12.Ld2 Sfd5 13.Tac1 Sxc3 14.Lxc3 f6 15.Sf3 Ke7 16.g3 g5 17.Tfd1 h5 18.Lf1 h4 19.Lg2 Sd5 20.Le1 hxg3 21.fxg3 Ta6 22.Td2 Tb6 23.Dd1 Sxe3 24.De2 Sxg2 25.Kxg2 Lb4 26.Tdd1 Dd6 27.Lf2 Dd5 28.Kg1 Lg4 29.Td3 Ld6 30.Tcc3 Tb4 31.b3 Tb6 32.Te3 f5 33.Dd3 f4 34.gxf4 gxf4 35.Dg6 Dh5 36.Lh4+ Kd7 37.Dg7+ Kc8 38.Txe6 Lxe6 0-1

(70) Himmelstaub,Werner – Zimmermann,Manfred [B90]

1.e4 c5 2.Sf3 d6 3.d4 cxd4 4.Sxd4 Sf6 5.Sc3 a6 6.f3 Sbd7 7.Le3 b5
8.a3 Lb7 9.Le2 e6 10.0-0 Le7 11.De1 Tc8 12.g4 Sb6 13.Df2 Sc4
14.Lxc4 Txc4 15.Tad1 Sd7 16.Sb3 Tc8 17.Ld4 0-0 18.Dg3 Dc7 19.Le3
La8 20.Lf4 e5 21.Le3 Sb6 22.Sd2 Sc4 23.Sxc4 Dxc4 24.Td2 De6
25.h4 Tfd8 26.Tfd1 Tc4 27.Td3 Tdc8 28.T1d2 T4c7 29.g5 Kh8 30.Lb6
Td7 31.La5 f5 32.Lb4 f4 33.Dg2 Tcd8 34.Kf2 Dc4 35.Ke1 Df7 36.Dg4
g6 1-0

(71) Stier,Uwe – Tornier,Siegfried [A02]

1.f4 e6 2.Sf3 Sf6 3.e3 Le7 4.d4 d6 5.Ld3 Sc6 6.a3 Sg4 7.0-0 0-0
8.Sc3 f5 9.h3 Sh6 10.De2 Lf6 11.Sd1 Ld7 12.Sf2 a6 13.c3 b5 14.Dc2
g6 15.e4 Se7 16.Le3 Tc8 17.Dd2 Sf7 18.Tad1 Lc6 19.De2 fxe4
20.Sxe4 Lxe4 21.Lxe4 Sf5 22.Kh2 d5 23.Lc2 Lh4 24.Lf2 Lxf2 25.Txf2
Dd6 26.Se5 Tce8 27.Sg4 Te7 28.Se5 c5 29.Dd2 cxd4 30.cxd4 Tc8
31.Lxf5 1/2-1/2

(72) Metzner,Arne – Linke,Harry [C50]

A-Gruppe (4), 03.11.2005

1.e4 e5 2.Sf3 Sc6 3.Lc4 Le7 4.a3 Sf6 5.d3 0-0 6.Sc3 d6 7.h3 Sd4
8.Sxd4 exd4 9.Se2 c5 10.Sf4 b5 11.La2 Lb7 12.0-0 d5 13.e5 Se8
14.Dg4 Lg5 15.Te1 Lxf4 16.Lxf4 f5 17.Dg3 De7 18.Te2 c4 19.Tae1
De6 20.b3 a5 21.Lc1 Ta6 22.Df4 Db6 23.e6 Tf6 24.Dh4 h6 25.Dh5 Ta8
26.Te5 g5 27.h4 Sg7 28.De2 gxh4 29.e7 Te8 30.Lf4 Kf7 31.bxc4 dxc4
32.dxc4 bxc4 33.Lxc4+ Kg6 34.Ld3 h5 35.g4 hxg3 36.fxg3 Dc6
37.Kh2 La6 38.Lxa6 Dxa6 39.Dxa6 Txa6 40.Td5 Se6 41.Td6 Txd6
42.Lxd6 Sg5 43.Td1 Kf7 44.Kg2 Tc8 45.Txd4 Txc2+ 46.Kf1 Se4 47.Lf4
Kxe7 48.Td5 Ke6 49.Te5+ Kf6 50.Txa5 Tf2+ 51.Kg1 h4 52.Ta6+ Kg7
53.Ta7+ Kg8 54.Ta8+ Kf7 55.Ta7+ Ke6 56.Ta6+ Kd5 57.Ta5+ Kc4
58.Txf5 hxg3 59.a4 Ta2 60.a5 Kd3 61.Tb5 Ta3 62.Kg2 Sc3 63.Tg5 Se4
64.Lxg3 Ta2+ 65.Kh3 Sxg5+

0-1

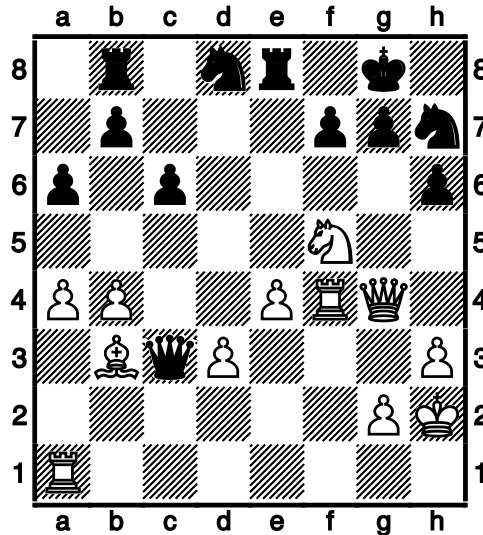
Pinneberger Winterturnier 2005

(73) Linke,Harry – Marx,Alexander [A00]

A-Gruppe (5), 04.01.2005 1-0

(74) Tornier,Siegfried – Metzner,Arne [C26]

1.e4 e5 2.Lc4 Sf6 3.Sc3 Lc5 4.Sf3 Sc6 5.a4 a6 6.h3 h6 7.0-0 0-0 8.d3
d6 9.Se2 Te8 10.c3 Sh7 11.Sg3 Tb8 12.b4 Lb6 13.Ld2 De7 14.Dc1 Df6
15.Dd1 Dg6 16.Kh2 Sd8 17.Sh4 Df6 18.Shf5 Lxf5 19.Sxf5 Dg6 20.f4
d5 21.Lxd5 c6 22.Lb3 Lc7 23.Sh4 Df6 24.Dg4 exf4 25.Lxf4 Lxf4+
26.Txf4 Dxc3 27.Sf5



27...Dxa1 28.Sxh6+ Kh8 29.Sxf7+ Sxf7 30.Lxf7 g5 31.Tf5 Tg8 32.e5
Tg7 33.e6 De1

1/2-1/2

(75) Zimmermann,Manfred – Stier,Uwe [A00]

A-Gruppe (5), 04.01.2005

-:+

(76) Retzlaff,Wolfgang – Himmelstaub,Werner [D56]

1.d4 Sf6 2.c4 e6 3.Sc3 d5 4.Lg5 Le7 5.e3 0-0 6.Sf3 h6 7.Lh4 dxc4
8.Lxc4 c6 9.0-0 Sd5 10.Lxe7 Dxe7 11.a3 Sd7 12.Lb3 S7f6 13.Lc2 b6
14.Dd3 g6 15.Se5 Lb7 16.f4 Sxc3 17.bxc3 c5 18.Tae1 cxd4 19.cxd4
Tac8 20.Tf2 Tc7 21.e4 Tfc8 22.Sxg6 fxg6 23.e5 Se8 24.Dxg6+ Sg7
25.Dh7+ Kf8 26.Lg6 Df7 27.Lxf7 Txf7 28.Dh8+ Ke7 29.Dxh6 Sf5
30.Dg5+ Kd7 31.Dg4 Ld5 32.Dd1 Tc4 33.Td2 Tg7 34.Tee2 Lxg2
35.Txg2 Txg2+ 36.Txg2 Txd4 37.Dxd4+ Sxd4 38.Td2
1-0

(77) Marx,Alexander – Himmelstaub,Werner [A00]

A-Gruppe (6), 05.01.2005 1-0

(78) Stier,Uwe – Retzlaff,Wolfgang [A00]

A-Gruppe (6), 05.01.2005 1/2-1/2

(79) Metzner,Arne – Zimmermann,Manfred [A00]

A-Gruppe (6), 05.01.2005 1-0

(80) Linke,Harry – Tornier,Siegfried [C50]

1.e4 e5 2.Sf3 Sc6 3.Lc4 Le7 4.c3 Sf6 5.d4 Sxe4 6.dxe5 d6 7.Lxf7+
Kxf7 8.Dd5+ Le6 9.Dxe4 Ke8 10.exd6 Dxd6 11.Lf4 Dd7 12.Sg5 Lf5
13.Dc4 Lxg5 14.Lxg5 Ld3 15.Dh4 De6+ 16.Le3 Td8 17.Sd2 Se5
18.Da4+ b5 19.Dxa7 Dg4 20.f3 Dxg2 21.0-0-0 Lg6 22.Dxc7 Sd3+
23.Kb1 Se1+ 24.Kc1 Dxh1 25.Dc6+ Kf7 26.Dc7+ Ke6 27.Se4 Txd1+
28.Kxd1 Sxf3+ 29.Ke2 Dg2+ 30.Sf2 Sg1+ 31.Ke1 Dd5 32.Dxg7 Sf3+
33.Kf1 Td8 34.Lb6 Td7 35.Dg8+ Tf7 36.b3 Sxh2+ 37.Ke1 Sf3+ 38.Kf1
Ld3+ 39.Kg2 Sg5+ 40.Kg1 Sf3+ 41.Kg2 Se5+ 42.Kh2 Dd6 43.Le3
Sg4+ 44.Kh3 Sxf2+ 45.Lxf2 Lf1+ 46.Kh4 Dh2+ 47.Kg4 Df4+ 48.Kh5
Le2+ 0-1

(81) Tornier,Siegfried – Marx,Alexander [A00]

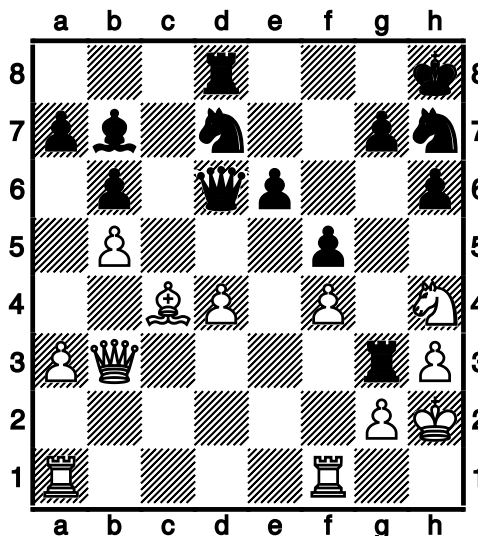
A-Gruppe (7), 06.01.2005 0-1

(82) Zimmermann,Manfred – Linke,Harry [C35]

1.e4 e5 2.f4 exf4 3.Sf3 Le7 4.Lc4 Lh4+ 5.Kf1 c6 6.d3 d5 7.exd5 cxd5
8.De2+ Le6 9.Lb3 Lf6 10.Sc3 Se7 11.Lxf4 0-0 12.Sb5 Sa6 13.c3 Sg6
14.Lg3 Te8 15.Dd2 Db6 16.Sbd4 Sc5 17.Lf2 Dd6 18.Lg3 Dd7 19.Lc2
Lg4 20.Te1 Lxf3 21.Txe8+ Txe8 22.gxf3 Lxd4 23.cxd4 Df5 24.Kg2 Se6
25.Te1 h5 0-1

(83) Retzlaff,Wolfgang – Metzner,Arne [D53]

1.d4 d5 2.c4 e6 3.Sc3 Sf6 4.Lg5 Le7 5.e3 h6 6.Lh4 c6 7.a3 b6 8.b4
dxc4 9.Lxc4 Sd5 10.Lxe7 Dxe7 11.Sge2 0-0 12.Se4 Kh8 13.Dd3 Sd7
14.f4 f5 15.Sd2 Lb7 16.0-0 S5f6 17.h3 c5 18.b5 Tad8 19.Sf3 Sh7
20.Db3 Tf6 21.Sg3 Tg6 22.Kh2 cxd4 23.exd4 Dd6 24.Sh4 Txg3



25.Kxg3 Sg5 26.De3 Se4+ 27.Kh2 Sdf6 28.Tad1 g5 29.Sg6+ Kh7
30.Se5 gxf4 31.Txf4 Sh5 32.Th4 Seg3 33.Kg1 De7 34.Txh5 Sxh5
35.Sc6 Dg7 36.Lxe6 Tf8 37.Df3 Dg6 38.d5 Tf6 39.Se5 De8 40.Lxf5+
Kh8 41.Te1 Dg8 42.Dxh5

1-0

(84) Himmelstaub,Werner – Stier,Uwe [B07]

1.e4 d6 2.d4 Sf6 3.Sc3 g6 4.Le3 c6 5.f3 Lg7 6.Dd2 h5 7.h4 Sbd7 8.0-0 Da5 9.Kb1 b5 10.Sh3 Sb6 11.b3 Tb8 12.Ka1 Ld7 13.Sg5 0-0 14.Sd5 Dxd2 15.Sxe7+ Kh8 16.Txd2 Tbe8 17.e5 Sfd5 18.Sxd5 Sxd5 19.Lf2 dxe5 20.c4 Sb6 21.g3 bxc4 22.Lxc4 Sxc4 23.bxc4 exd4 24.Lxd4 Lxd4+ 25.Txd4 $\frac{1}{2}$ - $\frac{1}{2}$

B-Gruppe

(85) Schmoll,Peter – Lüttig,Hendrik [B20]

B-Gruppe (1), 13.10.2005

1.e4 c5 2.c4 Sc6 3.Sc3 d6 4.h3 Sf6 5.Sf3 g6 6.d3 Lg7 7.Ld2 0-0 8.Le2 b6 9.0-0 Lb7 10.Dc1 Sd7 11.Lh6 Sce5 12.Sh2 e6 13.Lxg7 Kxg7 14.f4 Sc6 15.Sg4 f5 16.exf5 exf5 17.Sh2 Sd4 18.Lf3 Sxf3+ 19.Sxf3 Te8 20.Dd2 Sf6 21.Tae1 Dd7 22.Te2 Txe2 23.Sxe2 Te8 24.Sg3 Te7 25.Te1 Lxf3 26.gxf3 Txe1+ 27.Dxe1 De8 28.Kf2 Dxe1+ 29.Kxe1 d5 30.Kd2 d4 31.Kc2 Kh6 32.Kb3 Se8 33.Ka4 Sc7 34.b4 Kg7 35.bxc5 bxc5 36.Ka5 Kf6 37.h4 h6 38.Se2 g5 39.fxg5+ hxg5

$\frac{1}{2}$ - $\frac{1}{2}$

(86) Sengbusch,Gerhard – Kronhof,Holger [B23]

B-Gruppe (1), 13.10.2005

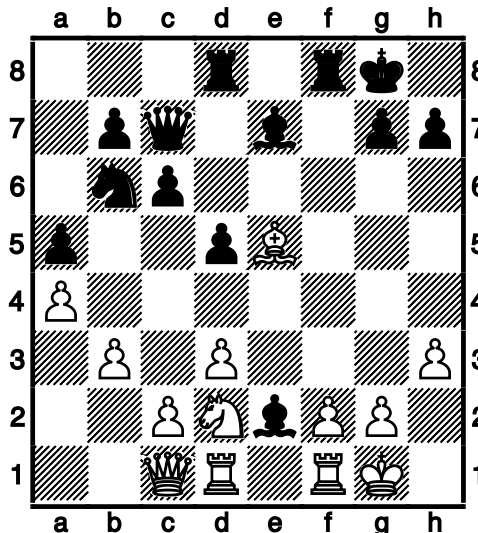
1.e4 c5 2.Sc3 e6 3.Sf3 Sf6 4.a3 d5 5.exd5 exd5 6.Lb5+ Sc6 7.0-0 Le7 8.Te1 0-0 9.h3 Ld6 10.d3 Dc7 11.Lxc6 Dxc6 12.Ld2 Le6 13.Dc1 d4 14.Se4 Sxe4 15.Txe4 Ld5 16.Tg4 Lxf3 17.gxf3 Dxf3 18.Tg2 Kh8 19.Dd1 Dxh3 20.Dg4 Dxg4 21.Txg4 Tfe8 22.Te4 Txe4 23.dxe4 Te8 24.f3 h6 25.Te1 g5 26.Te2 f6 27.Kg2 Kg7 28.c3 d3 29.Te1 c4 30.Le3 a6 31.a4 Lc7 32.Ld4 Te6 33.Th1 Kg6 34.Td1 Lf4 35.Kf2 h5 36.b4 cxb3 37.Txd3 b2 38.Td1 Lc1

0-1

Pinneberger Winterturnier 2005

(87) Mungard,Jens-Uwe – Möller,Peter [C41]

1.e4 e5 2.Sf3 d6 3.h3 Le6 4.d3 Le7 5.Le2 f5 6.exf5 Lxf5 7.Sc3 Sf6
8.Lg5 Sbd7 9.Dd2 c6 10.0-0 0-0 11.b3 Sb6 12.a4 a5 13.Tad1 Dc7
14.Dc1 Tad8 15.Sh2 d5 16.Sb1 Ld6 17.Sg4 Le7 18.Sd2 Lxg4 19.Lxf6
Lxe2 20.Lxe5



20...Ld6 21.Tde1 Lxf1 22.Sf3 Lxe5 23.Sxe5 Lxg2 24.Kxg2 Tf6 25.Sg4
Tg6 26.f4 Dd7 27.Kf3 Te8 28.Th1 d4 29.Th2 Dd5+ 30.Kf2 Sd7
0-1

(88) Fladda,Walter – Kaland,Joachim [C02]

[C02: Französische Verteidigung (Vorstoßvariante)]

1.e4 e6 2.d4 d5 3.e5 c5 [letzter Buchzug]
4.Lb5+ Ld7 5.Lxd7+ Sxd7 6.Le3 Db6 7.b3 Tc8 8.Se2 cxd4 9.Lxd4 Lc5
10.c3 Se7 [10...f6 11.Lxc5 Sxc5 12.Sc1♣]
11.0-0 0-0 12.Dd2 Sg6 13.b4 Lxd4 14.cxd4 Tc4 [14...f6!? 15.exf6
Sxf6♣]
15.a3 Tfc8 16.De3 Se7 17.Sd2 T4c6 18.g4 f5 [18...a5 19.Tab1♣]
19.Dg5 [Weiß droht Materialgewinn: Dg5xe7]
19...Dd8 20.Tac1 Txc1 21.Txc1 Txc1+ 22.Sxc1 De8 23.Se2 fxg4
24.Dxg4 Dg6 [24...Sf8 25.Sf3=]

1/2-1/2

(89) Lüttig,Hendrik – Kaland,Joachim [A00]

1.b4 e6 2.Lb2 Sf6 3.b5 c6 4.c4 Le7 5.e3 0-0 6.Sf3 d5 7.Le2 cxb5
8.cxb5 Sbd7 9.0-0 b6 10.d4 Lb7 11.a4 Tc8 12.Sbd2 Ld6 13.La3 Lxa3
14.Txa3 De7 15.Da1 h6 16.Tc1 Txc1+ 17.Dxc1 Tc8 18.Tc3 Dd8
19.Txc8 Dxc8 20.Dxc8+ Lxc8 21.Se1 Sb8 22.Sc2 a6 23.Sb4 axb5
24.axb5 Se8 25.Sb1 Sd6 26.Sa3 Kf8 27.Kf1 Ke7 28.Ke1 Kd8 29.Kd1
Se4 30.Ke1 Lb7 31.f3 Sd6 32.Sb1 f6 33.Sc3 La8 34.Sa4

1/2-1/2

(90) Möller,Peter – Fladda,Walter [C41]

1.e4 e5 2.Sf3 d6 3.c3 Lg4 4.Le2 Le7 5.d4 exd4 6.cxd4 Sf6 7.d5 0-0
8.Sc3 Sfd7 9.Sd4 Lxe2 10.Dxe2 Lf6 11.Sf5 Se5 12.Lf4 Sg6 13.Lg3
Le5 14.Dg4 Sd7 15.0-0 Sf6 16.De2 Te8 17.Sb5 Lxg3 18.Sxg3 Sxd5
19.Dc4 c6 20.exd5 Se5 21.Db3 cxb5 22.Dxb5 b6 23.Tac1 Tc8 24.Txc8
Dxc8 25.Kh1 g6 26.Te1 Td8 27.Se4 Kg7 28.f4 Sg4 29.Db4 Dd7
30.Dd4+ f6 31.Sg5 Te8 32.Se6+ Kf7 33.Dd2 Sh6 34.Df2 Kg8 35.Dh4
Sf5 36.Dxf6 Df7 37.Dg5 Sd4 38.Dg4 Df5 39.Dxf5 Sxf5 40.g4 Sd4
41.Kg2 Sc2 42.Te4 1/2-1/2

(91) Kronhof,Holger – Mungard,Jens-Uwe [A00]

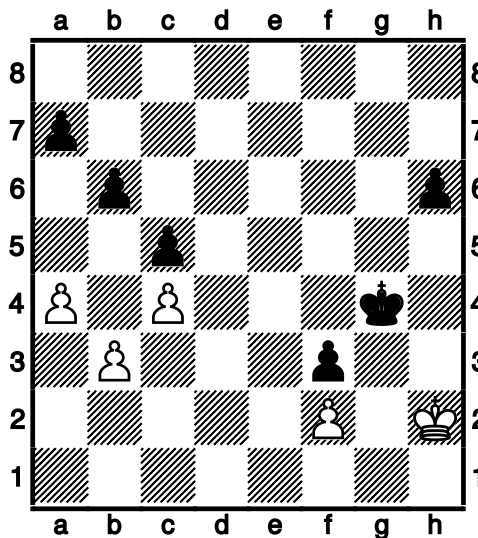
B-Gruppe (2), 01.01.2005 1/2-1/2

(92) Schmoll,Peter – Sengbusch,Gerhard [C24]

1.e4 e5 2.Lc4 Sf6 3.d3 c6 4.Lg5 d5 5.Lxf6 gxf6 6.exd5 cxd5 7.Lb3
Le6 8.Dh5 Lb4+ 9.c3 Lc5 10.Se2 De7 11.0-0 Df8 12.d4 Ld6 13.dxe5
Lxe5 14.Td1 Dg7 15.Dh4 Dg4 16.Dxg4 Lxg4 17.f3 Le6 18.Lxd5 Lxd5
19.Txd5 Sc6 20.Sa3 Td8 21.Txd8+ Kxd8 22.Td1+ Ke7 23.Sc1 a6
24.Te1 Kd7 25.Sd3 Kc7 26.Sc4 b5 27.Scxe5 Sxe5 28.Sf4 Td8 29.Sh5
Td6 30.Sxf6 Txf6 31.Txe5 Kd7 32.Kf2 Td6 33.Ke2 Th6 34.h3 Tg6
35.g4 Th6 36.Th5 Te6+ 37.Kf2 h6 38.g5 hxg5 39.Txg5 Th6 40.Kg3 f6
41.Tg7+ Kc6 42.Kg4 f5+ 43.Kg3 f4+ 44.Kg4 Kc5 45.h4 Kd5 46.h5 Ke5
47.Tg5+ Kf6 48.Tg6+ Txg6+ 49.hxg6 Kxg6 50.Kxf4 Kf6 51.Ke4
1-0

(93) Sengbusch, Gerhard – Lüttig, Hendrik [B30]

1.e4 c5 2.Sc3 Sc6 3.Sf3 d6 4.Lc4 e6 5.d3 g6 6.Ld2 Lg7 7.Tb1 Sge7
8.Sg5 0-0 9.h4 Sa5 10.h5 Sxc4 11.dxc4 f6 12.Sf3 g5 13.Le3 h6 14.Sb5
Db6 15.Dxd6 Dxd6 16.Sxd6 b6 17.Sxc8 Taxc8 18.0-0 f5 19.exf5 exf5
20.Tfe1 Sc6 21.a3 f4 22.Ld2 Tcd8 23.Te6 Tf6 24.Txf6 Lxf6 25.Lc3 Sd4
26.Sxd4 Lxd4 27.Lxd4 Txd4 28.b3 Td2 29.Tc1 g4 30.Kf1 f3 31.a4 Kf7
32.gxf3 gxf3 33.Ke1 Te2+ 34.Kf1 Kf6 35.Te1 Txc2 36.Te3 Tc1+ 37.Te1
Txe1+ 38.Kxe1 Kg5 39.Kf1 Kxh5 40.Kg1 Kg4 41.Kh2



41...h5 42.Kh1 h4 43.Kh2 a5 44.Kh1 Kf4 45.Kh2 Ke4 46.Kh3 Kd3
47.Kxh4 Kc3 48.Kg4 Kxb3 49.Kxf3 Kxc4 50.Ke3 Kd5 51.f4 Ke6
52.Kd3 Kf5 53.Ke3 Kf6 54.Kd3 Ke6 55.Ke4 Kf6 56.f5 Ke7 57.Kd5 Kf7
58.Ke4 Kf6 59.Kf4 c4 60.Ke3 Kxf5 61.Kd4 Ke6 62.Kxc4 Kd6 63.Kb5
Kc7 64.Kc4 Kc6 65.Kb3 Kd5 66.Kc3 Kc5 67.Kb3 Kd4 68.Kb2 Kc4
69.Ka3 Kc3 70.Ka2 Kb4 71.Kb2 Kxa4 72.Kc3 b5

0-1

(94) Mungard, Jens-Uwe – Schmoll, Peter [A00]
B-Gruppe (3), 02.01.2005

1-0

(95) Fladda,Walter – Kronhof,Holger [C02]

1.e4 e6 2.d4 d5 3.e5 c5 4.Lb5+ Ld7 5.Lxd7+ Dxd7 6.Sf3 Sc6 7.0-0
cxd4 8.Sxd4 Lc5 9.Sxc6 Dxc6 10.c3 Se7 11.Sd2 Sf5 12.Sf3 h6 13.Sd4
Lxd4 14.cxd4 Db6 15.Da4+ Dc6 16.Db4 a5 17.Dc3 0-0 18.g4 Se7
19.Dg3 Dc2 20.Da3 Sc6 21.Le3 De4 22.f3 Dg6 23.Tf2 Sb4 24.Db3 Tfc8
25.Td1 Tc2 26.a3 Txf2 27.Kxf2 Dc2+ 28.Dxc2 Sxc2 29.Tc1 Sxe3
30.Kxe3 b5 31.Tc5 Tb8 32.Kd3 a4 33.Kc3 f6 34.f4 g5 35.f5 exf5
36.gxf5 fxe5 37.dxe5 Tf8 38.f6 Kf7 39.Kd4 Td8 40.Txb5 g4 41.Tb7+
Ke6 42.Th7 Tb8 43.Te7+ Kf5 44.f7 Tf8 45.e6 Kf6 46.Te8 1-0

(96) Kaland,Joachim – Möller,Peter [C41]

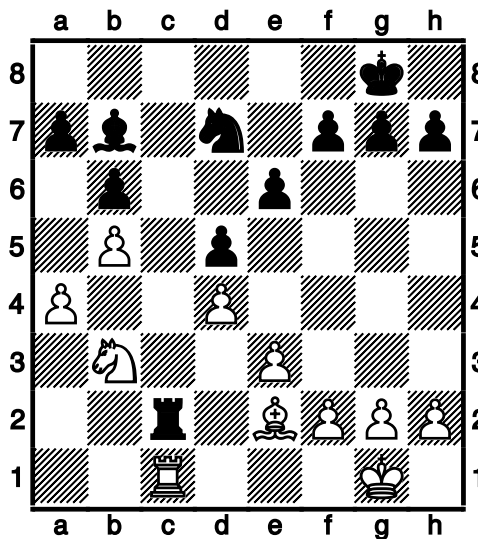
1.e4 e5 2.Sf3 d6 3.d4 exd4 4.Sxd4 Le7 5.Ld3 Sf6 [Fritz 9 (30s):
'letzter Buchzug']
6.0-0 Le6 7.Sc3 Sbd7 8.f4 [8.Sxe6 fxe6 9.Lc4 e5+-]
8...Sc5 9.Sf3 [9.Sxe6!? Sxe6 10.Le3±]
9...c6 10.Kh1 [10.Le3 0-0±]
10...Sxd3 11.cxd3 0-0 12.f5 [Fritz 9 (30s): 'Weiß will den Gegner
einengen']
12...Lc8 13.Lg5 Sg4 14.Lxe7 Dxe7 15.Dd2 f6 16.Tad1 b6 17.Se2
[17.d4 La6 18.Tfe1 Dd7±]
17...Lb7 18.Df4 [18.Sfd4 Tf7±]
18...Sh6 19.Sg3 [19.Sfd4 Tfe8 20.Tf3 De5±]
19...Sf7 20.Tfe1 [20.Sd4 Sd8±]
20...Tfe8 21.Sh5 Se5 22.Sd4 Df7 [Fritz 9 (30s): 'Schwarz droht
Materialgewinn: Df7xh5']
23.Dh4 Lc8 24.Te3 Kh8 25.Tg3 Tg8 26.Sf4 Ld7 27.Dxh7+ ['!!' Fritz 9
(30s). Fritz 9 (30s): 'Zerstörung der Bauerndeckung']
27...Kxh7 [Fritz 9 (30s): 'Hinlenkung nach h7']
28.Th3+ [Fritz 9 (30s): 'Die schönsten Kombinationen sind die,
welche zum Matt führen']

28...Dh5 29.Txh5#

1-0

(97) Lüttig,Hendrik – Möller,Peter [A00]

1.b4 d5 2.Lb2 e6 3.e3 Sf6 4.b5 b6 5.Sf3 Ld6 6.c4 dxc4 7.Lxc4 Lb7
8.a4 0-0 9.0-0 Sbd7 10.La3 Te8 11.d4 De7 12.Lxd6 cxd6 13.Sbd2 d5
14.Le2 Tec8 15.Tc1 Txc1 16.Dxc1 Tc8 17.Db2 Dd6 18.Se5 Dc7
19.Sxd7 Sxd7 20.Sb3 Dc2 21.Dxc2 Txc2 22.Tc1



22...Txc1+ 23.Sxc1 e5 24.Sa2 f5 25.Sb4 e4 26.Sc6 Kf8 27.Sxa7 Sb8
28.g4 g6 29.Kg2 Ke7 30.Kg3 fxg4 31.Lxg4 Kd6 32.Sc8+ Lxc8 33.Lxc8
Kc7 34.Lg4 h5 35.Le6 Kd6 36.Lf7 Sd7 37.Lxg6 Sf6 38.h3 Ke7 39.Kh4
1-0

(98) Kronhof,Holger – Kaland,Joachim [C01]

B-Gruppe (4), 03.11.2005

1.e4 e6 2.d4 d5 3.exd5 exd5 4.Sc3 Sf6 5.Sf3 Ld6 6.Le2 0-0 7.0-0 Te8
8.Te1 Sbd7 9.Lf1 c6 10.Txe8+ Dxe8 11.De2 h6 12.Dxe8+ Sxe8 13.Le3
Sb6 14.Te1 Lf5 15.Tc1 Sf6 16.Se1 Te8 17.Ld3 Lxd3 18.Sxd3 Sc4
19.Sd1 Sg4 20.Lf4 Lxf4
0-1

(99) Schmoll,Peter – Fladda,Walter [A00]

0-1

(100) Sengbusch, Gerhard – Mungard, Jens-Uwe [C46]

1.e4 e5 2.Sc3 Sc6 3.Sf3 d6 4.Lc4 Sa5 5.Le2 Le6 6.b4 Sc6 7.Lb5
Sge7 8.Sg5 Ld7 9.Lc4 d5 10.exd5 Sxd5 11.Sxd5 Le6 12.Sxe6 fxe6
13.Sc3 Lxb4 14.Se4 Dd4 15.De2 Dxa1 16.0-0 Db1 17.c3 Le7 18.Lxe6
Tf8 19.La3 Db6 20.Lxe7 Sxe7 21.Lb3 Dg6 22.Lc2 Sf5 23.Db5+ Dc6
24.Dxe5+ Kd8 25.Sg5 Sh4 26.Dd4+ Dd6 27.Dxh4 Tf4 28.Se6+
1-0

(101) Mungard, Jens-Uwe – Lüttig, Hendrik [B06]

1.e4 g6 2.d4 Lg7 3.f4 d6 4.Sf3 c5 5.dxc5 Da5+ 6.Ld2 Dxc5 7.c3 Ld7
8.Db3 b6 9.Dd5 Lc6 10.Dxc5 dxc5 11.Ld3 Sf6 12.e5 Sd5 13.0-0 e6
14.Sa3 Se7 15.Sb5 Lxb5 16.Lxb5+ Sbc6 17.Le1 0-0 18.Lh4 a6 19.Ld3
f5 20.exf6 Lxf6 21.Lxf6 Txf6 22.g3 b5 23.Tfe1 h6 24.Le4 Tc8 25.Tad1
Kf8 26.Td6 a5 27.Lxc6 Txc6 28.Td8+ Kg7 29.Se5 Tc7 30.Td6 Sc8 [(=)]

31.Ta6 a4 32.Sg4 Tff7 33.Texe6 Se7 34.Se5 Tf8 35.Tad6 Tf5 36.Sxg6
Sxg6 37.Txg6+ Kf8 38.Txh6 Tff7 39.Kf2 b4 40.c4 Kg8 41.Kf3 b3
42.axb3 axb3 43.Tb6 Tb7 44.Thc6 Txb6 45.Txb6 Td7 46.Txb3 Td4
47.Tb8+ Kf7 48.b3 Ke7 49.Kg4 Kd7 50.Kg5 Kc7 51.Tb5 Kc6 52.h4
Td8 53.h5 Tg8+ 54.Kh4 Tf8 55.h6 Th8 56.Kh5 Tg8 57.g4 Te8 58.g5
Te2 59.f5 Te7 60.g6 Te5
1-0

(102) Fladda, Walter – Sengbusch, Gerhard [C24]

1.e4 e5 2.Lc4 Sf6 3.d3 c6 4.Lg5 Lc5 5.Df3 h6 6.Lxf6 Dxf6 7.Dxf6
gxf6 8.Sd2 Ke7 9.Sgf3 d6 10.Sb3 Lb6 11.a4 a6 12.d4 Tg8 13.Tg1 Sd7
14.c3 La7 15.Sh4 Sb6 16.Le2 Le6 17.Sf5+ Lxf5 18.exf5 Sd5 19.g3 Sf4
20.Kd2 Sxe2 21.Kxe2 Tg4 22.f3 Tg5 23.g4 Lb6 24.a5 La7 25.h4 Tg7
26.Kd3 Td8 27.Tae1 Kf8 28.c4 h5 29.Tg2 Th7 30.g5 fxg5 31.Txg5 Ke7
32.Teg1 f6 33.Tg7+ Txg7 34.Txg7+ Ke8 35.Txb7 Td7 36.Txd7 Kxd7
37.c5 Lb8 38.Sd2 d5 39.Sf1 exd4 40.b4 Le5 41.f4 Lxf4 42.Kxd4 Le5+
43.Kd3 Ke7

1/2-1/2

(103) Kaland,Joachim – Schmoll,Peter [B00]

1.e4 b6 2.f4 Lb7 3.Sc3 e6 4.Sf3 Lb4 5.d3 Sc6 6.Le2 Sge7 7.0-0 d5
8.e5 Lxc3 9.bxc3 0-0 10.d4 Dc8 11.Ld3 Sg6 12.h4 f5 13.exf6 Txf6
14.g3 Sce7 15.h5 Sh8 16.Sg5 Th6 17.g4 La6 18.Sf3 Lxd3 19.Dxd3 e5
20.Sxe5 Sf7 21.Dg3 Sd6 22.f5 Se4 23.Dh4 Tf6 24.Lg5 Sxg5 25.Dxg5
h6 26.Df4 c5 27.Tae1 Db7 28.Sg6 Te8 29.g5 hxg5 30.Dxg5 Dd7 31.h6
Sxg6 32.fxg6 Txe1 33.Txe1 Tf5 34.Dxf5 ['!!' Fritz 9 (30s). Fritz 9
(30s): 'elegant forcierte Entscheidung']
34...Dxf5 35.Te8+ Df8 36.h7+ Kh8 37.Txf8# 1-0

(104) Möller,Peter – Kronhof,Holger [B22]

1.e4 c5 2.c3 Sc6 3.Sf3 e6 4.d4 cxd4 5.cxd4 Lb4+ 6.Ld2 Db6 7.Lc3 d5
8.Sbd2 Sge7 9.Ld3 0-0 10.Dc2 f5 11.e5 Sg6 12.0-0 Ld7 13.a3 Le7
14.b4 a6 15.Sb3 Dc7 16.Dd2 b6 17.Tfc1 Dd8 18.Dd1 Sf4 19.Lf1 Sg6
20.Ld2 a5 21.b5 Sa7 22.a4 Tc8 23.Txc8 Dxc8 24.Tc1 Db7 25.Tc3 Tc8
26.Dc2 Txc3 27.Lxc3 Dc8 28.Dd2 Dd8 29.Le2 Sh4 30.Sxh4 Lxh4
31.g3 Lg5 32.f4 Lh6 33.De1 g5 34.fxg5 Dxg5 35.Ld2 Dg7 36.Lxh6
Dxh6 37.Df2 Dg6 38.Df3 Le8 39.Sc1 Dg5 40.Sd3 Sc8 41.Sf4 Lf7
42.Dc3 Dd8 43.Dc6 Sa7 44.Db7 Sc8 45.Lh5 Se7 46.h3 Kf8 47.Lxf7
Kxf7 48.Sh5 Dc8 49.Dxc8 Sxc8 50.Sf6 h6 51.Kf2 Ke7 52.Kf3 Sa7
53.g4 fxg4+ 54.Kxg4 Sxb5 55.Sg8+ Kf8 56.Sxh6 Kg7 57.Kg5 [unklare
Notation] $\frac{1}{2}$ - $\frac{1}{2}$

(105) Lüttig,Hendrik – Kronhof,Holger [A00]

B-Gruppe (6), 05.01.2005 $\frac{1}{2}$ - $\frac{1}{2}$

(106) Schmoll,Peter – Möller,Peter [C24]

1.e4 e5 2.Lc4 Sf6 3.d3 Le7 4.Sf3 d6 5.h3 c6 6.Sc3 Ld7 7.0-0 Dc8
8.Sg5 0-0 9.Df3 Le6 10.Le3 Lxc4 11.dxc4 h6 12.h4 hxg5 13.hxg5 Sh7
14.Dg3 De6 15.b3 Dg6 16.f4 exf4 17.Txf4 Lxg5 18.Tg4 Lxe3+ 19.Kh2
Lg5 20.Tf1 Dh6+ 21.Kg1 Le3+ 22.Tf2 Lxf2+ 23.Dxf2 Sd7 24.Se2 Sdf6
25.Th4 Dg6 26.Df4 Tad8 27.Sg3 Tfe8 28.Sf5 Te6 29.Sh6+ gxh6
30.Txh6 Dxe4 31.Dg3+ Dg4 32.Dd3 Se4 33.Th3 Tg6 34.Th2 Shg5
0-1

(107) Sengbusch, Gerhard – Kaland, Joachim [C00]

1.e4 e6 2.Lc4 d5 3.exd5 exd5 4.Lb3 Sf6 5.d4 Le7 6.Sc3 0-0 7.Sf3
Lg4 8.0-0 c6 9.h3 Lh5 10.Te1 Te8 11.Lf4 Sbd7 12.Dd2 Lxf3 13.gxf3
Sh5 14.Le5 Lg5 15.f4 Sxe5 16.dxe5 Sxf4 17.Dd4 Dd7 18.Te3 Sxh3+
19.Kh2 Lf4+ 20.Tg3 Lxg3+ 21.Kxg3 Sg5 22.Th1 Df5 23.f4 Se4+
24.Sxe4 dxe4 25.Td1 h5 26.Dd7 Dg6+ 27.Kh4 Tad8 28.Lxf7+ Dxf7
29.Dxf7+ Kxf7 30.Tg1 g6 31.c3 Td3 32.Te1 e3 33.Te2 Ke6 34.Tg2 Tg8
35.Te2 Tf8 36.Kg5 Tf5+ 37.Kxg6 Txf4 38.Kxh5 Tf2

0-1

(108) Mungard, Jens-Uwe – Fladda, Walter [A00]

B-Gruppe (6), 05.01.2005

1-0

(109) Fladda, Walter – Lüttig, Hendrik [B06]

B-Gruppe (7), 01.12.2005

1.e4 g6 2.d4 d6 3.Lc4 Lg7 4.Le3 Sf6 5.Sc3 0-0 6.Sge2 a6 7.a3 b5
8.La2 Lb7 9.d5 Sbd7 10.0-0 c5 11.Sg3 Lc8 12.Dd2 Sb6 13.Lh6 Sg4
14.Lxg7 Kxg7 15.h3 Sh6? 16.Dg5? Sg8 17.Tae1 e6 18.Sh5+ Kh8
19.Dxd8 Txd8 20.Sf4 e5 21.Sfe2 Ta7 22.f4 f6 23.Tf3 Te7 24.Tef1 Sd7
25.Sg3 exf4 26.Txf4 Se5 27.T4f2 Ld7 28.Sge2 Tc8 29.g4 b4 30.Sb1
La4 31.b3 Lb5 32.a4 Ld7 33.Kg2 Sf7 34.Sd2 Se5 35.Sc4 Sxc4
36.bxc4 Lxa4 37.Sg3 Ld7 38.Lb3 a5 39.Ta1 Ta8 40.La4 Lxa4 41.Txa4
Tb7 42.Tf3 Kg7 43.Se2 Sh6 44.Sf4 Kf7 45.Se6 Ke7 46.g5 ffg5
47.Sxg5 Ke8 48.Tf6 Td7 49.Te6+ Kf8 50.Ta1 a4 51.Tf1+ Kg8 52.Sf3 a3
53.e5 Sf5 54.Te1 a2 55.Ta1 Se3+ 56.Kg3 Sxc2 57.Txa2 Txa2 58.Te8+
Kf7 59.Th8 Kg7 60.Te8 dxe5 61.Sxe5 Ta3+ 62.Kh4 Te3 63.Te6 Sd4
64.Sxd7 Sxe6 65.dxe6 Txe6 66.Sxc5 Tc6 67.Sa4 Txc4+ 68.Kg3 Kf6
69.h4 h5 70.Sb6 Tg4+ 71.Kh3 Ke5 72.Sa4 Kd4 73.Sb2 Kc3 74.Sd1+
Kd2 75.Sb2 b3 76.Kh2 Kc2 77.Kh3 Kxb2 78.Kh2 Kc2

0-1

Pinneberger Winterturnier 2005

(110) Kaland,Joachim – Mungard,Jens-Uwe [C41]

1.e4 e5 2.Sf3 d6 3.d4 exd4 4.Sxd4 Ld7 5.Lc4 Sc6 6.c3 Sf6 7.0-0 Le7
8.f3 0-0 9.Kh1 h6 10.Le3 Sa5 11.Ld3 c5 12.Se2 Sc6 13.f4 Dc7 14.h3
a6 15.Sd2 b5 16.Tc1 Tad8 17.Sg3 Tfe8 18.Lb1 Dc8 19.f5 Lf8 20.Sh5
Sxh5 21.Dxh5 f6 22.Tf3 Te7 23.Tg3 Kh8 24.Tf1 Le8 25.De2 Lf7 26.b3
Se5 27.c4 b4 28.Sf3 Le8 29.Sh4 Kh7 30.Sf3 [nach 20 Minuten
Nachdenken. Ich dachte Sg6 geht wohl doch nicht. Fritz hat mich
eines Besseren belehrt !!]

[30.Sg6 Sxg6 31.fxg6+ Lxg6 32.Txg6 Kxg6 33.e5+ Kf7 34.Dh5+ Kg8
(34...Ke6 35.Lf5+ Kxe5 36.Df3 Dxf5 37.Dd5#) 35.Dg6 f5 (35...dxe5
36.Dh7+ Kf7 37.Txf6+ Kxf6 38.Dg6#) 36.Lxf5 Dxf5 (36...Dc6 37.Dh7+
Kf7 38.Ld7+ Df3 39.Txf3#) 37.Txf5 Txe5 38.Txe5 dxe5]

30...Lh5 31.Df2 Le8 [(=)]

32.Sh4 Db7 33.Sg6 [Jetzt geht es, dachte ich, weil meine Dame
besser steht. Tatsächlich steht sie auf einem schlechteren Feld.]

33...Sxg6 34.fxg6+ Kh8 [34...Lxg6 35.Txg6 Kxg6 36.e5+ Kf7 37.exf6
Txe3 (37...gxf6 38.Dxf6+ Kg8 39.Lxh6 Lxh6 40.Dxh6 Tg7 41.De6+)
38.fxg7+ Kxg7 39.Dxe3]

35.Lxh6 [△35.e5 Txe5 36.Lxh6 gxh6 37.Dxf6+ Lg7 38.Dxd8]

35...gxh6 36.Dxf6+ Lg7 37.Dh4 Lc6 38.Tf7 Tde8 39.Txe7 Dxe7
40.Dxe7 Txe7 41.Tg4 Le5 42.h4 Ld7 43.g7+ Txg7 44.Txg7 Kxg7
45.Ld3 Lg3 46.h5 Lg4 47.Kg1 Lxh5 48.Kf1 Kf6 49.Le2 Lg6 50.Ld3
Ke5 51.Ke2 Lxe4 [51...Lxe4 52.Lxe4 Kxe4 53.Kd2 Lf4+ 54.Ke2 h5
55.Kf2 Kd3 56.Kf3 Le5 57.Kf2 Kc2 58.Ke1 Kb1] 0-1

(111) Möller,Peter – Sengbusch,Gerhard [C50]

B-Gruppe (7), 27.10.2005

1.e4 e5 2.Sf3 Sc6 3.Lc4 a6 4.c3 h6 5.d4 exd4 6.cxd4 De7 7.Sc3 Sf6
8.e5 Sa5 9.Le2 Sg8 10.Ld2 d6 11.Sd5 Dd8 12.Lxa5 b6 13.Lc3 dxe5
14.dxe5 Lb7 15.Se3 De7 16.0-0 Td8 17.Db3 b5 18.Tad1 Txd1 19.Txd1
b4 20.Ld2 Dc5 21.Da4+ c6 22.Lxa6 Db6 23.Lxb7 Dxb7 24.Sd5 Lc5
25.Lxb4 Lxb4 26.Sxb4 Se7 27.Db3 0-0 28.Dc3 Tc8 29.Dc5 Sd5
30.Sxd5 cxd5 31.Da3 Tc2 32.Db3 Dc7 33.g3 Dc5 34.Sd4 Tc1 35.Dd3
Txd1+ 36.Dxd1 Kf8 1-0

(112) Kronhof,Holger – Schmoll,Peter [A00]

½-½

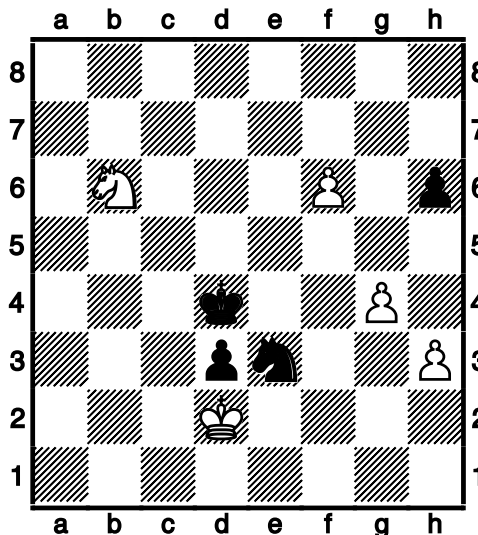
C-Gruppe

(113) Stoephasius,Christian – Dammann,Rudolf [C50]

1.e4 e5 2.Sf3 Sc6 3.Lc4 Lc5 4.Sc3 Sf6 5.Sxe5 Sxe5 6.d4 Sxc4 7.dxc5
d6 8.De2 Se5 9.cxd6 cxd6 10.Lg5 h6 11.Lh4 Lg4 12.Db5+ Dd7
13.Lxf6 gxf6 14.0-0 0-0-0 15.f4 Sc6 16.Tae1 a6 17.Db3 Thg8 18.g3
Sa5 19.Da3 Sc4 20.Db4 Sd2 21.Sd5 Sf3+ 22.Txf3 Lxf3 23.Sb6+ Kb8
24.Sxd7+ Txd7 25.Dc3 Lg4 26.Dxf6 Tg6 27.Dd4 Tg8 28.Kg2 Tc8 29.c4
Le6 30.b3 f5 31.exf5 Lxf5 32.Df6 Lh7 33.Dxh6 d5 34.De6 Tdd8
35.cxd5 Tc2+ 36.Te2 Txe2+ 37.Dxe2 Txd5 38.De8+ Ka7 39.Kf3 Lb1
40.De3+ Ka8 41.De2 Ta5 42.a4 Td5 43.b4 1-0

(114) Lösekamm,Heinrich – Retzlaff,Jennifer [C50]

1.e4 e5 2.Sf3 Sc6 3.Lc4 h6 4.a3 Sf6 5.d3 d6 6.h3 Le6 7.Lxe6 fxe6
8.Ld2 De7 9.Sc3 0-0-0 10.0-0 d5 11.exd5 exd5 12.b4 a6 13.Te1 d4
14.Se4 Sxe4 15.Txe4 Df6 16.Db1 g5 17.Sh2 Le7 18.b5 Sb8 19.bxa6
Dxa6 20.Txe5 Lxa3?? 21.Db3 Dd6 22.De6+?? Dxe6 23.Txe6 Ld6
24.Sf3 Lf4 25.Lxf4 gxf4 26.Te4 Sc6 27.Txf4 The8 28.Ta8+ Sb8
29.Kf1? c5 30.Sd2 Td6 31.Te4 Tde6 32.Txe6 Txe6 33.Se4 b6 34.f4
Kb7 35.Ta1 Sa6 36.c3 dxc3 37.Sxc3 Te3 38.Td1 c4 39.Sd5 Txd3
40.Txd3 cxd3 41.Ke1 Kc6 42.Se3 Sb4 43.Kd2 Kc5 44.f5 Kd6 45.g4
Ke5 46.Sc4+ Kd4 47.Sxb6 Sc2 48.f6 Se3



49.f7 Sf1+ 50.Kd1 Se3+ 51.Kc1 Kc3 52.Sd5+?? Sxd5 53.f8D d2+
54.Kd1 Se3+ 55.Ke2 d1D+ 56.Kf2 Df1+ 0-1

(115) Schleu, Günther – Schäfer, Hans [D02]

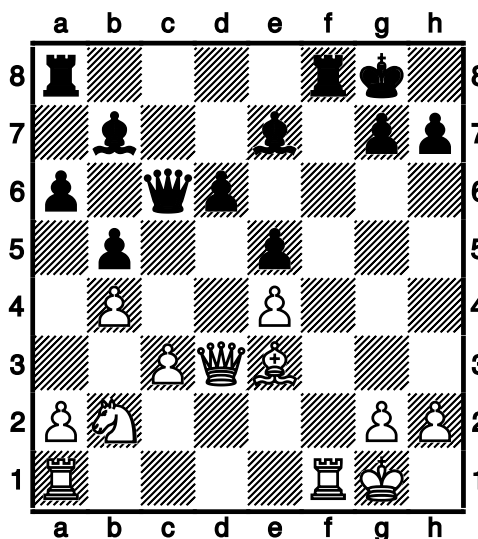
1.d4 d5 2.Sf3 e5 3.Sxe5 f6 4.Sf3 Lg4 5.Sbd2 Lb4 6.c3 Ld6 7.e3 Se7
8.Le2 Lxf3 9.Sxf3 0-0 10.Dc2 c5 11.0-0 c4 12.Te1 Sg6 13.e4 Lf4
14.exd5 Dxd5 15.Da4 Dd6 16.Lxc4+ Kh8 17.Te8 Sc6 18.Txa8 Txa8
19.Lxf4 Dxf4 20.Te1 Sh4 21.Sxh4 Dxh4 22.Dc2 Tf8 23.Te3 Dg5
24.De2 Dg6 25.Ld3 Df7 26.b3 g6 27.Lc4 Dd7 28.Le6 Dd8 29.Lg4 f5
30.Lf3 Sb8 31.Lxb7 f4 32.Te7 Sd7 33.Lc6 Sf6 34.De5 Dc8 35.d5 Df5
36.Dxf5 gxf5 37.f3 Sg8 38.Te8 Kg7 39.Txf8 Kxf8 40.Ld7 Se7 41.Le6
h6 42.Kf2 Kg7 43.c4 Kf6 44.Ke2 Ke5 45.Kd3 Sg6 46.Ke2 Sf8 47.Kd3
Sg6 48.Ke2 Sf8 49.a4 Sxe6 50.dxe6 Kxe6 51.Kd3 Kd6 52.Kd4 a5
53.h4 Kc6 54.c5 h5 55.Kc4 1-0

(116) Zedler, Ernst – von Hohenthal, Ludwig [C60]

1.e4 e5 2.Sf3 Sc6 3.Lb5 Sge7 4.0-0 d6 5.h3 h6 6.Te1 Ld7 7.d4 exd4
8.Sxd4 a6 9.Sxc6 Sxc6 10.La4 Le7 11.c3 0-0 12.Sd2 b5 13.Lc2 Lg5
14.Sf3 Lxc1 15.Dxc1 Se5 16.Sxe5 dxe5 17.De3 De7 18.b4 Le6 19.Ld3
c6 20.Te2 Kh8 21.Td1 Tfd8 22.Ted2 Td7 23.Le2 Tad8 24.Lg4 Txd2
25.Txd2 Ta8 26.Lxe6 Dxe6 27.De2 Dc8 1/2-1/2

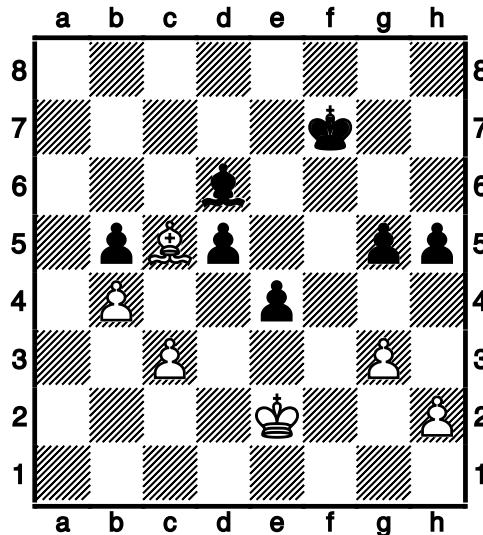
(117) Schäfer, Hans – Zedler, Ernst [B21]

1.e4 c5 2.d4 cxd4 3.Dxd4 Sc6 4.Dd1 e6 5.Ld3 b6 6.Sf3 Le7 7.0-0 Lb7
8.c3 d6 9.Le3 Sf6 10.Sbd2 0-0 11.b4 a6 12.Sc4 Sd7 13.Dd2 b5 14.Sb2
Sce5 15.Sxe5 Sxe5 16.f4 Sxd3 17.Dxd3 Dc7 18.f5 Dc6 19.fxe6 fxe6
20.Ld4 e5 21.Le3



Pinneberger Winterturnier 2005

21...Dxe4 22.Dxe4 Lxe4 23.Txf8+ Txf8 24.Tf1 Txf1+ 25.Kxf1 d5 26.a4
Lf5 27.axb5 axb5 28.g3 e4 29.Ld4 Ld6 30.Ke2 Kf7 31.Sd1 Lg4+
32.Kd2 Lxd1 33.Kxd1 g5 34.Ke2 h5 35.Lc5



35...Le5 36.Ld4 Ke6 37.Ke3 Kf5 38.Lxe5 Kxe5 39.h3 h4 40.g4 Kd6
41.Kd4 Ke6 42.Ke3 Ke5 43.Ke2 Kf4 44.Kf2 e3+ 45.Ke2 Ke4 46.Ke1
Kd3 47.Kd1 Kxc3 48.Ke2 d4 49.Kd1 d3 50.Kc1 e2 0-1

(118) Retzlaff, Jennifer – Schleu, Günther [B50]

1.e4 c5 2.Sf3 d6 3.Sc3 Sd7 4.d3 Sgf6 5.Lg5 e6 6.d4 cxd4 7.Dxd4
Le7 8.Lc4 d5 9.exd5 exd5 10.Lxd5 0-0 11.Dc4 Sxd5 12.Dxd5 Lxg5
13.Sxg5 De7+ 14.Sge4 Sf6 15.Dd6 Te8 16.0-0-0 Sxe4 17.Dxe7 Le6
18.Db4 Sxf2 19.The1 Sxd1 20.Sxd1 b6 21.Sc3 Tac8 22.Sb5 Tc4
23.Da3 Tec8 24.c3 a5 25.Sd6 1-0

(119) Dammann, Rudolf – Lösekamm, Heinrich [C26]

1.e4 e5 2.Sc3 Sf6 3.Lc4 c6 4.a4 d5 5.Lb3 Le6 6.d4 a6 7.exd5 cxd5
8.Lg5 Le7 9.f3 e4 10.Sh3 h6 11.Lxf6 Lxf6 12.Sf4 0-0 13.fxe4 dxe4
14.Lxe6 Dxd4 15.Dxd4 Lxd4 16.Ld5 Lxc3+ 17.bxc3 Kh8 18.0-0 Sc6
19.Tae1 Tae8 20.Lxe4 Te5 21.Lxc6 Txe1 22.Txe1 bxc6 23.Te7 Kg8
24.Tc7 Td8 25.Txc6 Td2 26.Txa6 Txc2 27.Sd5 Te2 28.Kf1 Te6 1-0

Pinneberger Winterturnier 2005

(120) Schmidt,Günther – Stoephasius,Christian [C42]

1.e4 e5 2.Sf3 Sf6 3.Sxe5 De7 4.d4 d5 5.exd5 Sxd5 6.Le2 Lf5 7.0-0 c5
8.Te1 a6 9.Ld3 Le6 10.c3 g6 11.c4 Dd6 12.cxd5 Dxd5 13.dxc5 Lxc5
14.Lc4 Dd4 15.Dxd4 Lxd4 16.Lxe6 fxe6 17.Sf3 1-0

(121) Sagitov,Kamil – von Hohenthal,Ludwig [D00]

1.d4 d5 2.Sc3 e6 3.Sf3 Le7 4.Lf4 Ld7 5.e4 dxe4 6.Sxe4 Sf6 7.Ld3
Lc6 8.De2 a6 9.0-0-0 h6 10.c3 Sbd7 11.Le5 0-0 12.h3 b5 13.Kb1 Sh7
14.h4 Lf6 15.Lf4 Le7 16.g4 Shf6 17.g5 Sd5 18.Ld2 h5 19.Thg1 g6
20.Lc2 Kh8 21.c4 bxc4 22.Dxc4 Lb5 23.Db3 S7b6 24.Se5 La4 25.Df3
Lxc2+ 26.Kxc2 De8 27.Kb1 Kg7 28.Tc1 Db5 29.Sc3 Sxc3+ 30.Lxc3
Sd5 31.Tgd1 Ld6 32.Sd3 a5 33.Tc2 Tab8 34.Ka1 Kh7 35.Ld2 Kg8
36.De4 Sb4 37.Sxb4 axb4 38.b3 Ta8 39.Le3 Ta6 40.Tc4 Tfa8 41.Td2
Ta3 42.Db1 Dd5 43.Dd1 Df5 44.Tc1 e5 45.Tc4 exd4 46.Lxd4 Le5
47.Txb4 Lxd4+ 48.Tbxd4 c5 49.Tc4 De5+ 50.Kb1 Tb8 51.Dc2 Tba8
52.De4 Txb3+ 53.axb3 Ta1+ 54.Kc2 Ta2+ 55.Kd1 Da1+ 56.Ke2 Ta6
57.Kf3 Dh1+ 58.Kg3 Dg1+ 59.Dg2 De1 60.Tdc2 Te6 61.Txc5 Te4
62.T5c4 Te3+ 63.Kh2 Td3 64.Te4 Da5 65.b4 Da8 66.Tce2 Db8+
67.Kh1 Kg7 68.Dh2 Td1+ 69.Te1 Txe1+ 70.Txe1 Dxb4 71.De5+ Kh7
72.Te4 Db1+ 73.Kg2 Db7 74.Dd4 Da8 75.Da4 Dd5 76.Dc4 Db7 77.Kh2
Db8+ 78.Tf4 Kh8 79.Dxf7 1-0

(122) Lösekamm,Heinrich – Schmidt,Günther [C00]

C-Gruppe (3), 03.11.2005

1.e4 e6 2.Lc4 d5 3.exd5 exd5 4.Ld3 Ld6 5.h3 Sf6 6.Sf3 0-0 7.0-0 Te8
8.Te1 Le6 9.Sd4 Ld7 10.Sc3 c6 11.Lf5 Lc5 12.Lxd7 Txe1+ 13.Dxe1
Sbxd7 14.Sf3 Dc7 15.d4 Ld6 16.Lg5 Te8 17.Dd2 h6 18.Lxf6 Sxf6
19.Te1 Txe1+ 20.Dxe1 b5 21.Se2 a5 22.a3 a4 23.c3 Db8 24.Sg3 Lxg3
25.fxg3 Se4 26.Se5 Dc7 27.De3 f6 28.Sg6 Db8 29.Df4 De8 30.Dg4
Kh7 31.Sf4 Sd6 32.De6 Dxe6 33.Sxe6 Sc4 34.Sd8 Sxb2 35.Sxc6 Sc4
36.Sb4 Sb6 37.Kf2 Kg6 38.g4 Kf7 39.Ke3 Ke6 40.h4 g5 41.hxg5 hxg5
42.Kf3 Sc4 43.Sc2 Kd6 44.Ke2 Sb2 45.Sb4 Ke6 46.Kf3 Sd1 47.Sa2
Sb2 48.Sb4 $\frac{1}{2}$ - $\frac{1}{2}$

Pinneberger Winterturnier 2005

(123) Schleu, Günther – Dammann, Rudolf [A43]

1.d4 c5 2.c3 c4 3.e4 d5 4.Sd2 e6 5.Sgf3 h5 6.Le2 Sc6 7.e5 f6 8.exf6
Dxf6 9.Sf1 Le7 10.Dc2 Sh6 11.Lg5 Df7 12.Lxe7 Sxe7 13.Se5 Df5
14.Dxf5 Shxf5 15.Sg3 h4 16.Sh5 Ld7 17.Sf4 g5 18.Lh5+ Txf5
19.Sxh5 0-0-0 20.Sf6 La4 21.h3 Tf8 22.Sfg4 b5 23.0-0 a5 24.b3 cxb3
25.axb3 Lxb3 26.Txa5 Kc7 27.Tfa1 Tb8 28.Ta7+ Kd8 29.T1a6 b4
[unklare Notation] 1-0

(124) Zedler, Ernst – Retzlaff, Jennifer [A00]

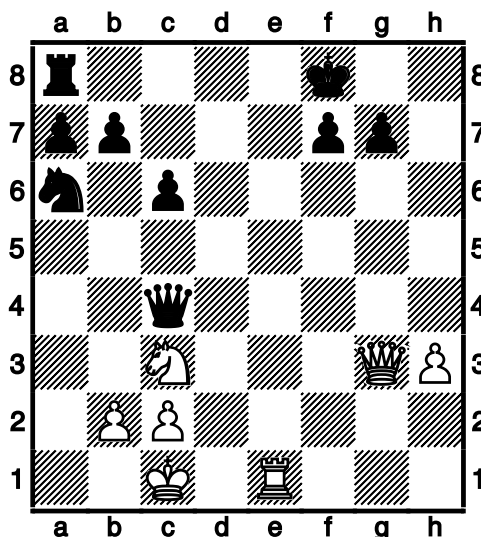
C-Gruppe (3), 02.01.2005 1-0

(125) von Hohenthal, Ludwig – Schäfer, Hans [C41]

1.e4 e5 2.Sf3 d6 3.d3 Le7 4.Le3 Lg4 5.Sbd2 Sf6 6.Le2 h5 7.h3 Lxf3
8.Lxf3 g6 9.g4 h4 10.Lg2 Sbd7 11.Sf3 c5 12.Dd2 Sh7 13.0-0 g5
14.Tfb1 a5 15.a3 b5 16.c3 c4 17.b4 cxb3 18.Txb3 Db8 19.c4 b4
20.Sxg5 Sxg5 21.Lxg5 f6 22.Le3 Kf7 23.f3 Tg8 24.Kh2 Tg5 25.Lxg5
fxg5 0-1

(126) Stoephasius, Christian – Sagitov, Kamil [C41]

1.e4 e5 2.Sf3 d6 3.Sc3 Sf6 4.d4 exd4 5.Sxd4 Lg4 6.Le2 Dd7 7.h3 Le6
8.Lg5 Le7 9.f4 Dc8 10.Lf3 h6 11.Lh4 c6 12.g4 Sa6 13.De2 Ld7 14.e5
dxe5 15.Dxe5 Dc7 16.De3 Dd6 17.g5 Sg8 18.gxh6 Txf6 19.Lxe7 Sxe7
20.0-0-0 Dc5 21.The1 Le6 22.f5 Sxf5 23.Sxf5 Dxf5 24.Se4 Kf8 25.Lg4
Da5 26.Lxe6 Txe6 27.Dg3 Dxa2 28.Sc3 Txe1 29.Txe1 Dc4



Pinneberger Winterturnier 2005

30.Se4 Sb4 31.Dd6+ Kg8 32.Sf6+ gxf6 33.Tg1+ Kh7 34.c3 Sd5 35.Dd7
Df4+ 36.Kb1 De4+ 37.Ka1 De6 38.Dxe6 fxe6 0-1

(127) Dammann,Rudolf – Zedler,Ernst [B20]

1.e4 c5 2.Lc4 e6 3.e5 Sc6 4.Sf3 b6 5.c3 d5 6.exd6 Lxd6 7.d3 h6 8.0-
0 Sge7 9.Sbd2 Sg6 10.Se4 Le7 11.Lb5 Ld7 12.a3 0-0 13.La6 Dc7
14.b4 Lc8 15.Lxc8 Taxc8 16.b5 Sce5 17.Lb2 Tcd8 18.d4 Sxf3+
19.Dxf3 f5 20.Sg3 Lf6 21.Tfe1 Tfe8 22.Tad1 cxd4 23.cxd4 Dd7 24.Db3
Dd5 25.Dxd5 Txd5 26.Sh5 Lg5 27.f4 Sxf4 28.Sxf4 Lxf4 29.g3 Lg5
30.Te5 Kf7 31.Kf2 Lf6 32.Txd5 exd5 33.Tc1 Te7 34.a4 Te4 35.Td1 g5
36.h3 Te7 37.Tc1 h5 38.Kf3 Kg6 39.Tc6 Kf7 40.Td6 g4+ 41.hxg4
hxg4+ 42.Kf2 Tc7 $\frac{1}{2}$ - $\frac{1}{2}$

(128) Schmidt,Günther – Schleu,Günther [B51]

1.e4 c5 2.Sf3 d6 3.Lb5+ Sd7 4.d4 Da5+ 5.Sc3 a6 6.Le2 Sgf6 7.0-0
cxd4 8.Sxd4 b5 9.Sb3 Dc7 10.Lf3 Lb7 11.a3 Se5 12.Sd5 Sxf3+
13.Dxf3 Sxd5 14.exd5 Dxc2 15.Sa5 Dc7 16.Sxb7 Dxb7 17.Te1 g6
18.Dc3 Tg8 19.Dd3 Tc8 20.Lf4 Kd7 21.Dh3+ Ke8 22.Lxd6 Td8
23.Dxh7 Tg7 24.Txe7+ Lxe7 25.Dxg7 Txd6 26.Te1 Dxd5 27.Dg8+ Kd7
28.g3 Df5 29.Da8 Ld8 30.Db7+ Lc7 31.Tc1 Td2 32.Dxc7+ Ke8
33.Dc8+ Ke7 34.Te1+ Kf6 35.Dh8+ Kg5 36.h4+ Kg4 37.Tf1 Kh3
38.Dc3 Dd5 39.Dc8+ f5 40.f3 Dd4+ 0-1

(129) Stoephasius,Christian – Lösekamm,Heinrich [A00]

C-Gruppe (4), 03.01.2005 $\frac{1}{2}$ - $\frac{1}{2}$

(130) Sagitov,Kamil – Schäfer,Hans [D03]

1.d4 d5 2.Sc3 Sf6 3.Sf3 e6 4.Lg5 Lb4 5.Dd3 0-0 6.a3 Lxc3+ 7.bxc3
h6 8.Lh4 Sbd7 9.e3 c5 10.dxc5 Sxc5 11.Dd4 b6 12.Ld3 Sxd3+
13.cxd3 g5 14.Lg3 Sh5 15.0-0 f5 16.Le5 g4 17.Sd2 Ld7 18.c4 Lc6
19.Tfc1 Dg5 20.Sb3 f4 21.Ld6 fxe3 22.Lxf8 Txf8 23.Dxe3 Df6 24.d4
dxc4 25.Txc4 Ld5 26.Tc3 Sf4 27.g3 Sh3+ 28.Kf1 Dxf2+ 29.Dxf2 Txf2+
30.Ke1 Txh2 31.Tac1 Th1+ 32.Kd2 Th2+ 33.Ke3 Lxb3 34.Txb3 Tg2

Pinneberger Winterturnier 2005

35.Ke4 Sg5+ 36.Kf4 Td2 37.Kxg4 Txd4+ 38.Kh5 Kg7 39.Tc7+ Sf7
40.Txa7 Td5+ 41.Kh4 b5 42.Tb7 Kf6 43.T7xb5 Td4+ 44.Kh3 Sg5+
45.Kg2 h5 46.Tb2 e5 47.T5b4 Td3 48.a4 e4 49.Tb6+ Kf5 50.Tf2+ Sf3
51.a5 Kg4 52.Tg6+ Kf5 53.Tg8 Ke6 54.a6 Ta3 55.Ta8 Se1+ 56.Kh3 e3
57.Te2 Sf3 58.Te8+ Kd7 59.T2xe3 Txa6 60.T8e7+ Kd8 61.Th7 Sg5+
62.Kh4 Sxh7 63.Kxh5 Ta5+ 64.Kh4 Sf6 $\frac{1}{2}$ - $\frac{1}{2}$

(131) Schleu,Günther – Stoephasius,Christian [D02]

1.d4 d5 2.Sf3 Sc6 3.Lf4 Lf5 4.a3 Sf6 5.h3 h5 6.e3 a6 7.Sbd2 e6 8.Le2
Ld6 9.Se5 Se7 10.b4 Se4 11.Lxh5 Lxe5 12.Lxe5 Th7 13.Sxe4 Lxe4
14.Lf3 Lxf3 15.Dxf3 f6 16.Lg3 Sc6 17.0-0 De7 18.Tac1 e5 19.dxe5
Sxe5 20.Dxd5 c6 21.Dg8+ 1-0

(132) Zedler,Ernst – Schmidt,Günther [B33]

1.e4 c5 2.Sf3 Sc6 3.d4 cxd4 4.Sxd4 Sf6 5.Sc3 e5 6.Sb3 Lb4 7.Ld3
Lxc3+ 8.bxc3 a6 9.c4 b6 10.0-0 d6 11.f3 h6 12.c3 a5 13.a4 0-0 14.Dd2
Sh5 15.Db2 f5 16.g3 f4 17.g4 Sf6 18.Td1 Le6 19.Le2 Ta7 20.Dd2 Td7
21.La3 Se8 22.De1 Se7 23.Td2 Dc7 24.Df1 Lxc4 25.Lxc4+ Kh8 26.Dd3
Da7 27.Kg2 Tf6 28.Tc1 Sg6 29.Kh3 Db7 30.Dd5 Se7 31.Dd3 Dc8
32.Lb5 Td8 33.Dc4 Dxc4 34.Lxc4 Tc8 35.Lb5 Sg6 36.Lxe8 Txe8
37.Lxd6 Td8 38.La3 Txd2 39.Sxd2 Tc6 40.c4 Kh7 41.c5 bxc5 42.Txc5
Txc5 43.Lxc5 Sh8 44.Sc4 Sf7 45.Sxa5 Sg5+ 46.Kg2 Kg6 47.Sc6 Sf7
48.a5 h5 49.h3 hxg4 50.hxg4 1-0

(133) von Hohenthal,Ludwig – Dammann,Rudolf [C26]

1.e4 e5 2.d3 Lc5 3.Sf3 Sc6 4.Le2 d6 5.h3 h6 6.Ld2 Sf6 7.Lc3 0-0
8.a3 a6 9.0-0 De7 10.Sfd2 d5 11.exd5 Sxd5 12.Se4 Sxc3 13.Sbxc3
Td8 14.Sxc5 Dxc5 0-1

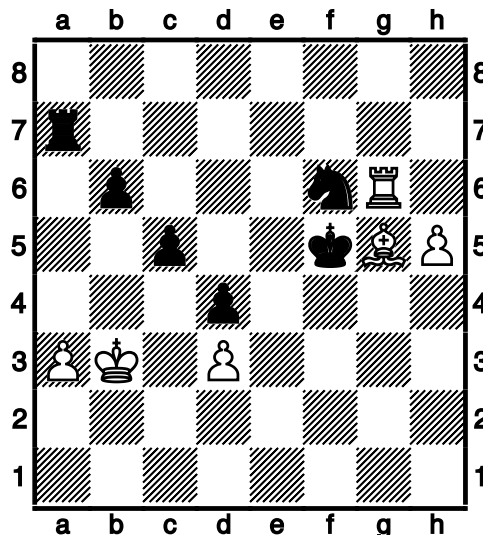
Pinneberger Winterturnier 2005

(134) Schäfer,Hans – Retzlaff,Jennifer [A00]

1.a3 e5 2.e4 Sf6 3.d3 Sc6 4.Lg5 Le7 5.Sf3 d6 6.Sbd2 Sd4 7.c3 Se6
8.Lxf6 Lxf6 9.Le2 Sf4 10.0-0 0-0 11.h3 Lg5 12.Sh2 Lh4 13.Sdf3 Df6
14.Sxh4 Dxh4 15.g3 Sxh3+ 16.Kh1 Df6 17.f4 exf4 18.De1 Dg5 19.gxf4
Sxf4 20.Tg1 Dh6 21.Df2 Sh3 22.Dg3 g6 23.Tgf1 f5 24.exf5 Txf5 25.d4
Le6 26.Lf3 c6 27.Dxd6 De3 28.Dg3 Taf8 29.Dxh3 Txf3 30.Dxe6+ Dxe6
31.Txf3 Txf3 32.Sxf3 De4 33.Kg2 h5 34.Te1 Dg4+ 35.Kf2 h4 36.Te8+
Kg7 37.Te7+ Kh6 38.Txb7 Dg3+ 39.Ke3 h3 40.Ke4 h2 41.Sxh2 Dxh2
42.Kd3 g5 43.Te7 g4 44.Te6+ Kh5 45.Txc6 Dh3+ 46.Kc2 g3 47.Tc5+
Kh4 48.d5 g2 49.Tc4+ Kg3 0-1

(135) Dammann,Rudolf – Schäfer,Hans [C25]

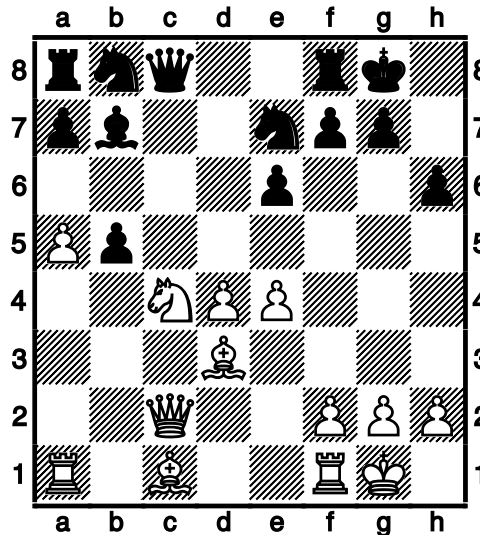
1.e4 e5 2.Sc3 c6 3.d4 Lb4 4.Ld2 De7 5.Sf3 exd4 6.Sxd4 Lxc3 7.Lxc3
Dxe4+ 8.De2 d5 9.0-0-0 Sf6 10.f3 Dxe2 11.Lxe2 0-0 12.The1 Le6 13.g4
Sbd7 14.Ld3 Sc5 15.Lb4 Sxd3+ 16.cxd3 Tfe8 17.h4 a5 18.Lc3 c5
19.Sxe6 fxe6 20.Te5 d4 21.Ld2 b6 22.Tde1 Kf7 23.h5 h6 24.Kc2 Sd7
25.T5e4 a4 26.a3 e5 27.b4 axb3+ 28.Kxb3 Te6 29.f4 Sf6 30.Txe5 Txe5
31.fxe5 Sxg4 32.e6+ Ke7 33.Tg1 Sf6 34.Txg7+ Kxe6 35.Tg6 Ta7
36.Lxh6 Kf5 37.Lg5



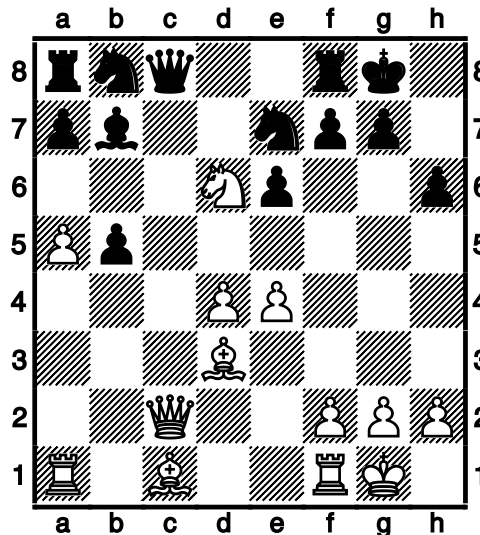
37...Sxh5 38.Tg8 Tb7 39.Lh6 Sf6 40.Tg5+ Ke6 41.Kc4 Sd7 42.a4 Se5+
43.Kb5 Sxd3 44.Tg6+ Kd5 45.Txb6 Txb6+ 46.Kxb6 Kc4 47.a5 Sb4
48.Ld2 Sd5+ 49.Kb7 Sb4 50.Lxb4 cxb4 0-1

(136) Stoephasius,Christian – Zedler,Ernst [B40]

1.e4 c5 2.Sf3 e6 3.c3 b6 4.d4 cxd4 5.cxd4 Lb7 6.Sc3 Lb4 7.Dc2 h6
 8.a3 Lxc3+ 9.bxc3 Se7 10.c4 Dc8 11.Ld3 d5 12.Sd2 dxc4 13.Sxc4 0-0
 14.0-0 La6 15.a4 Lb7 16.a5 b5



17.Sd6



17...Dxc2 18.Lxc2 La6 19.Ld3 b4 20.Sc4 Td8 21.Le3 Sbc6 22.Ta4
 Tab8 23.Tb1 Lb5 24.Ta2 Tbc8 25.Tab2 Sxa5 26.Se5 Lxd3 27.Sxd3
 Sac6 $\frac{1}{2}$ - $\frac{1}{2}$

(137) Lösekamm,Heinrich – Schleu,Günther [B20]

1.e4 c5 2.Lc4 e6 3.Sc3 a6 4.d3 Sc6 5.a3 Le7 6.Lf4 d6 7.Sf3 b5 8.La2
Lb7 9.0-0 Sf6 10.h3 h6 11.Te1 0-0 12.e5 dxe5 13.Lxe5 Sxe5 14.Sxe5
Dd6 15.Sf3 Tad8 16.Te3 Dc6 17.Df1 Dc7 18.Se4 Sxe4 19.dxe4 Lf6
20.c3 c4 21.Td1 Txd1 22.Dxd1 Td8 23.De2 e5 24.Lb1 Dd6 25.Lc2 Lc8
26.Sh2 Dd2 27.Sf3 Dc1+ 28.Kh2 Dxb2 29.a4 Le6 30.axb5 axb5 31.Ld1
Da3 32.Dc2 Dc5 33.Db1 g6 34.Le2 Kg7 35.Db4 Db6 36.g3 Td7 37.h4
Le7 38.Db2 f6 39.Sd2 Lc5 40.Sf1 Lxe3 41.Sxe3 Dc5 42.Da2 Dc6 43.f3
Dc5 44.Sg2 Ta7 45.Dd2 Ta1 46.Se3 Ta6 47.g4 Td6 48.Dc1 Dc6 49.h5
g5 50.Dc2 Dd7 51.Sd5 Lxd5 52.exd5 Kg8 53.Dg6+ Dg7 54.Dxg7+
Kxg7 55.Kg3 Txd5 56.Kf2 Kf7 57.Ke3 Ke6 58.Ke4 Td2 59.Ke3 Td6
60.Ke4 Ke7 61.Ke3 Kd7 62.Ke4 Kc6 63.Ke3 Kd5 64.Ld1 Ke6 65.Lc2
Ta6 66.Ke2 Ta2 67.Kd2 e4 68.fxe4 Ke5 69.Kc1 Kf4 70.Kb1 Ta7 71.Ld1
Kxe4 72.Kc2 Ke3 73.Kb2 Kd2 74.Lc2 Ta5 75.Lf5 Ta7 76.Lc8 Te7
77.Lf5 Te3 78.Ld7 Txc3 79.Lxb5 Tb3+ 0-1

(138) Sagitov,Kamil – Retzlaff,Jennifer [D03]

1.d4 Sf6 2.Sc3 d5 3.Sf3 e6 4.Lg5 Le7 5.e3 Sc6 6.Lb5 Ld7 7.a3 h6
8.Lh4 a6 9.Ld3 g5 10.Lg3 Sh5 11.De2 Lf6 12.Le5 De7 13.Lxc7 g4
14.Sd2 Tg8 15.Lb6 g3 16.hxg3 Txg3 17.Txh5 Tg6 18.Lxg6 fxg6
19.Txh6 Dg7 20.Th2 e5 21.Sxd5 Ld8 22.Lc5 Df7 23.Th8+ Dg8
24.Txg8+ Kf7 25.Df3+ Ke6 26.Txg6+ Lf6 27.Txf6# 1-0

(139) Zedler,Ernst – Lösekamm,Heinrich [A00]

C-Gruppe (7), 06.01.2005 $\frac{1}{2}$ - $\frac{1}{2}$

(140) Schäfer,Hans – Schmidt,Günther [B21]

1.e4 c5 2.d4 cxd4 3.Dxd4 Sc6 4.Dd1 e6 5.Le3 Le7 6.Ld3 a6 7.c3 Sf6
8.Sf3 0-0 9.0-0 b5 10.e5 Sd5 11.Ld4 Sxd4 12.cxd4 Tb8 13.Sc3 Lb7
14.a3 Sxc3 15.bxc3 Da5 16.Dc1 Tbc8 17.Db1 Kh8 18.Le4 Lxe4
19.Dxe4 Txc3 20.Db7 Td8 21.d5 Tc7 22.Dxc7 Dxc7 23.d6 Lxd6
24.Tac1 Db8 25.Sg5 Tf8 26.exd6 Dxd6 27.Tc3 h6 28.Se4 De5 29.f3 d5
30.Tc5 Dd4+ 31.Kh1 dxe4 32.Tfc1 e3 33.Tc8 Txc8 34.Txc8+ Kh7
35.g4 Dd1+ 36.Kg2 e2 Line

Pinneberger Winterturnier 2005

(141) Retzlaff, Jennifer – Dammann, Rudolf [C64]

1.e4 e5 2.Sf3 Sc6 3.Sc3 Lc5 4.Lb5 a6 5.Lxc6 dxc6 6.Sxe5 Df6 7.Sf3 Dg6 8.d3 Dxc2 9.Tf1 Lg4 10.Le3 Lxf3 11.Dd2 Lb4 12.Ld4 0-0-0 13.Df4 Txd4 14.De5 Td8 15.Df5+ Kb8 16.Dxf7 Sf6 17.Dc4 La5 18.Kd2 Sxe4+ 19.Ke3 Sd6 20.Df4 The8+ 21.Se4 Lb6+ 22.d4 Txe4+ 23.Dxe4 Lxe4 24.Tg1 Df3+ 25.Kd2 Sc4+ 26.Kc1 Dxf2 0-1

(142) Schleu, Günther – Sagitov, Kamil [D02]

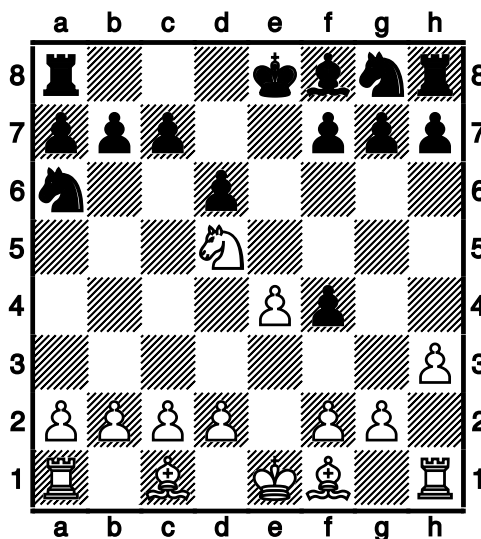
1.d4 d5 2.Sf3 Sc6 3.Lf4 Sf6 4.h3 e6 5.e3 Ld7 6.a3 Sh5 7.Lh2 Le7 8.Le2 Sf6 9.Sbd2 Se4 10.0-0 Lf6 11.c4 Sxd2 12.Dxd2 dxc4 13.Lxc4 0-0 14.Tac1 a6 15.Dc2 Se7 16.Ld3 Sg6 17.Lxc7 De8 18.Dd2 Lc6 19.Lg3 Dd7 20.Le2 Lxf3 21.Lxf3 e5 22.d5 Db5 23.Tfd1 Tad8 24.d6 Tfe8 25.Tc7 e4 26.Le2 Dxb2 27.Lc4 Tf8 28.Dd5 Sh8 29.Txb7 Dxa3 30.Dxe4 a5 31.Dd5 Da4 32.e4 Lc3 33.e5 Lb4 34.e6 Sg6 35.Txf7 Txf7 36.exf7+ Kf8 37.Lb5 Dc2 38.d7 Dc5 39.Dc4 Dxc4 40.Lxc4 Ke7 41.Kf1 Sf8 42.Lh4+ 1-0

(143) Schmidt, Günther – Retzlaff, Jennifer [A00]

C-Gruppe (8), 07.01.2005 1-0

(144) Stoephasius, Christian – Schäfer, Hans [C41]

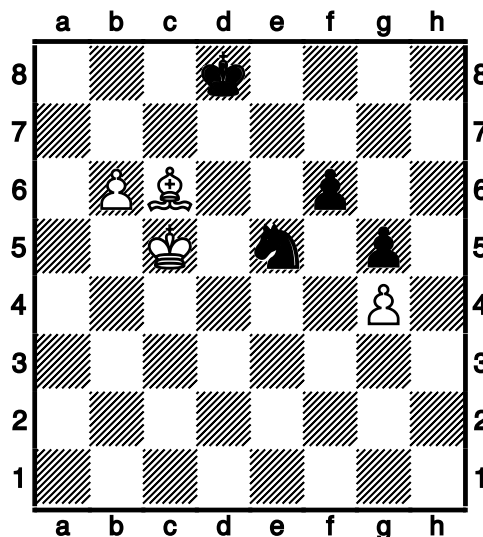
1.e4 e5 2.Sf3 d6 3.Sc3 Lg4 4.h3 Lxf3 5.Dxf3 Df6 6.Dg3 Df4 7.Dxf4 exf4 8.Sd5 Sa6



Pinneberger Winterturnier 2005

9.Sxf4? [9.Lxa6]

9...Sc5 10.f3 Le7 11.d4 Se6 12.Sd5 c6 13.Sxe7 Sxe7 14.Le3 0-0
15.Ld3 d5 16.0-0 dxe4 17.fxe4 Tad8 18.c3 c5 19.d5 b6 20.Tad1 Sc7
21.Lc4 Sg6 22.Tf3 Se5 23.Le2 Sxf3+ 24.Lxf3 Sb5 25.Tf1 Sd6 26.e5
Sc4 27.Lg5 Sxe5 28.Lxd8 Txd8 29.Le4 Sc4 30.b3 Sd2 31.Tf4 Te8
32.d6 f6 33.d7 Td8 34.Lc6 Kf7 35.Tf2 Txd7 36.Lxd7 Se4 37.Tf3 h6
38.h4 Sd6 39.Td3 Ke7 40.Lh3 g5 41.hxg5 hxg5 42.Te3+ Kf7 43.Kf2
Kg6 44.Te7 Sb5 45.c4 Sd4 46.Txa7 Sc6 47.Ta6 Sb4 48.Txb6 Sxa2
49.Tc6 Sb4 50.Txc5 Sd3+ 51.Kf3 Sxc5 52.b4 Sd3 53.b5 Se5+ 54.Ke4
Sxc4 55.Kd4 Sa5 56.g4 Sb3+ 57.Kd5 Kf7 58.Kd6 Sa5 59.Lg2 Sc4+
60.Kc5 Se5 61.Lc6 Ke7 62.b6 Kd8



63.Kd6 Sc4+ 64.Ke6 Sxb6 65.Kxf6 Sc4 66.Kxg5 Se5

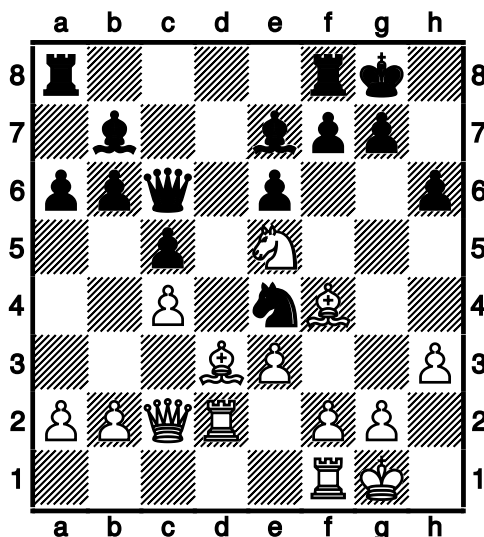
1/2-1/2

(145) Schleu, Günther – Zedler, Ernst [A46]

C-Gruppe (8), 06.10.2005

1.d4 Sf6 2.Sf3 e6 3.Lf4 d6 4.Sbd2 b6 5.e3 a6 6.h3 Lb7 7.Le2 Le7 8.0-0
0-0 9.c4 c5 10.dxc5 dxc5 11.Dc2 h6 12.Tad1 Dc8 13.Se5 Sbd7
14.Sxd7 Sxd7 15.Sf3 Dc6 16.Td2 Sf6 17.Ld3 Se4 18.Se5

Pinneberger Winterturnier 2005



18...De8 19.Lxe4 Lxe4 20.Dxe4 f5 21.Dc2 g5 22.Lh2 Ta7 23.Tfd1 Dc8
24.Sg6 Tf7 25.Sxe7+ Tfxe7 26.Td8+ Dxd8 1-0

(146) Schäfer,Hans – Lösekamm,Heinrich [A00]

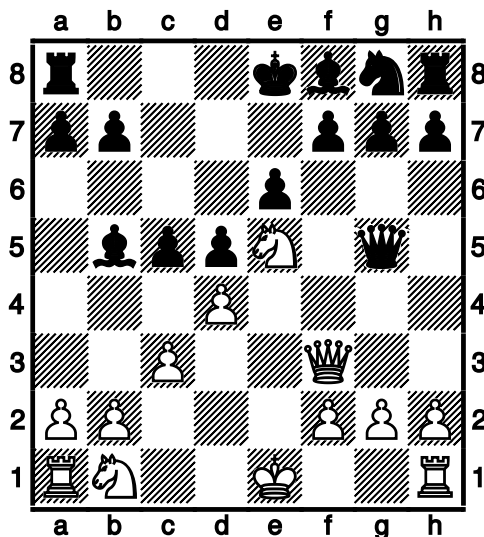
C-Gruppe (9), 08.01.2005 1-0

(147) Retzlaff,Jennifer – Stoephasius,Christian [A00]

C-Gruppe (9), 08.01.2005 0-1

(148) Dammann,Rudolf – Schmidt,Günther [C02]

1.e4 e6 2.d4 d5 3.e5 c5 4.c3 Sc6 5.Sf3 Ld7 6.Lb5 Sxe5 7.Sxe5 Lxb5
8.Lg5 Dxc5 9.Df3



Pinneberger Winterturnier 2005

9...Sf6 10.Sd2 Le7 11.h4 Df5 12.Dg3 0-0 13.f3 cxd4 14.cxd4 Tac8
15.Df2 Lb4 16.Td1 Dc2 17.a3 Lxd2+ 18.Txd2 Db1+ 19.Td1 Tc1 20.Dd2
Tfc8 21.Kf2 T8c2

0-1