

Pinneberger Schachclub von 1932 e.V.



Winterturnier

2004

Pinneberger Winterturnier 2004

(1) Hackbarth,Björn – Lüttig,Hendrik [B31]

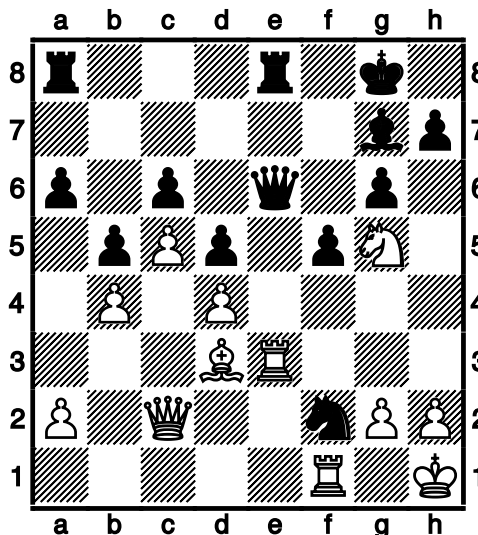
Winterturnier 2004 Pinneberg (1), 07.10.2004

1.e4 c5 2.Sf3 Sc6 3.Lb5 g6 4.0-0 Lg7 5.Sc3 e6 6.Te1 Sge7 7.a3 a6
8.Lc4 b5 9.La2 0-0 10.d3 Kh8 11.Le3 d6 12.Dd2 Sg8 13.d4 c4 14.Tad1
d5 15.De2 Sce7 16.e5 Sf5 17.Lg5 Db6 18.g4 Sfh6 19.h3 Ta7 20.Lc1
Se7 21.Sh2 Ld7 22.f4 Sc6 23.Lb1 Sd8 24.Sf3 Sg8 25.Dh2 f5 26.g5
Le8 27.Kg2 h5 28.h4 a5 [(=)]
29.Sa2 b4 30.b3 c3 31.a4 Tff7 32.Le3 Tfc7 33.Sc1 Sb7 34.Sd3 Lf8
35.Kg3 Ta8 36.Df2 Tac8 [(=)] $\frac{1}{2}$ - $\frac{1}{2}$

(2) Mungard,Jens-Uwe – Metzner,Arne [C42]

Winterturnier 2004 Pinneberg (1), 07.10.2004

1.e4 e5 2.Sf3 Sf6 3.Sxe5 De7 4.Sf3 Dxe4+ 5.Le2 Le7 6.Sc3 Dc6 7.0-0
0-0 8.b3 a6 9.Lb2 d6 10.d4 Le6 11.Sb1 b5 12.Sbd2 Sbd7 13.c4 d5
14.c5 Se4 15.b4 Lf5 16.Sb3 Dg6 17.Kh1 c6 18.Lc1 Sc3 19.De1 Se4
20.Lf4 Tfe8 21.Sc1 Sg5 22.Sh4 De6 23.Sxf5 Dxf5 24.Le3 Lf6 25.Ld3
De6 26.Dd2 Se4 27.Dc2 g6 28.Sb3 Lg7 29.Sd2 Sdf6 30.Sf3 Sg4
31.Tae1 Sxe3 32.Txe3 f5 33.Sg5 Sxf2+



34.Dxf2 Dxe3 35.Dxe3 Txe3 36.Td1 Tae8 37.Kg1 Lxd4

0-1

Pinneberger Winterturnier 2004

(3) Retzlaff, Jennifer – Schmidt, Günter [C00]

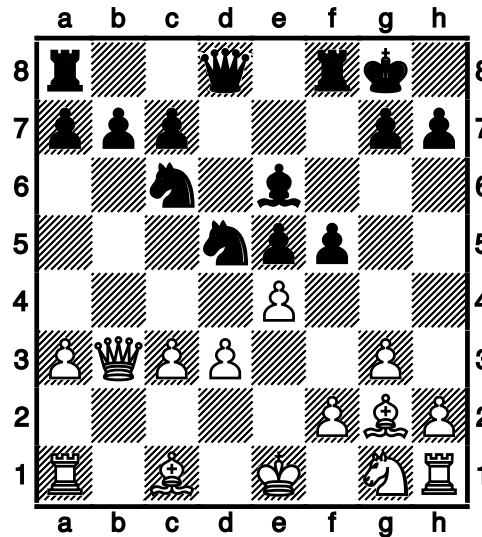
Winterturnier 2004 Pinneberg (1), 07.10.2004

1.e4 e6 2.Sf3 d5 3.Sc3 Sf6 4.d3 Lb4 5.Ld2 Le7 6.e5 Sfd7 7.d4 c5
8.Lb5 Sc6 9.Lxc6 bxc6 10.dxc5 Lxc5 11.Lg5 Db6 12.Le3 Lxe3 13.fxe3
Dxe3+ 14.Se2 Sxe5 15.Sxe5 Dxe5 16.c3 La6 0-1

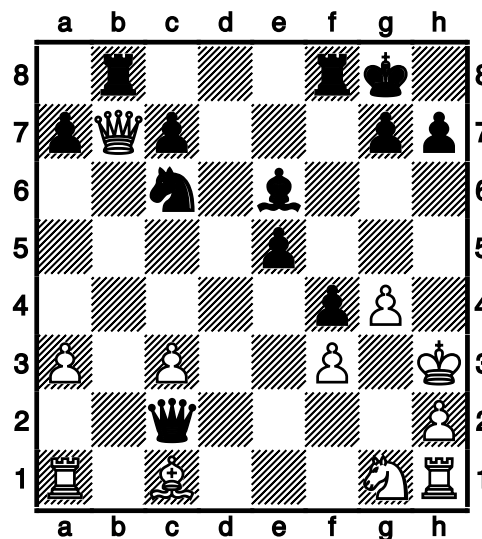
(4) Retzlaff, Wolfgang – Rakhmanov, Vsevolod [A25]

Winterturnier 2004 Pinneberg (1), 07.10.2004

1.c4 e5 2.Sc3 Sc6 3.g3 f5 4.d3 Sf6 5.Lg2 Lb4 6.a3 Lxc3+ 7.bxc3 0-0
8.e3 d5 9.cxd5 Sxd5 10.Db3 Le6 11.e4



11...Sf4 12.Dxb7 Sxg2+ 13.Kf1 Dxd3+ 14.Kxg2 Dxe4+ 15.f3 Dc2+
16.Kh3 f4+ 17.g4 Tab8



18.Dxc6 Tf6 19.Dxe6+ Txe6 20.g5 Tbb6

0-1

Pinneberger Winterturnier 2004

(5) Grothkopp,Dietrich – Himmelstaub,Werner [D55]

Winterturnier 2004 Pinneberg (1), 07.10.2004

1.d4 d5 2.c4 e6 3.Sc3 Sf6 4.Lg5 Le7 5.Sf3 0-0 6.e3 a6 7.c5 b6 8.cxb6
cxb6 9.Ld3 Lb7 10.0-0 Sbd7 11.Tc1 Tc8 12.Lb1 Te8 13.Dd3 Sf8
14.Sa4 Lc6 15.Sc3 Lb7 16.Se5 Se4 17.Lxe7 Dxe7 18.f4 f5 19.Sxe4
dxe4 20.Db3 b5 21.Txc8 Txc8 1/2-1/2

(6) Brückner,Gerhard – van Riesen,Klaus [C02]

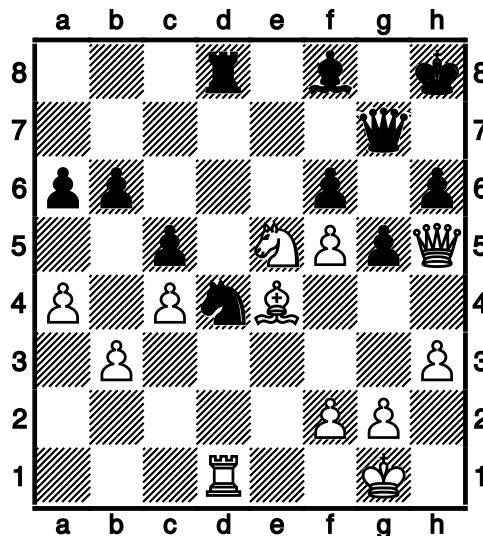
Winterturnier 2004 Pinneberg (1), 07.10.2004

1.e4 e6 2.d4 d5 3.e5 c5 4.c3 Sc6 5.Sf3 Db6 6.Ld3 Ld7 7.dxc5 Lxc5
8.0-0 a5 9.Sa3 Lxa3 10.bxa3 a4 11.Te1 Dc5 12.Tb1 Tb8 13.Tb5 Da7
14.Sg5 Sd8 15.Dh5 Sh6 16.Tb4 Dc5 17.Ld2 Sf5 18.Lxf5 g6 19.Dh6
gxf5 20.Sxh7 Txh7 21.Dxh7 Lc6 22.Dh3 Kd7 23.Th4 Dxa3 24.Lg5
Dxa2 25.De3 Da3 26.Db6 Dxc3 27.Tc1 Da3 28.Th8 f6 29.Th7+ Ke8
30.Dc7 fxg5 1-0

(7) Tornier,Siegfried – Dangelowski,Peter [B20]

Winterturnier 2004 Pinneberg (1), 07.10.2004

1.e4 c5 2.Lc4 e6 3.Sc3 a6 4.a4 Sc6 5.Sf3 d6 6.0-0 Sf6 7.d3 Le7 8.Lg5
Dc7 9.Se2 h6 10.Lh4 Ld7 11.h3 Sa5 12.La2 Tb8 13.b3 Sc6 14.c3 0-0
15.Dc2 Tfc8 16.Lb1 e5 17.Sh2 g5 18.Lg3 Sh5 19.Dd2 Kh8 20.d4 Sd8
21.dxe5 Sxg3 22.Sxg3 dxe5 23.Td1 Le6 24.c4 Sc6 25.Sf5 Td8 26.De2
Lxf5 27.exf5 f6 28.Dh5 Txd1+ 29.Dxd1 Lf8 30.Dh5 Dg7 31.Le4 Sd4
32.Td1 b6 33.Sg4 Td8 34.Sxe5



34...Kg8 35.Ld5+ Txd5 36.cxd5 fxe5 37.Td3 Df7 38.d6

0-1

Pinneberger Winterturnier 2004

(8) Schleu, Günther – Lösekamm, Heinrich [D02]

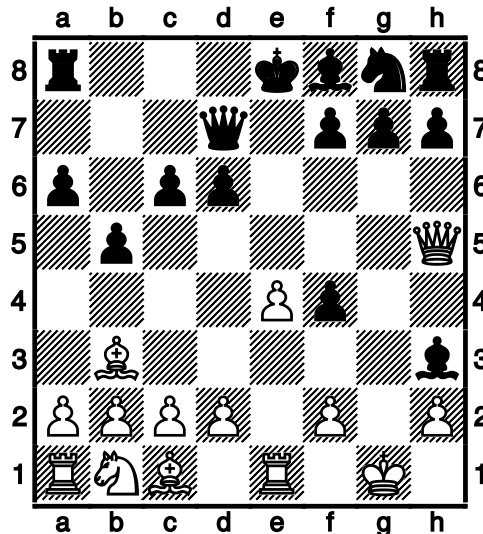
Winterturnier 2004 Pinneberg (1), 07.10.2004

1.d4 d5 2.Sf3 Sc6 3.h3 h6 4.Lf4 Lf5 5.a3 e6 6.Sbd2 Ld6 7.Se5 Lxe5
8.dxe5 a6 9.Sf3 Sge7 10.e3 Sg6 11.Lg3 0-0 12.Le2 Le4 13.0-0 Lxf3
14.Lxf3 Scxe5 15.De2 Sxf3+ 16.Dxf3 Se7 17.Tfd1 c6 18.c4 b5 19.cxd5
cxd5 20.e4 d4 21.Tac1 Tc8 22.Dd3 Txc1 23.Txc1 Da5 24.Ld6 Te8
25.Lxe7 Txe7 26.Tc8+ Kh7 27.e5+ g6 28.Dxd4 Tc7 29.Td8 De1+
30.Kh2 Tc1 31.Td7 Kg7 32.Df4 Dh1+ 33.Kg3 Tg1 34.Dxf7+ 1-0

(9) Zedler, Ernst – Remstedt, Ute [C62]

Winterturnier 2004 Pinneberg (1), 07.10.2004

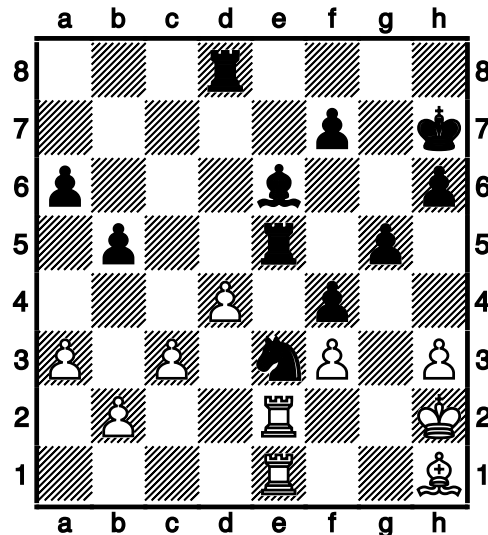
1.e4 e5 2.Sf3 Sc6 3.Lb5 d6 4.0-0 Lg4 5.Te1 a6 6.La4 b5 7.Lb3 Sd4
8.Ld5 c6 9.Lb3 Sxf3+ 10.gxf3 Lh3 11.f4 exf4 12.Dh5 Dd7



13.Dg5 [13.Lxf7+]

13...Dg4+ 14.Dxg4 Lxg4 15.d3 g5 16.Ld2 Lg7 17.Lc3 Lxc3 18.Sxc3
Se7 19.e5 d5 20.Kg2 Sg6 21.Sxd5 cxd5 22.Lxd5 Ta7 23.h3 Sh4+
24.Kh2 Le6 25.Lh1 0-0 26.f3 Td8 27.Te2 Tc7 28.Td1 Tc6 29.a3 h6
30.Tg1 Kh7 31.Td2 Tc5 32.Te1 Sf5 33.c3 Se3 34.d4 Txe5 35.Tde2

Pinneberger Winterturnier 2004

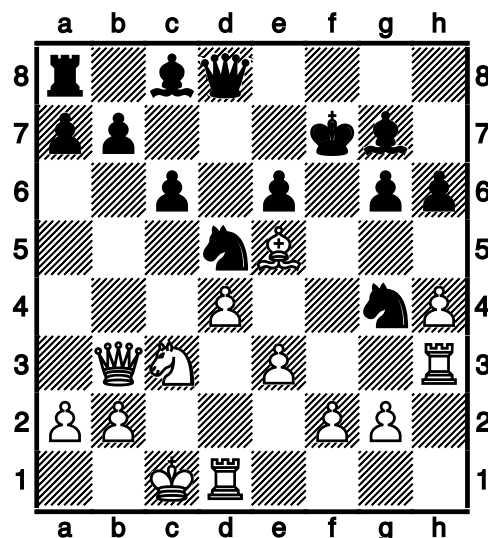


35...Sf1+ 36.Kg2 Txe2+ 37.Txe2 Se3+ 38.Kf2 Lxh3 39.Ke1 Te8
40.Txe3 fxe3 41.Ke2 f5 42.b3 f4 43.c4 Lf5 44.c5 Td8
0-1

(10) Kuhn,Gerd – Griwenka,Volker [D00]

Winterturnier 2004 Pinneberg (1), 07.10.2004

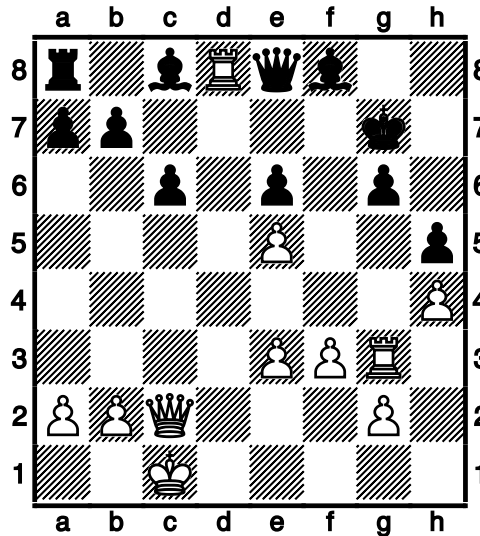
1.d4 Sf6 2.Lg5 d5 3.e3 Sbd7 4.Sf3 g6 5.c4 Lg7 6.Sc3 dxc4 7.Lxc4 0-0
8.Db3 Sb6 9.Lxf7+ Txf7 10.Se5 e6 11.Sxf7 Kxf7 12.h4 h6 13.Lf4 Sbd5
14.Le5 c6 15.Th3 Sg4 16.0-0-0



16...Sxc3 17.Dxc3 Lf8 18.Tf3+ Kg8 19.Dc2 De8 20.Tg3 h5 21.f3 Sxe5

Pinneberger Winterturnier 2004

22.dxe5 Kg7 23.Td8



23...Df7 24.Txf8 Kxf8 25.Txg6 Ke8 26.Th6 Dg7 27.Th7 Dg8 28.Dd3 a5
29.g4 a4 30.Txh5 Ta5 31.Tg5 Tc5+ 32.Kb1 Df7 33.f4 Td5 34.Dc2 Td7
35.h5 b6 36.Dxa4 Lb7 37.a3 Dh7+ 38.Tg6 Td5 39.Ka2 Kd8 40.Db4
Kc7 41.Df8 Td7 42.Tg8 c5 43.Db8+ Kc6 44.Tg6 Kb5 45.a4+ Kb4 46.e4
Df7 47.f5 Td2 48.Txe6 Dd7 49.Txb6+ Kc4 50.Da7

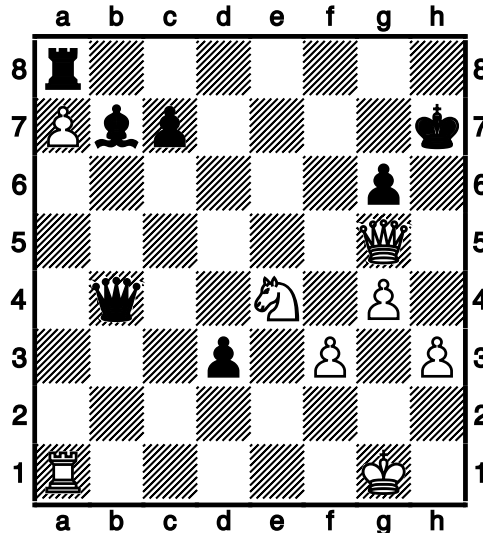
1-0

(11) Sengbusch, Gerhard – Dammann, Rudolf [C47]

Winterturnier 2004 Pinneberg (1), 07.10.2004

1.e4 e5 2.Sc3 Sc6 3.Sf3 Sf6 4.h3 Lc5 5.Lb5 a6 6.Lxc6 bxc6 7.Sxe5 d6
8.Sf3 0-0 9.d3 h6 10.Ld2 Te8 11.Dc1 Sh7 12.g4 Df6 13.Dd1 Le6
14.Tg1 d5 15.e5 Ld7 16.d4 Lb4 17.Kf1 De6 18.Se2 Lxd2 19.Dxd2 De7
20.Sg3 Tab8 21.b3 c5 22.c3 Lb5+ 23.Kg2 Tb6 24.Sf5 Df8 25.Kh2 f6
26.Tae1 Tbe6 27.a4 Lc6 28.Dd3 Sg5 29.Sxg5 hxg5 30.Dxa6 g6
31.Sg3 fxe5 32.Tgf1 exd4 33.Txe6 Txe6 34.cxd4 Kg7 35.Da7 Df4
36.Kg1 cxd4 37.Dc5 d3 38.Dc3+ d4 39.Dxd3 Tf6 40.a5 Lb7 41.b4 Dd6
42.Se4 Dd5 43.f3 Tf4 44.a6 La8 45.Sd2 Tf6 46.Te1 Lc6 47.Te7+ Kh6
48.a7 Tf8 49.Te1 Ta8 50.Ta1 Dd6 51.Se4 Dxb4 52.Da6 Lb7 53.Df6 d3
54.Dxg5+ Kh7

Pinneberger Winterturnier 2004



55.Dh4+ Kg8 56.Sf6+ Kf7 57.Se4 Dd4+ 58.Kg2 Dxa1 59.Dh7+ Kf8
60.Sg5 Db2+ 61.Kg3 De5+ 62.f4 De3+ 63.Sf3 Dxf3+ 64.Kh4 Df2+
65.Kg5 Dc5+ 66.Kh6 Le4 67.Dg7+ Ke8 68.f5 gxf5 69.Dg6+ Kd7
70.Dg7+ Kc6 71.g5 d2 72.Da1 Txa7 73.Dd1 Dd6+ 74.g6 f4 75.Kh7
Dxg6+ 76.Kh8 Dh7#

0-1

(12) Koester, Gerhard, Dr. – Kuhn, Gerd [B18]

Winterturnier 2004 Pinneberg (2), 14.10.2004

1.e4 c6 2.d4 d5 3.Sc3 dxe4 4.Sxe4 Lf5 5.Sg3 Lg6 6.Sf3 e6 7.Ld3
Lxd3 8.Dxd3 Da5+ 9.Ld2 Da6 10.c4 Sf6 11.0-0 Sbd7 12.Dc2 Le7 13.b4
0-0 14.a4 Tac8 15.Db3 Db6 16.Tab1 Dc7 17.Tfe1 a6 18.Se5 b5 19.Lf4
bxc4 20.Dxc4 Db7 21.Sxd7 Dxd7 22.Se4 Sxe4 23.Txe4 Dd5 24.De2
Tfd8 25.g4 Ld6 26.Lxd6 Txd6 27.Dxa6 Tcd8 28.De2 Dg5 29.f4 Df6
30.f5 Txd4 31.fxe6 Txe4 32.exf7+ Dxf7 33.Dxe4 Da2 34.Kh1 Dxa4
35.Te1 h6 36.h4 Td1 37.g5 Txe1+ 38.Dxe1 hxg5 39.hxg5 Kf7 40.Df2+
Kg6 41.Df4 Dd1+ 42.Kh2 Dh5+ 43.Kg3 Dxg5+ 44.Kf3 Dxf4+ 45.Kxf4
Kf6 46.Ke4 g5 47.Kd4 Ke6 48.Ke4 g4

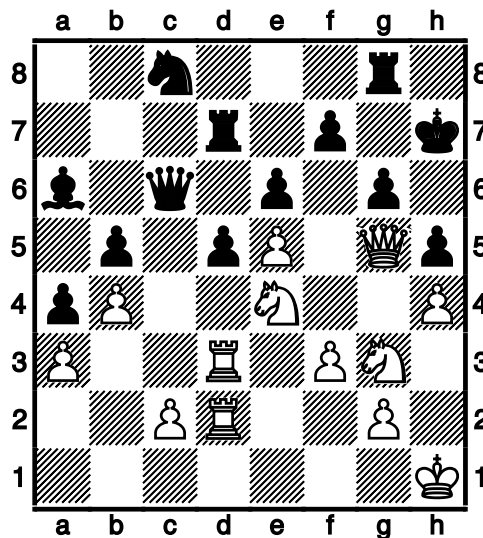
0-1

Pinneberger Winterturnier 2004

(13) Zimmermann,Manfred – Lüttig,Hendrik [B34]

Winterturnier 2004 Pinneberg (2), 14.10.2004

1.e4 c5 2.Sf3 Sc6 3.d4 cxd4 4.Sxd4 g6 5.Sc3 a6 6.Le3 Lg7 7.Lc4 e6
8.Dd2 Sge7 9.0-0 0-0 10.a3 b5 11.La2 Lb7 12.f3 Sa5 13.Tad1 Dc7
14.Sde2 Tad8 15.Sg3 Sc4 16.Lxc4 Dxc4 17.Df2 d6 18.Td3 Sc8 19.Kh1
Dc6 20.Tfd1 Td7 21.Lf4 Tfd8 22.Dd2 a5 23.Lh6 La6 24.Lxg7 Kxg7
25.b4 a4 26.Dg5 Kh8 27.e5 d5 28.Df6+ Kg8 29.h4 h5 30.Dg5 Kh7
31.T1d2 Tg8 32.Sce4



32...Kg7 33.Tc3 Db6 34.Sxh5+ Kf8 35.Dh6+ Ke7 36.Shf6 Tgd8
37.Sxd7 Txd7 38.Sf6 Td8 39.Dg5 Db7 40.Tc7+ Dxc7 41.Sxd5+

0-1

(14) Schleu,Günther – Zedler,Ernst [A46]

Winterturnier 2004 Pinneberg (2), 14.10.2004

1.d4 Sf6 2.Sf3 e6 3.Lf4 d6 4.Sbd2 b6 5.e3 Lb7 6.h3 Le7 7.Ld3 Sc6
8.a3 Sd5 9.Lg3 f5 10.0-0 Lf6 11.c4 Sde7 12.Tc1 Sb8 13.De2 0-0
14.Tc2 Dd7 15.e4 g6 16.Te1 Sec6 17.d5 Sd8 18.exf5 exf5 19.Sb3 Kf7
20.Sbd4 Te8 21.Dd1 c5 22.Txe8 Dxe8 23.Te2 Dd7 24.Sb5 Lc8 25.De1
Db7 26.Sxd6+

1-0

Pinneberger Winterturnier 2004

(15) Tornier, Siegfried – Grothkopp, Dietrich [B10]

Winterturnier 2004 Pinneberg (2), 14.10.2004

1.e4 c6 2.Lc4 d5 3.exd5 cxd5 4.Lb3 Sf6 5.Sc3 e6 6.d3 Lb4 7.Ld2 0-0
8.Sf3 Sbd7 9.0-0 a6 10.a3 Ld6 11.Lg5 b5 12.Lh4 Lb7 13.Se2 Tc8
14.c3 h6 15.Dd2 Db6 16.Tac1 Sh5 17.Lc2 e5 18.Se1 f5 19.De3 Dc7
20.Df3 Shf6 21.Dxf5 Tce8 22.Dh3 Sc5 23.Lxf6 Txf6 24.d4 Se4 25.Sf3
Tef8 26.Lxe4 dxe4 27.Sxe5 Lxe5 28.dxe5 Dxe5 29.De3 $\frac{1}{2}-\frac{1}{2}$

(16) Kaland, Joachim – Singh, Nanak [C87]

Winterturnier 2004 Pinneberg (2), 14.10.2004

1.e4 e5 2.Sf3 Sc6 3.Lb5 d6 4.0-0 a6 5.La4 Sf6 6.Te1 Le7 7.h3 0-0
8.Lxc6 bxc6 9.c3 Le6 10.d4 exd4 11.cxd4 Dd7 12.Sc3 Tab8 13.b3 h6
14.Kh2 Tb7 15.e5 Sd5 16.Se2 Lf5 17.Sg3 Lg6 18.Ld2 Tfb8 19.De2 Tb5
20.Tac1 a5 [(=)] $\frac{1}{2}-\frac{1}{2}$

(17) Stier, Uwe – Retzlaff, Wolfgang [A03]

Winterturnier 2004 Pinneberg (2), 14.10.2004

1.f4 d5 2.Sf3 Sc6 3.e3 Lg4 4.d4 f5 5.Lb5 a6 6.Le2 Lxf3 7.Lxf3 Sf6
8.Sd2 e6 9.a3 Ld6 10.c4 b5 11.cxd5 exd5 12.Dc2 Se7 13.0-0 0-0
14.Sb3 Se4 15.Sc5 Lxc5 16.dxc5 c6 [(=)] $\frac{1}{2}-\frac{1}{2}$

(18) Torborg, Karl-Dieter – Remstedt, Ute [D00]

Winterturnier 2004 Pinneberg (2), 14.10.2004

1.d4 d5 2.Lf4 Lf5 3.e3 Sf6 4.h3 e6 5.Ld3 Se4 6.Sc3 Lb4 7.Sge2 Sd7
8.0-0 Sdf6 9.Sb5 La5 10.Sg3 a6 11.Sxf5 exf5 12.Sa3 b5 13.c3 0-0
14.Sb1 c6 15.b4 Lb6 16.f3 Sd6 17.Lxd6 Dxd6 18.Lxf5 Sh5 19.Ld3
Tfe8 20.f4 Dh6 21.Tf3 Lc7 22.g4 Sxf4 23.exf4 Lxf4 24.Df1 g5 25.Sa3
Dh4 26.Kg2 Te7 27.Df2 Dxf2+ 28.Txf2 Tae8 29.Sc2 Kg7 30.Th1 h6
31.h4 f6 32.hxg5 fxg5 33.Tff1 Ld2 34.Tf3 Lxc3 35.Se3 Txe3 36.Txh6
Kxh6 37.Tf6+ Kg7 38.Tg6+ Kf7 39.Th6 Txd3 40.Th7+ Kg8

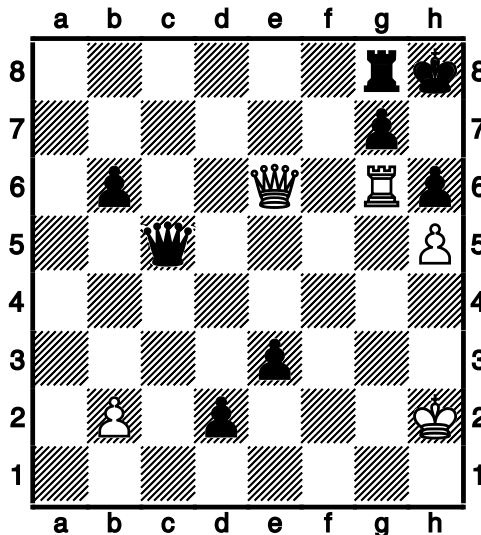
0-1

Pinneberger Winterturnier 2004

(19) Singh,Gurpreet – Mungard,Jens-Uwe [C50]

Winterturnier 2004 Pinneberg (2), 14.10.2004

1.e4 e5 2.Sf3 Sc6 3.Lc4 d6 4.h3 Le6 5.Lb3 Lxb3 6.axb3 Sf6 7.Sc3 Le7
8.d3 0-0 9.Le3 b6 10.Dd2 h6 11.Sd5 Sh7 12.Sxe7+ Sxe7 13.0-0 f5
14.exf5 Sxf5 15.Dc3 a5 16.Ta4 Dd7 17.Tfa1 Tac8 18.b4 axb4 19.Dxb4
Sxe3 20.fxe3 Tf6 21.Ta7 Dc6 22.Db3+ Kh8 23.T1a4 Txf3 24.gxf3 Dxf3
25.De6 Tf8 26.Ta1 Dxe3+ 27.Kh1 [(=)]
27...Df3+ 28.Kh2 De2+ 29.Kh1 [(=)]
29...Dxc2 30.Dg4 Dxd3 31.Tg1 Dd5+ 32.Tg2 Sg5 33.Ta3 Kh7 34.h4
Se6 35.Dg6+ Kh8 36.Tc3 Tg8 37.Df7 e4 38.Txc7 Sxc7 39.Dxc7 Dc5
40.Df7 d5 41.Kh2 e3 42.h5 d4 43.De6 d3 44.Tg6 d2



45.Dg4 Dc2 46.De6 d1D+ 0-1

(20) Schmoll,Peter – Metzner,Arne [C20]

Winterturnier 2004 Pinneberg (2), 14.10.2004

1.e4 e5 2.b3 Lc5 3.Lc4 Sf6 4.Sc3 a6 5.a4 d6 6.h3 0-0 7.Sf3 Sc6 8.d3
h6 9.Ld2 Le6 10.Se2 d5 11.Lxd5 Sxd5 12.exd5 Lxd5 13.Sg3 Te8 14.0-0
Sd4 15.Sxd4 Lxd4 16.c3 La7 17.Kh2 Df6 18.c4 Lc6 19.Tc1 Tad8
20.Dc2 Te6 21.c5 Tde8 22.b4 b6 23.Lc3 Dg6 24.Lb2 e4 25.d4 Ld5
26.Tfe1 c6 27.De2 b5 28.a5 Lb8 29.Tc3 f5 30.Kg1 f4 31.Dh5 fxf3
32.Dxg6 Txf6 33.f3 Tge6 34.f4 Lxf4 35.Lc1 e3 36.Ta3 Te4 37.Lb2 e2
38.Tf3 Ld2 39.Lc3 Lxe1 40.Lxe1 Txd4 41.Txf3 Tf4 42.Lc3 0-1

Pinneberger Winterturnier 2004

(21) Schäfer,Hans – Sengbusch,Gerhard [C55]

Winterturnier 2004 Pinneberg (2), 14.10.2004

1.e4 e5 2.Lc4 Sc6 3.d3 Sf6 4.Sf3 h6 5.0-0 a6 6.a3 Lc5 7.c3 De7 8.b4
La7 9.Sh4 d6 10.Le3 Sg4 11.Sf5 Lxf5 12.exf5 Dh4 13.h3 Sxe3 14.fxe3
Lxe3+ 15.Kh1 Dg3 16.Tf3 Dg5 17.De2 Lf4 18.g4 h5 19.Txf4 Dxf4
20.Sd2 hxg4 21.Ld5 Txh3+ 22.Kg1 Kd7 23.Tf1 Tg3+ 24.Lg2 De3+
25.Dxe3 Txe3 26.Le4 f6 27.Kf2 Th3 28.Sb3 Tah8 29.Sa5 Sxa5 30.bxa5
c6 31.c4 g3+ 32.Kg2 Th2+ 33.Kxg3 Ta2 34.Tb1 Kc7 35.Tb3 Th5
36.Kg4 Tg5+ 37.Kf3 Ta1 38.Ke2 Th5 39.Kd2 Th2+ 40.Kc3 Th3 41.Kb4
Tc1 42.Ka4 Th8 43.Tb2 Td8 44.Tg2 Td7 45.Tb2 Tc3 46.Kb4 Tc1
47.Ka4 Td8 48.Tg2 Td7 49.Tb2 Tg1 50.Tb6 Tg3 51.Kb3 d5 52.Lh1
Txd3+ 0-1

(22) Lösekamm,Heinrich – Retzlaff,Jennifer [C41]

Winterturnier 2004 Pinneberg (2), 14.10.2004

1.e4 e5 2.Sf3 d6 3.h3 Sf6 4.Sc3 Sc6 5.a3 Le6 6.Lb5 Dd7 7.Sg5 h6
8.Sxe6 fxe6 9.0-0 0-0-0 10.d3 d5 11.exd5 exd5 12.Lxc6 Dxc6 13.Ld2
d4 14.Sb1 g6 15.Lb4 Lg7 16.Le7 Tde8 17.Lxf6 Lxf6 18.c3 g5 19.Dg4+
Dd7 20.Dxd7+ Kxd7 21.c4 h5 22.Sd2 g4 23.hxg4 hxg4 24.Se4 Th6
25.f3 gxf3 26.Txf3 Tf8 27.Sxf6+ Txf6 28.Taf1 Ke6 29.b4 c6 30.a4 b6
31.Tg3 a6 32.Tg8 Txf1+ 33.Kxf1 Th1+ 34.Kf2 Ta1 35.Tb8 Ta2+ 36.Kf3
Kf5 37.g3 Ke6 38.Txb6 Kd6 39.Txa6 Ta3 40.Ke4 Ta2 41.c5+ Kc7
42.Kxe5 Te2+ 43.Kxd4 1-0

(23) Himmelstaub,Werner – Rakhmanov,Vsevolod [B22]

Winterturnier 2004 Pinneberg (2), 14.10.2004

1.e4 c5 2.c3 e5 3.Sf3 Sc6 4.Lb5 Sge7 5.Sg5 f6 6.Sf3 d5 7.exd5 Dxd5
8.h3 a6 9.La4 e4 10.Sg1 c4 11.Sa3 b5 12.Lc2 Se5 13.De2 Sd3+
14.Lxd3 cxd3 15.De3 Sg6 16.b4 Se5 17.f3 f5 18.h4 Sc4 19.Sxc4 bxc4
20.Sh3 Ld6 21.f4 0-0 22.0-0 Le7 23.g3 Ld7 24.Kg2 Le8 25.a4 a5 26.b5
Lc5 27.De1 Lh5 28.Kh2 Le2 29.Th1 Tfe8 30.La3 Lb6 31.Sg1 Lf3
32.Sxf3 exf3 33.Df1 Te2+ 34.Kh3 Txd2 35.Th2 Te2 36.Td1 Tae8
37.Lc1 De4 38.Th1 f2 39.Ld2 Le3 40.Lxe3 Dxe3 41.Dg2 Te4 42.Thf1

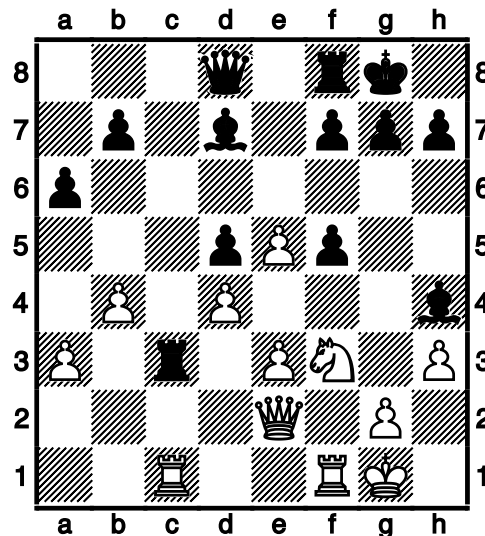
Pinneberger Winterturnier 2004

d2 43.Tb1 Te1 44.b6 Txb1 45.Txb1 De1 46.Df1 Dxf1+ 47.Txf1 Te6
48.b7 Tb6 49.Kg2 Txb7 50.Kxf2 Tb3 51.Td1 Txc3 52.Txd2 Ta3 53.Td5
Txa4 54.Txf5 c3 55.Tc5 Ta2+ 56.Ke3 c2 57.Kd2 Kf7 58.Kc1 h6 59.Tc6
h5 60.Ta6 g6 61.Tb6 Ta3 62.Kxc2 Txc3 63.Tb5 Tf3 64.Txa5 Txf4
65.Kd2 Txc4 66.Ke2 Tf4 67.Ke3 Tf5 68.Ta6 h4 69.Ta8 Kg7 70.Ta4 g5
71.Tg4 Kg6 72.Ke4 Tf7 73.Ke3 Kh5 74.Ta4 h3 75.Ta1 Kh4 76.Ta8 Kg3
77.Ta5 Te7+ 78.Kd2 g4 79.Ta8 Kg2 0-1

(24) Dammann,Rudolf – Schmidt,Günter [C02]

Winterturnier 2004 Pinneberg (2), 14.10.2004

1.e4 e6 2.d4 d5 3.e5 c5 4.c3 Sc6 5.Sf3 Ld7 6.a3 Sge7 7.Lg5 Db6 8.b4
cxb4 9.cxb4 Sf5 10.Le3 Sxe3 11.fxe3 a6 12.Sc3 Tc8 13.Tc1 Se7
14.Ld3 Sg6 15.0-0 Le7 16.h3 0-0 17.Sh2 Lg5 18.Df3 Dd8 19.Tc2 Sh4
20.Dg3 Sf5 21.Lxf5 exf5 22.Tcc1 Lh4 23.Df3 Dg5 24.De2 Dd8 25.Sf3
Txc3



26.Sxh4 Dxh4 27.Txc3 Lb5 28.Dc2 Lxf1 29.Kxf1 g6 30.Tc8 Txc8
31.Dxc8+ Kg7 32.Dxb7 De4 33.Kf2 Dc2+ 34.Kg3 Dc4 35.e6 Dd3
36.Dxf7+ Kh6 37.Df8+ Kh5 38.e7 Dxe3+ 39.Kh2 Df4+ 40.Kg1 Dxd4+
41.Kf1 Da1+ 42.Ke2 Da2+ 43.Kd1 Db3+ 44.Ke2 Da2+ 45.Kd3 Dxa3+
46.Kd4 Dxb4+ 47.Kxd5 De4+ 48.Kd6 Dd4+ 49.Ke6 Db6+ 50.Kf7 Db3+
51.Kg7 Dc3+ 52.Df6 Dc7 53.Kf7 Dg3

1-0

Pinneberger Winterturnier 2004

(25) Dörge,Olaf – Brückner,Gerhard [C12]

Winterturnier 2004 Pinneberg (2), 14.10.2004

1.e4 [MacCutcheon-Variante]1...e6 2.d4 d5 3.Sc3 Sf6 4.Lg5 Lb4 [Das ist die Ausgangsstellung der MacCutcheon-Variante.]

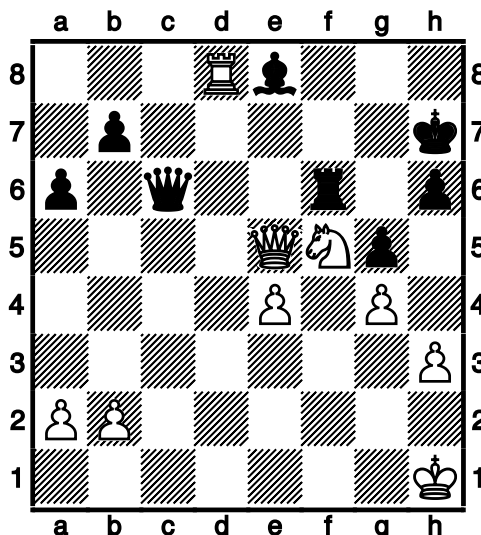
5.e5 [Hauptvariante]

5...h6 6.Ld2 Sfd7 7.Dg4 Tg8 8.Lxh6 c5 9.Ld2 Sc6 10.Lb5 Sxd4 11.0-0 a6 12.Lxd7+ Lxd7 13.Sce2 Sc6 14.Lxb4 Sxb4 15.a3 Sc6 16.f4 b5 17.Dh3 b4 18.g4 Tb8 19.De3 Db6 20.Sf3 Sa5 21.axb4 Dxb4 22.Dc3 Db6 23.b3 Lb5 24.Sg3 d4 25.Sxd4 cxd4 26.Txd4 Sc6 27.Td6 Th8 28.f5 Db7 29.fxe6 fxe6 30.Txe6+ Se7 31.Td1 Dc8 32.Txe7+ Kxe7 33.Sf5+ Ke6 34.Td6+ Kf7 35.e6+ Ke8 36.Dxg7 Dxc2+ 37.Kxc2 Txh2+ 38.Kb1 1-0

(26) van Riesen,Klaus – Lemke,Detlef [B30]

Winterturnier 2004 Pinneberg (2), 14.10.2004

1.e4 c5 2.Sf3 Sc6 3.Lb5 Dc7 4.0-0 a6 5.Lxc6 Dxc6 6.d4 cxd4 7.Dxd4 d6 8.Sc3 Lg4 9.Le3 Sf6 10.Sh4 g6 11.f4 Lg7 12.f5 0-0 13.h3 Lh5 14.Dd3 Kh8 15.Tf2 Tad8 16.Sd5 e6 17.fxe6 fxe6 18.Sxf6 Lxf6 19.Txf6 Txf6 20.g4 g5 21.Ld4 e5 22.Lxe5 dxe5 23.Dxd8+ Le8 24.Sf5 Dc5+ 25.Kh1 Dc6 26.Dd5 Dxc2 27.Dxe5 Dc6 28.Td1 h6 29.Td8 Kh7



30.Kg1 Dc1+ 31.Kf2 Dc2+ 32.Kf3 Dc4 33.Ke3 Dc1+ 34.Ke2 Lb5+ 35.Kf2 Df1+ 36.Kg3 0-1

Pinneberger Winterturnier 2004

(27) Dangelowski, Peter – Lorenz, Jens [A45]

Winterturnier 2004 Pinneberg (2), 14.10.2004

1.d4 Sf6 2.Lf4 d6 3.e3 Lf5 4.h3 Sbd7 5.Sf3 c5 6.c3 cxd4 7.exd4 Db6
8.Db3 a6 9.Sbd2 Da7 10.Lc4 d5 11.Lxd5 Sxd5 12.Dxd5 Le6 13.De4
Sf6 14.Dc2 Sd5 15.Lg3 b5 16.0-0 g6 17.Tfe1 Lh6 18.Dd1 0-0 19.Se4
Lf5 20.Sh4 Ld7 21.Sc5 Lc6 22.Sf3 Tad8 23.Se5 La8 24.Dd3 Sf4
25.Lxf4 Lxf4 26.De2 Td5 27.Sed3 Ld6 28.Se4 Lb8 29.De3 Dc7 30.Sg3
e6 31.Tac1 a5 32.Sc5 Dc6 33.Df3 Txc5 34.dxc5 Dxc5 35.Dxa8 Lxg3
36.Df3 Ld6 37.Ted1 Dc7 38.De2 Lh2+ 39.Kh1 Lf4 40.Dxb5 Tb8 41.De2
Ld6 42.Td3 Db6 43.Tcd1 Lc5 44.T1d2 a4 45.Td7 a3 46.Df3 f5 47.b3
Da6 48.Td8+ 1-0

(28) Dangelowski, Peter – Himmelstaub, Werner [D00]

Winterturnier 2004 Pinneberg (3), 21.10.2004

1.d4 d5 2.Lf4 Sf6 3.e3 e6 4.Ld3 Le7 5.Sd2 0-0 6.h3 Sbd7 7.Sgf3 c5
8.c3 c4 9.Lc2 b5 10.a3 Lb7 11.De2 a5 12.0-0 Sh5 13.Lh2 g6 14.g4
Sg7 15.e4 dxe4 16.Lxe4 Ta7 17.Tfe1 Da8 18.a4 Lxe4 19.Dxe4 Dxe4
20.Txe4 b4 21.Sxc4 bxc3 22.bxc3 Tc8 23.Sfd2 Sf6 24.Te3 Sd5 25.Tf3
h5 26.gxh5 Sxh5 27.Tb1 Sg7 28.Tb3 Sf5 29.Sb6 Td8 30.Sxd5 Txd5
31.Se4 Kg7 32.Td3 Tad7 33.Sd2 Ld8 34.Sc4 f6 35.Se3 Sxe3 36.Txe3
Kf7 37.Kg2 Ke7 38.Lg3 Kf7 39.Te4 Lc7 40.Lxc7 Txc7 41.Th4 Kg7
42.Te4 Kf7 43.Te3 g5 44.Tb6 Te7 45.Kf1 Te8 46.Ke2 Te7 47.Te4 Tdd7
48.Tb5 Td5 49.c4 Txb5 50.cxb5 Tc7 51.Kd3 Tc1 52.Te2 Ke7 53.Tb2
Kd7 54.b6 Kc8 55.b7+ Kb8 56.Tb5 Tc7 57.Txa5 Kxb7 58.Tc5 Th7
59.Ke4 Th4+ 60.Ke3 Txh3+ 61.Ke2 Ta3 62.a5 Ta4 63.Ke3 Ta3+
64.Ke4 Th3 65.f3 Th4+ 66.Ke3 $\frac{1}{2}-\frac{1}{2}$

(29) Koester, Gerhard, Dr. – Hochreiner, Jürgen [C62]

Winterturnier 2004 Pinneberg (3), 21.10.2004

1.e4 e5 2.Sf3 Sc6 3.Lb5 d6 4.0-0 Ld7 5.c3 Sf6 6.Te1 Le7 7.d4 exd4
8.cxd4 0-0 9.Sc3 a6 10.Lc4 Lg4 11.Le3 Sxe4 12.Sxe4 d5 13.Ld3 dxe4
14.Lxe4 Lb4 15.Tf1 Ld7 16.Sg5 g6 17.Db3 Le7 18.Sf3 Tb8 19.d5 Sa5
20.Dc3 b6 21.b4 Sb7 22.Se5 Sd6 23.Ld3 Sb5 24.Db2 Lf6 25.a4 De7
26.f4 Sd6 27.Ld4 Lxe5 28.Lxe5 f6 29.Ld4 Sf5 30.Lf2 Dd6 31.Dc3 Se7
32.Lxa6 Ta8 33.Dc4 Dxd5 34.Dxd5+ Sxd5 35.Lb7 Sxb4 36.Lxa8 Txa8

Pinneberger Winterturnier 2004

37.a5 bxa5 38.Tfb1 Sc2 39.Ta2 Lf5 40.g4 Sb4

1-0

(30) Kuhn,Gerd – van Riesen,Klaus [A45]

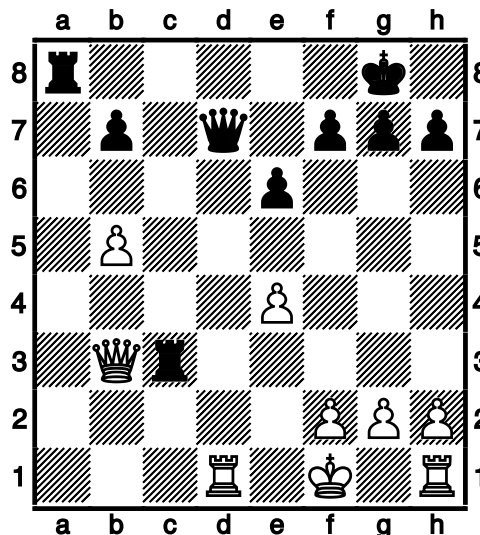
Winterturnier 2004 Pinneberg (3), 21.10.2004

1.d4 Sf6 2.Lg5 Se4 3.Lf4 c5 4.f3 Da5+ 5.c3 Sf6 6.d5 Db6 7.Lc1 g6
8.Sh3 Lg7 9.e4 d6 10.Sf2 0-0 11.Le2 e6 12.c4 exd5 13.cxd5 Te8 14.0-0
Sbd7 15.Sc3 a6 16.f4 c4 17.Kh1 Dc7 18.a4 Sc5 19.e5 dxe5 20.d6
Dd8 21.fxe5 Txe5 22.Lf4 Tf5 23.Sh3 Sb3 24.Ta3 Le6 25.Sg5 Dd7
26.Sxe6 Dxe6 27.g4 Tc5 28.Lf3 g5 29.Te1 Dd7 30.Te7 Dd8 31.Lg3 Lf8
32.Txb7 Ta5 33.Sd5 Sc5 34.Se7+ Lxe7 35.Txe7 Sd3 36.b3 Td5
37.Lxd5 Sxd5 38.bxc4 Sxe7 39.Txd3 Sc6 40.d7 1-0

(31) Lüttig,Hendrik – Kaland,Joachim [A00]

Winterturnier 2004 Pinneberg (3), 21.10.2004

1.b4 e6 2.Lb2 Sf6 3.b5 c5 4.c4 d5 5.e3 Le7 6.Sf3 0-0 7.Le2 Sbd7 8.d4
dxc4 9.Lxc4 cxd4 10.Lxd4 Lb4+ 11.Kf1 Sb6 12.Db3 Sxc4 13.Dxb4
Sb6 14.Sc3 Ld7 15.Td1 Sbd5 16.Sxd5 Sxd5 17.Db3 De8 18.a4 a6
19.Se5 axb5 20.Sxd7 Dxd7 21.axb5 Tfc8 22.e4 Sc3 23.Lxc3 Txc3



24.Db1 Dc7 25.g3 Dc4+ 26.Kg2 Tb3 27.Tc1 Dxb5 28.Dc2 g6 29.Dc7
Dd3 30.The1 Df3+ 31.Kg1 Tb2 32.Tc2 Txc2 33.Dxc2 h5 34.Te3 Ta1+

0-1

Pinneberger Winterturnier 2004

(32) Brückner, Gerhard – Hadlich, Winfried [B00]

Winterturnier 2004 Pinneberg (3), 21.10.2004

1.e4 Sc6 2.d4 e5 3.d5 Sb8 4.Sc3 d6 5.Lb5+ c6 6.La4 Le7 7.dxc6 bxc6
8.Le3 Sf6 9.Sge2 0-0 10.Sg3 d5 11.exd5 cxd5 12.Lg5 d4 13.Lxf6 Lxf6
14.Sce4 Le7 15.0-0 Sd7 16.c3 f5 17.Sd2 d3 18.Df3 e4 19.Sdxe4 fxe4
20.Dxe4 Sb6 21.Tad1 La6 22.Lb3+ Kh8 23.c4 Dc7 24.Txd3 Lc5 25.Lc2
De7 26.b3 Dxe4 27.Sxe4 [(=)] $\frac{1}{2}$ - $\frac{1}{2}$

(33) Schmidt, Roland – Dörge, Olaf [B22]

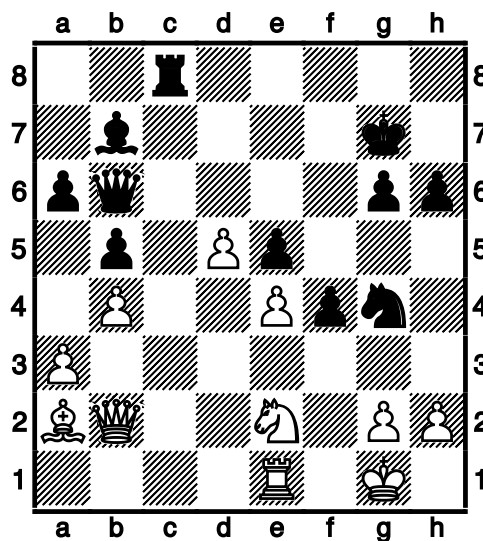
Winterturnier 2004 Pinneberg (3), 21.10.2004

1.e4 c5 2.c3 d5 3.exd5 Dxd5 4.Sf3 e5 5.d4 cxd4 6.cxd4 e4 7.Se5 Sc6
8.Lc4 Lb4+ 9.Ld2 Lxd2+ 10.Sxd2 Dxd4 11.Sxf7 Se5 12.Sxh8 Lg4
13.Da4+ Ld7 14.Lf7+ 0-1

(34) Lorenz, Jens – Retzlaff, Wolfgang [B20]

Winterturnier 2004 Pinneberg (3), 21.10.2004

1.e4 c5 2.a3 g6 3.Sf3 Lg7 4.Lc4 e6 5.0-0 a6 6.d3 Sc6 7.c3 Sge7 8.Te1
0-0 9.Le3 d6 10.Dd2 Se5 11.Sxe5 Lxe5 12.d4 cxd4 13.cxd4 Lg7
14.Lg5 b5 15.La2 Lb7 16.Sc3 Dd7 17.d5 e5 18.Lh6 f5 19.Lxg7 Kxg7
20.f4 Tae8 21.fxe5 dxe5 22.Tad1 Dd6 23.De3 f4 24.Df2 Sg8 25.Td3
Sf6 26.Sd1 h6 27.b4 Tc8 28.Tc3 Txc3 29.Sxc3 Tc8 30.Db2 Sg4
31.Se2 Db6+

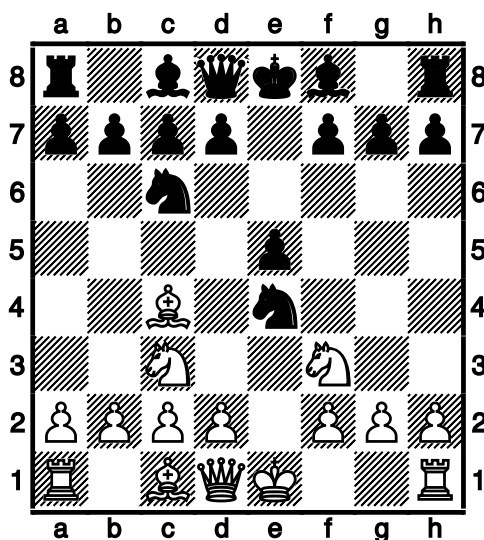


Pinneberger Winterturnier 2004

(35) Metzner, Arne – Singh, Gurpreet [C55]

Winterturnier 2004 Pinneberg (3), 21.10.2004

1.e4 e5 2.Sf3 Sc6 3.Lc4 Sf6 4.Sc3 Sxe4



5.Lxf7+ Kxf7 6.Sxe4 d5 7.Seg5+ Ke8 8.d3 h6 9.Sh3 Lg4 10.Dd2 Lc5
11.c3 Df6 12.b4 Lxh3 13.gxh3 Dxf3 14.Tg1 Lf8 15.Lb2 Td8 16.Tg3
Dh5 17.b5 Se7 18.Te3 Td6 19.f3 Dh4+ 20.Df2 Dxf2+ 21.Kxf2 Sg6
22.d4 Te6 23.Tae1 Ld6 24.Kg1 Kd7 25.f4 Sxf4 26.dxe5 Lc5

0-1

(36) Rakhmanov, Vsevolod – Stier, Uwe [E61]

Winterturnier 2004 Pinneberg (3), 21.10.2004

1.d4 Sf6 2.c4 g6 3.Sc3 d6 4.e4 c6 5.Ld3 Lg7 6.f3 Dc7 7.Le3 a6 8.Dd2
b5 9.a3 0-0 10.Tc1 Dd8 11.Lh6 e5 12.Lxg7 Kxg7 13.dxe5 dxe5 14.De2
Sh5 15.g3 Dg5 16.Dd2 De7 17.b4 Le6 18.c5 Td8 19.De3 a5 20.Sge2
axb4 21.axb4 Sa6 22.Tb1 Td7 23.0-0 Tad8 24.Tfd1 h6 25.Lc2 Lc4
26.Txd7 Txd7 27.Kf2 Dd8 28.Ke1 Kh7 29.Dc1 Df6 30.De3 Dd8 31.Dc1
Df6 32.De3 Dd8

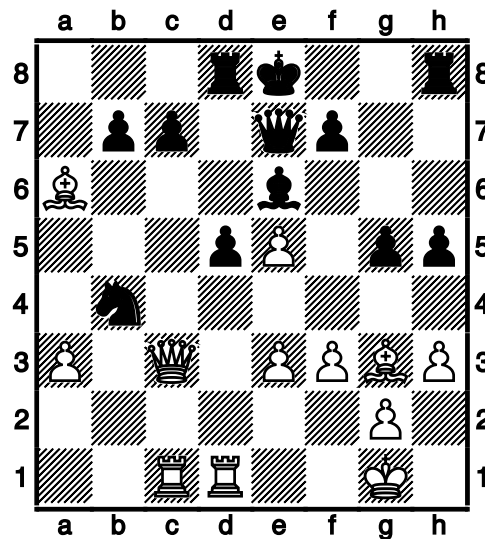
1/2-1/2

Pinneberger Winterturnier 2004

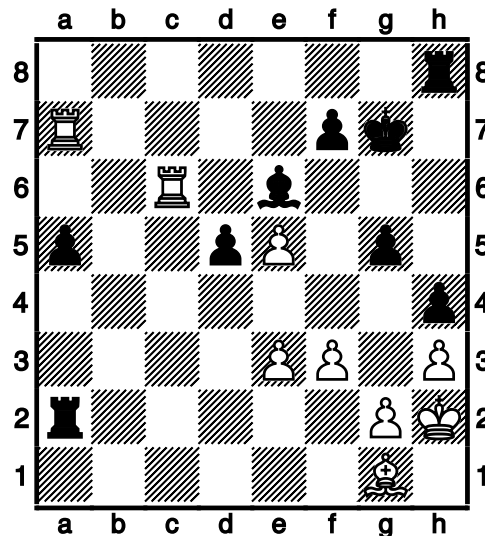
(37) Schleu, Günther – Sengbusch, Gerhard [D02]

Winterturnier 2004 Pinneberg (3), 21.10.2004

1.d4 Sf6 2.Sf3 d5 3.h3 Sc6 4.Lf4 Lf5 5.a3 a6 6.Sbd2 e6 7.e3 h6 8.Le2
Ld6 9.Se5 Lxe5 10.dxe5 Se4 11.Tc1 Sxd2 12.Dxd2 Le4 13.0-0 g5
14.Lg3 Lf5 15.f3 De7 16.Tfd1 Td8 17.De1 Df8 18.c4 Dg7 19.Dc3 h5
20.cxd5 exd5 21.Dc5 Le6 22.b4 Df8 23.Dc3 De7 24.Lxa6 Sxb4



25.axb4 bxa6 26.Dc6+ Kf8 27.Dxc7 Dxc7 28.Txc7 Kg7 29.Tdc1 Tb8
30.Ta7 Txb4 31.Tcc7 h4 32.Lf2 Tb1+ 33.Kh2 Tb2 34.Lg1 Ta2 35.Tc6
a5



Pinneberger Winterturnier 2004

36.Tca6 Tb8 37.Txa5 Txa5 38.Txa5 Tb4 39.Ta3 Kg6 40.Lf2 Tb2
41.Le1 Te2 42.Lb4 Kf5 43.Ld6 Tc2 44.Td3 Tc4 45.Td4 Txd4 46.exd4
Kf4 47.Kg1 Ke3 48.Lc5 Ld7 49.Lb6 Lb5 50.Lc5 Ld7 51.La7 Lb5
52.Lc5

½-½

(38) Schmidt,Günter – Lösekamm,Heinrich [D21]

Winterturnier 2004 Pinneberg (3), 21.10.2004

1.d4 d5 2.c4 dxc4 3.Sf3 Lf5 4.e3 Lxb1 5.Txb1 Sc6 6.Ld2 b5 7.a4 a6
8.Ta1 e6 9.axb5 axb5 10.Txa8 Dxa8 11.Le2 Da2 12.Dc1 Le7 13.0-0
Sf6 14.Se1 0-0 15.Lf3 Sb4 16.Lxb4 Lxb4 17.Sc2 Ld6 18.e4 Sd7 19.e5
Le7 20.Lc6 Sb6 21.Lxb5 h6 22.Se3 Td8 23.Sc2 Sa4 24.Lxa4 Dxa4
25.Td1 Tb8 26.Sa3 Lxa3 27.bxa3 Tb3 28.d5 exd5 29.Txd5 Td3
30.Txd3 cxd3 31.g3 Dc2 32.De3 De2 33.Dd4 d2 34.Dd8+ Kh7 35.Kg2
d1D 36.Dxd1 Dxd1

0-1

(39) Mungard,Jens-Uwe – Schmoll,Peter [C42]

Winterturnier 2004 Pinneberg (3), 21.10.2004

1.e4 e5 2.Sf3 Sf6 3.Sxe5 d6 4.Sf3 Sxe4 5.Lc4 Le7 6.De2 Lf5 7.d3
Sc5 8.a3 0-0 9.0-0 Te8 10.Le3 Lg4 11.h3 Lh5 12.Te1 Sbd7 13.d4 Sa4
14.c3 Lf6 15.Lb3 Sab6 16.Sbd2 d5 17.Ld1 c5 18.Df1 c4 19.b3 Tc8
20.bxc4 dxc4 21.Le2 Sa4 22.Tac1 b5 23.g4 Lg6 24.g5 Le7 25.Sb1
Lxb1 26.Txb1 Sxc3 27.Ta1 Se4 28.a4 a6 29.h4 g6 30.Ted1 Dc7 31.d5
Dd6 32.axb5 axb5 33.Ta5 Tb8 34.Sd4 Se5 35.Txb5 Ld8 36.Txb8 Dxb8
37.Lf4 Sf3+ 38.Lxf3 Dxf4 39.Dh3 Sd2 40.Dg4 Dxd4 41.Dxd4 Sxf3+
42.Kg2 Sxd4 43.Txd4 c3 44.d6 Kg7 45.Tc4 Te6

0-1

(40) von Hohenthal,Ludwig – Dammann,Rudolf [A00]

Winterturnier 2004 Pinneberg (3), 21.10.2004

1-0

Pinneberger Winterturnier 2004

(41) Dammann,Rudolf – Schleu,Günther [B20]

Winterturnier 2004 Pinneberg (4), 28.10.2004

1.e4 c5 2.Lc4 Sc6 3.Dh5 e6 4.d3 Sf6 5.Dh3 a6 6.a4 Se5 7.Sf3 Sxc4
8.dxc4 Le7 9.e5 Se4 10.Dg4 g6 11.Dxe4 f5 12.exf6 Lxf6 13.0-0 0-0
14.Td1 De7 15.c3 Tb8 16.Sa3 b6 17.Lf4 Lb7 18.De3 Tbe8 19.Ld6 Df7
20.Lxf8 Txf8 21.Td3 d5 22.Tad1 d4 23.cxd4 cxd4 24.Sxd4 Le7
25.Sxe6 1-0

(42) Schäfer,Hans – Remstedt,Ute [C23]

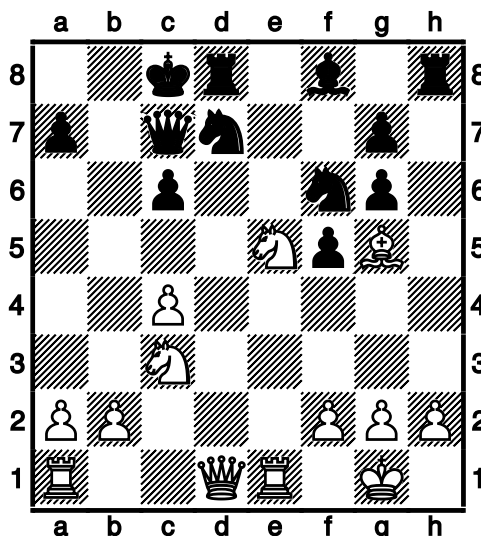
Winterturnier 2004 Pinneberg (4), 28.10.2004

1.e4 e5 2.Lc4 Lc5 3.Sf3 d6 4.d3 Lg4 5.0-0 h6 6.Le3 Sd7 7.Lxc5 Sxc5
8.Sbd2 c6 9.b4 Se6 10.Lxe6 fxe6 11.h3 Lh5 12.g4 Lg6 13.c3 Df6
14.De2 Se7 15.Sc4 0-0-0 16.a4 Thf8 17.Scd2 Lh7 18.De3 Kb8 19.a5
Sg6 20.g5 Df4 21.Dxf4 Sxf4 22.h4 Sxd3 23.Kg2 Sf4+ 24.Kg3 Se2+
25.Kg4 Sxc3 26.Ta3 Sxe4 27.Sxe4 Lxe4 28.Sd2 Ld5 29.f3 hxg5
30.Kxg5 Tf4 31.Tf2 Txb4 32.h5 Tf4 33.Kg6 Td7 34.Th2 e4 35.Kg5 Tf5+
36.Kg6 exf3 37.a6 b6 38.h6 gxh6 39.Txh6 Td8 40.Th7 c5 41.Kg7 Td7+
42.Kh6 Txh7+ 43.Kxh7 f2 44.Tg3 e5 45.Tg7 Tf7 46.Kg6 Txg7+
47.Kxg7 Lg2 48.Kf6 f1D+ 0-1

(43) Dörge,Olaf – Kuhn,Gerd [B18]

Winterturnier 2004 Pinneberg (4), 28.10.2004

1.e4 c6 2.d4 d5 3.Sc3 dxe4 4.Sxe4 Lf5 5.Sg3 Lg6 6.Sf3 Sd7 7.Ld3 e6
8.0-0 Sgf6 9.Lf4 Sd5 10.Lg5 Dc7 11.Te1 Sf4 12.Lxg6 hxg6 13.c4 Sh5
14.d5 e5 15.dxc6 bxc6 16.Se4 f5 17.Sc3 Shf6 18.Sxe5 0-0-0



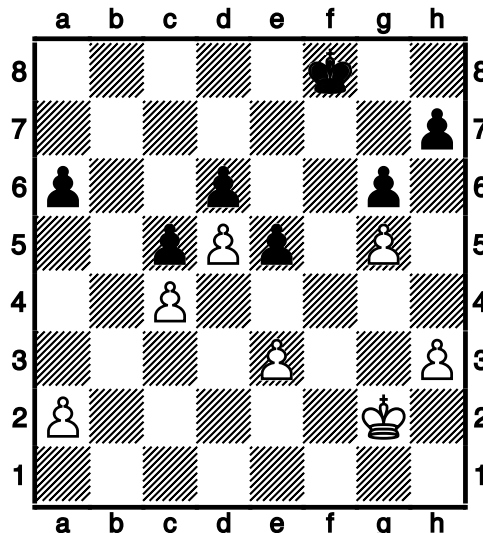
Pinneberger Winterturnier 2004

19.Lf4 Sxe5 20.De2 Ld6 21.Lxe5 Tde8 22.f4 Db6+ 23.Kh1 Sg4 24.h3 Sf2+ 25.Kh2 Txe5 26.fxe5 Lxe5+ 27.g3 Txh3+ 28.Kg2 Txg3+ 29.Kf1 Sg4 30.c5 Dxc5 31.Da6+ Kb8 32.Ke2 Tg2+ 0-1

(44) Dangelowski, Peter – Rakhmanov, Vsevolod [A44]

Winterturnier 2004 Pinneberg (4), 28.10.2004

1.d4 c5 2.d5 e5 3.e4 d6 4.Ld3 g6 5.c4 Lg7 6.Sc3 Se7 7.Sge2 0-0 8.Le3 f5 9.g3 fxe4 10.Lxe4 Sf5 11.Lxf5 Lxf5 12.Dd2 Sd7 13.h3 Sf6 14.g4 Le4 15.Sxe4 Sxe4 16.Dd3 Da5+ 17.Kf1 Sf6 18.Sc3 a6 19.Ld2 Dc7 20.Tb1 Tae8 21.Se4 Sxe4 22.Dxe4 Df7 23.Le3 Lh6 24.Kg2 Lxe3 25.Dxe3 Df4 26.Tbc1 Dxe3 27.fxe3 b5 28.b3 Tb8 29.Thf1 bxc4 30.Txf8+ Kxf8 31.Txc4 Tb4 32.g5 Txc4 33.bxc4



33...Ke7 34.Kg3 Kd7 35.Kg4 Kc7 36.h4 Kb6 0-1

(45) Kaland, Joachim – Singh, Gurpreet [C66]

Winterturnier 2004 Pinneberg (4), 28.10.2004

1.e4 e5 2.Sf3 Sc6 3.Lb5 d6 4.0-0 Sf6 5.Te1 Lg4 6.c3 a6 7.Lxc6+ bxc6 8.d4 Sd7 9.h3 Lh5 10.g4 Lg6 11.Lg5 Le7 12.Lxe7 Dxe7 13.Sbd2 0-0 14.Da4 c5 15.Tad1 Sb6 16.Dc2 h5 17.d5 Dd7 18.Sh2 hxg4 19.hxg4 f6 20.c4 Kf7 21.f3 Th8 22.b3 Ke7 23.Sdf1 Th3 24.Dg2 Tah8 25.Kf2 a5 26.a4 1/2-1/2

Pinneberger Winterturnier 2004

(46) Zimmermann,Manfred – Mungard,Jens-Uwe [C36]

Winterturnier 2004 Pinneberg (4), 28.10.2004

1.e4 e5 2.f4 exf4 3.Sf3 d5 4.exd5 Dxd5 5.Sc3 Dd8 6.Lc4 Le6 7.De2 Dc8 8.0-0 Ld6 9.d4 Kf8 10.Se5 Lxe5 11.dxe5 Sc6 12.Lxf4 Sge7 13.Tad1 h6 14.Lg3 g5 15.Sb5 Kg7 16.Lxe6 fxe6 17.Tf6 a6 18.Dh5 De8 19.Dxe8 Taxe8 20.Sxc7 Tc8 21.Sxe6+ Kh7 22.c3 Sg6 23.Tf7+ 1-0

(47) Schmidt,Roland – Hadlich,Winfried [C45]

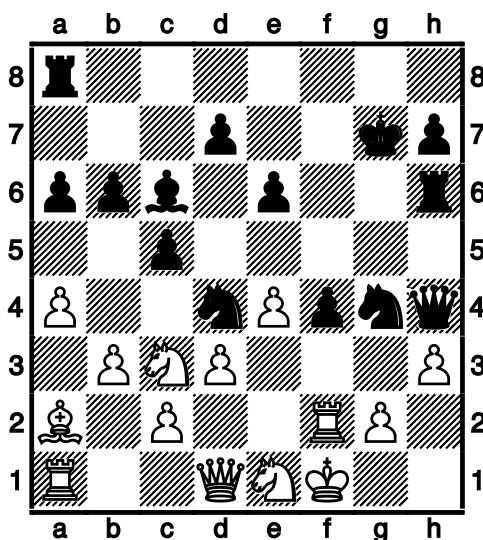
Winterturnier 2004 Pinneberg (4), 28.10.2004

1.e4 e5 2.Sf3 Sc6 3.d4 exd4 4.Sxd4 Sxd4 5.Dxd4 Df6 6.Dxf6 Sxf6 7.Sc3 Lb4 8.Ld2 0-0 9.f3 c6 10.Ld3 d5 11.0-0-0 d4 12.Se2 Lxd2+ 13.Txd2 c5 14.g4 a6 15.h4 b5 16.b3 Lb7 17.Sg3 Sd7 18.f4 Tfd8 19.Te1 Tac8 20.e5 Sb6 21.Sf5 Tc7 22.Sd6 Lc6 23.g5 Sc8 24.Sxc8 Tdxc8 25.Le4 1/2-1/2

(48) Tornier,Siegfried – Retzlaff,Wolfgang [B20]

Winterturnier 2004 Pinneberg (4), 28.10.2004

1.e4 c5 2.Lc4 e6 3.Sc3 a6 4.a4 Sc6 5.Sf3 g6 6.0-0 Lg7 7.d3 Sge7 8.Le3 Sd4 9.Se1 b6 10.Dd2 Lb7 11.Lh6 0-0 12.Lxg7 Kxg7 13.La2 f5 14.De3 f4 15.Dh3 Sec6 16.Dg4 Se5 17.Dd1 Dh4 18.f3 Lc6 19.Tf2 g5 20.h3 Tf6 21.b3 Th6 22.Kf1 g4 23.fxg4 Sxg4



24.Dd2 Se3+ 25.Kg1 Dg3 26.Kh1 Sg4

0-1

Pinneberger Winterturnier 2004

(49) Singh,Nanak – Lüttig,Hendrik [B34]

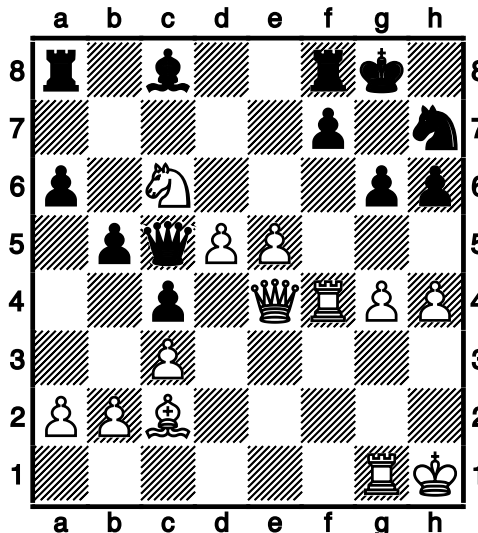
Winterturnier 2004 Pinneberg (4), 28.10.2004

1.e4 c5 2.Sf3 Sc6 3.d4 cxd4 4.Sxd4 g6 5.Le3 Lg7 6.Sc3 a6 7.a4 e6
8.Le2 Sge7 9.Dd2 0-0 10.Sb3 Sa5 11.Lc5 Sxb3 12.cxb3 Te8 13.Dd6
Sc6 14.b4 Lf8 15.Df4 Sxb4 16.Lxb4 Lxb4 17.0-0 Lxc3 18.bxc3 e5
19.Dg3 Df6 20.h4 [(=)] $\frac{1}{2}$ - $\frac{1}{2}$

(50) Stier,Uwe – Himmelstaub,Werner [A02]

Winterturnier 2004 Pinneberg (4), 28.10.2004

1.f4 e5 2.fxe5 d6 3.exd6 Lxd6 4.Sf3 Sf6 5.d4 h6 6.Sbd2 Lf5 7.e3 Sg4
8.Sc4 Le7 9.Ld3 Le6 10.c3 c6 11.0-0 0-0 12.h3 Sf6 13.Sce5 Dc7
14.De1 Sh5 15.e4 b5 16.Le3 a6 17.g4 Sf6 18.Kh1 Sh7 19.Tg1 Sd7
20.Sxd7 Lxd7 21.Dd2 c5 22.Lf4 Db6 23.Se5 Lc8 24.d5 Sg5 25.De3
Ld6 26.h4 Sh7 27.Taf1 Dc7 28.Sc6 c4 29.Lc2 Lxf4 30.Txf4 Dd6
31.Dg3 Sf6 32.Df3 Sh7 33.e5 Dc5 34.De4 g6



35.e6 Ta7 36.Sxa7 Dxa7 37.Tgf1 Db6 38.Txf7 Txf7 39.Txf7 Sf8 40.De5

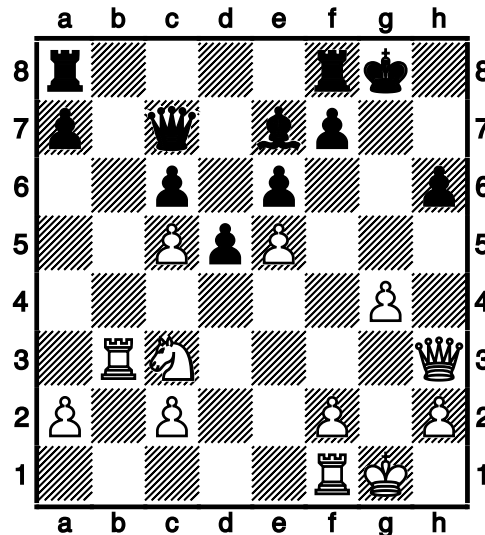
1-0

Pinneberger Winterturnier 2004

(51) Lorenz,Jens – Grothkopp,Dietrich [B12]

Winterturnier 2004 Pinneberg (4), 28.10.2004

1.e4 c6 2.d4 d5 3.e5 Lf5 4.Sf3 h6 5.Ld3 Lxd3 6.Dxd3 e6 7.Ld2 Db6
8.Sc3 Sd7 9.0-0 Se7 10.b4 Sf5 11.b5 Le7 12.Tab1 Dc7 13.bxc6 bxc6
14.Tb3 0-0 15.g4 Sh4 16.Sxh4 Lxh4 17.Dh3 Le7 18.Lxh6 Sc5 19.dxc5
gxh6



20.De3 Kg7 21.Se2 Da5 $\frac{1}{2}$ - $\frac{1}{2}$

(52) Hochreiner,Jürgen – Lemke,Detlef [B21]

Winterturnier 2004 Pinneberg (4), 28.10.2004

1.e4 c5 2.f4 d5 3.exd5 Dxd5 4.Sc3 Df5 5.Lb5+ Ld7 6.Sge2 e6 7.0-0
c4 8.Lxd7+ Sxd7 9.Sg3 Dc5+ 10.Kh1 Sgf6 11.d4 cxd3 12.Dxd3 Le7
13.Le3 Dc6 14.Tad1 0-0 15.Sce4 Tfd8 16.Sxf6+ Sxf6 17.De2 Da4
18.Txd8+ Txd8 19.Td1 Txd1+ 20.Dxd1 Dxa2 21.b3 Da5 22.h3 h6 23.c4
Dc3 24.Lf2 a6 25.Kh2 Db4 26.Df3 Sd7 27.Se4 b5 28.Dd1 Sc5 29.Sxc5
Lxc5 30.Le1 Da3 31.Dd8+ Lf8 32.Lf2 bxc4 33.bxc4 Dd6 34.Dxd6 Lxd6
35.g3 Kf8 36.Lb6 Ke8 37.c5 Le7 38.c6 Lb4 39.Kg2 Ke7 40.Kf2 Kd6
41.c7 Kd7 42.Ke2 Ld6 0-1

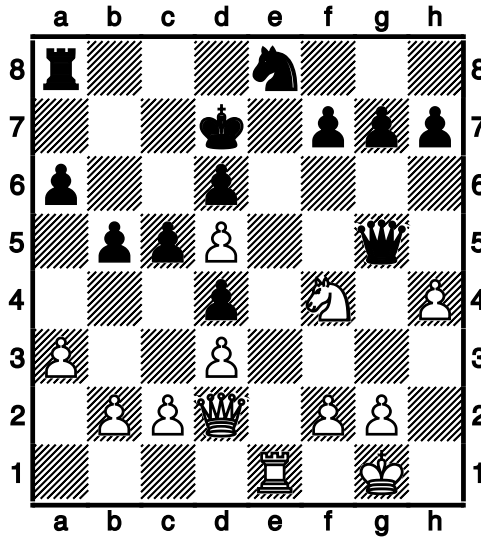
(53) Lösekamm,Heinrich – Zedler,Ernst [B20]

Winterturnier 2004 Pinneberg (4), 28.10.2004

1.e4 c5 2.Lc4 e6 3.Sf3 Sc6 4.d3 Le7 5.Ld2 Lf6 6.Lc3 Lxc3+ 7.Sxc3 a6
8.a3 b5 9.La2 d6 10.Se2 e5 11.h3 De7 12.Dd2 Le6 13.Ld5 Lxd5

Pinneberger Winterturnier 2004

14.exd5 Sd4 15.Sfxd4 exd4 16.0-0 Sf6 17.Sf4 Kd7 18.Tfe1 Dd8 19.Te2
Te8 20.Txe8 Sxe8 21.Te1 Dg5 22.h4

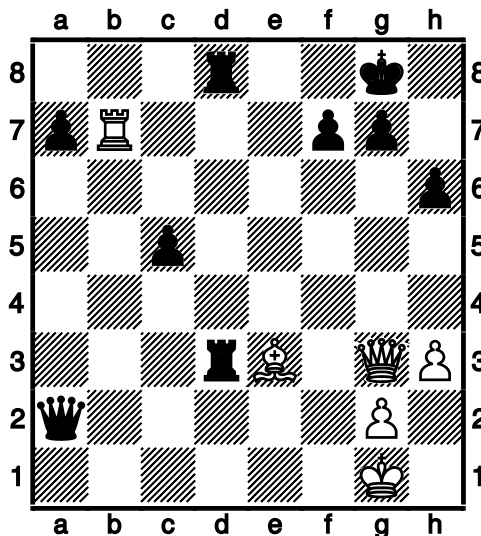


22...Dd8 23.g3 Sc7 24.De2 De8 25.Dg4+ 1-0

(54) Hackbarth, Björn – Schmoll, Peter [C44]

Winterturnier 2004 Pinneberg (4), 28.10.2004

1.c3 e5 2.e4 Sc6 3.Sf3 d5 4.exd5 Dxd5 5.c4 Dd8 6.Sc3 Lc5 7.Le2 Sf6
8.d3 h6 9.0-0 0-0 10.Se4 Sxe4 11.dxe4 Ld4 12.Ld2 Lxb2 13.Tb1 Ld4
14.Dc2 Df6 15.Sxd4 Sxd4 16.Dd3 Td8 17.De3 c5 18.f4 Sxe2+ 19.Dxe2
exf4 20.Lxf4 Dg6 21.Tf3 Lg4 22.Txb7 Lxf3 23.Dxf3 Td4 24.e5 Tad8
25.h3 Df5 26.e6 Dxe6 27.Le3 Td3 28.Kf2 Dxc4 29.Dg3 Dxa2+ 30.Kg1



Pinneberger Winterturnier 2004

30...Kh7 31.De5 De2 32.Df5+ Kh8 33.Lxh6 De1+ 34.Kh2 Dg3+ 35.Kg1
Td1+ 36.Df1 Txf1+ 37.Kxf1 Td1+ 38.Ke2 Dxcg2+ 39.Kxd1 Dxb7 40.Ld2
Dh1+ 41.Kc2 Dxc3 42.Kb2 c4 43.Lc3 a6 44.Kc2 Kh7 45.La5 Db3+
46.Kd2 Da2+ 47.Ke3 Dxa5 48.Kd4 c3 49.Kc4 c2 50.Kd3 Da4

0-1

(55) Torborg, Karl-Dieter – Schmidt, Günter [D00]

Winterturnier 2004 Pinneberg (4), 28.10.2004

1.d4 d5 2.Lf4 Sf6 3.e3 e6 4.Ld3 Ld6 5.Lxd6 cxd6 6.Sf3 Db6 7.b3 Sc6
8.0-0 e5 9.dxe5 dxe5 10.Le2 Lg4 11.Sc3 Le6 12.Sg5 Sb8 13.Sxe6
Dxe6 14.Sb5 Db6 15.Sc3 Dd6 16.f4 e4 17.Lc4 0-0 18.Sxd5 Sxd5
19.Lxd5 Db6 20.Dd4 Dxd4 21.exd4 Sc6 22.Tad1 Tfe8 23.Tfe1 e3
24.Td3 Kf8 25.Lxc6 bxc6 26.d5 cxd5 27.Txd5 f6 28.Te2 Tad8 29.Txd8
Txd8 30.g3 Td1+ 31.Kg2 Td2 32.Kf1 Td1+ 33.Te1 Td2 34.Te2 Td1+
35.Kg2 Td2 36.Kf3 f5 37.Kxe3 Td7 38.c4 g6 39.Td2 Te7+ 40.Kd3 Kg7
41.a4 Kh6 42.Te2 Td7+ 43.Kc2 Tb7 44.Kc3 Td7 45.c5 Kh5 46.Kc4
Kg4 47.c6 Tf7 48.Kc5 g5 49.fxc5 Kxc5 50.Kd6 f4 51.gxf4+ Txf4 52.c7
Td4+ 53.Kc6 Td3 54.Te5+ Kf6 55.Tc5 Ke6

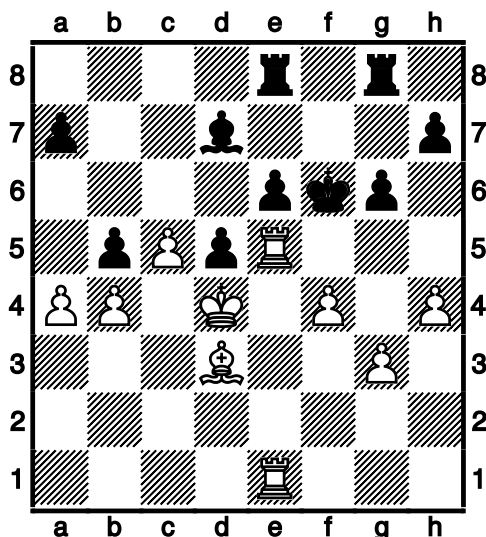
1-0

(56) van Riesen, Klaus – Griwenka, Volker [D05]

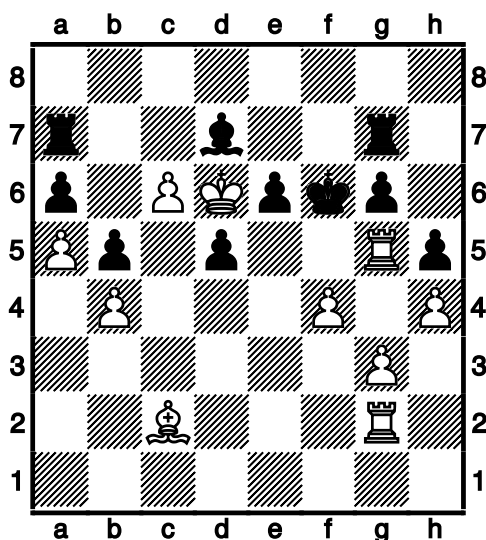
Winterturnier 2004 Pinneberg (4), 28.10.2004

1.d4 Sf6 2.Sf3 d5 3.e3 e6 4.Ld3 c5 5.b3 Sc6 6.Lb2 Le7 7.a3 0-0 8.0-0
Ld7 9.Sbd2 cxd4 10.exd4 Tc8 11.Te1 Dc7 12.Se5 g6 13.Tc1 Sxe5
14.dxe5 Sh5 15.Dg4 f5 16.exf6 Sxf6 17.De2 Df4 18.Sf3 Ld6 19.Le5
Lxe5 20.Dxe5 Dxe5 21.Sxe5 Tce8 22.c4 Lc8 23.g3 Sd7 24.f4 Sxe5
25.Txe5 Td8 26.c5 Ld7 27.Kf2 Kf7 28.Ke3 Tc8 29.h4 Tg8 30.Kd4 Kf6
31.b4 b5 32.Tce1 Tce8 33.a4

Pinneberger Winterturnier 2004



33...a6 34.a5 Lc6 35.Lf1 Te7 36.Lh3 Tge8 37.Lg4 Ld7 38.Th1 Tg8
 39.Lf3 Lc6 40.The1 h6 41.Lg4 Ld7 42.Lh3 h5 43.c6 Lc8 44.Kc5 Td8
 45.Td1 Tc7 46.Kb6 Te7 47.Td4 Td6 48.Kc5 Td8 49.Lf1 Tc7 50.Kb6
 Te7 51.Ld3 Td6 52.Kc5 Td8 53.Tg5 Tg8 54.Lc2 Tgg7 55.Td2 Tc7
 56.Kd6 Ta7 57.Tg2 Ld7



58.Txg6+ Txg6 59.Lxg6 Lxc6 60.Kxc6 Kxg6 61.Kb6 Ta8 62.Kb7 Td8
 63.Kxa6 Tb8 64.Ka7 Td8 65.Kb7 d4 66.a6 Kf5 67.a7 d3 68.Td2 Ke4
 69.a8D Txa8 70.Kxa8 Ke3 71.Td1 d2 72.Kb7 Ke2 73.Th1 d1D 74.Txd1
 Kxd1 75.Kb6 Ke2 76.Kxb5 Kf3 77.Kc4 Kxg3 78.b5 Kxh4 79.b6 Kg4
 80.b7 Kxf4
 1-0

Pinneberger Winterturnier 2004

(57) Sengbusch, Gerhard – von Hohenthal, Ludwig [C41]

Winterturnier 2004 Pinneberg (4), 28.10.2004

1.e4 e5 2.Sf3 d6 3.Sc3 a6 4.h3 Le6 5.Le2 Le7 6.d3 h6 7.Le3 Lg5
8.Dd2 Sc6 9.Sxg5 hxg5 10.Lxg5 Dd7 11.g4 Sd4 12.Ld1 Se7 13.Le3
Sdc6 14.a3 Sg6 15.Th2 0-0-0 16.Sd5 Lxd5 17.exd5 Sd4 18.c3 Kb8
19.cxd4 exd4 20.Lxd4 Tde8+ 21.Le3 Sf4 22.Lf3 Sxh3 23.Kf1 f6
24.Kg2 Sg5 25.Txh8 Txh8 26.Lxg5 fxg5 27.Dxg5 Df7 28.Te1 Tf8
29.Te3 g6 30.De7 Df4 31.De4 Df7 32.De6 Dh7 33.Le4 Th8 34.Kf1 Dg7
35.Te2 g5 36.Dg6 De5 37.Lg2 Df4 38.Te8+ Txe8 39.Dxe8+ Ka7
40.De3+ Dxe3 41.fxe3 Kb6 42.Ke2 c5 43.dxc6 bxc6 44.Kf3 Kc7
45.Ke4

1-0

(58) Mungard, Jens-Uwe – Kaland, Joachim [C02]

Winterturnier 2004 Pinneberg (5), 04.11.2004

1.e4 e6 2.d4 d5 3.e5 c5 4.c3 Db6 5.Sf3 Ld7 6.Le2 Lb5 7.0-0 Lxe2
8.Dxe2 Sc6 9.Le3 Tc8 10.b3 Dc7 11.Sa3 a6 12.Sc2 cxd4 13.cxd4
Sge7 14.Tac1 Sg6 15.Sg5 h6 16.Sh3 Le7 17.f4 0-0 18.Sf2 Dd7 19.Sd3
Sh4 20.g3 Sf5 21.Lf2 Dd8 22.b4 Db6 23.a3 Scxd4 24.Sxd4 Sxd4
25.De3 Tc4 26.Txc4 dxc4 27.Sc1 Td8 28.Kg2 Dc6+ 29.Kh3 Sf5 30.Dc3
b5 31.g4 Td3+ 32.Sxd3 Df3+

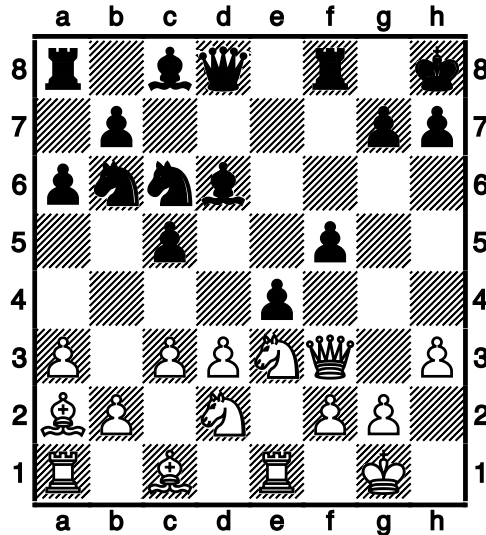
0-1

(59) Metzner, Arne – Zimmermann, Manfred [B50]

Winterturnier 2004 Pinneberg (5), 04.11.2004

1.e4 c5 2.Sf3 d6 3.Lc4 e6 4.0-0 a6 5.a3 Sf6 6.d3 Le7 7.h3 0-0 8.Te1 e5
9.Sh2 Sc6 10.c3 d5 11.exd5 Sxd5 12.Sg4 Sb6 13.La2 Ld6 14.Df3 Kh8
15.Sd2 f5 16.Se3 e4

Pinneberger Winterturnier 2004

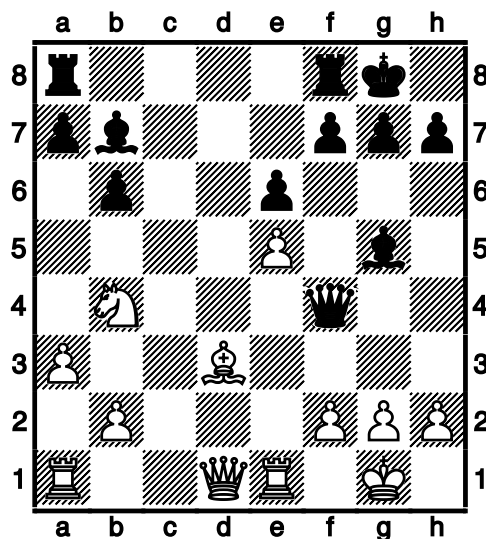


17.dxe4 Se5 18.De2 f4 19.Sf5 Lc7 20.f3 Dg5 21.Df2 Sd3 22.De2 Sxe1
 23.Dxe1 g6 24.Sh4 Ld8 25.e5 Dxh4 26.Dxh4 Lxh4 27.Se4 Le7 28.b4
 c4 29.Kf2 Le6 30.g3 fxg3+ 31.Kxg3 Ld5 32.Lh6 Tf7 33.Te1 Sa4 34.f4
 Lxe4 35.Txe4 Sxc3 36.Txc4 Sxa2 37.e6 Tf5 38.Tc7 Te8 39.Txb7 Kg8
 40.Ta7 Sxb4 41.axb4 Tb5 42.Txa6 Txb4 43.Kg4 Td4 44.h4 Td6
 45.Txd6 Lxd6 46.f5 gxf5+ 47.Kxf5 Le7 48.h5 Tb8 49.Lf4 Tb5+ 50.Le5
 0-1

(60) Lorenz, Jens – Tornier, Siegfried [D60]

Winterturnier 2004 Pinneberg (5), 04.11.2004

1.d4 d5 2.c4 Sf6 3.Sf3 e6 4.Lg5 Le7 5.e3 0-0 6.Sc3 Sbd7 7.Ld3 c5 8.0-0
 cxd4 9.exd4 b6 10.cxd5 Sxd5 11.Sxd5 Lxg5 12.Sb4 Lb7 13.Te1 Df6
 14.Se5 Sxe5 15.dxe5 Df4 16.a3



Pinneberger Winterturnier 2004

16...Dh4 17.g3 Dh3 18.Lf1 Df5 19.Lg2 Tad8 20.Lxb7 Txd1 21.Taxd1
h5 22.Te4 Dh3 23.Ted4 h4 24.Lg2 Df5 25.Le4 Dg4 26.Lh7+ Kxh7
27.Txg4 Le7 28.gxh4 g6 29.Sc6 Ld8 30.Tgd4 Lc7 31.Td7 Lb8 32.Tb7
1-0

(61) Retzlaff, Jennifer – Dammann, Rudolf [C61]

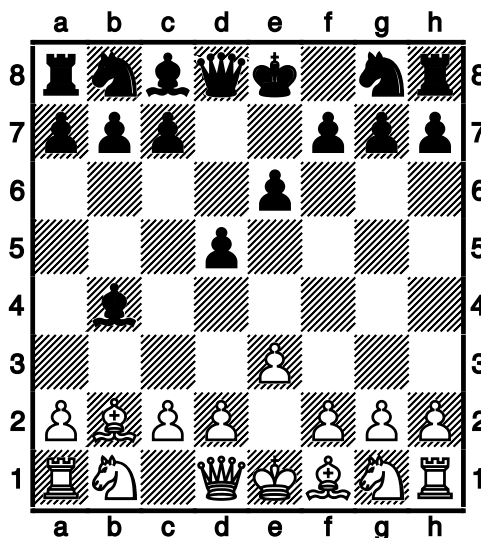
Winterturnier 2004 Pinneberg (5), 04.11.2004

1.e4 e5 2.Sf3 Sc6 3.Lb5 Sd4 4.Sxd4 exd4 5.d3 c6 6.Lc4 b5 7.Lb3
Ld6 8.c3 Df6 9.0-0 a5 10.cxd4 Dxd4 11.Sc3 a4 12.Lc2 Lb7 13.Le3 Df6
14.b3 Dxc3 15.bxa4 b4 16.Ld2 Df6 17.a3 bxa3 18.Tb1 La6 19.Lb4 a2
20.Tb3 Le5 21.Ta3 a1D 22.Txa1 Lxa1 23.Dxa1 Tb8 24.Lc3 Df4
25.Lxg7 Sh6 26.Lxh8 Sg4 27.g3 Dh6 28.h4 f6 29.Ld1 Se5 30.Le2 Ke7
31.Da3+ d6 32.Lxf6+ Dxf6 33.Dc3 Sf3+ 34.Lxf3 Dxc3 35.Le2 Lxd3
36.Lxd3 Dxd3 37.a5 c5 38.f3 c4 39.h5 c3 40.g4 c2 41.g5 Tb1 42.g6
Txf1+ 43.Kg2 Dxf3+ 0-1

(62) Lüttig, Hendrik – Schmoll, Peter [A00]

Winterturnier 2004 Pinneberg (5), 04.11.2004

1.b4 e6 2.Lb2 d5 3.e3 Lxb4??



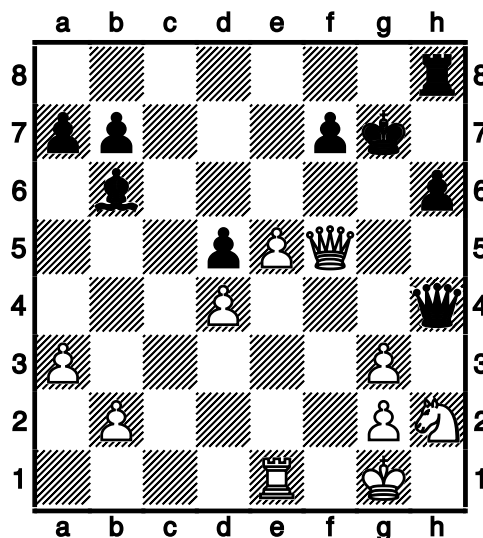
Pinneberger Winterturnier 2004

4.Lxg7 Sc6 5.Sf3 Sh6 6.Lxh8 f6 7.Sh4 Ke7 8.Lg7 Sf7 9.Df3 f5 10.a3
La5 11.Lc3 Dg8 12.Lb5 Lb6 13.Lxc6 bxc6 14.a4 a5 15.Dg3 La6
16.Dxg8 Txxg8 17.d3 Tg4 18.g3 Sg5 19.h3 Txh4 20.gxh4 Sf3+ 21.Kd1
Sxh4 22.Sd2 c5 23.Tg1 Sg6 24.Sf3 d4 25.exd4 cxd4 26.Lxd4 Lb7
27.Lxb6 Lxf3+ 28.Kd2 cxb6 29.Tab1 Lc6 30.Txb6 Lxa4 31.Ta6 Ld7
32.Txa5 Kf6 33.Ta7 Se5 34.Ke3 Lc6 35.Txh7 f4+ 36.Kxf4 Sg6+ 37.Ke3
Se7 38.Txe7 Kxe7 1-0

(63) Schmidt,Roland – Brückner,Gerhard [C07]

Winterturnier 2004 Pinneberg (5), 04.11.2004

1.e4 e6 2.d4 d5 3.Sd2 c5 4.Sgf3 Ld6 5.e5 Lc7 6.c3 Sc6 7.Ld3 Sge7
8.0-0 Sf5 9.Lxf5 exf5 10.Te1 Le6 11.Sf1 h6 12.Sg3 De7 13.Dc2 cxd4
14.cxd4 g6 15.Ld2 Tc8 16.Tac1 Lb6 17.Dd3 Kf8 18.a3 Kg7 19.h4 Sa5
20.Se2 Sc4 21.Tc2 Sxd2 22.Dxd2 Txc2 23.Dxc2 g5 24.Sg3 g4 25.Sh2
Dxh4 26.Sxf5+ Lxf5 27.Dxf5 g3 28.fxg3



28...Lxd4+ 29.Kh1 Dxg3 30.Df6+ Kg8 31.Tc1 Dg7 32.Dd8+ Kh7
33.Dxd5 Dxe5 34.Dxf7+ Dg7 35.Df5+ Dg6 36.Tc7+ Lg7 37.Dxg6+
Kxg6 38.Txb7 Ld4 39.Sg4 Lb6 40.Se5+ Kf5 41.Sf7 Tf8 42.Sd6+ Kg4
43.Tg7+ Kh4 44.Tf7 Td8 45.Sf5+ [(=)]

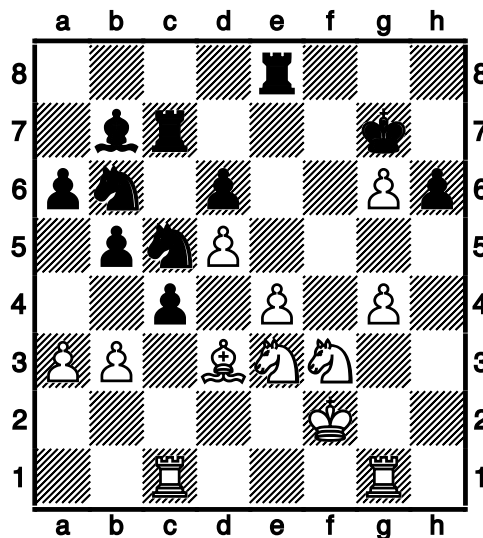
1/2-1/2

Pinneberger Winterturnier 2004

(64) Koester, Gerhard, Dr. – van Riesen, Klaus [C93]

Winterturnier 2004 Pinneberg (5), 04.11.2004

1.e4 e5 2.Sf3 Sc6 3.Lb5 a6 4.La4 Sf6 5.0-0 b5 6.Lb3 Le7 7.Te1 d6
8.c3 0-0 9.h3 Lb7 10.d4 Te8 11.Sbd2 Lf8 12.Lc2 h6 13.a3 Sb8 14.b3
Sbd7 15.Lb2 g6 16.Tc1 Lg7 17.Ld3 Tc8 18.Dc2 Sh5 19.g3 exd4
20.cxd4 c5 21.d5 Lxb2 22.Dxb2 Df6 23.Dxf6 Shxf6 24.g4 Sb6 25.Sh2
Te7 26.Shf1 Tce8 27.Ted1 Kg7 28.Se3 Sfd7 29.Lf1 Sf6 30.f3 Tc8
31.Kf2 Tce8 32.Ld3 Tc8 33.Sdf1 Tec7 34.Sd2 Sfd7 35.f4 La8 36.Le2
Lb7 37.h4 Te8 38.Ld3 Lc8 39.Tg1 Th8 40.Sf3 Te8 41.f5 Lb7 42.fxg6
fxg6 43.h5 c4 44.hxg6 Sc5



45.Sf5+ Kxg6 46.Lb1 Sxe4+ 47.Lxe4 Txe4 48.Sxd6 Tf4 49.bxc4 bxc4
50.Sxb7 Txb7 51.Tcd1 Tbf7 52.Tg3 Sd7 53.Kg2 c3 54.Tc1 Tc4
55.Sh4+ Kg5 56.Sf5 Tf6 57.Tgxc3 Txc3 58.Txc3 Kxg4 59.Se7

1/2-1/2

(65) Retzlaff, Wolfgang – Dangelowski, Peter [B51]

Winterturnier 2004 Pinneberg (5), 04.11.2004

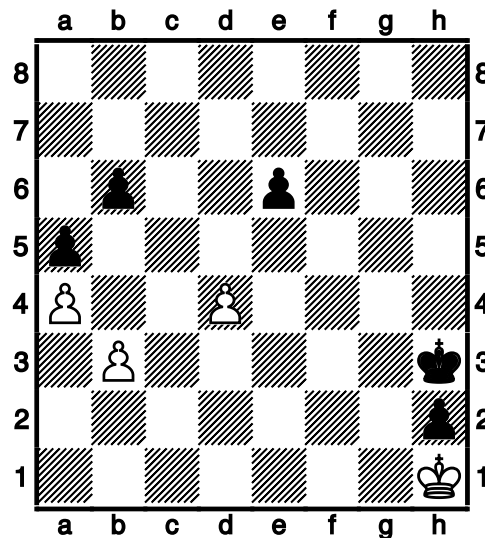
1.e4 c5 2.Sf3 d6 3.Lb5+ Sc6 4.c3 a6 5.Lxc6+ bxc6 6.d3 Db6 7.h3 g6
8.Sbd2 Lg7 9.Sc4 Db7 10.Dc2 Le6 11.b3 Lxc4 12.bxc4 Tb8 13.0-0 e5
14.La3 Dc7 15.Da4 a5 16.Tab1 Txb1 17.Txb1 Se7 18.Db3 0-0 19.Db7
Tc8 20.Da6 Tb8 21.Txb8+ Dxb8 22.Dxa5 Db1+ 23.Kh2 Dxd3 24.Dd8+
Lf8 25.Lc1 1-0

Pinneberger Winterturnier 2004

(66) Schleu, Günther – von Hohenthal, Ludwig [D02]

Winterturnier 2004 Pinneberg (5), 04.11.2004

1.d4 d5 2.Sf3 e6 3.e3 Le7 4.Ld3 Sf6 5.Sbd2 Ld7 6.c4 dxc4 7.Sxc4 Lc6
8.Sce5 Le4 9.0-0 h6 10.Lxe4 Sxe4 11.Dc2 Sf6 12.Ld2 Ld6 13.Tac1 0-0
14.La5 Lxe5 15.Sxe5 Sa6 16.Lxc7 Sxc7 17.Dxc7 Dd5 18.Dc4 De4
19.De2 Tfc8 20.Tfd1 Dd5 21.b3 Se4 22.Dd3 Sd6 23.Tc2 Txc2 24.Dxc2
Tc8 25.Dd2 Se4 26.Db2 Sf6 27.Tc1 Txc1+ 28.Dxc1 Dd8 29.Dc2 Sd5
30.a3 Dc7 31.Dxc7 Sxc7 32.Sd3 b6 33.a4 a5 34.h4 h5 35.g3 g6
36.Kg2 Kg7 37.Kf3 Kf6 38.e4 Ke7 39.Ke3 f5 40.f4 fxe4 41.Kxe4 Kf6
42.Se5 Sd5 43.Kd3 Kf5 44.Sf3 Kg4 45.Se5+ Kxg3 46.Sxg6 Sxf4+
47.Sxf4 Kxf4 48.Kc4 Kg4 49.Kd3 Kxh4 50.Ke3 Kg4 51.Kf2 h4 52.Kg2
h3+ 53.Kh2 Kh4 54.Kh1 Kg3 55.Kg1 h2+ 56.Kh1 Kh3



0-1

(67) Schäfer, Hans – Lösekamm, Heinrich [C23]

Winterturnier 2004 Pinneberg (5), 04.11.2004

1.e4 e5 2.Lc4 Lc5 3.d3 h6 4.Sf3 d6 5.0-0 Sc6 6.Sc3 Sf6 7.Le3 Ld4
8.Lxd4 Sxd4 9.Sxd4 exd4 10.Sd5 0-0 11.Dd2 Le6 12.Sxf6+ Dxf6
13.Lb3 c5 14.f4 Lxb3 15.axb3 De7 16.b4 b6 17.Tae1 Dd7 18.b3 a5
19.bxc5 dxc5 20.f5 f6 21.g4 Df7 22.e5 fxe5 23.Txe5 Tae8 24.Tfe1
Txe5 25.Txe5 Te8 26.De2 Txe5 27.Dxe5 Df6 28.Dd5+ Kh7 29.De4 Kg8
30.Kg2 Kh7 31.h3 h5 32.Df3 Kh6 33.Df4+ Dg5 34.Kg3 Dxf4+ 35.Kxf4
hxg4 36.hxg4 Kh7 37.g5 Kg8 38.Ke5 Kf7 39.Kd5 a4 40.bxa4 g6 41.f6
1-0

Pinneberger Winterturnier 2004

(68) Grothkopp,Dietrich – Rakhmanov,Vsevolod [D51]

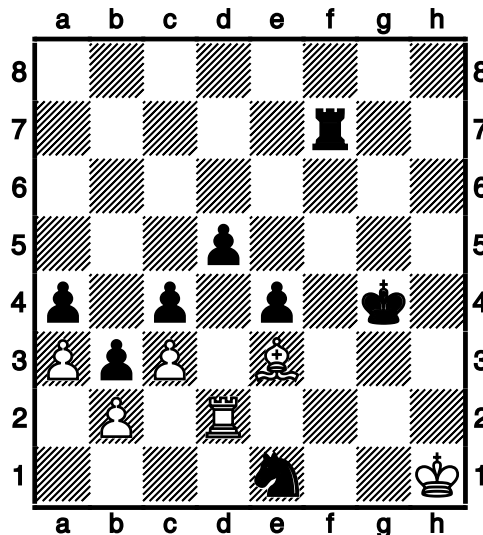
Winterturnier 2004 Pinneberg (5), 04.11.2004

1.d4 d5 2.c4 e6 3.Sc3 Sf6 4.Lg5 Sbd7 5.Sf3 c6 6.e4 dxe4 7.Sxe4
Da5+ 8.Sed2 Se4 9.Le3 Lb4 10.Ld3 Sxd2 11.Lxd2 Lxd2+ 12.Dxd2
Dxd2+ 13.Sxd2 0-0 14.0-0 e5 15.Sf3 exd4 16.Sxd4 Se5 17.Le2 a6
18.Tfe1 c5 19.Sb3 b6 20.Tad1 Le6 21.Sd2 Tad8 22.b3 Sd3 23.Lxd3
Txd3 24.Kf1 Tfd8 25.Ke2 Kf8 26.Sf3 Txd1 27.Txd1 Txd1 28.Kxd1 f6
29.Kd2 g5 30.Kc3 a5 31.a3 Ke7 32.b4 a4 33.Se1 Lf5 34.Sd3 Lxd3
35.Kxd3 f5 36.b5 Ke6 37.f3 Ke5 38.g3 h5 39.Ke3 g4 40.f4+ Kf6
41.Kd3 Kg6 42.Ke3 h4 43.Kd3 $\frac{1}{2}$ - $\frac{1}{2}$

(69) Himmelstaub,Werner – Iwanow,Thomas [C05]

Winterturnier 2004 Pinneberg (5), 04.11.2004

1.e4 e6 2.d4 d5 3.Sd2 Sf6 4.e5 Sfd7 5.Sgf3 c5 6.c3 Sc6 7.Sb3 Le7
8.h4 h6 9.Lf4 a6 10.Dd2 c4 11.Sc1 b5 12.a3 Lb7 13.g4 a5 14.Th3 b4
15.g5 hxg5 16.Lxg5 f6 17.exf6 gxf6 18.Lf4 Kf7 19.h5 Dg8 20.Tg3 Dh7
21.h6 Tag8 22.Lh3 De4+ 23.De3 Txxg3 24.fxxg3 Dxe3+ 25.Lxe3 b3
26.g4 Sf8 27.Kf2 Sh7 28.Se2 Sg5 29.Lg2 Txxh6 30.Tf1 Se4+ 31.Ke1
Th8 32.Sd2 Sxd2 33.Lxd2 Kg7 34.Sf4 Lc8 35.Kf2 Ld6 36.Sh5+ Kg6
37.Ke2 Tf8 38.Sf4+ Lxf4 39.Lxf4 a4 40.Th1 Tg8 41.Lf3 Sd8 42.Kf2 Sf7
43.Te1 Th8 44.Kg3 Sg5 45.Lg2 Ld7 46.Ld6 Sf7 47.Lf4 Te8 48.Ld2 Lc6
49.Lf4 e5 50.dxe5 fxe5 51.Le3 Sd6 52.Td1 e4 53.Th1 Sf7 54.Tf1 Ld7
55.Ld4 Se5 56.Tf2 Sxxg4 57.Te2 Se5 58.Tf2 Sg4 59.Te2 Se5 60.Te1
Sd3 61.Te2 Tf8 62.Le3 Tf7 63.Ld4 Kh5 64.Lh1 Kg6 65.Lg2 Kh5 66.Le3
Lg4 67.Td2 Lf3 68.Ld4 Lxxg2 69.Kxxg2 Kg4 70.Le3 Se1+ 71.Kh1



Pinneberger Winterturnier 2004

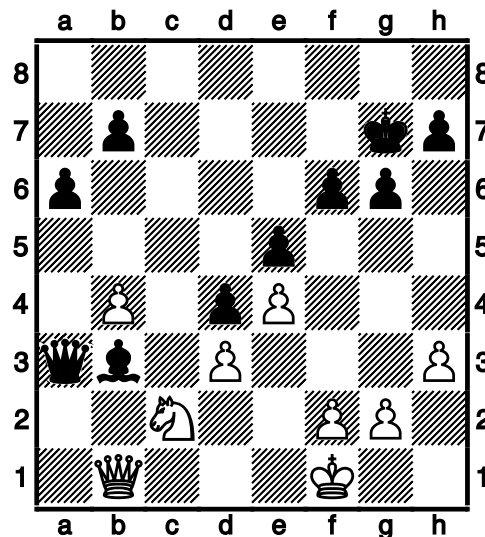
71...Th7+ 72.Th2 Txx2+ 73.Kxx2 Kf3

0-1

(70) Hadlich, Winfried – Griwenka, Volker [A06]

Winterturnier 2004 Pinneberg (5), 04.11.2004

1.Sf3 d5 2.a3 g6 3.c4 c6 4.cxd5 cxd5 5.Sc3 Lg7 6.e4 d4 7.Sd5 Sc6
8.Lb5 e6 9.Sb4 Sge7 10.Da4 Ld7 11.d3 a6 12.Lxc6 Sxc6 13.Lg5 Db6
14.Sxc6 Lxc6 15.Dc2 0-0 16.Dd2 Tfe8 17.0-0 Tac8 18.b4 e5 19.Lh6
Ld7 20.Tac1 f6 21.Lxg7 Kxg7 22.h3 Te6 23.Txc8 Lxc8 24.Tc1 Tc6
25.Txc6 Dxc6 26.Se1 Dc3 27.Dd1 Dxa3 28.Db1 Le6 29.Kf1 Lb3
30.Sc2



30...Da4 31.Sa1 La2 32.Dc2 Dxc2 33.Sxc2 Lb1 34.Se1 f5 35.f3 Kf6
36.Ke2 Ke7 37.Kd2 f4 38.Kc1 La2 39.Kb2 Le6 40.Sc2 g5 41.Kc1 Kd6
42.Kd2 Lb3 43.Sa3 b6 44.Ke2 Kc6 45.Kf2 a5 46.bxa5 bxa5 47.g3 Kc5
48.h4 h6 49.hxg5 hxg5 50.gxf4 gxf4 51.Ke2 Kb4 52.Sb1 a4

0-1

Pinneberger Winterturnier 2004

(71) Schmidt,Günter – Sengbusch,Gerhard [D00]

Winterturnier 2004 Pinneberg (5), 04.11.2004

1.d4 d5 2.Lf4 Sf6 3.e3 h6 4.Le5 e6 5.Df3 Sc6 6.Lxf6 Dxf6 7.Dxf6 gxf6
8.a3 a6 9.Se2 Ld6 10.Sd2 Ld7 11.g3 Ke7 12.Lg2 Sd8 13.c4 c6 14.c5
Lc7 15.0-0 Tb8 16.b4 b6 17.e4 bxc5 18.exd5 cxd5 19.Tfc1 c4 20.Sb1
Ld6 21.Sbc3 h5 22.h4 Tg8 23.Lf3 Th8 24.Lg2 f5 25.f4 f6 26.Kh2 Sf7
27.Lf3 Lc7 28.Sg1 Sd6 29.Te1 Kf7 30.Lg2 Sb5 31.Sxb5 Txb5 32.Se2
Kg6 33.Sc3 Tb6 34.Lf3 Thb8 35.Ld1 Td6 36.La4 Lb5 37.Lxb5 axb5
38.Teb1 Tdb6 39.Te1 Kf7 40.Teb1 Ld6 41.Tb2 Ta8 42.Tba2 Tab8
43.Te1 Tg8 44.Tg2 Lb8 45.Ta1 Td8 46.Tb1 Tdd6 47.Te1 La7 48.Tc2
Tb7 49.Ta1 Lxd4 50.Td1 Lxc3 51.Txc3 d4 52.Tc2 Tc7 53.Tcd2 e5
54.fxe5 fxe5 55.Kg2 c3 56.Td3 c2 57.Tc1 e4 58.Td2 d3 59.Kf2 Tg6
60.Kg2 Tc3 61.Tf2 Ke6 62.Td2 Txa3 63.Te1 Tb3 64.Tf2 Txb4 65.Td2
Kd5 66.Tf1 Tf6 67.Tc1 Tb1 68.Tcxc2 Kd4 69.Tb2 Txb2 70.Txb2 Kc4
71.Kf1 Tg6 72.Kf2 b4 73.Ta2 Kb5 74.Tb2 Tc6 75.Ke3 Kc4 76.Kd2 Tg6
77.Tb1 Txg3 78.Tc1+ Kd4 79.Te1 Tg2+ 80.Kd1

0-1

(72) Kuhn,Gerd – Hochreiner,Jürgen [A00]

Winterturnier 2004 Pinneberg (5), 04.11.2004

1-0

(73) Singh,Gurpreet – Singh,Nanak [C50]

Winterturnier 2004 Pinneberg (5), 29.11.2004

1.e4 e5 2.Sf3 Sc6 3.Lc4 Lc5 4.d3 h6 5.Le3 Lxe3 6.fxe3 Sf6 7.Sc3 d6
8.h3 a6 9.0-0 0-0 10.Sd5 Sa5 11.Sxf6+ Dxf6 12.Lb3 Sxb3 13.axb3 Dg6
14.Kh2 f5 15.exf5 Txf5 16.Sh4 Txf1 17.Sxg6 Txd1 18.Txd1 Kf7 19.Sh4
Ke7 20.Tf1 Le6 21.g4 d5 22.d4 exd4 23.exd4 Kd7 24.Sg6 Kd6 25.b4
b6 26.Te1 Te8 27.Sf4 Ld7 28.Txe8 Lxe8 29.c3 c5 30.bxc5+ bxc5
31.dxc5+ Kxc5 32.b3 Lf7 33.Se2 Lg6 34.Kg3 a5 35.Sd4 Lf7 36.Kf4 a4
37.bxa4 Kc4 38.a5 Kxc3 39.a6

1-0

Pinneberger Winterturnier 2004

(74) Griwenka, Volker – Dörge, Olaf [B03]

Winterturnier 2004 Pinneberg (6), 11.11.2004

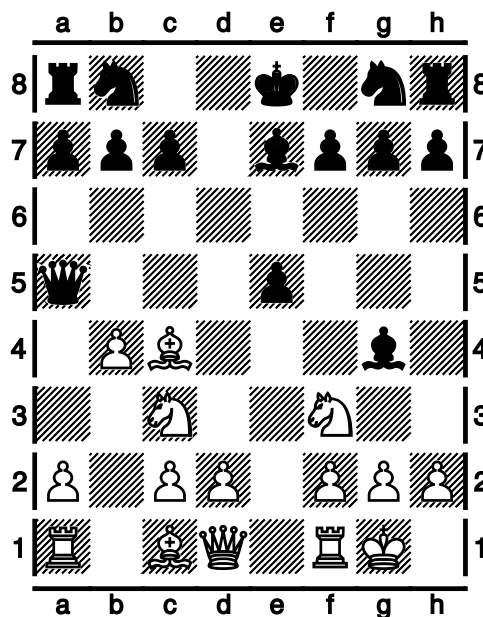
1.e4 Sf6 2.e5 Sd5 3.d4 d6 4.c4 Sb6 5.exd6 cxd6 6.Sc3 g6 7.Le3 Lg7
8.Dd2 Sc6 9.Le2 0-0 10.Sf3 Lg4 11.b3 Te8 12.Tc1 Sd7 13.d5 Sce5
14.Sxe5 Sxe5 15.0-0 Lxe2 16.Dxe2 Dc8 17.h3 Df5 18.f4 Sd3 19.Tcd1
Sc5 20.g4 Dc8 21.Dc2 h5 22.Lxc5 Dxc5+ 23.Kg2 hxg4 24.hxg4 e6
25.Se4 Db6 26.Tfe1 exd5 27.Txd5 Te6 28.f5 gxf5 29.gxf5 Th6 30.Dd2
Dd8 31.Txd6 Dh4 32.Txh6 Lxh6 33.Df2 Dxf2+ 34.Kxf2 Td8 35.Te2 Lc1
36.Kf3 Td3+ 37.Kf2 Kg7 38.Sc5 Td4 39.Sxb7 Tf4+ 40.Kg2 Txf5 41.c5
La3 42.c6 Tg5+ 43.Kf3 Kf6 44.c7 Tf5+ 45.Ke4 Te5+ 46.Kd3 Td5+
47.Kc4 Td1 48.Tc2

1-0

(75) Hochreiner, Jürgen – Brückner, Gerhard [B01]

Winterturnier 2004 Pinneberg (6), 11.11.2004

1.e4 d5 2.exd5 Dxd5 3.Sf3 e5 4.Sc3 Da5 5.Lc4 Le7 6.0-0 Lg4 7.b4



7...Lxb4 8.Lxf7+ Kf8 9.h3 Lxc3 10.dxc3 Ld7 11.Lb3 Sf6 12.Te1 Sc6
13.a4 Ke7 14.Sxe5 Sxe5 15.Dd4 Kd8 16.Txe5 Db6 17.Dd3 Te8 18.Lf4

Pinneberger Winterturnier 2004

Txe5 19.Lxe5 Tc8 20.Td1 Dc6 21.Lxf6+ gxf6

1-0

(76) Brückner, Gerhard – Koester, Gerhard, Dr. [C47]

Winterturnier 2004 Pinneberg (6), 11.11.2004

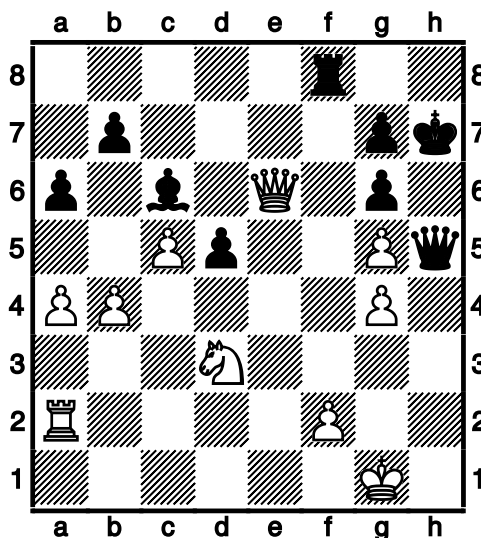
1.e4 e5 2.Sf3 Sc6 3.Sc3 Sf6 4.d4 Lb4 5.Lg5 h6 6.Lh4 De7 7.Le2
exd4 8.Sxd4 g5 9.Lg3 Dxe4 10.Sdb5 0-0 11.Sxc7 Sd4 12.0-0 Lxc3
13.Ld3 Dc6 14.bxc3 Se6 15.Sxa8 Dxc3 16.Df3 Sd4 17.Dd1 Se6 18.Te1
Dc6 19.Df3 Dxf3 20.gxf3 d5 21.Sc7 Sd4 22.Te3 Sf5 23.Lxf5 Lxf5
24.Le5 Sd7 25.Sxd5 Lxc2 26.Tc1 La4 27.Tc7 f6 28.Txd7 fxe5 29.Txb7
Ld1 30.Txe5 Lxf3 31.Tee7 Tf7 32.Txf7 Lxd5 33.Tg7+ Kf8 34.Txa7

1-0

(77) van Riesen, Klaus – Schmidt, Roland [B14]

Winterturnier 2004 Pinneberg (6), 11.11.2004

1.e4 c6 2.d4 d5 3.exd5 cxd5 4.c4 Sf6 5.Sc3 e6 6.Sf3 Le7 7.Ld3 0-0
8.0-0 Sbd7 9.c5 a6 10.Lf4 Te8 11.Te1 Sf8 12.Se5 Sg6 13.Sxg6 hxg6
14.h3 Ld7 15.b4 Sh7 16.a4 Lf6 17.Le5 Lxe5 18.dxe5 Dh4 19.Sa2 Tf8
20.Lf1 f6 21.g3 Dh6 22.Lg2 Tf7 23.Sc1 fxe5 24.Txe5 Taf8 25.Sd3 Sg5
26.h4 Sf3+ 27.Lxf3 Txf3 28.Tg5 Lc6 29.Ta2 T3f5 30.Dg4 Txd5 31.hxg5
Dh5 32.Dxe6+ Kh7 33.g4



Pinneberger Winterturnier 2004

33...Te8 34.gxh5 Txe6 35.hxg6+ Txg6 36.f4 Te6 37.Se5 g6 38.Kf2 Kg7
39.Ke3 Te8 40.Kd4 Td8 41.Sxc6 bxc6 42.b5 axb5 43.axb5 cxb5
44.Ta7+ Kg8 45.Tb7 Tf8 46.c6 Txf4+ 47.Kxd5 Tf5+ 48.Kd6 Tf1 49.c7
Td1+ 50.Ke6 Te1+ 51.Kf6 1-0

(78) Retzlaff,Wolfgang – Grothkopp,Dietrich [B14]

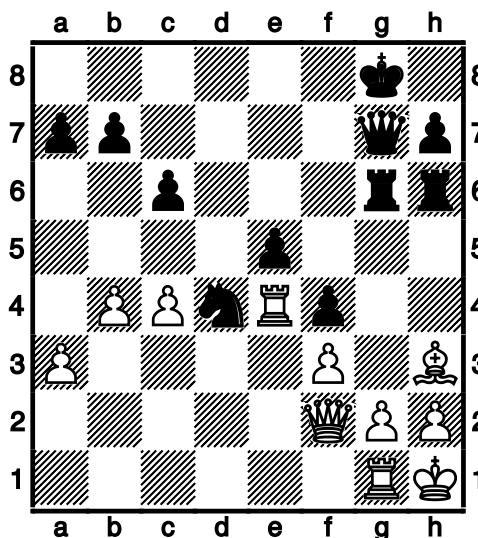
Winterturnier 2004 Pinneberg (6), 11.11.2004

1.e4 c6 2.d4 d5 3.exd5 cxd5 4.c4 Sf6 5.Sc3 e6 6.c5 a6 7.Sf3 Sc6
8.Ld3 g6 9.Lg5 h6 10.Lh4 Lg7 11.h3 g5 12.Lg3 Sh5 13.Ld6 Sf4 14.g3
Sxd3+ 15.Dxd3 b6 16.a3 Sa5 17.Sd2 Sc6 18.Sb3 Lf8 19.Lxf8 Kxf8
20.De3 Kg7 21.f4 ½-½

(79) Rakhmanov,Vsevolod – Lorenz,Jens [E90]

Winterturnier 2004 Pinneberg (6), 11.11.2004

1.c4 Sf6 2.Sf3 g6 3.Sc3 Lg7 4.d4 d6 5.e4 0-0 6.Ld3 Sc6 7.a3 Lg4
8.Le2 e5 9.dxe5 dxe5 10.Lg5 Lxf3 11.Lxf3 Sd4 12.Le2 c6 13.0-0 Dc7
14.b4 Tad8 15.Db1 Se6 16.Le3 Td7 17.Db2 Tfd8 18.Tfd1 Sd4 19.Kf1
Se8 20.Lg4 f5 21.Lh3 Tf7 22.Lg5 Lf6 23.Lxf6 Txf6 24.Kg1 Sg7 25.Se2
Sge6 26.Sxd4 Sxd4 27.exf5 gxf5 28.Te1 Tg6 29.Te3 f4 30.Te4 Dg7
31.Kh1 Th6 32.Tg1 Tdd6 33.f3 Tdg6 34.Df2



34...Th5 35.Lg4 Txg4 36.g3 Tg6 37.g4 Th3 38.Txd4 exd4 39.Te1 Tgh6
40.Te8+ Kf7 41.Te7+ Kxe7 42.De2+ Te6 0-1

Pinneberger Winterturnier 2004

(80) Iwanow,Thomas – Tornier,Siegfried [D37]

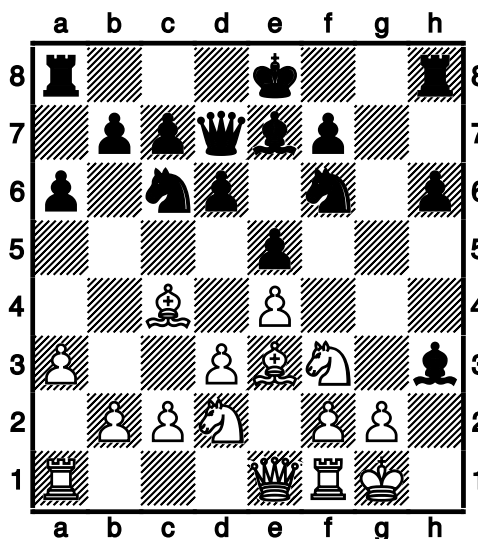
Winterturnier 2004 Pinneberg (6), 11.11.2004

1.d4 d5 2.Sf3 Sf6 3.c4 e6 4.Sc3 Le7 5.Lf4 a6 6.e3 0-0 7.Ld3 dxc4
8.Lxc4 b5 9.Ld3 Lb7 10.Dc2 g6 11.Tc1 Kg7 12.h3 Sh5 13.Le5+ Lf6
14.Le4 Lxe4 15.Sxe4 Lxe5 16.dxe5 Kg8 17.Dxc7 Dd5 18.Sd6 Sg7
19.0-0 a5 20.a3 b4 21.Tfd1 Db3 22.Dc2 Dxc2 23.Txc2 Sd7 24.Tc7 Sb6
25.e4 Se8 26.Sxe8 Tfxe8 27.axb4 axb4 28.Tb7 Teb8 29.Txb8+ Txb8
30.b3 Tc8 31.Td6 Tb8 32.Tc6 Sd7 33.Tc7 Sb6 34.Sg5 Tf8 35.f4 h6
36.Sf3 Tb8 37.Kf2 Kf8 38.Ke2 Ke8 39.Sd2 Sd7 40.Sc4 Kd8 41.Tc6
Ta8 42.Sd2 Ta5 43.Tc4 Tb5 44.Td4 Ke7 45.Ke3 Sc5 46.Tc4 f6
47.exf6+ Kxf6 48.e5+ Ke7 49.g4 Kd7 50.Td4+ Ke7 51.h4 Tb7 52.Tc4
Tb5 53.Td4 Tb7 54.Td6 Sd7 55.Tc6 Sb6 56.Td6 Sd5+ 57.Kf3 Tb5
58.Sc4 Tb7 59.f5 Tc7 60.Txe6+ 1-0

(81) Kaland,Joachim – Metzner,Arne [C42]

Winterturnier 2004 Pinneberg (6), 11.11.2004

1.e4 e5 2.Sf3 Sf6 3.Sc3 d6 4.Lc4 Lg4 5.d3 Le7 6.h3 Lh5 7.0-0 h6
8.Ld2 a6 9.a3 Sc6 10.Le3 Dd7 11.Sb1 g5 12.Sbd2 g4 13.hxg4 Lxg4
14.De1 Lh3



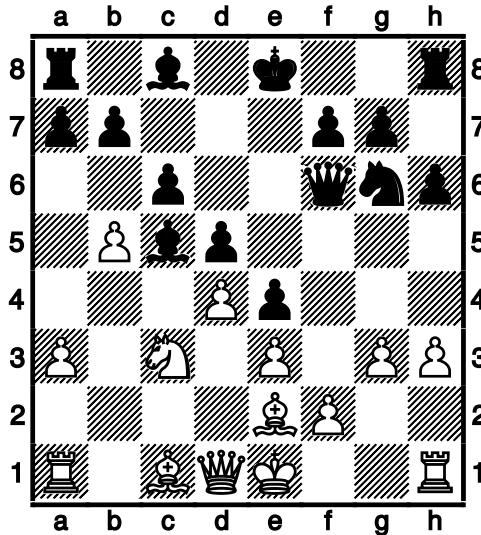
15.Sh4 Tg8 16.f3 Sh5 17.Kh2 Lxh4 18.Dxh4 Txg2+ 19.Kh1 Sg3+
0-1

Pinneberger Winterturnier 2004

(82) Schmoll, Peter – Singh, Nanak [D30]

Winterturnier 2004 Pinneberg (6), 11.11.2004

1.d4 d5 2.c4 e6 3.a3 h6 4.Sf3 Sc6 5.c5 e5 6.b4 e4 7.Se5 Df6 8.Sxc6
Dxc6 9.h3 Df6 10.e3 Se7 11.Le2 Sg6 12.g3 Le7 13.Sc3 c6 14.b5 Lxc5

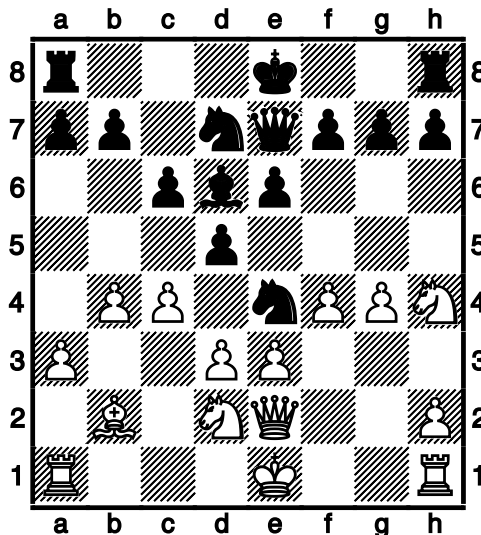


15.Lb2 Lb6 16.a4 La5 17.Db3 0-0 18.La3 Td8 19.Lb4 Lb6 20.Dd1 c5
21.dxc5 Lxc5 22.Db3 Lxb4 23.Dxb4 Le6 24.Td1 Tac8 25.Td4 Se5
26.g4 a6 27.f4 exf3 28.Lf1 f2+ 29.Kd2 Sf3+ 30.Kc1 Sxd4 31.exd4 Df3
32.Th2 0-1

(83) Lüttig, Hendrik – Singh, Gurpreet [A00]

Winterturnier 2004 Pinneberg (6), 11.11.2004

1.b4 d5 2.Lb2 Sf6 3.e3 Lf5 4.f4 e6 5.a3 Se4 6.Sf3 Sd7 7.d3 Sef6 8.Sh4
Lg4 9.Le2 Lxe2 10.Dxe2 Ld6 11.Sd2 De7 12.c4 c6 13.g4 Se4



Pinneberger Winterturnier 2004

14.Sdf3 h6 15.Sg2 Sef6 16.Sd4 dxc4 17.dxc4 c5 18.Sb5 cxb4
19.Sxd6+ Dxd6 20.0-0 bxa3 21.Lxa3 Dc6 22.Tfd1 Se4 23.Td4 Sdc5
24.Se1 Sb3 25.Tdd1 Sxa1 26.Txa1 Td8 27.Sf3 Sc3 28.Df1 De4 29.Lc5
b6 30.Ld4 Td7 31.Se5 Tc7 32.Df2 f6 33.Lxc3 fxe5 34.Lxe5 Tf7 35.De2
0-0 36.Ld6 Td8 37.Td1 Tfd7 38.Td4 Dc6 39.Le5 Txd4 40.exd4 Da4
41.Kf2 Tc8 42.Lxg7 Dxc4 43.De5 Da2+ 0-1

(84) Retzlaff,Jennifer – Schäfer,Hans [C41]

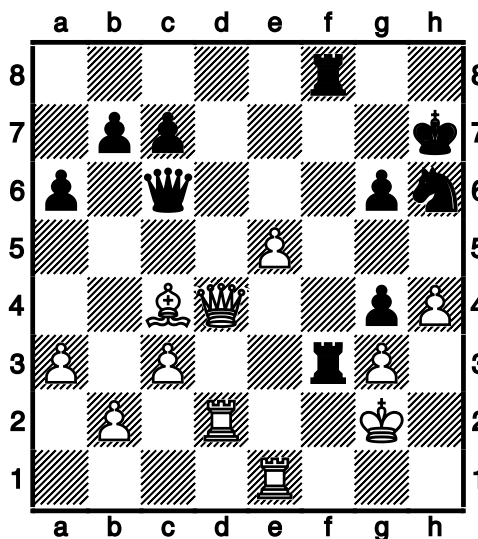
Winterturnier 2004 Pinneberg (6), 11.11.2004

1.e4 e5 2.Sf3 d6 3.Sc3 Sc6 4.d3 Le7 5.Le3 Lg4 6.Le2 Lxf3 7.Lxf3 Sf6
8.0-0 0-0 9.Sd5 Sxd5 10.exd5 Sd4 11.Lxd4 exd4 12.De2 Lf6 13.g3 Te8
14.Dd1 De7 15.De1 Df8 16.Dd1 Te5 17.Lg2 Tae8 18.Dd2 Te2 19.Dd1
Lg5 20.Lf3 Td2 21.Dc1 $\frac{1}{2}$ - $\frac{1}{2}$

(85) Remstedt,Ute – von Hohenthal,Ludwig [C50]

Winterturnier 2004 Pinneberg (6), 11.11.2004

1.e4 e5 2.Sf3 Sc6 3.Lc4 d6 4.d3 Le7 5.h3 h6 6.Sc3 a6 7.Le3 Sf6 8.0-0
0-0 9.a3 Sh7 10.Sd5 Ld7 11.Dd2 Le6 12.Tad1 Sg5 13.Sxg5 Lxg5
14.Lxg5 hxg5 15.Tfe1 Sd4 16.c3 Lxd5 17.Lxd5 Sc6 18.Te3 Kh7
19.Tg3 f6 20.De3 Tb8 21.Df3 g6 22.Dg4 Se7 23.Lb3 Sg8 24.h4 Sh6
25.Dh3 g4 26.Dh2 Dd7 27.f3 f5 28.fxg4 fxg4 29.Td2 Tf4 30.Te3 Tbf8
31.Te1 Dc8 32.g3 Tf3 33.Ld1 T3f6 34.De2 De6 35.De3 Df7 36.Le2 Tf2
37.Tc2 Db3 38.Td2 De6 39.d4 d5 40.dxe5 dxe4 41.Dxe4 T2f7 42.Lc4
Db6+ 43.Dd4 Tf3 44.Kg2 Dc6



45.Dd7+ T3f7+ 46.Dxc6 bxc6 47.Lxf7 Txf7 48.e6 Te7 49.Td7 Sf5 1-0

Pinneberger Winterturnier 2004

(86) Sengbusch, Gerhard – Lösekamm, Heinrich [C44]

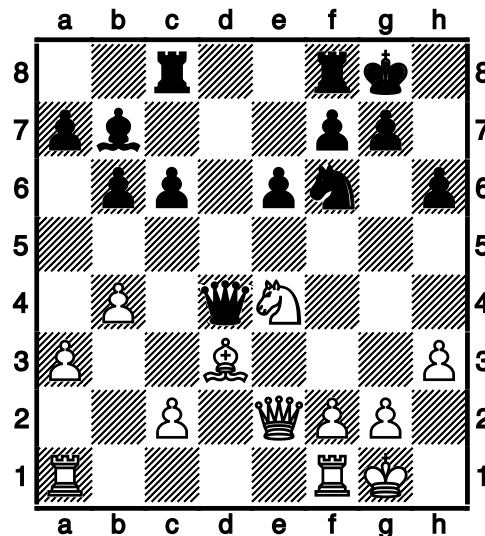
Winterturnier 2004 Pinneberg (6), 11.11.2004

1.e4 e5 2.Sf3 Sc6 3.a3 Sf6 4.Sc3 a6 5.h3 Lc5 6.Lc4 h6 7.d3 d6 8.Ld2
De7 9.g4 Le6 10.Lxe6 Dxe6 11.g5 Sg8 12.Sd5 0-0-0 13.De2 h5 14.Le3
Lxe3 15.Dxe3 g6 16.b4 Kd7 17.c4 Ta8 18.Kd2 Sb8 19.Ke2 f6 20.h4 f5
21.Sd2 f4 22.Dh3 Dxh3 23.Txh3 Sc6 24.Sf3 Sce7 25.Sxe7 Sxe7
26.Td1 b6 27.d4 Ke6 28.Thh1 a5 29.b5 c6 30.d5+ cxd5 31.cxd5+ Kd7
32.Tc1 Tac8 33.a4 Tc5 34.Thd1 Thc8 35.Txc5 Txc5 36.Sd2 Tc3 37.f3
Ta3 38.Sc4 Ta2+ 39.Td2 Txd2+ 40.Kxd2 Sc8 $\frac{1}{2}$ - $\frac{1}{2}$

(87) Torborg, Karl-Dieter – Schleu, Günther [D00]

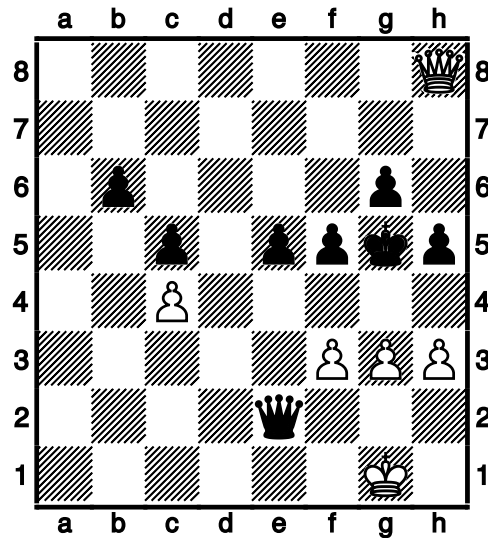
Winterturnier 2004 Pinneberg (6), 11.11.2004

1.d4 d5 2.Lf4 Sd7 3.Sc3 c6 4.e3 Sgf6 5.h3 e6 6.Ld3 Le7 7.Sf3 b6 8.a3
Lb7 9.b4 Tc8 10.De2 h6 11.Se5 0-0 12.0-0 Ld6 13.Sxd7 Dxd7 14.Lxd6
Dxd6 15.e4 dxe4 16.Sxe4 Dxd4



17.Sxf6+ Dxf6 18.La6 Lxa6 19.Dxa6 Tc7 20.De2 Td8 21.Tad1 Tcd7
22.Txd7 Txd7 23.Td1 Dd8 24.Txd7 Dxd7 25.c4 Dd4 26.Kh2 Kf8
27.Dc2 Ke7 28.f3 h5 29.a4 g6 30.a5 Dd6+ 31.Kh1 Dxb4 32.axb6 axb6
33.De4 Dd6 34.De3 c5 35.Dg5+ Kd7 36.Df6 De7 37.Da1 Dd6 38.Da7+
Dc7 39.Da4+ Ke7 40.Db3 Dd6 41.De3 Dd4 42.Dg5+ Kd7 43.Dc1 e5
44.Dc2 Ke6 45.Db3 Dd6 46.Db5 f5 47.De8+ Kf6 48.Dh8+ Kg5 49.g3
Dd1+ 50.Kg2 De2+ 51.Kg1

Pinneberger Winterturnier 2004

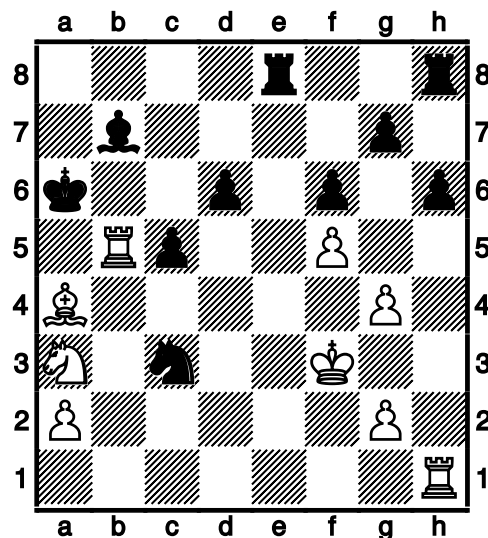


51...Dxc4 52.h4+ 1-0

(88) Zedler, Ernst – Dammann, Rudolf [C61]

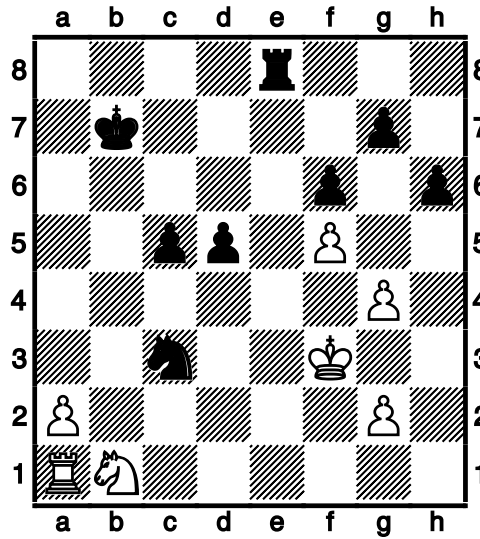
Winterturnier 2004 Pinneberg (6), 11.11.2004

1.e4 e5 2.Sf3 Sc6 3.Lb5 Sd4 4.Sxd4 exd4 5.d3 c6 6.Lc4 b5 7.Lb3 a5
8.c4 dxc3 9.bxc3 a4 10.Lc2 Lc5 11.d4 Lb6 12.La3 Dg5 13.Df3 Lb7
14.Dg3 Dxc3 15.hxc3 0-0-0 16.f3 d6 17.Lc1 h6 18.g4 f6 19.f4 Se7
20.f5 La5 21.Ld2 Kc7 22.Sa3 Tde8 23.Kf2 Kb6 24.Lf4 Lxc3 25.Tab1
Lxd4+ 26.Le3 Lxe3+ 27.Kxe3 Sd5+ 28.Kf3 Sc3 29.Tb4 c5 30.Tb2
Sxe4 31.Txb5+ Ka6 32.Lxa4 Sd2+ 33.Kf2 Se4+ 34.Kf3 Sc3+



Pinneberger Winterturnier 2004

35.Txb7 Kxb7 36.Lxe8 Txe8 37.Ta1 d5 38.Sb1

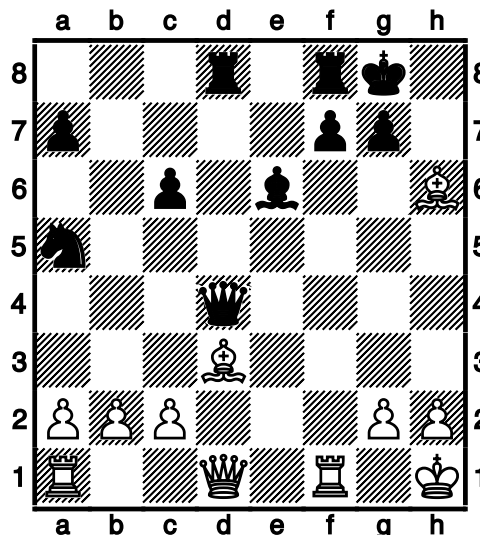


38...Sxb1 39.Txb1+ Kc6 40.a4 Ta8 41.Ta1 Ta5 42.Ke3 Kb6 43.Tb1+ Ka6 44.Ta1 Kb6 45.Tb1+ Ka7 46.Ta1 Ta6 47.a5 Tc6 48.Kd3 Ka6 49.Kc3 Kb5 50.Kd3 Ta6 51.Kc3 Txa5 52.Tb1+ Kc6 53.Tb8 Ta3+ 54.Kb2 Tg3 55.Tc8+ Kb5 56.Tb8+ Kc4 0-1

(89) Lemke, Detlef – Koester, Gerhard, Dr. [C59]

Winterturnier 2004 Pinneberg (7), 18.11.2004

1.e4 e5 2.Lc4 Sf6 3.Sf3 Sc6 4.Sg5 d5 5.exd5 Sa5 6.Lb5+ c6 7.dxc6 bxc6 8.Le2 h6 9.Sf3 e4 10.Se5 Le6 11.d4 Ld6 12.Sc3 0-0 13.0-0 Dc7 14.f3 Lxe5 15.dxe5 Dxe5 16.Sxe4 Sxe4 17.fxe4 Dxe4 18.Ld3 Dd4+ 19.Kh1 Tad8 20.Lxh6



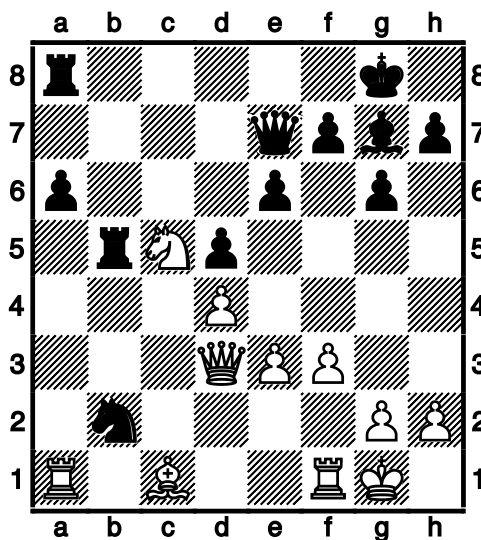
Pinneberger Winterturnier 2004

20...Sc4 21.Dh5 Td5 22.Lg5 f5 23.Tf4 Dxb2 24.Te1 Te5 25.Tef1 Se3
26.Tg1 Ld5 27.h3 Sxg2 28.Txg2 Te1+ 29.Kh2 Da1 30.Tff2 Lxg2
31.Kxg2 Tg1+ 32.Kf3 Dd1+ 33.Kf4
0-1

(90) Hadlich, Winfried – Dörge, Olaf [A45]

Winterturnier 2004 Pinneberg (7), 18.11.2004

1.d4 Sf6 2.Sd2 d5 3.c4 c6 4.Sgf3 g6 5.cxd5 cxd5 6.e3 Lg7 7.Lb5+ Ld7
8.Da4 0-0 9.Se5 a6 10.Lxd7 Sbx d7 11.Sdf3 b5 12.Db3 Sxe5 13.Sxe5
Se4 14.0-0 e6 15.Sd3 De7 16.f3 Sd6 17.a4 Sc4 18.axb5 Tfb8 19.Sc5
Txb5 20.Dd3 Sxb2??



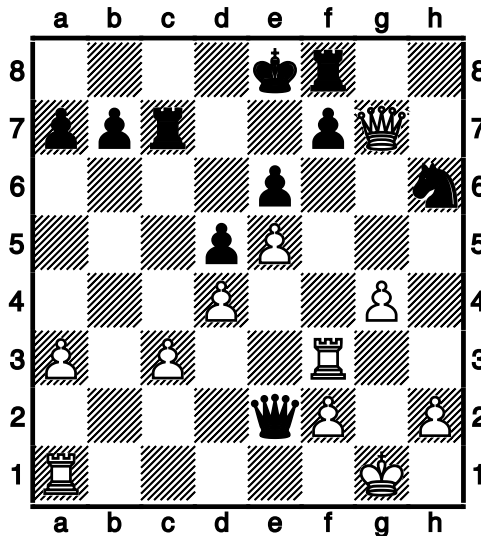
21.Dxb5 axb5 22.Txa8+ Lf8 23.Lxb2 Kg7 24.Tb8 Dg5 25.f4 Dg4
26.Te1 h5 27.Txb5 g5 28.fxg5 Ld6 29.Lc3 Dh4 30.h3 Dg3 31.Tb7 Kg6
32.Sd3 Dh2+ 33.Kf1 Dh1+ 34.Kf2 Dh2 35.Se5+ Lxe5 36.dxe5 h4
37.Te2 Dg3+ 38.Kg1 Dxg5 39.Ld4 Dh5 40.Tf2 Dd1+ 41.Tf1 De2
42.Tbxf7 Dc2 43.T1f6+ Kg5 44.Tg7+ Kh5 45.Te7 Db1+ 46.Kh2 De1
47.Texe6 Kg5 48.Tb6 Dd1 49.Tb2 Dd3 50.Tbf2 De4 51.e6 Dd3 52.e7
Db1 53.T2f5+ Dxf5 54.Txf5+ Kxf5 55.e8D Kg5 56.Df7 Kh6 57.g4
hxg3+ 58.Kxg3 Kg5 59.h4+
1-0

Pinneberger Winterturnier 2004

(91) Brückner, Gerhard – Griwenka, Volker [C02]

Winterturnier 2004 Pinneberg (7), 18.11.2004

1.e4 e6 2.d4 d5 3.e5 c5 4.c3 Sc6 5.Sf3 Ld7 6.Ld3 cxd4 7.cxd4 Sb4
8.0-0 Sxd3 9.Dxd3 Db6 10.Sc3 Tc8 11.Te1 Lb4 12.Lg5 Se7 13.a3
Lxc3 14.bxc3 Lb5 15.De3 Sf5 16.Df4 h6 17.g4 hxg5 18.Sxg5 Sh6
19.Te3 Da6 20.Th3 Tc7 21.Sf3 Tf8 22.Dg5 Le2 23.Dxg7 Lxf3 24.Txf3
De2



25.Tg3 [25.Kg2]

25...Dd2 26.Tb1 b6 27.Th3 Tg8 28.Dxh6 Txc3 29.Kh1 Dxc3
30.Txh6 Txc3 31.Th8+ Ke7 32.Ta8 Tc7 33.a4 Txd4 34.a5 Te4
35.axb6 axb6 36.Txb6 Txe5 37.Tb2 Tg5 38.Ta1 Kf6 39.h3 Kf5
40.Ta3 d4 41.Kh2 Kf4 42.Td2 e5 43.Tdd3 f5 44.h4 Th7
45.Th3 Tg4 46.h5 Thg7 47.Taf3+ Kg5 48.h6 Th7 49.Kh1 f4 0-1

(92) Retzlaff, Wolfgang – Himmelstaub, Werner [C30]

Winterturnier 2004 Pinneberg (7), 18.11.2004

1.f4 d6 2.e4 e5 3.Sf3 Sc6 4.f5 g6 5.fxc6 hxg6 6.Lb5 Ld7 7.Lxc6 Lxc6
8.d3 Le7 9.Le3 b6 10.Dd2 Sf6 11.h3 Sg4 12.Tf1 Sf6 13.Df2 Sh5
14.Sg5 f6 15.Sf3 Dd7 16.Sh4 Tg8 17.g4 Sf4 18.Lxf4 exf4 19.Sd2 0-0-0
20.Sg2 g5 21.0-0-0 d5 22.exd5 Lxd5 23.Sb3 a5 24.c4 Dc6 25.Se1 Lf7
26.Sd4 Dd7 27.Sec2 Lc5 28.Df3 Da4 29.Sc6 Tde8 30.d4 Lg6 31.Sa7+
Kb8 32.Sc6+ Kc8 33.Sa7+ 1/2-1/2

Pinneberger Winterturnier 2004

(93) Grothkopp,Dietrich – Iwanow,Thomas [D53]

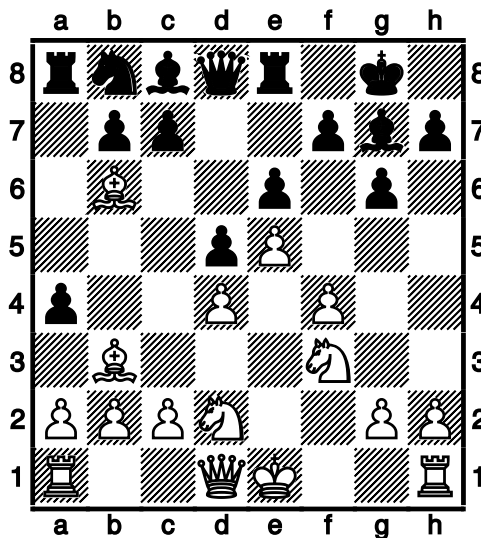
Winterturnier 2004 Pinneberg (7), 18.11.2004

1.d4 d5 2.c4 Sf6 3.Sc3 e6 4.Lg5 Le7 5.e3 h6 6.Lh4 Sbd7 7.Sf3 0-0
8.c5 c6 9.Ld3 Sh7 10.Lxe7 Dxe7 11.Dc2 Shf6 12.b4 e5 13.dxe5 Sxe5
14.Sd4 Sxd3+ 15.Dxd3 De5 16.h3 Te8 17.a4 Dg5 18.g4 Se4 19.Sxe4
Txe4 20.Kd2 Ld7 21.f3 Te7 22.h4 De5 23.Tag1 Tae8 24.Sc2 h5 25.f4
Db2 26.Tb1 Df6 27.g5 Df5 28.Dc3 De4 29.Tbe1 Dg2+ 30.Kc1 Lf5
31.Thg1 Dxc2+ 32.Dxc2 Lxc2 33.Kxc2 Txe3
0-1

(94) Mungard,Jens-Uwe – Lüttig,Hendrik [B06]

Winterturnier 2004 Pinneberg (7), 18.11.2004

1.e4 g6 2.d4 Lg7 3.f4 Sf6 4.e5 Sd5 5.Lc4 Sb6 6.Lb3 e6 7.Sf3 d5 8.Ld2
0-0 9.Lb4 Te8 10.Sbd2 a5 11.Lc5 a4 12.Lxb6



12...axb3 13.Lc5 b6 14.La3 bxc2 15.Dxc2 La6 16.Lb4 Dd7 17.a4 Lb5
18.b3 Sc6 19.Lc3 La6 20.b4 Se7 21.b5 Lb7 22.0-0 Sf5 23.Tfe1 Lh6
24.g3 Lf8 25.Sf1 c5 26.g4 Sxd4 27.Sxd4 cxd4 28.Lxd4 Tec8 29.Dd2
Lc5 30.h3 De7 31.g5 Lxd4+ 32.Dxd4 Dc5 33.Ted1 Dxd4+ 34.Txd4 Tc5
35.Tad1 Tac8 36.T1d3 Tc4 37.Se3 Tc3 38.Kf2 Kg7 39.Ke2 Tc1 40.Sg4
Th1 41.Kd2 Thc1 42.Se3 Th1 [(=)]

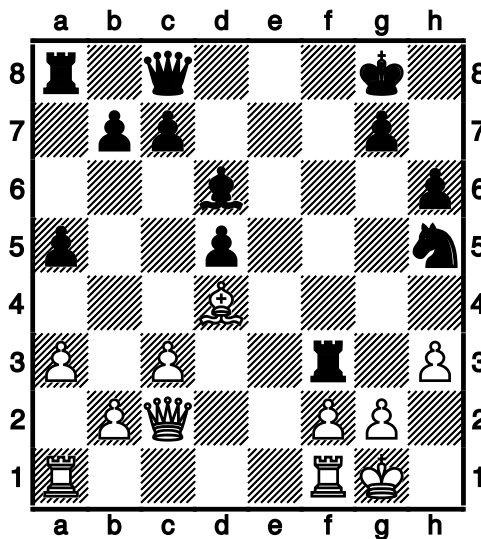
1/2-1/2

Pinneberger Winterturnier 2004

(95) Metzner, Arne – Singh, Nanak [C55]

Winterturnier 2004 Pinneberg (7), 18.11.2004

1.e4 e5 2.Sf3 Sc6 3.Lc4 Sf6 4.d3 d6 5.h3 Le6 6.Lxe6 fxe6 7.c3 h6
8.Db3 Dc8 9.Le3 Le7 10.Sbd2 d5 11.a3 0-0 12.Dc2 a5 13.d4 Ld6 14.0-0
Sh5 15.exd5 exd5 16.dxe5 Sxe5 17.Ld4 Sxf3+ 18.Sxf3 Txf3



19.Dg6 Tf5 20.f4 Dd7 21.g4 Txf4 22.Dxh5 Taf8 23.Dxd5+ Df7 24.Dxf7+
1/2-1/2

(96) Schmoll, Peter – Singh, Gurpreet [C55]

Winterturnier 2004 Pinneberg (7), 18.11.2004

1.e4 e5 2.Sf3 Sc6 3.Lc4 Sf6 4.d3 h6 5.Sc3 Lc5 6.h3 d6 7.Sd5 Sxd5
8.Lxd5 Le6 9.Lxc6+ bxc6 10.c4 0-0 11.0-0 Dd7 12.Kh2 Tab8 13.b3 f5
14.De2 fxe4 15.dxe4 Tf6 16.Td1 De7 17.Le3 Lb6 18.Td3 a5 19.a4 c5
20.Ld2 Ld7 21.Sg1 Tbf8 22.Tf1 c6 23.Tg3 d5 24.Le3 d4 25.Ld2 T8f7
26.Sf3 Lc7 27.De1 Dd8 28.Dc1 Kh8 29.De1 Df8 30.De2 Db8 31.Se1
Dg8 32.Tf3 Txf3 33.Sxf3 Le6 34.Sh4 Kh7 35.Dh5 Tf6 36.Sf3 Ld7
37.Kh1 Db8 38.Dh4 Dxb3 39.Lg5 Tg6 40.Le7 Dxc4 41.Tb1 Lc8 42.Lf8
Kg8 43.De7 Df7 44.Dxf7+ Kxf7 45.Lxc5 Te6 46.Lb6 Lxb6 47.Txb6 Kf6
48.Sd2 c5 49.Tb5 Tc6 50.Sc4 La6 51.Tb6 Txb6 52.Sxb6 Ke6 53.f3 c4
54.Sd5 Kd6 55.Kg1 c3
0-1

Pinneberger Winterturnier 2004

(97) Schleu, Günther – Retzlaff, Jennifer [D37]

Winterturnier 2004 Pinneberg (7), 18.11.2004

1.d4 Sf6 2.c4 e6 3.Sc3 d5 4.Sf3 Ld6 5.e3 0-0 6.Le2 Sc6 7.0-0 Se4
8.cxd5 exd5 9.Sxd5 Lg4 10.h3 Lxf3 11.Lxf3 Dh4 12.Dd3 f5 13.Lxe4
fxe4 14.Db3 Sa5 15.Dc2 c6 16.Sc3 Tae8 17.Se2 Tf6 18.Ld2 Tef8
19.Sf4 Lxf4 20.exf4 Txf4 21.Lxf4 Txf4 22.Tae1 De7 23.Dd2 Th4
24.Dxa5 b5 25.Dc3 De6 26.Db3 Dxb3 27.axb3 Tf4 28.Te3 1-0

(98) Schäfer, Hans – Schmidt, Günter [C00]

Winterturnier 2004 Pinneberg (7), 18.11.2004

1.e4 e6 2.Lc4 d5 3.exd5 exd5 4.Lb3 Sf6 5.d3 Ld6 6.Lg5 c6 7.Sf3 0-0
8.0-0 Te8 9.Sc3 Sbd7 10.a3 h6 11.Lxf6 Dxf6 12.d4 a5 13.Se2 Sb6
14.c3 Lg4 15.Dd3 Lxf3 16.Lc2 Le4 17.Dd1 Lxc2 18.Dxc2 Dh4 19.Sg3
Te6 20.Tae1 Tae8 21.Txe6 Txe6 22.Df5 Sc4 23.Dh3 Dvh3 24.gvh3 a4
25.Sf5 Lf4 26.Kg2 Te2 27.Kf3 Te4 28.Tg1 Sd2+ 29.Kg4 Lvh2+ 0-1

(99) Lösekamm, Heinrich – von Hohenthal, Ludwig [C41]

Winterturnier 2004 Pinneberg (7), 18.11.2004

1.e4 e5 2.Sf3 d6 3.h3 Le7 4.Lc4 h6 5.Sc3 Sf6 6.d3 a6 7.a3 0-0 8.b4
b5 9.La2 Lb7 10.Ld2 Sbd7 11.0-0 Sh7 12.Sd5 Lxd5 13.Lxd5 Tb8
14.Sh2 Lg5 15.Sg4 Lxd2 16.Dxd2 Kh8 17.f4 Sdf6 18.Sxf6 Sxf6
19.fxe5 dxe5 20.Tae1 c6 21.Lb3 Tb7 22.c4 Dd4+ 23.Kh1 Sh5 24.Tf3
Td7 25.c5 Kh7 26.g3 Te7 27.Kg2 Dd7 28.Ld1 g6 29.Tf2 Sg7 30.Lg4 f5
31.exf5 Sxf5 32.Tef1 Tef7 33.Lxf5 Txf5 34.Txf5 Txf5 35.Txf5 gxf5
36.Dc3 Dd5+ 37.Kf2 h5 38.h4 Dd4+ 39.Dxd4 exd4 40.Kf3 Kg6 41.Kf4
Kf6 42.Kf3 Ke5 43.Ke2 f4 44.Kf3 fxg3 45.Kxg3 Kf5 46.Kf3 ½-½

(100) Sengbusch, Gerhard – Zedler, Ernst [B40]

Winterturnier 2004 Pinneberg (7), 18.11.2004

1.e4 c5 2.Sf3 e6 3.Sc3 Sc6 4.d3 d6 5.h3 Le7 6.Ld2 Lf6 7.Tb1 Sge7
8.Le2 0-0 9.a3 a6 10.Dc1 Sg6 11.g3 Sd4 12.Tf1 Sxf3+ 13.Lxf3 Se5
14.Le2 h6 15.f4 Sc6 16.Le3 Ld4 17.Sd1 Lxe3 18.Sxe3 f5 19.c3 fxe4
20.dxe4 De7 21.Sg2 b5 22.Sh4 De8 23.Dd1 g5 24.Lh5 Dd7 25.Sg6 Tf6
26.Dd2 e5 27.f5 Se7 28.Sxe7+ Dxe7 29.Lg6 Lb7 30.Td1 Td8 31.Dd3
c4 32.De2 Lc6 33.Tf2 Kg7 34.Dg4 Ld7 35.Tdd2 Txg6 36.Dh5 Tf6 37.h4

Pinneberger Winterturnier 2004

Le8 38.Dg4 Df7 39.hxg5 hxg5 40.Dxg5+ Kf8 41.Th2 Dg7 42.Dh4 Ke7
43.g4 Df8 44.g5 Txf5 45.exf5 Dxf5 46.Dh7+ Lf7 47.Dxf5 1-0

(101) Hochreiner, Jürgen – Schmidt, Roland [B12]

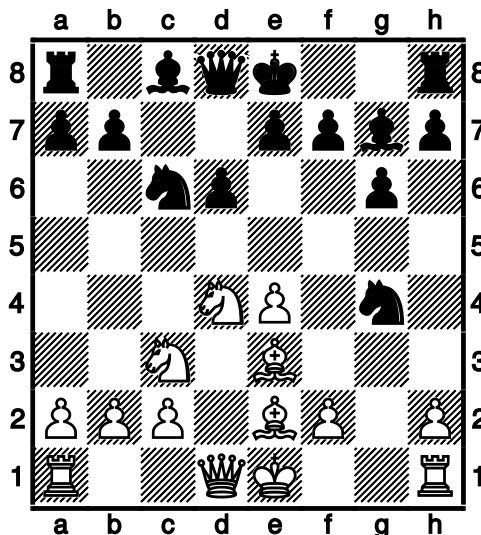
Winterturnier 2004 Pinneberg (8), 25.11.2004

1.e4 c6 2.d4 d5 3.Ld3 dxe4 4.Lxe4 Sf6 5.Lf3 Lf5 6.Sc3 e6 7.Sge2
Ld6 8.Sg3 Lg6 9.Sce4 Sxe4 10.Sxe4 Lxe4 11.Lxe4 Sd7 12.Le3 Sf6
13.Ld3 Dc7 14.h3 h6 15.c3 Sd5 16.Df3 0-0-0 17.0-0-0 Kb8 18.Lc4 Thf8
19.Kb1 Tde8 20.Td2 Db6 21.Tc2 a5 22.Lxd5 exd5 23.c4 dxc4 24.Txc4
Db5 25.Thc1 Td8 26.T4c3 Dd5 27.Dxd5 cxd5 28.Tb3 Td7 29.Tb5 Lc7
30.Ld2 Te8 31.Tcc5 Te2 32.Le3 f5 33.g3 g5 34.Kc1 Te1+ 35.Kd2 Ta1
36.Kc2 Th1 37.Txd5 Txd5 38.Txd5 f4 39.gxf4 gxf4 40.Ld2 Txh3 41.Tf5
Tf3 42.Le3 h5 43.d5 h4 44.Tf8+ Ld8 45.Lb6 h3 46.Txd8# 1-0

(102) Lemke, Detlef – Dörge, Olaf [B72]

Winterturnier 2004 Pinneberg (8), 25.11.2004

1.e4 c5 2.Sf3 d6 3.d4 cxd4 4.Sxd4 Sf6 5.Sc3 g6 6.Le2 Lg7 7.Le3 Sc6
8.g4 Sxg4



9.Dd2 Sxe3 10.fxe3 h5 11.Sf3 Da5 12.Lc4 Lg4 13.0-0 Lxc3 14.bxc3
Lxf3 15.Txf3 Se5 16.De2 Sxf3+ 17.Dxf3 Tf8 18.Tb1 Dc7 19.Ld5 Tb8
20.Tf1 [(=)]

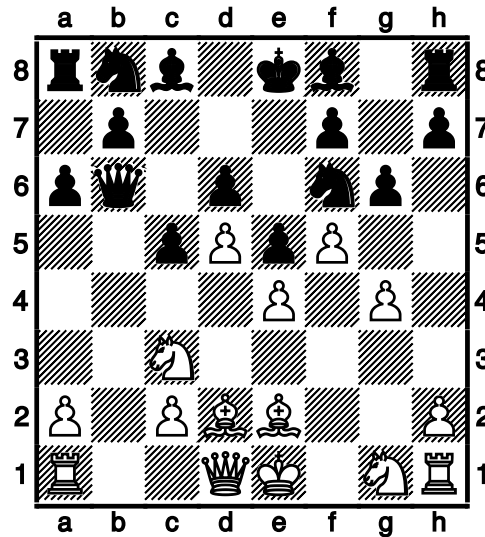
Pinneberger Winterturnier 2004

20...Dxc3 21.Lxf7+ Kd8 22.Df4 De5 23.Dh4 Tc8 24.c4 Tc5 25.De1
Dxe4 26.Ld5 Txf1+ 27.Dxf1 Dxe3+ 28.Kh1 Kc7 29.Db1 b6 30.Dd1 e6
31.Da4 exd5 32.Dxa7+ Kc8 33.Da8+ Kd7 34.Db7+ Ke6 35.Da8 De1+
36.Kg2 De4+ 37.Kg3 Dg4+ 38.Kf2 dxc4 39.De8+ Kd5 40.Da8+ Kd4
0-1

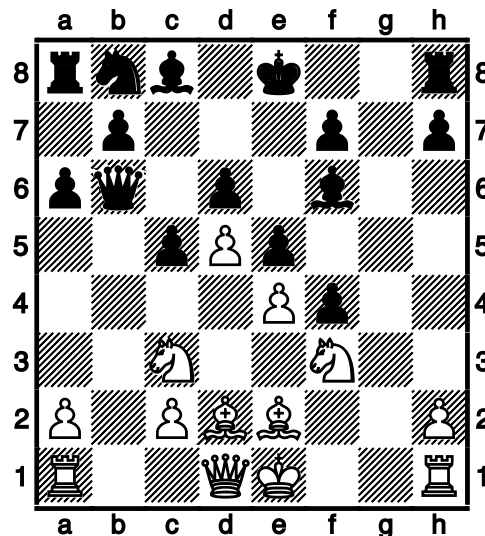
(103) Kuhn,Gerd – Brückner,Gerhard [A45]

Winterturnier 2004 Pinneberg (8), 25.11.2004

1.d4 Sf6 2.Lg5 c5 3.d5 Db6 4.Sc3 Dxb2 5.Ld2 Db6 6.e4 e5 7.f4 d6 8.f5
a6 9.g4 g6 10.Le2



10...Le7 11.g5 gxf5 12.gxf6 Lxf6 13.Sf3 f4



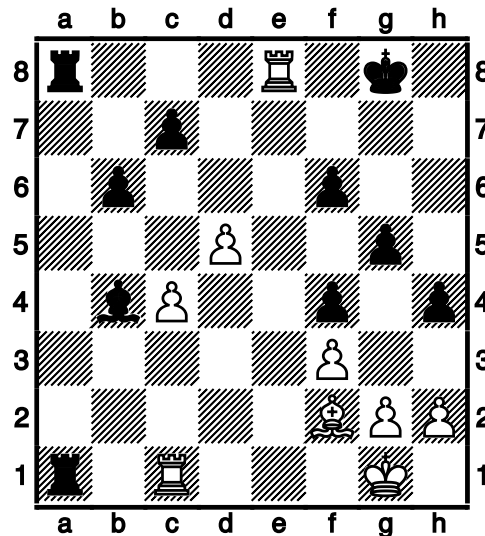
Pinneberger Winterturnier 2004

14.a4 Dd8 15.h4 Tg8 16.Db1 Tg3 17.Kd1 Lg4 18.Tf1 Sd7 19.Le1 Tg2
20.a5 h5 21.Dxb7 c4 22.Dc6 Ke7 23.Sa4 Tc8 24.Dxa6 Ta8 25.Dxc4
Tc8 26.Db3 Dc7 27.Tb1 Tb8 28.Sb6 Sc5 29.Dc4 Kf8 30.Lb4 Lxh4
31.Lxc5 dxc5 32.Sxh4 Lxe2+ 33.Dxe2 Txe2 34.Kxe2 Tb7 35.Sf5 c4
36.Th1 Txb6 37.axb6 f3+ 38.Kxf3 Dc5 39.b7 Da3+ 1-0

(104) Hadlich, Winfried – van Riesen, Klaus [C23]

Winterturnier 2004 Pinneberg (8), 25.11.2004

1.e4 e5 2.Lc4 Sc6 3.d3 Sf6 4.Le3 d6 5.f3 g6 6.Dd2 Lg7 7.Sc3 Sd4
8.Sce2 Sd7 9.c3 Se6 10.Sh3 Sb6 11.Lb3 0-0 12.Sf2 Sc5 13.Lc2 a5
14.Lg5 f6 15.Lh4 a4 16.0-0 g5 17.Lg3 Se6 18.Sg4 h5 19.Se3 h4 20.Lf2
Sf4 21.d4 Le6 22.dxe5 dxe5 23.Tfd1 De7 24.Sxf4 exf4 25.Sf5 Lxf5
26.Lxb6 Le6 27.Lf2 b6 28.b3 axb3 29.Lxb3 Df7 30.Lxe6 Dxe6 31.Dd5
Dxd5 32.exd5 Tfd8 33.c4 Lf8 34.a4 Ta5 35.Te1 Tda8 36.Te6 Txa4
37.Tc1 Ta1 38.Tee1 Lb4 39.Te8+



39...Txe8 40.Txa1 Te2 41.Tb1 Ld6 42.Ld4 Kf7 43.Tc1 Td2 44.Lf2 Kg6
45.Kf1 Kh5 46.Le1 Ta2 47.Lf2 Kg6 48.c5 bxc5 49.Lxc5 Td2 50.Lxd6
cxd6 51.Tc6 Txd5 52.g3 fxg3 53.hxg3 hxg3 54.Kg2 Kf5 55.Kxg3 Ke5
56.Tc8 Td4 57.Ta8 Tf4 58.Te8+ Kd4 59.Ta8 d5 60.Ta4+ Ke5 61.Ta5
Tb4 62.Ta6 Tb5 63.Ta8 Tb6 64.Ta4 Td6 65.f4+ gxf4+
0-1

Pinneberger Winterturnier 2004

(105) Grothkopp,Dietrich – Dangelowski,Peter [D30]

Winterturnier 2004 Pinneberg (8), 25.11.2004

1.d4 d5 2.c4 e6 3.e3 Sf6 4.Sf3 c6 5.Ld3 dxc4 6.Lxc4 b5 7.Ld3 a6 8.0-0 Sbd7 9.b3 Lb7 10.Lb2 Le7 11.Sbd2 0-0 12.Tc1 Tc8 13.Lb1 c5 14.De2 cxd4 15.Sxd4 Txc1 16.Txc1 Da8 17.S4f3 Td8 18.h3 h6 19.g4 Sf8 20.g5 hxg5 21.Sxg5 Td7 22.f4 Dd8 23.Sgf3 Lb4 24.Sf1 Le7 25.Se5 Tc7 26.Td1 Dc8 27.Sh2 Le4 28.Sd3 Db7 29.Se5 Lxb1 30.Txb1 Dc8 31.Shg4 Tc2 32.Dd3

0-1

(106) Iwanow,Thomas – Lorenz,Jens [D11]

Winterturnier 2004 Pinneberg (8), 25.11.2004

1.d4 Sf6 2.Sf3 d5 3.c4 c6 4.e3 Lg4 5.Sbd2 e6 6.Le2 Ld6 7.h3 Lh5 8.b3 Lb4 9.Lb2 Se4 10.g4 Lg6 11.a3 Lxd2+ 12.Sxd2 Dh4 13.Sxe4 Lxe4 14.Lf3 f5 15.De2 0-0 16.Th2 Sd7 17.0-0-0 Sf6 18.Tg1 Tf7 19.a4 Tc8 20.La3 Lxf3 21.Dxf3 fxg4 22.Dg2 gxh3 23.Txh3 De4 24.Dxe4 Sxe4 25.f3 Sf6 26.Ld6 Td8 27.Le5 Sd7 28.Ld6 dxc4 29.bxc4 Sb6 30.c5 Sxa4 31.Kc2 b5 32.Kb3 a5 33.Tg4 Sb6 34.Lf4 Sd5 35.Lg5 Tdd7 36.Tgh4 g6 37.e4 Sc7 38.Le3 e5 39.Kc3 exd4+ 40.Lxd4 Se6 41.Le3 Td1 42.f4 Tfd7 43.f5 T7d3+ 44.Kb2 Sf8 45.Tg4 a4 46.e5 Tb3+ 47.Ka2 Tdd3 48.Tgg3 a3 49.Th1 b4

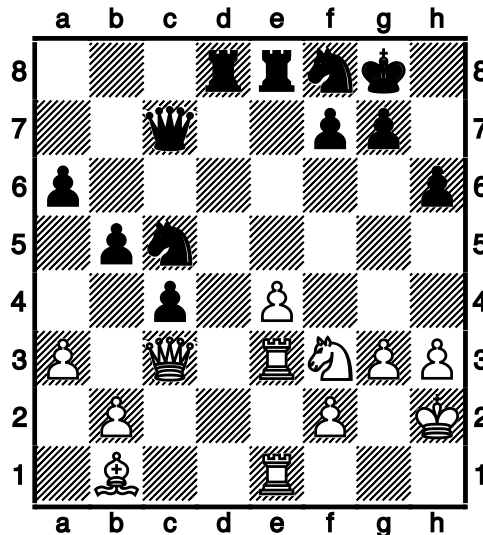
0-1

(107) Himmelstaub,Werner – Tornier,Siegfried [D37]

Winterturnier 2004 Pinneberg (8), 25.11.2004

1.d4 d5 2.c4 Sf6 3.Sf3 e6 4.Sc3 Le7 5.Lf4 a6 6.e3 0-0 7.Ld3 dxc4 8.Lxc4 b5 9.Ld3 Lb7 10.0-0 Sbd7 11.a3 c5 12.h3 Tc8 13.Te1 Te8 14.Tc1 c4 15.Lb1 h6 16.e4 Sf8 17.Dc2 Sh5 18.Lh2 Lg5 19.Tcd1 Lf4 20.d5 exd5 21.Sxd5 Lxh2+ 22.Kxh2 Lxd5 23.Txd5 Dc7+ 24.g3 Sf6 25.Td2 Tcd8 26.Tde2 S6d7 27.Dc3 Sc5 28.Te3

Pinneberger Winterturnier 2004



28...Te7 29.Sh4 Ted7 30.Sf5 Sce6 31.Kg2 Td2 32.e5 T2d7 33.Sd6 Sg5
34.h4 Dc6+ 35.f3 Sge6 36.Le4 Db6 37.Lf5 Tc7 38.Lb1 g6 39.Se4 Kg7
40.Sf6 Sd7 41.Sd5 Db8 42.Sxc7 Dxc7 43.f4 Sdc5 44.f5 gxf5 45.Lxf5
Td4 46.Lxe6 Sxe6 47.Kh2 Dd8 48.Te4 Td3 49.Dc1 Sd4 50.T1e3 Sf5
51.Txd3 Dxd3 52.De1 Df3 53.Tf4 Dh5 54.Df2 Dg6 55.Txf5 1-0

(108) Lüttig,Hendrik – Metzner,Arne [A00]

Winterturnier 2004 Pinneberg (8), 25.11.2004

1.b4 d5 2.Lb2 Sf6 3.e3 e6 4.a3 Le7 5.Sf3 0-0 6.Le2 b6 7.0-0 c5
8.bxc5 bxc5 9.c4 Sc6 10.d4 Db6 11.Lc3 cxd4 12.Sxd4 dxc4 13.Lxc4
Sxd4 14.Lxd4 Dc6 15.Le2 Dc7 16.Sd2 e5 17.Lb2 Td8 18.Dc1 Dd7
19.Td1 Df5 20.Sf3 e4 21.Txd8+ Lxd8 22.Lxf6 Lxf6 23.Dc6 exf3
24.De8# 1-0

(109) Singh,Gurpreet – Zimmermann,Manfred [B92]

Winterturnier 2004 Pinneberg (8), 25.11.2004

1.e4 c5 2.Sf3 d6 3.d4 cxd4 4.Sxd4 Sf6 5.Sc3 a6 6.Le2 e5 7.Sb3 Le7
8.0-0 Le6 9.f4 Dc7 10.Kh1 Sbd7 11.Dd3 Sb6 12.Dg3 Lc4 13.Tf2 Lxe2
14.Txe2 exf4 15.Dxg7 Tg8 16.Dh6 Tg6 17.Dxf4 Dd7 18.e5 dxe5
19.Dxe5 0-0-0 20.Dxe7 Dg4 21.Dc5+ Kb8 22.Dxb6 Te8 23.Txe8+ Sxe8
24.Dd8+ Ka7 25.Le3+ b6 26.De7+ Kb8 27.Dxe8+ Ka7 28.Dxf7+ Ka8
1-0

Pinneberger Winterturnier 2004

(110) Kaland,Joachim – Schmoll,Peter [C42]

Winterturnier 2004 Pinneberg (8), 25.11.2004

1.e4 e5 2.Sf3 Sf6 3.Sxe5 d6 4.Sf3 h6 5.Sc3 Sc6 6.Lb5 Ld7 7.0-0 a6
8.Lxc6 bxc6 9.h3 Dc8 10.Sh2 Le6 11.d3 Le7 12.f4 d5 13.f5 Ld7 14.e5
Sh7 15.Dh5 0-0 16.Sg4 Lg5 17.Lxg5 hxg5 18.f6 Lxg4 19.hxg4 De6
20.Tf3 Dxe5 21.Th3 1-0

(111) Schmidt,Günter – Schleu,Günther [A36]

Winterturnier 2004 Pinneberg (8), 25.11.2004

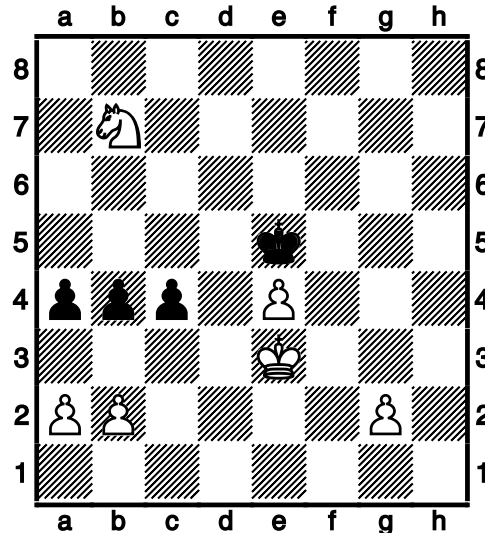
1.c4 c5 2.g3 Sc6 3.Sc3 Tb8 4.Sf3 g6 5.a3 Lg7 6.b4 b6 7.Tb1 Lb7
8.Lg2 Sf6 9.e3 0-0 10.0-0 Dc7 11.d4 cxd4 12.exd4 Dc8 13.d5 Sd8
14.Dd3 d6 15.Lb2 a6 16.Sa4 Dc7 17.Ld4 Sxd5 18.cxd5 Lxd4 19.Dxd4
Lc8 20.Tfc1 Da7 21.Tc3 Ld7 22.Tbc1 Lxa4 23.Tc7 Tb7 24.De4 Txc7
25.Te1 Lc2 26.Dh4 Kg7 27.Dd4+ f6 28.Sg5 Kg8 29.Sf3 Sf7 30.Lh3 Lb3
31.Le6 Db7 32.h4 Kg7 33.g4 Se5 34.Sxe5 dxe5 35.Dd2 Td8 36.d6
Txd6 37.Dxd6 exd6 38.Lxb3 Tc3 39.Le6 Th3 40.Kf1 Th1+ 41.Ke2
De4+ 0-1

(112) Remstedt,Ute – Lösekamm,Heinrich [C50]

Winterturnier 2004 Pinneberg (8), 25.11.2004

1.e4 e5 2.Sf3 Sc6 3.Lc4 Lc5 4.d3 h6 5.Sc3 Sf6 6.0-0 d6 7.h3 a6 8.Se2
De7 9.c3 Le6 10.Lb3 Lxb3 11.Dxb3 Tb8 12.Sg3 g6 13.Te1 0-0 14.Lxh6
Tfe8 15.Lg5 De6 16.Dd1 Kg7 17.d4 exd4 18.cxd4 Lxd4 19.Sxd4 Sxd4
20.Dxd4 De5 21.Dxe5 Txe5 22.Lxf6+ Kxf6 23.Tac1 c5 24.f3 b5
25.Ted1 Td8 26.Se2 b4 27.Sf4 Kg5 28.Sd5 Kh4 29.Td3 f5 30.Te1 fxe4
31.Txe4+ Txe4 32.fxe4 g5 33.Sc7 a5 34.Sb5 g4 35.hxg4 Kxg4
36.Txd6 Txd6 37.Sxd6 Kf4 38.Kf2 Ke5 39.Sb7 c4 40.Ke3 a4

Pinneberger Winterturnier 2004



41.Sc5 a3 42.bxa3 c3 43.axb4 c2 44.Kd2 c1D+ 45.Kxc1 1-0

(113) Sengbusch, Gerhard – Retzlaff, Jennifer [C46]

Winterturnier 2004 Pinneberg (8), 25.11.2004

1.e4 e5 2.Sf3 Sc6 3.Sc3 Lb4 4.Sb1 Sf6 5.c3 Ld6 6.d3 b6 7.Le3 Lb7
8.Sbd2 De7 9.h3 0-0-0 10.Le2 h6 11.a3 De6 12.g4 g5 13.Db1 De7
14.b4 a6 15.a4 h5 16.gxh5 Txh5 17.Lxg5 Txg5 18.Sxg5 Tg8 19.Sdf3
Sh5 20.h4 Sf4 21.Dc1 Sxe2 22.Kxe2 f6 23.Sh3 Dg7 24.Tg1 Dh7
25.Txg8+ Dxc8 26.Dh1 Db3 27.Dc1 De6 28.Dh1 Db3 29.Dc1 De6
30.Shg1 Dg4 31.De3 De6 32.Sd2 Dg4+ 33.Sgf3 Se7 34.Tg1 De6
35.Dh6 Sg8 36.Dh7 Lc6 37.Txg8+ Kb7 38.Dh8 Lxa4 39.Tg1 f5 40.h5
fxe4 41.Sg5 Df5 42.Sgxe4 Lc6 43.Dh6 Lf8 44.Dg5 De6 45.Df6 Dxf6
46.Sxf6 Lh6 47.Sde4 d5 48.Sd2 d4 49.c4 Lf8 50.b5 axb5 51.cxb5
Lxb5 52.Tg8 Le7 53.Sfe4 Lc6 54.h6 Lxe4 55.Sxe4 b5 56.h7 b4 57.h8D
b3 58.Tb8+ Kc6 59.De8+ 1-0

(114) Zedler, Ernst – Schäfer, Hans [C41]

Winterturnier 2004 Pinneberg (8), 25.11.2004

1.e4 e5 2.Sf3 d6 3.h3 Sf6 4.d3 Le7 5.Le2 0-0 6.Le3 Sc6 7.c3 Le6 8.0
0 Sh5 9.Dd2 f5 10.Lg5 f4 11.Lxe7 Dxe7 12.Sh2 Dg5 13.Sf3 Dg6
14.Kh1 h6 15.Sh4 Dg5 16.Sf3 Df6 17.Sa3 g5 18.g4 Sg7 19.Sb5 Df7
20.d4 Sa5 21.b3 a6 22.Sa3 c5 23.d5 Ld7 24.c4 b6 25.Kg2 h5 26.Sxg5
Df6 27.Se6 Lxe6 28.dxe6 h4 29.f3 Dxe6 30.Dd5 Dxd5 31.exd5 Tf6
32.Ld3 Taf8 33.Sb1 Th6 1/2-1/2

Pinneberger Winterturnier 2004

(115) Dammann,Rudolf – Torborg,Karl-Dieter [C26]

Winterturnier 2004 Pinneberg (8), 25.11.2004

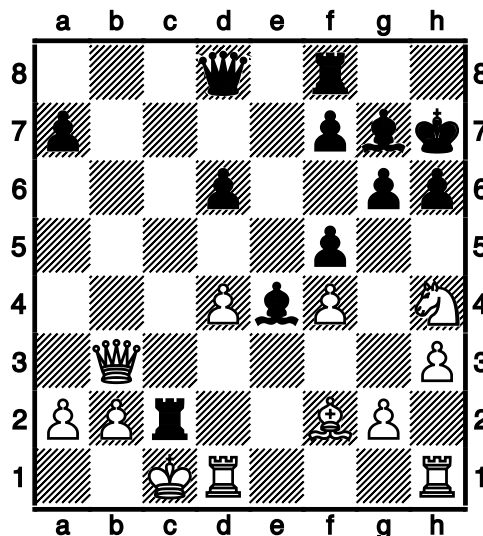
1.e4 e5 2.Lc4 Sf6 3.Sc3 Lc5 4.d3 0-0 5.Lg5 Sc6 6.Sd5 Le7 7.Sf3 d6
8.h3 Le6 9.c3 a6 10.Sxe7+ Dxe7 11.Db3 Lxc4 12.Dxc4 Sd8 13.Sh4 g6
14.d4 Se6 15.Lh6 Tfc8 16.dxe5 dxe5 17.0-0 Se8 18.Sf3 Dc5 19.De2
Sf4 20.Dc2 Td8 21.Tfd1 Td6 22.b4 Db5 23.a4 Db6 24.Sxe5 Txd1+
25.Txd1 Se6 26.Le3 c5 27.Sd7 Dc7 28.Sxc5 Sxc5 29.Lxc5 b6 30.Ld4
Td8 31.e5 Sg7 32.De4 Sf5 33.e6 Sxd4 34.exf7+ Dxf7 35.Txd4 Te8
36.Df4 Dxf4 37.Txf4 Te6 38.Tc4 Kg7 39.f4 Kf6 40.h4 Kf5 41.g3 h6
42.Kf2 Td6 43.a5 b5 44.Tc5+ Kg4 45.Ke2 Kxg3 46.f5 Kxh4 47.fxg6
Txg6 48.Td5 h5 49.Td1 Kg5 50.Kf3 Kh6 51.Td4 Tf6+ 52.Kg3 Kg5
53.Td5+ Kh6 54.Kh4 Tf4+ 55.Kg3 Tf6 56.Kh4 Tf4+ 57.Kg3

1/2-1/2

(116) van Riesen,Klaus – Dörge,Olaf [A48]

Winterturnier 2004 Pinneberg (9), 02.12.2004

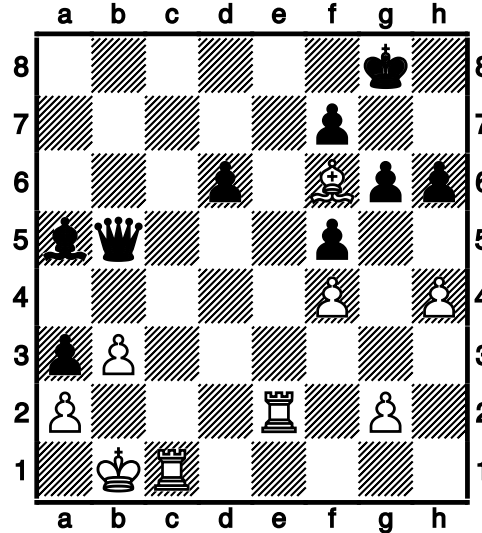
1.d4 Sf6 2.Sf3 g6 3.Sc3 Lg7 4.e4 0-0 5.Le3 d6 6.Dd2 Sg4 7.Lg5 h6
8.Lh4 c6 9.h3 Sf6 10.0-0-0 b5 11.e5 b4 12.exf6 bxc3 13.Dxc3 exf6
14.Lc4 Sd7 15.Lb3 Lb7 16.Lg3 Sb6 17.Sh4 Kh7 18.f4 f5 19.Lf2 c5
20.Dd3 Le4 21.Df1 c4 22.Lxc4 Sxc4 23.Dxc4 Tc8 24.Db3 Txc2+



25.Dxc2 Lxc2 26.Kxc2 Da5 27.Kb1 Tb8 28.Sf3 Db4 29.Td2 a5 30.Tc1

Pinneberger Winterturnier 2004

a4 31.h4 Db7 32.Te2 Lf6 33.Tcc2 Kg7 34.Tc3 Db5 35.Tce3 a3 36.b3
Tc8 37.Te1 Dc6 38.T3e2 Dc3 39.Td1 Dc6 40.Tde1 Ld8 41.Td1 Lb6
42.Se1 La5 43.d5 Db5 44.Ld4+ Kg8 45.Sd3 Dxd5 46.Lf6 Db5 47.Sc1
Txc1+ 48.Txc1



48...g5 49.Tc8+ Kh7 50.h5 Dd3+ 51.Kc1 Ld2+ 52.Txd2 Df1+ 53.Kc2
1-0

(117) Griwenka, Volker – Koester, Gerhard, Dr. [C36]

Winterturnier 2004 Pinneberg (9), 02.12.2004

1.e4 e5 2.f4 exf4 3.Sf3 d5 4.exd5 Sf6 5.Le2 Sxd5 6.c4 Sf6 7.d4 Lb4+
8.Ld2 Lxd2+ 9.Dxd2 0-0 10.Sc3 c6 11.Dxf4 Sbd7 12.0-0-0 Sh5 13.Dd2
Da5 14.g4 Shf6 15.g5 Se8 16.Ld3 g6 17.h4 Sb6 18.Se5 Sd7 19.Sg4
Sb6 20.Sh6+ Kg7 21.De3 Le6 22.d5 Lxd5 23.cxd5 Sxd5 24.Sxd5
Dxd5 25.Kb1 Sd6 26.Lc2 Dg2 27.De5+ f6 28.Dxd6 fxg5 29.De7+ Kh8
30.De5+ 1-0

(118) Lemke, Detlef – Hadlich, Winfried [B40]

Winterturnier 2004 Pinneberg (9), 02.12.2004

1.e4 e6 2.d4 c5 3.Sf3 Sc6 4.d5 Sce7 5.d6 Sg6 6.e5 f6 7.Sc3 a6 8.Ld3
fxe5 9.Lg5 Sf6 10.Lxg6+ hxg6 11.Dd3 e4 12.Sxe4 Da5+ 13.Sc3 Kd8
14.Se5 Tg8 15.Sf7+ Ke8 16.Dxg6 Lxd6 17.Sxd6+ Ke7 18.0-0-0 c4
19.Df7+ Kd8 20.Sxb7+ 1-0

Pinneberger Winterturnier 2004

(119) Dangelowski, Peter – Iwanow, Thomas [D00]

Winterturnier 2004 Pinneberg (9), 02.12.2004

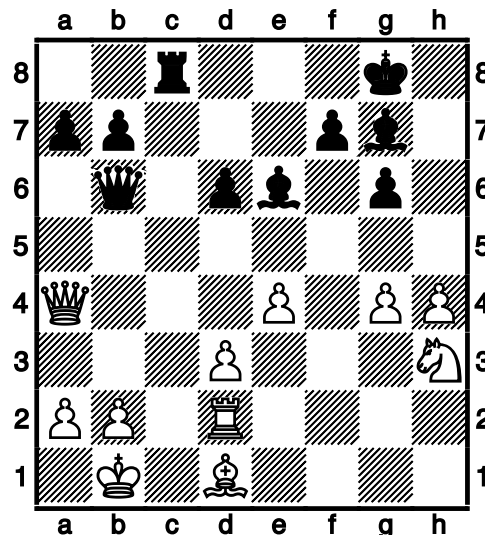
1.d4 d5 2.Lf4 e6 3.e3 Ld6 4.Lg3 Sf6 5.Ld3 c6 6.Sd2 Dc7 7.Sgf3 Sbd7
8.c4 Db8 9.cxd5 exd5 10.Dc2 h6 11.Tc1 0-0 12.Sh4 Te8 13.Sf5 Lc7
14.b4 a6 15.a4 Sf8 16.b5 axb5 17.axb5 Lxf5 18.Lxf5 Se6 19.Db2 Lxg3
20.hxg3 cxb5 21.Lxe6 Txe6 22.Dxb5 Da7 23.0-0 Ta6 24.Tb1 b6
25.Tfc1 Ta2 26.Sf1 Sg4 27.f3 Sf6 28.Tc6 Da6 29.Txb6 Dxb5 30.T6xb5
Kh7 31.g4 Tc8 [unklare Notation]

1-0

(120) Himmelstaub, Werner – Lorenz, Jens [B07]

Winterturnier 2004 Pinneberg (9), 2004

1.e4 g6 2.d4 Lg7 3.Sc3 d6 4.Le3 Sf6 5.Le2 0-0 6.h4 h5 7.f3 e5 8.d5 c6
9.g4 cxd5 10.Sxd5 Sbd7 11.Lg5 hxg4 12.fxg4 Sc5 13.Lf3 Se6 14.Le3
Sxd5 15.Dxd5 Sd4 16.Lxd4 Le6 17.Db5 exd4 18.0-0-0 Tc8 19.Kb1 Tc5
20.Db4 Dc7 21.Td2 Tc8 22.Ld1 Tc4 23.Da3 Db6 24.Th3 Tc3 25.Da4
Txh3 26.Sxh3 d3 27.cxd3



27...De3 28.Db4 Dxb3 29.Dxb7 De3 30.Tc2 Txc2 31.Kxc2 Df2+ 32.Kc1
Dxb3 33.Lb3 De1+ 34.Kc2 De2+ 35.Kc1 Lh6+ 36.Kb1 De1+ 37.Kc2
Dc1#

0-1

Pinneberger Winterturnier 2004

(121) Stier,Uwe – Grothkopp,Dietrich [A03]

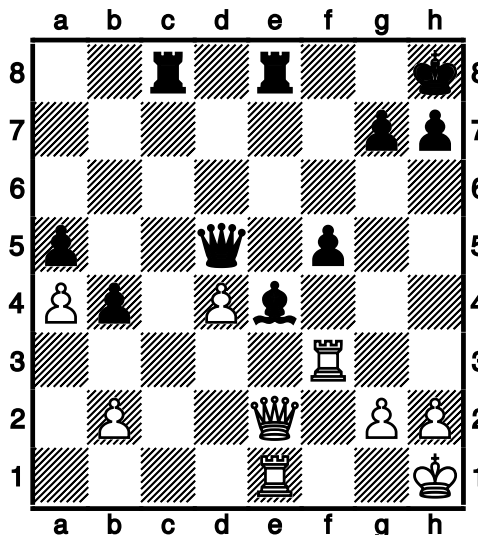
Winterturnier 2004 Pinneberg (9), 02.12.2004

1.f4 d5 2.Sf3 Sf6 3.e3 c5 4.b3 e6 5.d4 Sbd7 6.Ld3 Le7 7.0-0 h6
8.Sbd2 0-0 9.Lb2 Sg4 10.De2 f5 11.h3 Sgf6 12.c4 Se4 13.Kh2 Sdf6
14.Se5 De8 15.cxd5 exd5 16.Lb5 Sd7 17.Tac1 cxd4 18.Lxd4 a6
19.Lxd7 Lxd7 20.Sxd7 Dxd7 $\frac{1}{2}$ - $\frac{1}{2}$

(122) Singh,Nanak – Zimmermann,Manfred [B92]

Winterturnier 2004 Pinneberg (9), 02.12.2004

1.e4 c5 2.Sf3 d6 3.d4 cxd4 4.Sxd4 Sf6 5.Sc3 a6 6.Le3 e5 7.Sb3 Le7
8.Le2 b5 9.Sd5 Sbd7 10.f3 Sxd5 11.Dxd5 Tb8 12.a4 Lb7 13.Dd2 b4
14.La7 Ta8 15.Le3 a5 16.Lb5 0-0 17.0-0 f5 18.f4 exf4 19.Lxf4 Lxe4
20.Lxd6 Db6+ 21.Sd4 Lxd6 22.Lxd7 Tfd8 23.Le6+ Kh8 24.c3 Lc5
25.Kh1 Lxd4 26.cxd4 Dxe6 27.Tae1 Dd5 28.De2 Tac8 29.Tf2 Te8
30.Tf3



30...Tc2 31.Dxc2 Td8 32.Df2 g6 33.Tfe3 g5 34.Dd2 g4 35.Td1 f4
36.Txe4 Dxe4 37.d5 f3 38.Dd4+ Dxd4 39.Txd4 f2 [unklare Notation]

1-0

Pinneberger Winterturnier 2004

(123) Remstedt,Ute – Schleu,Günther [B20]

Winterturnier 2004 Pinneberg (9), 02.12.2004

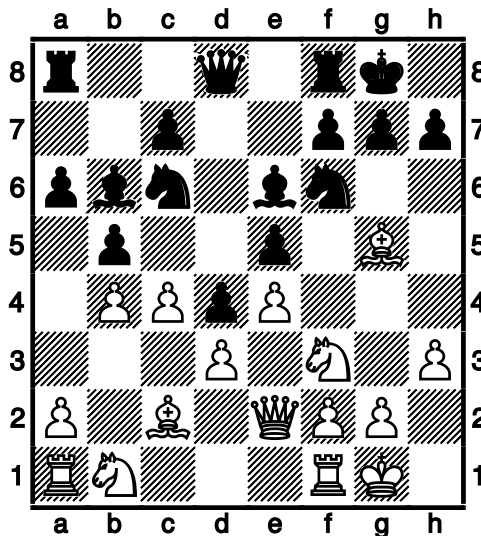
1.e4 c5 2.Lc4 e6 3.Sc3 Sc6 4.d3 a6 5.a3 Le7 6.Sf3 h6 7.0-0 b5 8.La2
Lb7 9.Te1 d6 10.h3 Dc7 11.Lf4 Lf6 12.Dc1 Sge7 13.Se2 Se5 14.Sh2
S7c6 15.De3 De7 16.c3 Td8 17.Tad1 Sg6 18.Sg4 Sce5 19.Lxe5 dxe5
20.Sxf6+ Dxf6 21.Dxc5 De7 22.Dxe7+ Kxe7 23.g3 Td6 24.Td2 Thd8
25.Ted1 Lxe4 26.Sc1 Lf3 27.Te1 e4 28.Te3 Se5 29.d4 Sc4 30.Lxc4
bxc4 31.b3 cxb3 32.Sxb3 Tb8 33.Sc5 Tb1+ 34.Kh2

0-1

(124) Zedler,Ernst – Retzlaff,Jennifer [C77]

Winterturnier 2004 Pinneberg (9), 02.12.2004

1.e4 e5 2.Sf3 Sc6 3.Lb5 Sf6 4.d3 a6 5.La4 Lc5 6.0-0 0-0 7.c3 d6 8.h3
b5 9.Lc2 Le6 10.Lg5 d5 11.De2 d4 12.b4 Lb6 13.c4



13...De7 14.a3 h6 15.Lh4 Tad8 16.c5 La7 17.Sbd2 a5 18.Tab1 Ta8
19.Lg3 La2 20.Tb2 Le6 21.Sxe5 Sxe5 22.Lxe5 c6 23.Lxd4 Dd7 24.De3
Lb8 25.Lxf6 Dc7 26.f4 gxf6 27.Tf3 axb4 28.axb4 Ta1+ 29.Kf2 Da7
30.Tg3+ Kh8 31.f5 Lxg3+ 32.Dxg3 Da3 33.Tb1 Txb1 34.Lxb1 Dc3
35.De3 Ld7 36.La2 Dxb4 37.Dxh6+ Kg8 38.De3 Db2 39.Dg3+

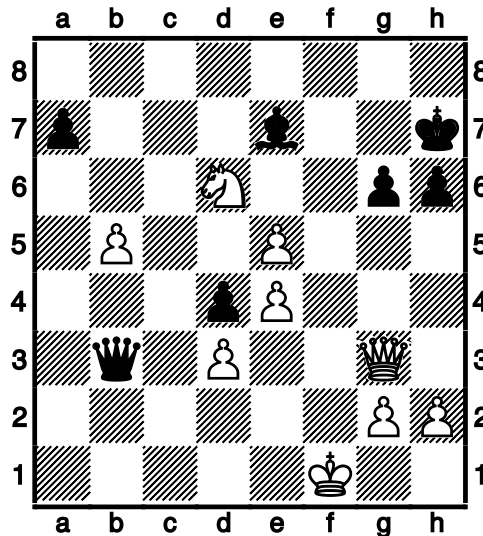
1/2-1/2

Pinneberger Winterturnier 2004

(125) Dammann,Rudolf – Schäfer,Hans [C23]

Winterturnier 2004 Pinneberg (9), 02.12.2004

1.e4 e5 2.Lc4 d6 3.Sc3 Le6 4.Sd5 c6 5.Se3 Lxc4 6.Sxc4 b5 7.Se3 Sf6
8.d3 Le7 9.b3 0-0 10.Sh3 h6 11.Sf5 Sh7 12.0-0 Lf6 13.Lb2 Sg5 14.Dg4
Sxh3+ 15.Dxh3 c5 16.Tad1 Sc6 17.Dg3 Kh7 18.c4 Sd4 19.Lxd4 cxd4
20.cxb5 Tc8 21.Tc1 g6 22.Txc8 Dxc8 23.Sxd6 Dc2 24.f4 Dxa2 25.fxe5
Le7 26.Sxf7 Dxb3 27.Sd6 Txf1+ 28.Kxf1



28...Lg5 29.Df3 Db1+ 30.Kf2 Le3+ 31.Kg3 De1+ 32.Kh3 Lg5 33.g3
De3 34.Df7+ Kh8 35.Se8
1-0

(126) Lösekamm,Heinrich – Torborg,Karl-Dieter [C44]

Winterturnier 2004 Pinneberg (9), 02.12.2004

1.e4 e5 2.Sf3 Sc6 3.a3 Sf6 4.Sc3 Le7 5.h3 0-0 6.Lc4 a6 7.d3 b5 8.La2
b4 9.axb4 Sxb4 10.Sd5 Sxa2 11.Sxf6+ Lxf6 12.Txa2 d6 13.0-0 Le6
14.Ta1 d5 15.Te1 dxe4 16.Txe4 Ld5 17.Te1 Te8 18.c4 Lc6 19.Le3 e4
20.dxe4 Dxd1 21.Texd1 Lxb2 22.Ta2 Lf6 23.Lg5 Lxg5 24.Sxg5 f6
25.Sf3 Lxe4 26.Td7 c6 27.Sd4 c5 28.Tc7 cxd4 29.Td2 d3 30.f3 Lg6
31.Kf2 h5 32.h4 a5 33.g4 a4 34.f4 hxg4 35.h5 Lxh5 36.Txd3 Kh8
37.Ta3 Ted8 38.Kg3 f5 39.Kh4 Lg6 40.Kg5 Lh7 41.Kh5 Td6 42.Kg5
Tg6+ 0-1

Pinneberger Winterturnier 2004

(127) Schmidt,Günter – von Hohenthal,Ludwig [D02]

Winterturnier 2004 Pinneberg (9), 02.12.2004

1.d4 d5 2.Sf3 e6 3.e3 Ld6 4.c4 c5 5.dxc5 Lxc5 6.Sc3 Lb4 7.a3 Lxc3+
8.bxc3 Sf6 9.cxd5 exd5 10.Ld3 h6 11.0-0 0-0 12.Dc2 Lg4 13.h3 Le6
14.Td1 Dc8 15.Lb2 Sbd7 16.Tac1 Sb6 17.Sd4 Sc4 18.Lxc4 dxc4
19.Sxe6 fxe6 20.a4 Dc6 21.Ta1 Se4 22.f3 Sf6 23.Td4 Tac8 24.De2 a5
25.Tad1 Sd5 26.Lc1 Dc7 27.e4 Sb6 28.La3 Tfd8 29.Ld6 Dc6 30.e5
Sd5 31.Te1 Td7 32.Da2 Tb8 33.Da3 b6 34.Tb1 Tbb7 35.Tb5 Td8
36.Td1 Tdd7 37.Tdb1 Tf7 38.Dc1 Sf4 39.De3 Sd5 40.Dd4 Tf4 41.Dd2
Tff7 42.Tf1 Sf4 43.Df2 Sd5 44.Tc1 Tf5 45.Dh4 Td7 46.Dg4 Tdf7
47.Dh4 Tg5 48.Df2 Tb7 49.Dd2 Kh7 50.Dd4 Sc7 51.Lxc7 Dxc7 52.Dd6
Df7 53.Dc6 Td7 54.Txb6 Td3 55.Dxe6 Dxf3 56.Dc6

0-1